

STATE OF ILLINOIS  
DEPARTMENT OF TRANSPORTATION

F.A.I. RTE.	SECTION	COUNTY	TOTAL SHEETS	SHEET NO.
55	53(1,2,3,4,6)PP	LIVINGSTON	11	1
		ILLINOIS	CONTRACT NO. 66H29	

INDEX OF SHEETS

1. COVER SHEET
2. GENERAL NOTES
- 3 - 4. SUMMARY OF QUANTITIES
5. TYPICAL SECTIONS
6. SCHEDULES - NORTHBOUND LANES
7. SCHEDULES - SOUTHBOUND LANES
8. TRAFFIC CONTROL AND PROTECTION, STANDARD 701401 (Special)
9. PAVEMENT MARKING DETAILS
- 10 - 11. CLASS A PATCHING DETAILS

STANDARDS

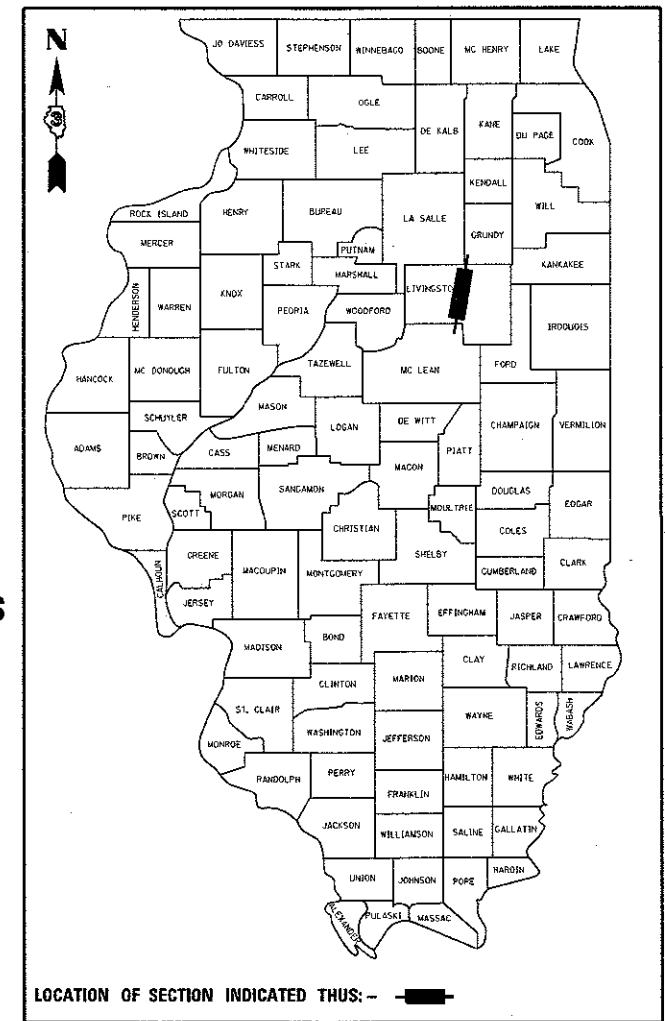
- |           |  |
|-----------|--|
| 000001-06 | STANDARD SYMBOLS, ABBREVIATIONS AND PATTERNS                                   |
| 001001-02 | AREAS OF REINFORCEMENT BARS  |
| 001006    | DECIMAL OF AN INCH AND OF A FOOT   |
| 421001-03 | BAR REINFORCEMENT FOR CRC PAVEMENT   |
| 701101-05 | OFF-ROAD OPERATIONS, MULTILANE, 15' (4.5 m) TO 24" (600 mm) FROM PAVEMENT EDGE |
| 701106-02 | OFF-ROAD OPERATIONS, MULTILANE, MORE THAN 15' (4.5 m) AWAY                     |
| 701401-10 | LANE CLOSURE, FREEWAY/EXPRESSWAY   |
| 701411-09 | LANE CLOSURE, MULTILANE, AT ENTRANCE OR EXIT RAMP FOR SPEEDS ≥ 45 MPH          |
| 701426-09 | LANE CLOSURE, MULTILANE INTERMITTENT OR MOVING OPERATION, FOR SPEEDS ≥ 45 MPH  |
| 701428-01 | TRAFFIC CONTROL, SETUP AND REMOVAL, FREEWAY/EXPRESSWAY                         |
| 701901-06 | TRAFFIC CONTROL DEVICES  |

PROPOSED  
HIGHWAY PLANS

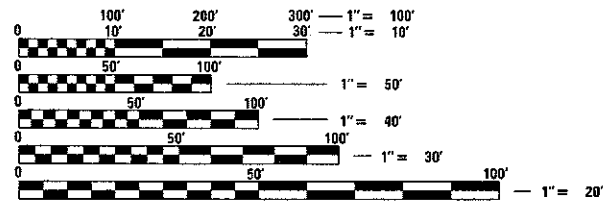
F.A.I. ROUTE 55 (I-55)  
SECTION 53(1,2,3,4,6)PP  
PAVEMENT PATCHING  
LIVINGSTON COUNTY

C-93-066-17

IMPROVEMENT ENDS  
GRUNDY COUNTY LINE  
(M.M. 218.81)



FUNCTIONAL CLASSIFICATION  
RURAL INTERSTATE  
F.A.I. ROUTE 55 (I-55)  
2015 ADT 22500  
P.V. 63.2% S.U. 10.5% M.U. 26.3%

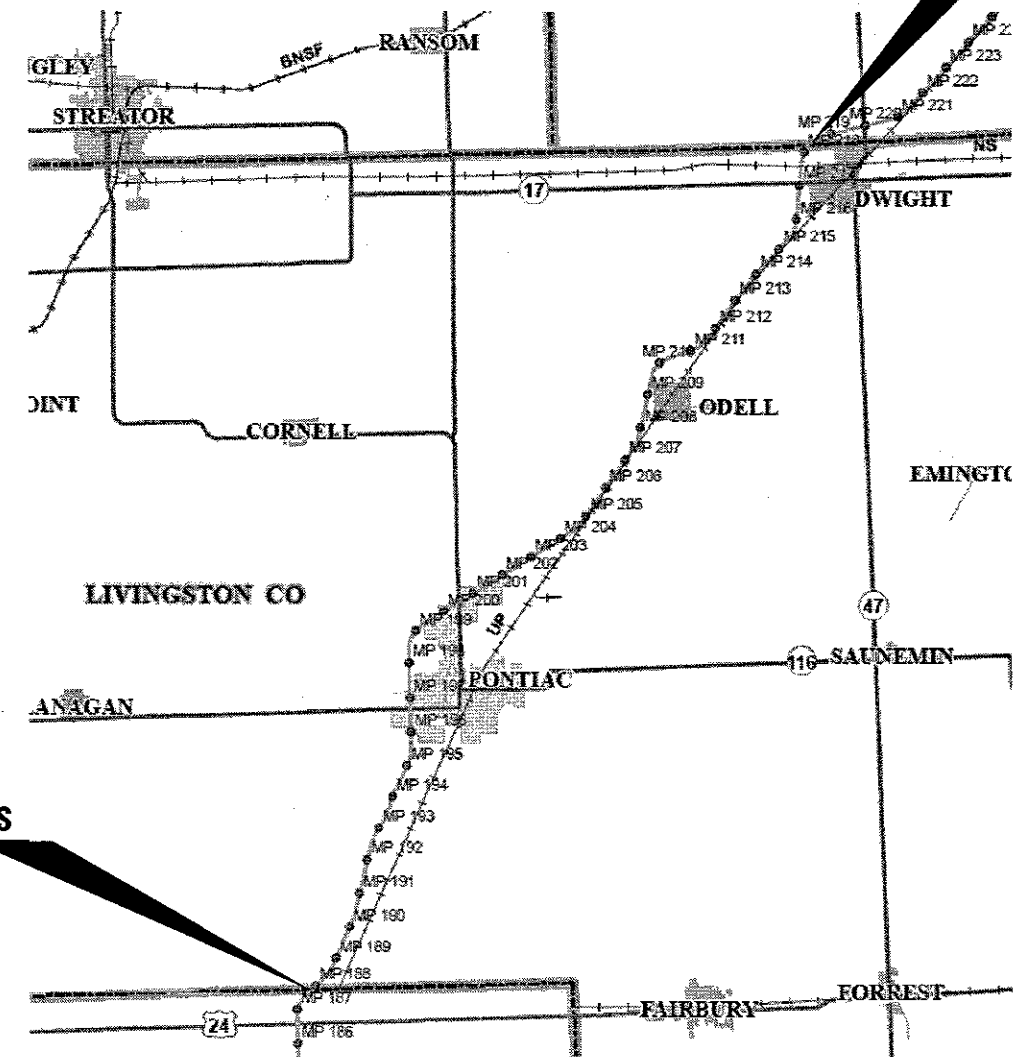


FULL SIZE PLANS HAVE BEEN PREPARED USING STANDARD ENGINEERING SCALES. REDUCED SIZED PLANS WILL NOT CONFORM TO STANDARD SCALES. IN MAKING MEASUREMENTS ON REDUCED PLANS, THE ABOVE SCALES MAY BE USED.

J.U.L.I.E.  
JOINT UTILITY LOCATION INFORMATION FOR EXCAVATION  
1-800-892-0123  
OR 811

PROJECT ENGINEER: JOE KANNEL P.E.  
UNIT CHIEF: RON WOODSHANK  
DISTRICT 3 NO. (815) 434-6131  
CONTRACT NO. 66H29

IMPROVEMENT BEGINS  
MCLEAN COUNTY LINE  
(M.M. 187.93)



GROSS LENGTH = 163,046 FT. = 30.88 MILE  
NET LENGTH = 974 FT. = 0.18 MILE

STATE OF ILLINOIS  
DEPARTMENT OF TRANSPORTATION

SUBMITTED May 23 2017  
Markle  
REGIONAL ENGINEER

June 30 2017  
Maureen M. Adda-Rife  
ENGINEER OF DESIGN AND ENVIRONMENT

June 30 2017  
Allo  
DIRECTOR OF PROGRAM DEVELOPMENT

PRINTED BY THE AUTHORITY  
OF THE STATE OF ILLINOIS

REV

**GENERAL NOTES**

PLAN DIMENSIONS AND DETAILS RELATIVE TO EXISTING PLANS ARE SUBJECT TO NOMINAL CONSTRUCTION VARIATIONS. THE CONTRACTOR SHALL FIELD VERIFY EXISTING DIMENSIONS AND DETAILS AFFECTING NEW CONSTRUCTION AND MAKE NECESSARY APPROVED ADJUSTMENTS PRIOR TO CONSTRUCTION OR ORDERING OF MATERIALS. SUCH VARIATIONS SHALL NOT BE CAUSE FOR ADDITIONAL COMPENSATION FOR A CHANGE IN SCOPE OF WORK; HOWEVER, THE CONTRACTOR WILL BE PAID FOR THE QUANTITY ACTUALLY FURNISHED AT THE UNIT PRICE BID FOR THE WORK.

ON EXISTING PAVEMENT WHICH MAY BE SUPERELEVATED, THE NEW CONCRETE PAVEMENT SHALL BE BUILT WITH THE SAME SUPERELEVATION UNLESS NEW SUPERELEVATION RATES ARE GIVEN ON THE PLANS.

ANY REFERENCE TO A STANDARD IN THESE PLANS SHALL BE INTERPRETED TO MEAN THE EDITION AS INDICATED BY THE SUBNUMBER SHOWN IN THE LIST OF STANDARDS OR THE COPY INCLUDED IN THESE PLANS.

THE CONTRACTOR SHALL CONTACT JULIE AT LEAST 48 HOURS PRIOR TO EXCAVATION TO DETERMINE WHICH UTILITIES ARE IN THE AREA.

ALL EXCAVATED MATERIAL, WHICH INCLUDES DIGGING OR GRADING OF ANY SOIL OR FILL MATERIAL, WITH THE EXCEPTION OF AGGREGATE FILLS, MUST BE INCORPORATED WITHIN THE IDOT RIGHT OF WAY DUE TO ENVIRONMENTAL DOCUMENTATION REQUIREMENTS.

**COMMITMENTS**

STATE OF ILLINOIS  
DEPARTMENT OF TRANSPORTATION  
DISTRICT THREE  
AS BUILT INFORMATION

\_\_\_\_\_  
SUPERVISING CONSTRUCTION FIELD ENGINEER

\_\_\_\_\_  
RESIDENT ENGINEER / TECHNICIAN

START & END DATES  
OF CONSTRUCTION:

INSPECTORS:

STATE OF ILLINOIS  
DEPARTMENT OF TRANSPORTATION  
DISTRICT THREE

REVIEWED BY: *Don Beavil*  
DISTRICT STUDIES & PLANS ENGINEER

DATE: 5-23-17

EXAMINED BY: *[Signature]*  
DISTRICT CONSTRUCTION ENGINEER

*[Signature]*  
DISTRICT MATERIALS ENGINEER

*[Signature]*  
DISTRICT OPERATIONS ENGINEER

FILE NAME =	USER NAME = woodshankr1	DESIGNED -	REVISED -
pl\11084EBID\INTEG\Illinois.gov\PIWIDOT\Documents\IDOT Offices\District 3\Projects\036-DRAWING\056H29-details.dgn		CHECKED -	REVISED -
Default	PLOT SCALE = 100.0000 / in.	DATE -	REVISED -
	PLOT DATE = 4/6/2017		

STATE OF ILLINOIS  
DEPARTMENT OF TRANSPORTATION

**GENERAL NOTES**

SCALE: SHEET 1 OF 1 SHEETS STA. TO STA.

F.A.T. RTE.	SECTION	COUNTY	TOTAL SHEETS	SHEET NO.
55	5311,2,3,4,6,1PP	LIVINGSTON	11	2
CONTRACT NO. 66H29			ILLINOIS FED. AID PROJECT	

CODE NO.	ITEM	UNIT	TOTAL QUANTITY	CONSTR. CODE
				CONTRACT MAINT. 100% STATE ROADWAY 0004 RURAL
44200620	CLASS A PATCHES, TYPE II, 14 INCH	SO YD	750	750
44200624	CLASS A PATCHES, TYPE III, 14 INCH	SO YD	156	156
44200628	CLASS A PATCHES, TYPE IV, 14 INCH	SO YD	241	241
44213000	PATCHING REINFORCEMENT	SO YD	1147	1147
44213200	SAW CUTS	FOOT	3902	3902
44213204	TIE BARS 3/4"	EACH	3953	3953
67100100	MOBILIZATION	LSUM	1	1
70100420	TRAFFIC CONTROL AND PROTECTION, STANDARD 701411	EACH	8	8
70103815	TRAFFIC CONTROL SURVEILLANCE	CAL DA	20	20
78008210	POLYUREA PAVEMENT MARKING TYPE I - LINE 4"	FOOT	982	982
78008230	POLYUREA PAVEMENT MARKING TYPE I - LINE 6"	FOOT	1130	1130
X0326880	MESSAGE BOARD VEHICLE DRIVER	HOOR	216	216
X0326907	PORTABLE, VEHICLE MOUNTED, CHANGEABLE MESSAGE SIGN	CAL MO	1	1
X7010805	TRAFFIC CONTROL AND PROTECTION, STANDARD 701401 (SPECIAL)	LSUM	1	1

14  
\*SPECIALITY ITEMS

FILE NAME =	USER NAME = woodshenk1	DESIGNED -	REVISED -	<b>STATE OF ILLINOIS DEPARTMENT OF TRANSPORTATION</b>	<b>SUMMARY OF QUANTITIES</b>			F.A.I. RTE. 55	SECTION 531.2.3.4.61PP	COUNTY LIVINGSTON	TOTAL SHEETS 11	SHEET NO. 3
Documents\IDOT Of Files\District 3\Projects\0368\DRAWING\DATA\66H29-detailed.dgn	PLOT SCALE = 100.0000' / 1" =	CHECKED -	REVISED -					SCALE:	SHEET 1	OF 2	SHEETS	STA.
Default	PLOT DATE = 5/22/2017	DATE -	REVISED -		[ILLINOIS] FED. AID PROJECT							
					REV							

CODE NO.	ITEM	UNIT	TOTAL QUANTITY	CONSTR. CODE
				CONTRACT MAINT. 100% STATE ROADWAY 0004 RURAL
X7015005	CHANGEABLE MESSAGE SIGN	CAL DA	72	72

FILE NAME :	USER NAME = woodshank-l	DESIGNED -	REVISED -	<b>STATE OF ILLINOIS DEPARTMENT OF TRANSPORTATION</b>	<b>SUMMARY OF QUANTITIES</b>	F.A.I. RTE.	SECTION	COUNTY	TOTAL SHEETS	SHEET NO.	
p:\IL084EBID\INTEG.illinois.gov\2\IDOT\Documents\IDOT Offices\District 3\Projects\0368-DRAWING\66H29-details.dgn	DRAWN	REVISED -	REVISED -			55	53(1,2,3,4,6)PP	LIVINGSTON	11	4	
Default	PLOT SCALE = 100.0000' / in.	CHECKED -	REVISED -			SCALE:		SHEET 2 OF 2 SHEETS		STA. TO STA.	CONTRACT NO. 66H29
	PLOT DATE = 5/22/2017	DATE -	REVISED -			ILLINOIS FED. AID PROJECT					

REV





SCHEDULES - PATCHING SOUTHBOUND LANES

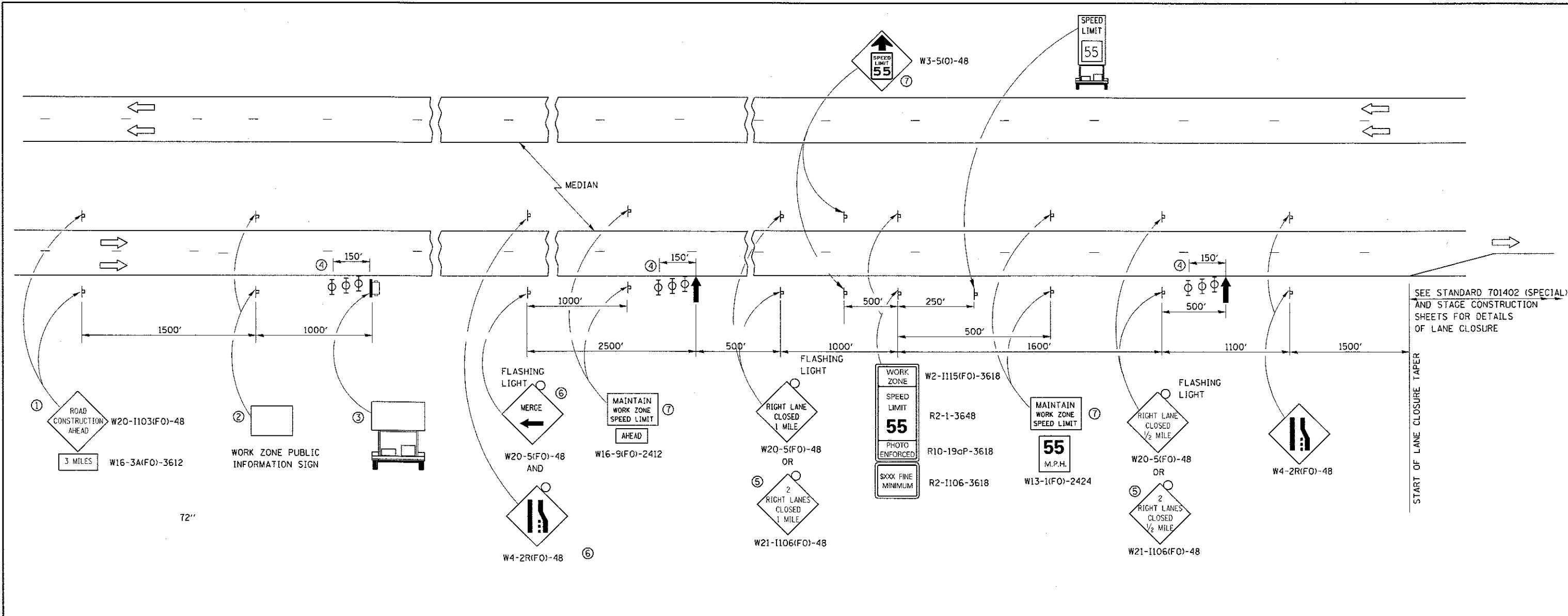
LOCATION	PASSING LANE							PASSING LANE							
	PATCH LENGTH	CLASS A PATCHING			PATCH REINF.	SAW CUTS	TIE BARS 3/4"	PATCH LENGTH	CLASS A PATCHING			PATCH REINF.	SAW CUTS	TIE BARS 3/4"	
		TYPE II 14"	TYPE III 14"	TYPE IV 14"					TYPE II 14"	TYPE III 14"	TYPE IV 14"				
MILE MARKER	FEET	SQ YD	SQ YD	SQ YD	SQ YD	FOOT	EACH	FEET	SQ YD	SQ YD	SQ YD	SQ YD	FOOT	EACH	
215.40	6	8			8	36	42								
214.90								6	8				8	36	42
210.70	10	13			13	44	42							42	
210.20								6	8				8	36	42
208.00	8	11			11	40	42								
207.80	6	8			8	36	42								
207.80								6	8				8	36	42
204.60								10	13				13	44	42
204.40								10	13				13	44	42
204.30								15		20			20	54	42
200.60	10	13			13	44	42								
200.60								20			27		27	64	52
200.60	6	8			8	36	42								
200.55								8	11				11	40	42
200.50								8	11				11	40	42
200.45								10	13				13	44	42
200.05								8	11				11	40	42
199.99								6	8				8	36	42
199.95								8	11				11	40	42
199.94								15		20			20	54	42
199.94	10	13			13	44	42								
199.94								20			27		27	64	52
199.60								10	13				13	44	42
199.60								10	13				13	44	42
199.50	10	13			13	44	42								
199.50								25			33		33	74	54
199.50	30			40	40	84	57								
199.50								12		16			16	48	42
199.50	8	11			11	40	42								
199.45								10	13				13	44	42
199.45								10	13				13	44	42
199.45	8	11			11	40	42								
199.45								6	8				8	36	42
199.45								8	11				11	40	42
199.45								15		20			20	54	42
199.45								10	13				13	44	42
199.43								8	11				11	40	42
199.43								8	11				11	40	42
199.43								15		20			20	54	42
199.41								8	11				11	40	42
199.41								15		20			20	54	42
199.41								6	8				8	36	42
199.41								6	8				8	36	42
199.41								6	8				8	36	42
199.41								6	8				8	36	42
199.41								6	8				8	36	42
199.41								6	8				8	36	42
199.40								6	8				8	36	42
199.39								6	8				8	36	42
199.15								8	11				11	40	42
199.00	10	13			13	44	42								
198.70								6	8				8	36	42
198.40								6	8				8	36	42
198.39								10	13				13	44	42
198.39								6	8				8	36	42
197.50								8	11				11	40	42
197.10								6	8				8	36	42
TOTALS	122	122		40	162	532	519	412	347	116	87	550	1856	1880	

SCHEDULE - PAVEMENT MARKING SOUTHBOUND

LOCATION	POLYUREA PAVEMENT MARKING TYPE I LINE 4"		POLYUREA PAVEMENT MARKING TYPE I LINE 6"
	FEET		FEET
	YELLOW	WHITE	WHITE
215.40	6	6	10
214.90			10
210.70	10	6	10
210.20			10
208.00	8		10
207.80	6	6	10
207.80		10	10
204.60		10	10
204.40		15	20
204.30			10
200.60	10	20	20
200.60			10
200.60	6	8	10
200.55		8	10
200.50		10	10
200.45		8	10
200.05		6	10
199.99		8	10
199.95		15	20
199.94			10
199.94	10	20	20
199.94		10	10
199.60		10	10
199.60			10
199.50	10	25	30
199.50			10
199.50	30	12	20
199.50			10
199.50	8	10	10
199.50		10	10
199.45			10
199.45	8	6	10
199.45		8	10
199.45		15	20
199.45		10	10
199.45		8	10
199.43		8	10
199.43		15	20
199.43		8	10
199.41		15	20
199.41		6	10
199.41		6	10
199.41		6	10
199.41		6	10
199.41		6	10
199.40		6	10
199.39		8	10
199.15		8	10
199.00	10	6	10
198.70		6	10
198.40		10	10
198.39		6	10
198.39		8	10
197.50		6	10
197.10			10
SUBTOTAL	122	420	
SB TOTALS		542	650

SBL PATCHING TOTALS

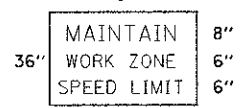
CLASS A PATCHING			PATCH REINF.	SAW CUTS	TIE BARS 3/4"
TYPE II 14"	TYPE III 14"	TYPE IV 14"			
SQ YD	SQ YD	SQ YD	SQ YD	FOOT	EACH
469	116	127	712	2388	2399



72"

- ① THE ROAD CONSTRUCTION AHEAD SIGN SHALL BE LOCATED 3 MILES IN ADVANCE OF THE PROJECT LIMITS.
- ② THE MESSAGE AND SIZE OF THE WORK ZONE PUBLIC INFORMATION SIGN SHALL BE AS SPECIFIED BY THE DEPARTMENT.
- ③ TO BE PLACED IN THE MEDIAN WHEN FEASIBLE. THE MESSAGE BOARD SHALL BE USED TO DISPLAY STATUS OF LANES WITHIN THE PROJECT. THE PRIMARY MESSAGES SHALL BE:  
 "RIGHT LANE CLOSED" / " x MILES AHEAD"  
 "LEFT LANE CLOSED" / " x MILES AHEAD"  
 "ALL LANES OPEN"
- ④ THREE, TYPE II BARRICADES, DRUMS, OR VERTICAL BARRICADES AT 50' CENTERS.
- ⑤ THIS SIGN SHALL BE USED WHEN 2 LANES ARE CLOSED.
- ⑥ WHEN THE LEFT LANE IS CLOSED, SWITCH THESE TWO SIGNS AND THE DIRECTION OF THE MERGE ARROW.
- ⑦ THIS SIGN SHALL ONLY BE USED IF THE EXISTING SPEED LIMIT IS GREATER THAN 65 MPH.

⑦ 48"x36" FLUORESCENT ORANGE SIGN WITH BLACK LETTERS.



- ↑ ARROW BOARD
- ▭ PORTABLE CHANGEABLE MESSAGE SIGN
- ⊥ SIGN
- ⊕ TYPE II BARRICADE, DRUM, OR VERTICAL BARRICADE WITH MONODIRECTIONAL FLASHING LIGHT
- 🚚 SPEED DISPLAY TRAILER

**GENERAL NOTE:**

THIS STANDARD IS USED WHERE AT ANY TIME A LANE IS CLOSED ON A FREEWAY/EXPRESSWAY.

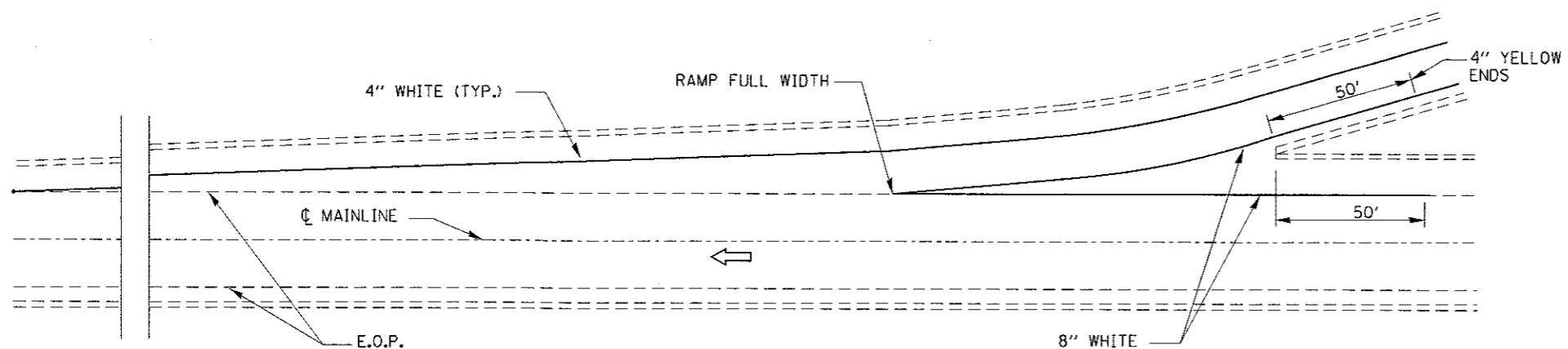
WHEN THE LEFT LANE IS CLOSED, LEFT LANE CLOSED SIGNS SHALL BE SUBSTITUTED FOR THE RIGHT LANE CLOSED SIGNS.

THE FIRST TWO SIGNS AND THE MESSAGE BOARD ARE STATIONARY. THE OTHER SIGNS AND ARROWBOARDS SHALL BE MOVED AS NECESSARY TO MAINTAIN THE REQUIRED DISTANCE FROM THE START OF THE LANE CLOSURE TAPER(S).

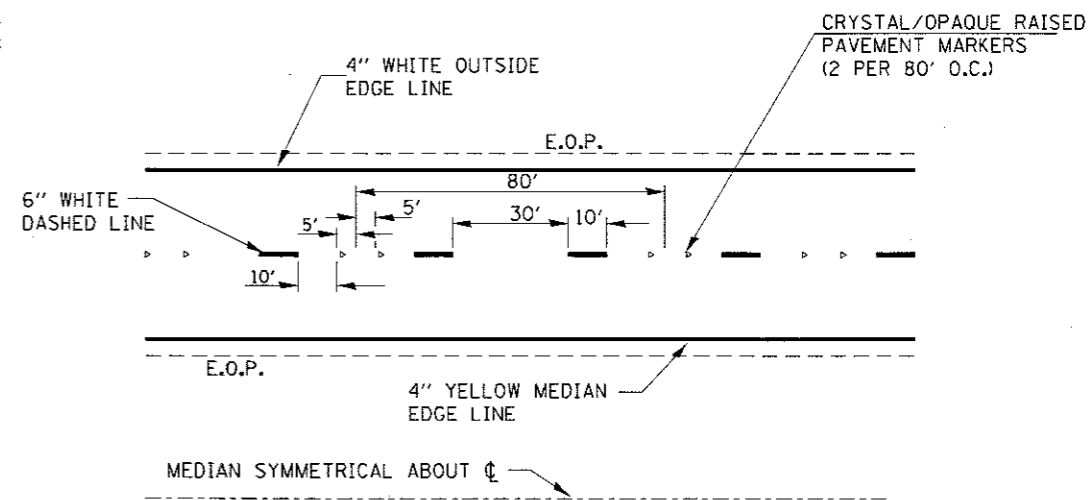
SEE SPECIAL PROVISIONS.

FILE NAME :	USER NAME = woodshankr1	DESIGNED -	REVISED -	<b>STATE OF ILLINOIS DEPARTMENT OF TRANSPORTATION</b>	<b>TRAFFIC CONTROL AND PROTECTION, STANDARD 701400 (SPECIAL)</b>	F.A.I. RTE.	SECTION	COUNTY	TOTAL SHEETS	SHEET NO.
pc:\l\084EBID\INTEG.allinois.gov\PI007\Documents\I007 Offices\District 3\Projects\036-DRAWN\036-Data\66H29-details.dgn		CHECKED -	REVISED -			55	53(1,2,3,4,6)PP	LIVINGSTON	11	8
PLOT SCALE = 100.0000 ' / in.		DATE -	REVISED -			SCALE: SHEET 1 OF 1 SHEETS STA. TO STA.		CONTRACT NO. 66H29		
PLOT DATE = 4/6/2017						ILLINOIS FED. AID PROJECT				

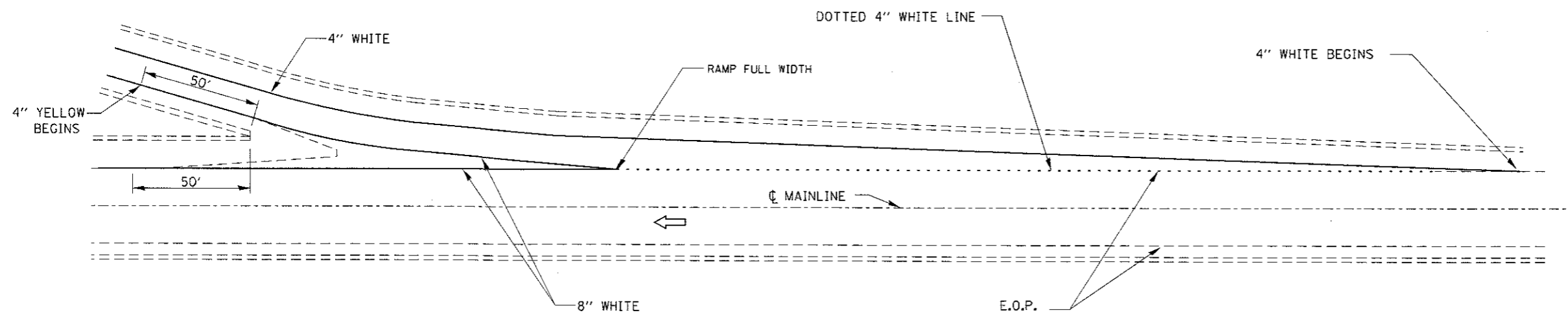




**TYPICAL PAVEMENT MARKING FOR ENTRANCE RAMP TERMINALS**

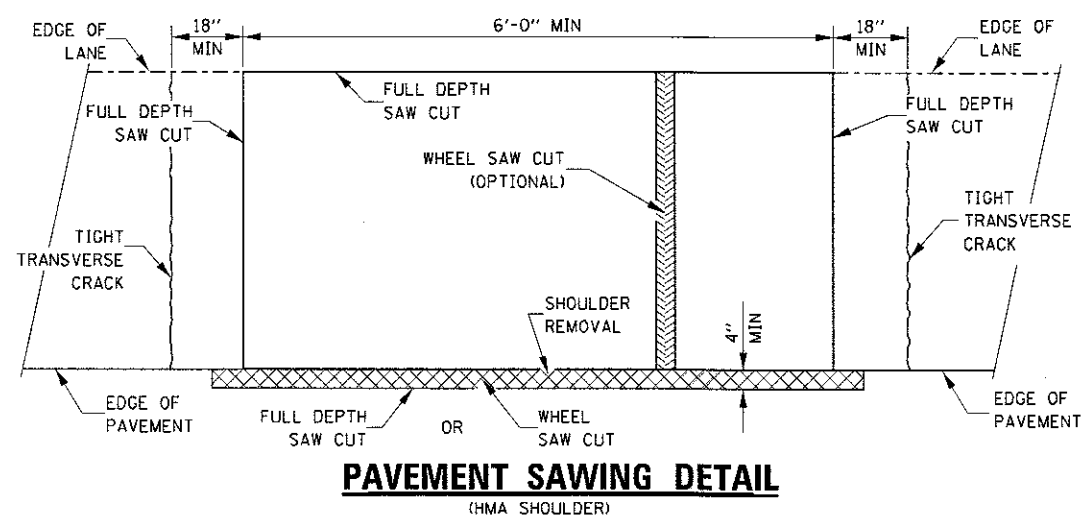


**TYPICAL PAVEMENT MARKINGS**

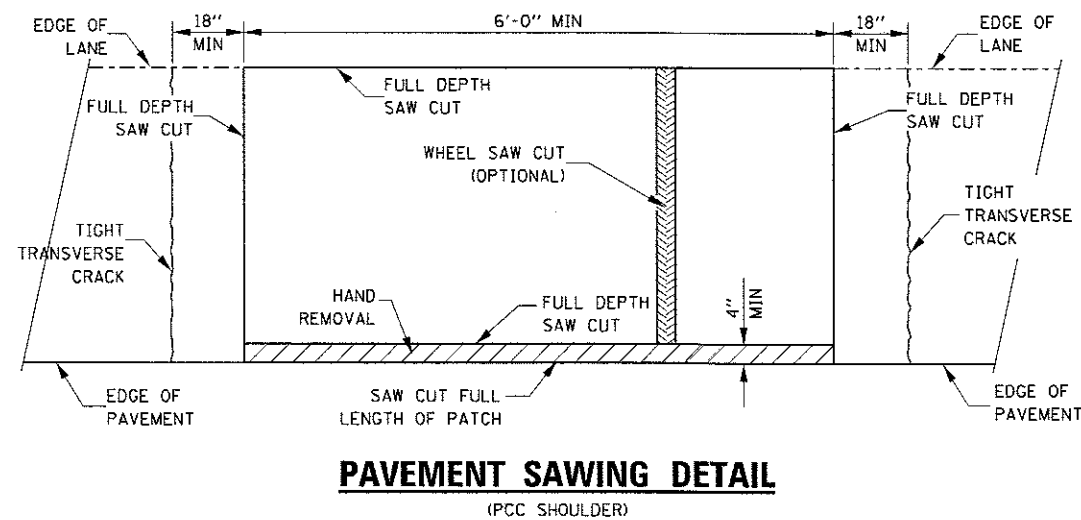


**TYPICAL PAVEMENT MARKINGS FOR EXIT RAMP TERMINALS**

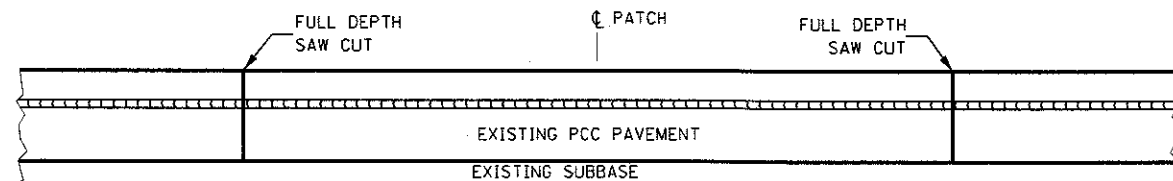
FILE NAME =	USER NAME = woodshenkrl	DESIGNED -	REVISED -	<b>STATE OF ILLINOIS DEPARTMENT OF TRANSPORTATION</b>	<b>PAVEMENT MARKING DETAILS</b>			F.A.I. RTE.	SECTION	COUNTY	TOTAL SHEETS	SHEET NO.
Default	Documents\IDOT Offices\District 3\Projects\0384\Drawings\066H29-detail.dgn	CHECKED -	REVISED -					55	530.2,3,4,6\PP	LIVINGSTON	11	9
	PLOT SCALE = 100.0000' / in.	DATE -	REVISED -		SCALE:	SHEET 1	OF 1	SHEETS	STA.	TO STA.	CONTRACT NO. 66H29 ILLINOIS FED. AID PROJECT	
	PLOT DATE = 4/6/2017											



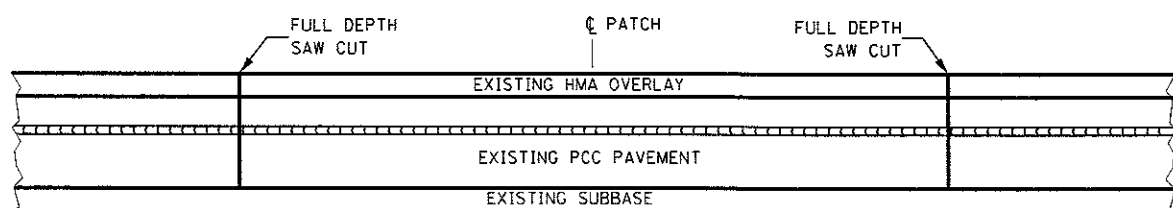
**PAVEMENT SAWING DETAIL**  
(HMA SHOULDER)



**PAVEMENT SAWING DETAIL**  
(PCC SHOULDER)

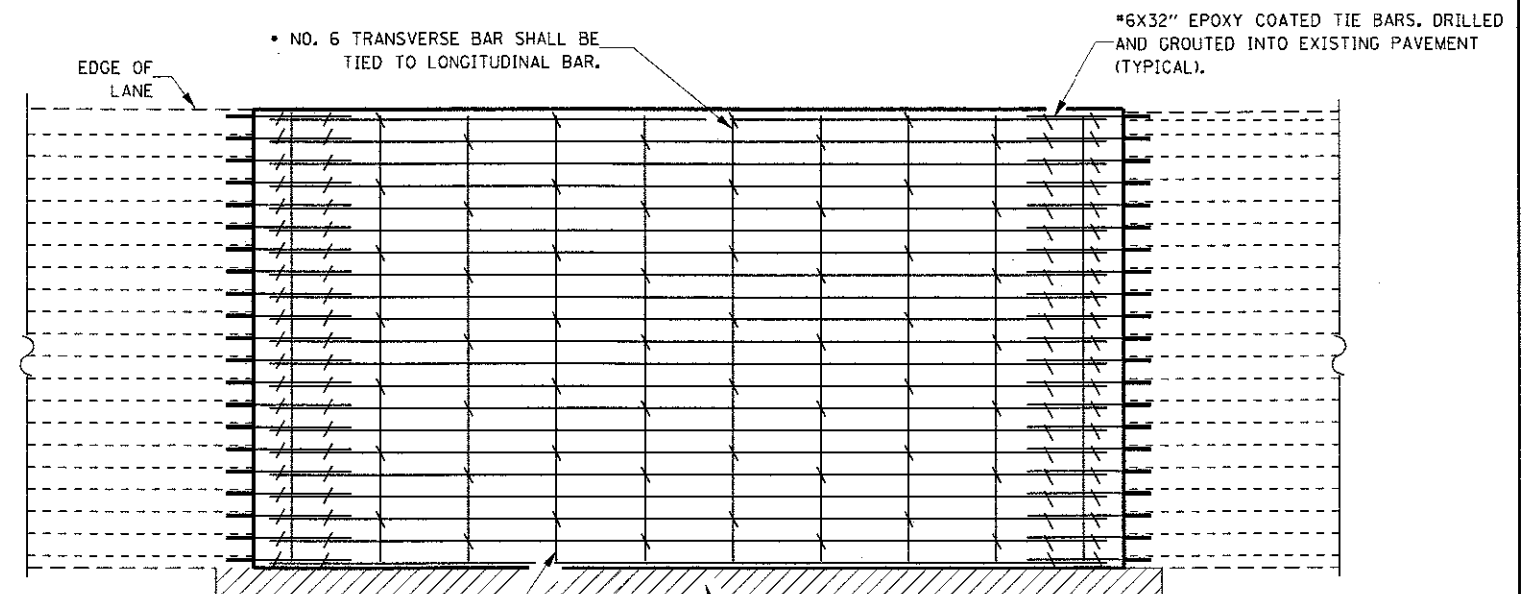


**EXISTING PAVEMENT WITHOUT HMA SURFACE**



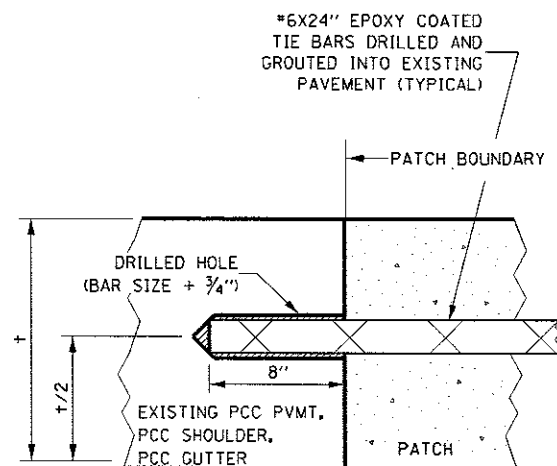
**EXISTING PAVEMENT WITH HMA SURFACE**

**PAVEMENT SAWING DETAIL FOR CLASS A PATCHING**  
**(CRC PAVEMENT)**



**PAVEMENT REINFORCEMENT DETAIL**

TRANSVERSE REBAR SHALL EXTEND TO OUTER LONGITUDINAL REBAR WHILE PROVIDING A MINIMUM 3" CLEARANCE FROM EXISTING PAVEMENT EDGE



**LONGITUDINAL CONSTRUCTION JOINT**

PATCHES MORE THAN 20' IN LENGTH SHALL BE TIED TO ADJACENT PAVEMENT, PCC SHOULDERS OR PCC CURB AND GUTTER WITH #6x24" EPOXY COATED TIE BARS AT 24" CENTERS.

**NOTES:**

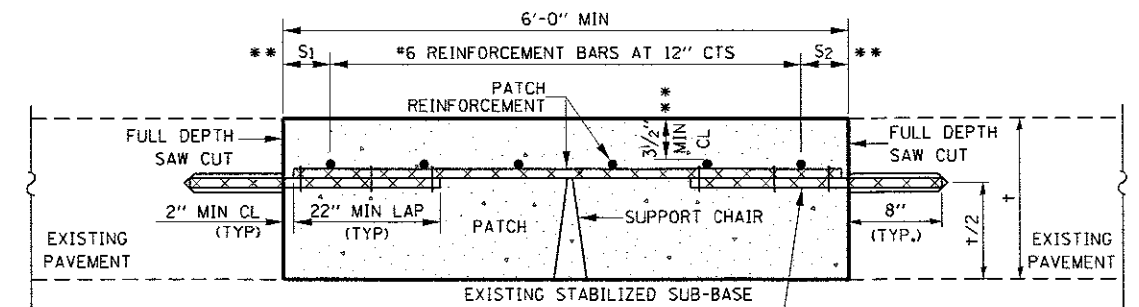
EXISTING LONGITUDINAL REINFORCEMENT SPACING: #6 @ ±6 7/8".

SPACING OF NEW LONGITUDINAL REINFORCEMENT AND NEW LONGITUDINAL TIE BARS SHALL MATCH SPACING OF EXISTING REINFORCEMENT AND SHALL BE TIED TOGETHER WITH A MINIMUM OF TWO TIES PER BAR.

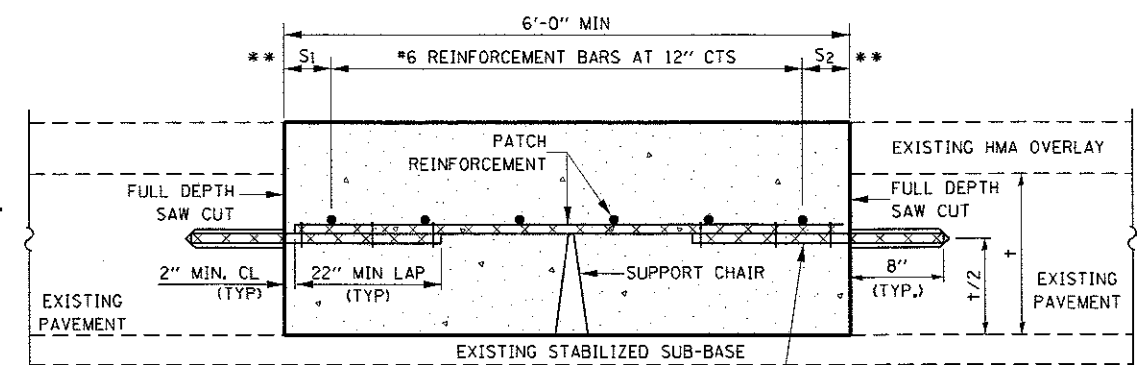
SUPPORT CHAIRS SHALL BE REQUIRED WHENEVER PATCH LENGTH EXCEEDS 6'-0"

\* EVERY THIRD INTERSECTION MUST BE TIED. WHEN THE MINIMUM CLEARANCE CANNOT BE OBTAINED WITH THE TRANSVERSE REBAR ON TOP, THEN THE TRANSVERSE REBAR SHALL BE TIED TO THE BOTTOM OF THE LONGITUDINAL REBAR.

\*\* VARIABLES WHERE S<sub>1</sub> AND S<sub>2</sub> ARE 2 1/2" MIN. AND 12" MAX.



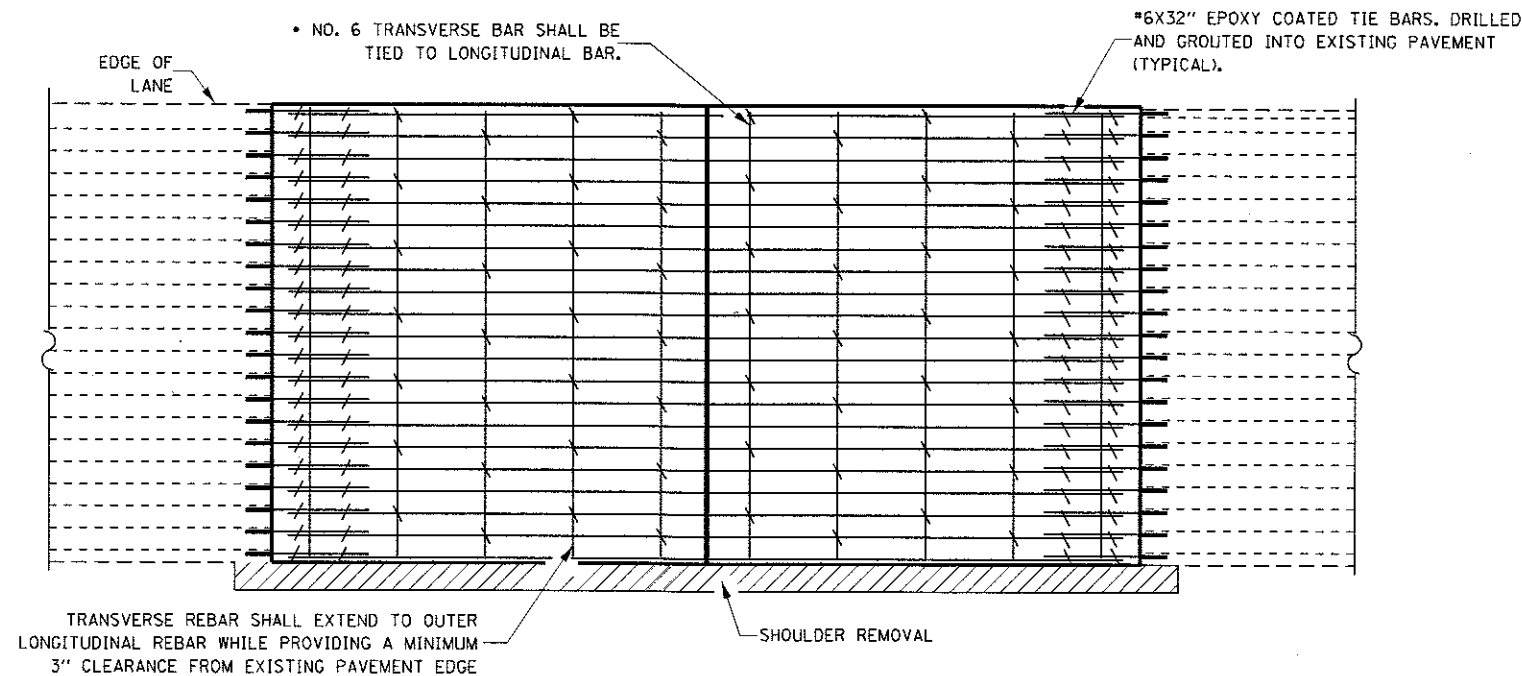
**WITHOUT HMA OVERLAY**



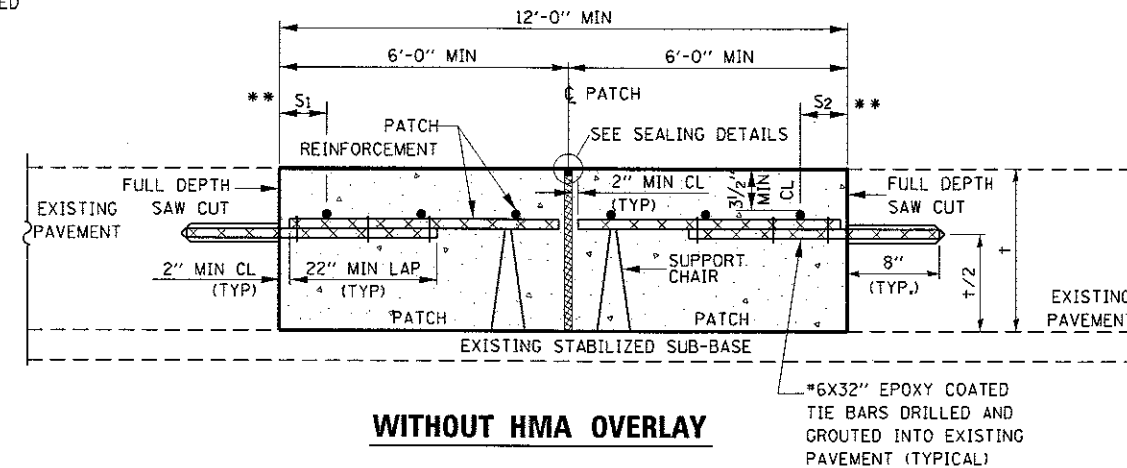
**WITH HMA OVERLAY**

**PATCHING DETAIL FOR CLASS A PATCHING**  
**(CRC PAVEMENT)**

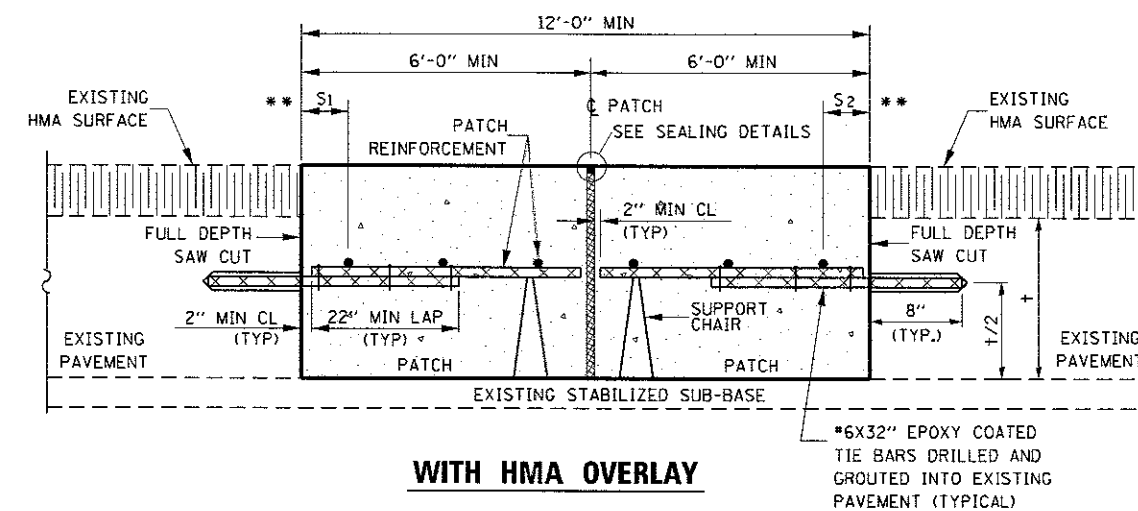
FILE NAME =	USER NAME = woodshankr1	DESIGNED -	REVISED -	<b>STATE OF ILLINOIS</b> <b>DEPARTMENT OF TRANSPORTATION</b>	<b>CLASS A PATCHING DETAILS</b>	F.A.I. RTE.	SECTION	COUNTY	TOTAL SHEETS	SHEET NO.
Default	PLOT SCALE = 1/8" = 1'-0"	CHECKED -	REVISED -			55	531.2,3,4,6,1PP	LIVINGSTON	11	10
	PLOT DATE = 4/6/2017	DATE -	REVISED -			CONTRACT NO. 66H29				
						ILLINOIS FED. AID PROJECT				



**PAVEMENT REINFORCEMENT DETAIL**

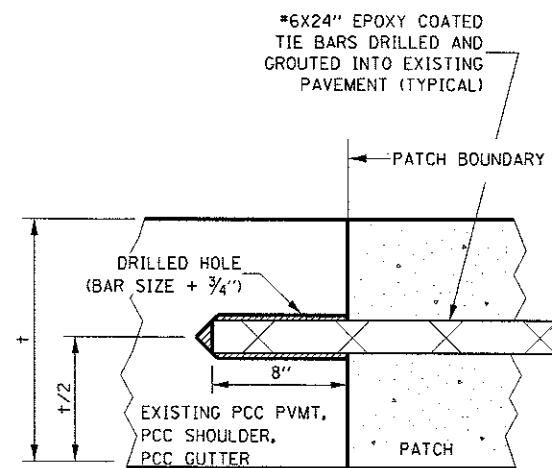


**WITHOUT HMA OVERLAY**



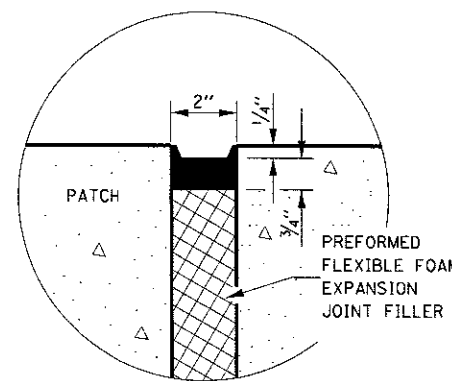
**WITH HMA OVERLAY**

**CLASS A PATCH WITH EXPANSION JOINT**

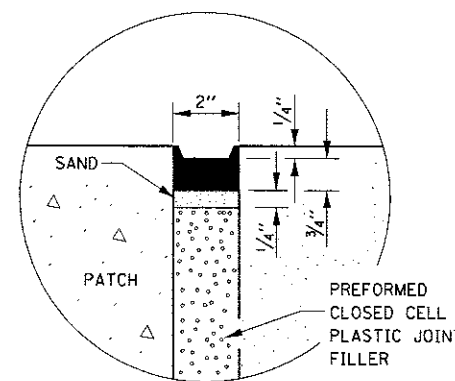


**LONGITUDINAL CONSTRUCTION JOINT**

PATCHES MORE THAN 20' IN LENGTH SHALL BE TIED TO ADJACENT PAVEMENT, PCC SHOULDERS OR PCC CURB AND GUTTER WITH \*6x24" EPOXY COATED TIE BARS AT 24" CENTERS.



**SEALING DETAIL**



**SEALING DETAIL**

**NOTES:**

EXISTING LONGITUDINAL REINFORCEMENT SPACING: \*6 @ ±6 3/8".

SPACING OF NEW LONGITUDINAL REINFORCEMENT AND NEW LONGITUDINAL TIE BARS SHALL MATCH SPACING OF EXISTING REINFORCEMENT AND SHALL BE TIED TOGETHER WITH A MINIMUM OF TWO TIES PER BAR.

SUPPORT CHAIRS SHALL BE REQUIRED WHENEVER PATCH LENGTH EXCEEDS 6'-0"

\* EVERY THIRD INTERSECTION MUST BE TIED. WHEN THE MINIMUM CLEARANCE CANNOT BE OBTAINED WITH THE TRANSVERSE REBAR ON TOP, THEN THE TRANSVERSE REBAR SHALL BE TIED TO THE BOTTOM OF THE LONGITUDINAL REBAR.

\*\* VARIABLES WHERE S<sub>1</sub> AND S<sub>2</sub> ARE 2 1/2" MIN. AND 12" MAX.

FILE NAME =	USER NAME = woodshankr1	DESIGNED -	REVISED -	<b>STATE OF ILLINOIS DEPARTMENT OF TRANSPORTATION</b>	<b>CLASS A PATCHING DETAILS</b>	F.A.I. RTE.	SECTION	COUNTY	TOTAL SHEETS	SHEET NO.	
p:\11084E810INTEG.illinois.gov\PHIDOT\Documents\IDOT Offices\District 3\Projects\0368\Drawings\66H29\details.dgn	PLOT SCALE = 100.0000 / in.	CHECKED -	REVISED -			55	53(1,2,3,4,6)PP	LIVINGSTON	11	11	
Default	PLOT DATE = 4/6/2017	DATE -	REVISED -			SCALE: SHEET 2 OF 2 SHEETS STA. TO STA.		CONTRACT NO. 66H29			
						ILLINOIS FED. AID PROJECT					