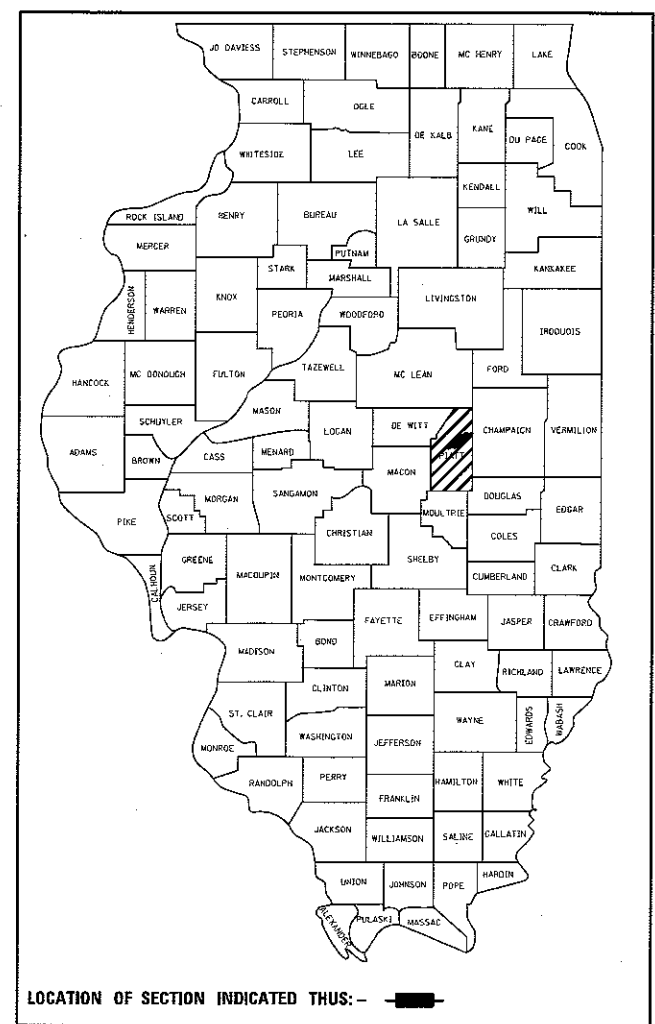


F.A.I. RTE.	SECTION	COUNTY	TOTAL SHEETS	SHEET NO.
72	*	PIATT	5	1
		ILLINOIS	CONTRACT NO. 70C63	

\* D5 POLLINATOR REHAB 2018-1

D95-019-17



STATE OF ILLINOIS  
DEPARTMENT OF TRANSPORTATION  
DIVISION OF HIGHWAYS

**PROPOSED  
HIGHWAY PLANS**

FAI ROUTE 72 (I-72)  
SECTION D5 POLLINATOR REHAB 2018-1  
PROJECT  
D5 POLLINATOR REHAB  
PIATT COUNTY

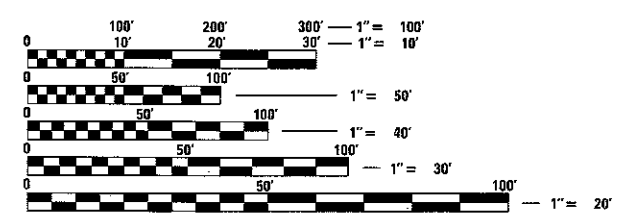
C-95-019-17

E. OF IL 105 TO PIATT/CHAMPAIGN CO LINE

FOR INDEX OF SHEETS, SEE SHEET NO. 2  
FOR SUMMARY OF QUANTITIES, SEE SHEET NO. 3

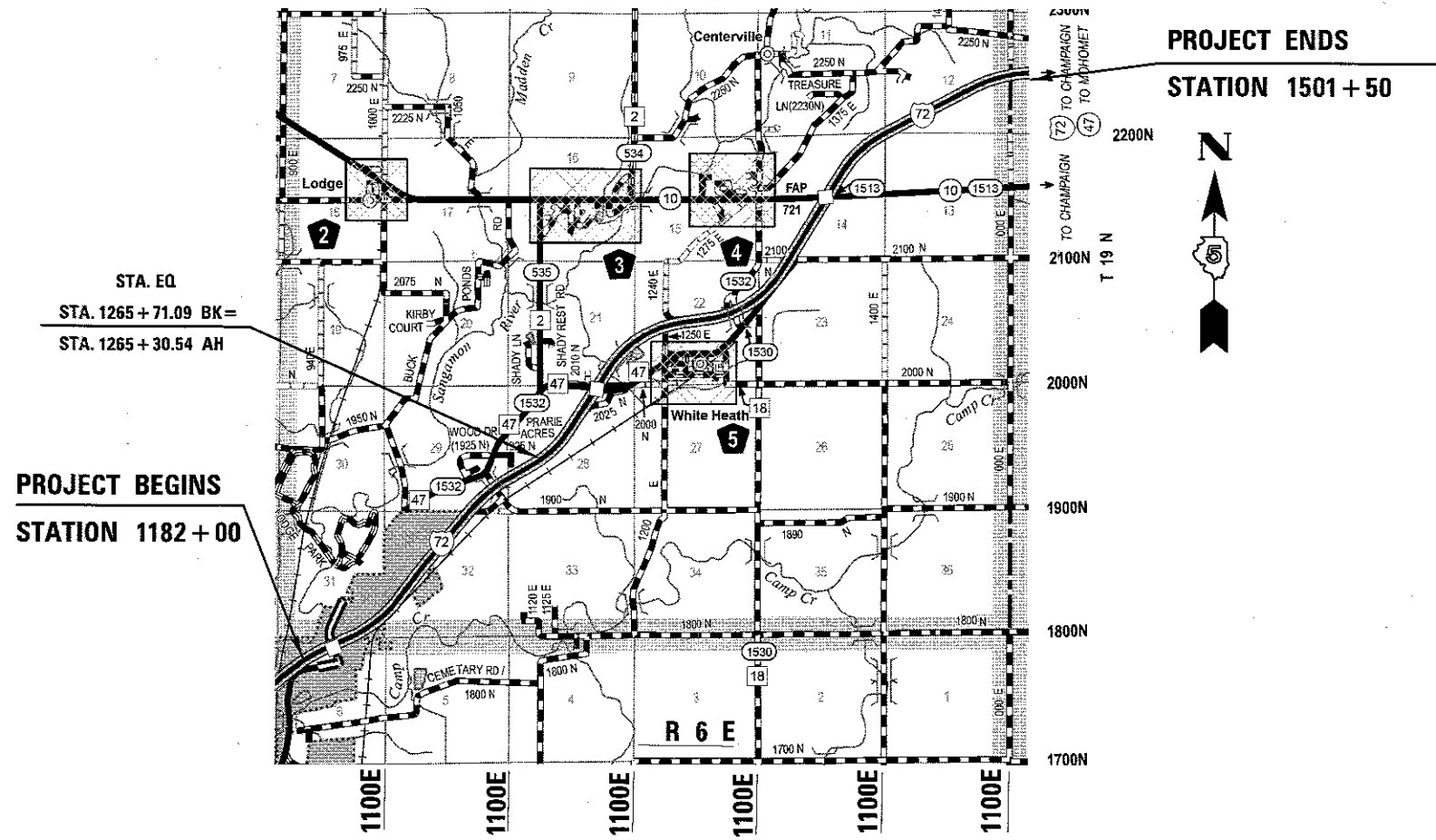
DESIGN DESIGNATION  
INTERSTATE

CURRENT ADT: 14,200 (2016)

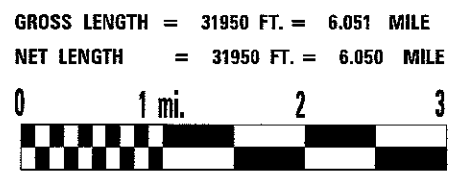


FULL SIZE PLANS HAVE BEEN PREPARED USING STANDARD ENGINEERING SCALES. REDUCED SIZED PLANS WILL NOT CONFORM TO STANDARD SCALES. IN MAKING MEASUREMENTS ON REDUCED PLANS, THE ABOVE SCALES MAY BE USED.

J.U.L.I.E.  
JOINT UTILITY LOCATION INFORMATION FOR EXCAVATION  
1-800-892-0123  
OR 811  
SANGAMON TOWNSHIP



PROJECT ENGINEER JASON STULTS 217-466-7364  
PROJECT MANAGER MICHAEL LEROY 217-466-7228  
CONTRACT NO. 70C63



STATE OF ILLINOIS  
DEPARTMENT OF TRANSPORTATION  
DIVISION OF HIGHWAYS

SUBMITTED May 11 2017  
Jason Stults REGION ENGINEER

June 30 2017  
Maureen M. Adams, P.E. ENGINEER OF DESIGN AND ENVIRONMENT

June 30 2017  
Michael Leroy DIRECTOR OF PROGRAM DEVELOPMENT

PRINTED BY THE AUTHORITY  
OF THE STATE OF ILLINOIS

INDEX OF SHEETS

- 1 COVER SHEET
- 2 INDEX OF SHEETS
- 2 HIGHWAY STANDARDS
- 2 GENERAL NOTES
- 3 SUMMARY OF QUANTITIES
- 4-5 SCHEDULE OF QUANTITIES

GENERAL NOTES

G.N. -100  
 ENGLISH UNITS OF MEASUREMENT SHALL GOVERN OVER AND SUPERSEDE ANY METRIC UNITS SHOWN IN THIS CONTRACT. WHERE INCLUDED, METRIC UNITS ARE FOR INFORMATION ONLY.

G.N. -100A  
 ELECTRONIC FILES AND/OR ELECTRONIC SURVEY INFORMATION INCLUDING CADD FILES WILL NOT BE AVAILABLE TO THE CONTRACTOR.

G.N. -202  
 GRADING SHALL BE DONE BY HAND AROUND LIGHT POLES, UTILITY POLES, SIGN POSTS, SHRUBS, TREES OR OTHER NATURAL OR MAN-MADE OBJECTS WHERE SHALLOW FILLS OR CUTS ARE ADJACENT TO THE ITEMS. IT IS THE INTENT THAT THE LIMITS OF CONSTRUCTION BE SUCH AS TO PRESERVE IN THE ORIGINAL STATE AS MUCH AREA OF TEMPORARY EASEMENTS AS POSSIBLE. THE DECISION AS TO ITEMS TO REMAIN IN PLACE SHALL BE AS DIRECTED BY THE ENGINEER.

THIS WORK WILL NOT BE PAID FOR SEPARATELY, BUT SHALL BE CONSIDERED INCLUDED IN THE CONTRACT UNIT PRICE PER ACRE FOR SELECTIVE CLEARING AND NO ADDITIONAL COMPENSATION WILL BE ALLOWED

G.N. -250C  
 SEEDING, CLASS 7 AND MULCH, METHOD 2 IS INCLUDED IN THIS CONTRACT TO SEED DISTURBED EARTH EMBANKMENT DURING TIME PERIODS WHEN PERMANENT SEEDING IS NOT ALLOWED. SOME OR ALL OF THE CLASS 7 SEEDING AND MULCH WILL BE DELETED IF IT IS POSSIBLE TO PLACE PERMANENT SEEDING ON EARTH SHOULDERS AT THE TIME OF THEIR COMPLETION.

COMMITMENTS  
 THERE ARE NO COMMITMENTS ON THIS CONTRACT

HIGHWAY STANDARDS

- 000001-06 STANDARD SYMBOLS, ABBREVIATIONS, AND PATTERNS
- 001006 DECIMAL OF AN INCH AND OF A FOOT
- 280001-07 TEMPORARY EROSION CONTROL SYSTEMS
- 701101-05 OFF-RD OPERATIONS, MULTILANE, 15' (4.5m) TO 24" (600mm) FROM PAVEMENT EDGE
- 701106-02 OFF-RD OPERATIONS, MULTILANE, MORE THAN 15' (4.5m) AWAY
- 701901-06 TRAFFIC CONTROL DEVICES

FILE NAME :	USER NAME = LERDYM4	DESIGNED -	REVISED -	<b>STATE OF ILLINOIS DEPARTMENT OF TRANSPORTATION</b>	<b>INDEX OF SHEETS / LIST OF HIGHWAY STANDARDS</b>	F.A.I. RTE.	SECTION	COUNTY	TOTAL SHEETS	SHEET NO.	
pw:\110848\ID\INTEG\Illinois.gov\PI\DOT\Documents\DOT Offices\District 5\Projects\0570\DRAWING\Design\0570063-shr-gennote.dgn	PLOT SCALE = 40.0000 1/16"	CHECKED -	REVISED -			72	*	PIATT	5	2	
	PLOT DATE = 5/18/2017	DATE -	REVISED -			CONTRACT NO. 70C63					
						ILLINOIS FED. AID PROJECT					

SUMMARY OF QUANTITIES

LOCATION:

FAI 72 (I-72)  
 PIATT CTY  
 STA. 1182+00  
 TO  
 STA. 1501+50  
 RURAL  
 INTERSTATE

CONSTRUCTION CODE:

100% STATE  
 0031

PAY ITEM CODE	PAY ITEM	UNIT	TOTAL	QTY
20100110	TREE REMOVAL (6 TO 15 UNITS DIAMETER)	UNIT	692.0	692
20100210	TREE REMOVAL (OVER 15 UNITS DIAMETER)	UNIT	326.0	326
25000350	SEEDING CLASS 7	ACRE	4.5	4.5
25003326	INTERSEEDING CLASS 5C	ACRE	4.5	4.5
25100115	MULCH METHOD 2	ACRE	4.5	4.5
67100100	MOBILIZATION	LUMP SUM	1.0	1.0
A2006420	TREE, QUERCUS ALBA (WHITE OAK), 2-1/2" CALIPER, BALLED AND BURLAPPED	EACH	5.0	5.0
C2C01863	SHRUB, ARONIA MELANOCARPA (BLACK CHOKEBERRY), CONTAINER GROWN, 3-GALLON	EACH	128.0	128.0
C2C04865	SHRUB, PHYSOCARPUS OPULIFOLIUS (COMMON NINEBARK), CONTAINER GROWN, 5-GALLON	EACH	128.0	128.0
C2C11736	SHRUB, VIBURNUM DENTATUM (ARROWWOOD VIBURNUM), 3' HEIGHT, CONTAINER	EACH	128.0	128.0
D2002972	EVERGREEN, PINUS STROBUS (EASTERN WHITE PINE), 6' HEIGHT, BALLED AND BURLAPPED	EACH	7.0	7
Z0064600	SELECTIVE CLEARING	ACRE	4.5	4.5

FILE NAME =	USER NAME = LERDYM	DESIGNED -	REVISED -	<b>STATE OF ILLINOIS DEPARTMENT OF TRANSPORTATION</b>	<b>SUMMARY OF QUANTITIES</b>	F.A.I. RTE.	SECTION	COUNTY	TOTAL SHEETS	SHEET NO.
PL0T SCALE = 40.0000' / 1"	CHECKED -	REVISED -	72				PIATT	5	3	
PL0T DATE = 5/11/2017	DATE -	REVISED -	CONTRACT NO. 70C63							

REV

### SCHEDULE OF QUANTITIES

				Z0064600	25003326	25000350	25100115
				Selective			
				Clearing	Interseeding	Seeding	Mulch
				AREA	Class 5C	Class 7	Method 2
STATION	TO	STATION	WIDTH	(sq ft)	(acre)	(acre)	(acre)
EB							
1182+00	to	1185+00	30	9000	0.207	0.207	0.207
1185+00		1187+50	15	3750	0.086	0.086	0.086
1194+00		1204+00	30	30000	0.689	0.689	0.689
1209+00	**	1214+50	10	5500	0.126	0.126	0.126
1214+50		1219+00	35	15750	0.362	0.362	0.362
1221+00		1237+00	35	56000	1.286	1.286	1.286
1452+50	**	1469+50	25	42500	0.976	0.976	0.976
1469+50		1478+00	10	8500	0.195	0.195	0.195
1478+00		1490+00	20	24000	0.551	0.551	0.551
				TOTAL:	195,000.0	4.5	4.5
				TOTAL USE:	195,000.0	4.5	4.5

\*\* LEAVE BURNING BUSH

FILE NAME =	USER NAME = LEROYMA	DESIGNED -	REVISED -	<b>STATE OF ILLINOIS DEPARTMENT OF TRANSPORTATION</b>	<b>SCHEDULE OF QUANTITIES</b>	F.A.I. RTE.	SECTION	COUNTY	TOTAL SHEETS	SHEET NO.		
pw:\IL\084EBIDINTEG.illinois.gov\PIWDDT\Documents\DOT Offices\District 5\Projects\0570C63\Drawings\Design\0570C63-shr-SCHEDULE						DRAWN	REVISED	72	•	PIATT	5	4
PLOT SCALE = 40.0000' / in.						CHECKED -	REVISED -	CONTRACT NO. 70C63				
PLOT DATE = 5/11/2017						DATE -	REVISED -	ILLINOIS FED. AID PROJECT				
						SCALE:	SHEET NO.	OF	SHEETS	STA.	TO STA.	

SCHEDULE OF QUANTITIES

TREE NUMBER	STATION	TREE REMOVAL (6 TO 15 UNITS DIAMETER)	TREE REMOVAL (OVER 15 UNITS DIAMETER)	COMMENTS
		20100110	20100210	
		<15	>15	
				Eastbound I-72 starting at west end of job
1	1182+70	10		
2	1182+70	6		
3	1186+10	6		marked on pvmt
4	1186+25	8		
5	1186+35	6		
6	1197+75		20	ash
7	1198+65	6		dead multi stem/marked on pvmt
8	1198+65	6		dead multi stem/marked on pvmt
9	1198+65	6		dead multi stem/marked on pvmt
10	1199+75		22	ash/marked on pvmt
11	1200+75	8		marked on pvmt
12	1200+75	8		marked on pvmt
13	1201+10		18	marked on pvmt
14	1202+00		22	marked on pvmt
15	1206+10		17	ash
16	1206+10		17	ash
17	1206+50		32	ash
18	1221+50	8		marked on pvmt
19	1228+40	12		marked on pvmt
20	1288+15	10		
21	1288+15	8		
22	1288+15	6		
23	1288+15	6		
24	1288+30	10		
25	1288+40	12		
26	1288+40	10		
27	1288+40	8		
28	1288+50	8		
29	1288+50	6		
30	1288+55	9		
31	1319+40		16	
32	1319+40	12		
33	1319+40	10		
34	1325+30	10		cluster
35	1325+30	8		cluster
36	1325+30	6		cluster
37	1325+30	6		cluster
38	1325+30	6		cluster
39	1326+40		16	
40	1326+40	15		
41	1327+60	6		marked on pvmt
42	1327+60	6		marked on pvmt
43	1330+75	13		
44	1330+75	12		
45	1333+30		16	
46	1340+30	6		
47	1340+30	6		
48	1340+30	9		
49	1340+30	9		

TREE NUMBER	STATION	TREE REMOVAL (6 TO 15 UNITS DIAMETER)	TREE REMOVAL (OVER 15 UNITS DIAMETER)	COMMENTS
		20100110	20100210	
50	1340+30	9		
51	1340+30	10		
52	1340+30	8		
53	1340+30	10		
54	1340+30	8		
55	1342+60		34	
56	1344+60	8		cluster
57	1344+60	8		cluster
58	1344+60	8		cluster
59	1344+80	6		cluster/marked on pvmt
60	1344+80	6		cluster/marked on pvmt
61	1344+80	6		cluster/marked on pvmt
62	1344+80	6		cluster/marked on pvmt
63	1344+80	6		cluster/marked on pvmt
64	1344+80	6		cluster/marked on pvmt
65	1344+80	10		cluster/marked on pvmt
66	1344+80	8		cluster/marked on pvmt
67	1344+80	6		cluster/marked on pvmt
68	1344+80	6		cluster/marked on pvmt
69	1344+80	6		cluster/marked on pvmt
70	1344+80	10		cluster/marked on pvmt
71	1344+80	8		cluster/marked on pvmt
72	1344+80	6		cluster/marked on pvmt
73	1344+80	6		cluster/marked on pvmt
74	1344+80	6		cluster/marked on pvmt
75	1344+80	12		cluster/marked on pvmt
76	1344+80	12		cluster/marked on pvmt
77	1345+25	10		cluster/marked on pvmt
78	1346+55	12		marked on pvmt
79	1348+00	8		marked on pvmt
80	1348+00	8		marked on pvmt
81	1350+30	12		marked on pvmt
82	1350+30	10		marked on pvmt
83	1350+30	8		marked on pvmt
84	1350+30	8		marked on pvmt
85	1366+30	12		cluster
86	1366+30	12		cluster
87	1366+30	12		cluster
88	1366+30	12		cluster
89	1375+00	10		
90	1375+00	10		
91	1375+00	12		
92	1375+00	12		
93	1463+25		24	marked on pvmt
94	1463+60		28	marked on pvmt
95	1464+75		20	marked on pvmt
96	1469+25		24	marked on pvmt
TOTAL		692	326	