

STATE OF ILLINOIS
DEPARTMENT OF TRANSPORTATION
DIVISION OF HIGHWAYS

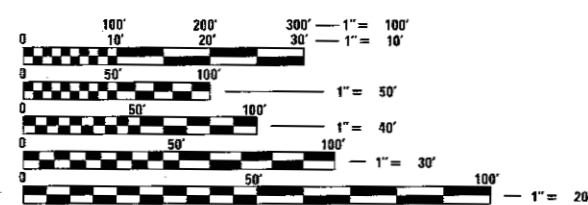
**PROPOSED
HIGHWAY PLANS**

FAS ROUTE 1835 (IL 153)
SECTION 113RS-3
PROJECT STP-1835(001)
RESURFACING IL 153 FROM IL 13 TO IL 154
RANDOLPH COUNTY

C-98-035-16

F.A.S. RTE.	SECTION	COUNTY	TOTAL SHEETS	SHEET NO.
1835	113RS-3	RANDOLPH	24	1
		ILLINOIS	CONTRACT NO. 76J18	

FOR INDEX OF SHEETS, SEE SHEET NO. 2

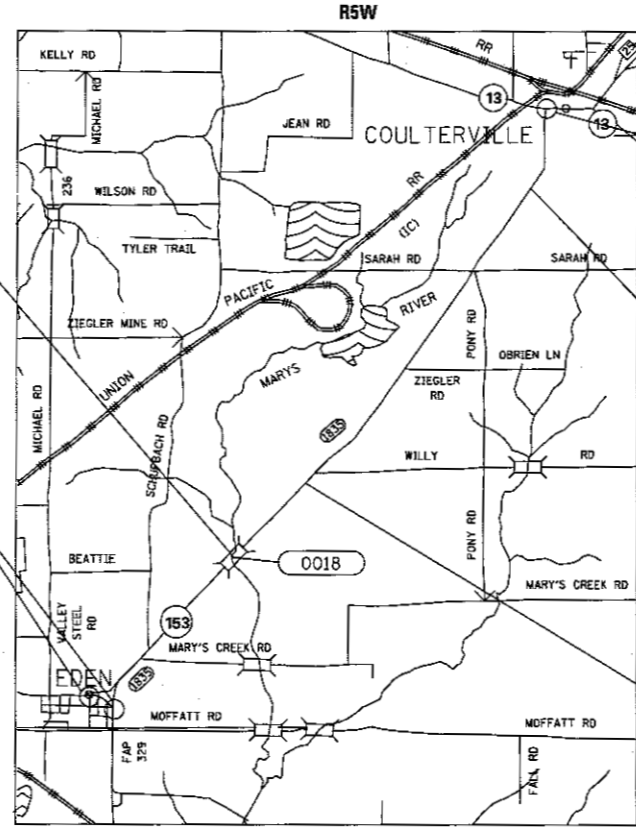


FULL SIZE PLANS HAVE BEEN PREPARED USING STANDARD ENGINEERING SCALES. REDUCED SIZED PLANS WILL NOT CONFORM TO STANDARD SCALES. IN MAKING MEASUREMENTS ON REDUCED PLANS, THE ABOVE SCALES MAY BE USED.

J.U.L.I.E.
JOINT UTILITY LOCATING INFORMATION FOR EXCAVATORS
1-800-892-0123
OR 811

PROJECT ENGINEER: TIM PADGETT (618) 346-3325
PROJECT MANAGER: LIZ BURNSIDE (618) 346-3180

CONTRACT NO. 76J18



SN 079-0018
MILE STA. 4.35 TO 4.36

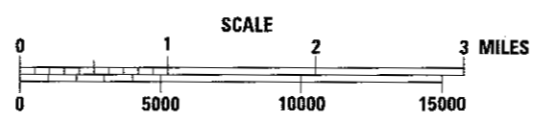
END PROJECT
Y-WEST MILE STA. 5.81
LAT: 38.1219
LONG: 89.6693

Y-EAST MILE STA. 5.719
LAT: 38.1210
LONG: 89.6673

BEGIN PROJECT
MILE STA. 0.00
LAT: 38.1863
LONG: 89.6058

ADT (CITY)
2015 ADT=2850 (ACT)
2017 ADT=2900 (EST)
2037 ADT=3550 (EST)
SU=2.5%, MU=1.8%

ADT (RURAL)
2015 ADT=1800 (ACT)
2017 ADT=1850 (EST)
2037 ADT=2200 (EST)
SU=3.9%, MU=2.8%



GROSS LENGTH = 30,677 FT. = 5.81 MILE
NET LENGTH = 30,677 FT. = 5.81 MILE

STATE OF ILLINOIS
DEPARTMENT OF TRANSPORTATION

SUBMITTED *April 27 2017*
Jeffrey Z. Kan
REGIONAL ENGINEER

June 30 2017
Maween M. Addis
ENGINEER OF DESIGN AND ENVIRONMENT

June 30 2017
Paula A. [Signature]
DIRECTOR OF PROGRAM DEVELOPMENT

PRINTED BY THE AUTHORITY
OF THE STATE OF ILLINOIS

GENERAL NOTES

INDEX OF SHEETS

1	COVER SHEET
2	INDEX, HIGHWAY STANDARDS, GENERAL NOTES, AND COMMITMENTS.
3-6	SUMMARY OF QUANTITIES
7-8	TYPICALS
9-12	SCHEDULE OF QUANTITIES
13	LOCATION MAP
14-16	ADA SIDEWALK PLANS
17-23	PLAT OF HIGHWAYS
24	DETAILS

IDOT HIGHWAY STANDARDS

000001-06
001006
420001-08
424001-09
442201-03
701001-02
701006-05
701201-04
701301-04
701306-03
701311-03
701501-06
701801-06
701901-06
780001-05
781001-04

- ① ILLINOIS STATE LAW REQUIRES A 48-HOUR NOTICE TO BE GIVEN TO UTILITIES BEFORE DIGGING. FIELD MARKING OF FACILITIES MAY BE OBTAINED BY CONTACTING J.U.L.I.E. OR FOR NON-MEMBERS, THE UTILITY COMPANY DIRECTLY. AGENCIES KNOWN TO HAVE FACILITIES WITHIN THE PROJECT AREA ARE AS FOLLOWS:

UTILITY	ABOVE GROUND	BELOW GROUND
•AMEREN ILLINOIS (ELECTRIC&GAS)	X	X
•CLEARWAVE COMMUNICATIONS	X	X
•VILLAGE OF COULTERVILLE (WATER&SEWER)		X
•COUNTRYMARK COOPERATIVE, LLP		X
•EGYPTIAN ELECTRIC COOPERATIVE ASSOC	X	X
•FRONTIER COMMUNICATIONS	X	X
•VERIZON BUSINESS	X	X
•MEDIACOM LLC CENTRAL (CABLE TV)	X	X
•CITY OF SPARTA		X
•WASHINGTON COUNTY WATER CO		X
•ZAYO GROUP LLC	X	X

MEMBERS OF J.U.L.I.E. (800)-892-0123 OR 811 ARE INDICATED BY *. NON J.U.L.I.E. MEMBERS MUST BE NOTIFIED INDIVIDUALLY.

- ② ALL PATCHING ON THIS PROJECT SHALL BE COMPLETED PRIOR TO BITUMINOUS SURFACE REMOVAL.
- ③ A QUANTITY OF 10435 TONS OF MATERIAL TRANSFER DEVICE HAS BEEN ADDED TO THE PLANS. THE STRUCTURE SN 079-0018 AT MI STA 4.35 DOES NOT QUALIFY FOR THE MATERIAL TRANSFER DEVICE.
- ④ THE THICKNESS OF THE BITUMINOUS MIXTURE SHOWN ON THE PLANS IS THE NOMINAL THICKNESS. DEVIATIONS FROM THE NOMINAL THICKNESS WILL BE PERMITTED WHEN SUCH DEVIATIONS OCCUR DUE TO IRREGULARITIES IN THE EXISTING SURFACE OR BASE ON WHICH THE BITUMINOUS MIXTURE IS PLACED.
- ⑤ FLAGGERS SHALL BE PRESENT DURING ALL CLOSURE HOURS, INCLUDING LUNCH HOUR, AND NO ADDITIONAL COMPENSATION SHALL BE ALLOWED.
- ⑥ THE PROPOSED PAVEMENT MARKINGS FROM MI STA 0.38 TO THE END OF THE PROJECT SHALL BE PLACED IN THE SAME LOCATION AS EXISTING OR AS DIRECTED BY THE RESIDENT ENGINEER.
- ⑦ THE CONTRACTOR SHALL BE AWARE THAT THERE ARE MANHOLES & VALVES LOCATED WITHIN THE RESURFACING LIMITS. CARE SHALL BE TAKEN IN THESE LOCATIONS DURING MILLING OPERATIONS
- ⑧ AN INVENTORY SHALL BE PERFORMED PRIOR TO CONSTRUCTION AND AN AUTHORIZED ILLINOIS PROFESSIONAL LAND SURVEYOR WITH A DEPARTMENT PREQUALIFICATION IN "SPECIAL SERVICES - SURVEYING" SHALL RE-STAKE THE FOLLOWING:
- A. ANY RIGHT-OF-WAY OR PROPERTY CORNER MONUMENT THAT IS DISTURBED AS PER SPECIAL PROVISION 666-22F3.
 - B. ANY SECTION OR QUARTER SECTION MONUMENT THAT IS DISTURBED AS PER SPECIAL PROVISION 666-17F3.
- ⑨ IF ANY SECTION OR SUB-SECTION MONUMENT (I.E. STONE, BRASS PLUG, ALUMINUM DISK, IRON PIPE OR PIN, MAG NAIL, CROSS, ETC.) IS ENCOUNTERED, THE ENGINEER SHALL BE NOTIFIED BEFORE SUCH MONUMENT IS REMOVED OR RESURFACED OVER. THE CONTRACTOR SHALL PROTECT AND CAREFULLY PRESERVED THE MONUMENT IN PLACE UNTIL AN ILLINOIS PROFESSIONAL LAND SURVEYOR WITH A DEPARTMENT PREQUALIFICATION IN "SPECIAL SERVICES - SURVEYING HAS REFERENCED ITS LOCATION.
- ⑩ ANY MONUMENT OR PROPERTY CORNER TO BE SET SHALL BE SET BY AN ILLINOIS PROFESSIONAL LAND SURVEYOR WITH A DEPARTMENT PREQUALIFICATION IN "SPECIAL SERVICES - SURVEYING".
- ⑪ 8 CALENDAR DAYS OF TRAFFIC CONTROL SURVEILLANCE HAVE BEEN ADDED TO THE PROJECT TO BE USED AS DIRECTED BY THE RESIDENT ENGINEER.
- ⑫ EARTH EXCAVATION, EMBANKMENT, SEEDING CLASS 2A, FERTILIZER AND MULCH SHALL BE INCLUDED IN THE COST PER SQUARE FOOT FOR THE PAY ITEM PORTLAND SEMENT CONCRETE SIDEWALK. THIS WORK SHALL BE DONE ACCORDING TO SECTIONS 202, 205, 250 AND 251 OF THE STANDARD SPECIFICATIONS.

- ⑬ THE DISTRICT LAND ACQUISITION SECTION SHALL BE CONTACTED IF DIFFERENCES ARE IDENTIFIED BETWEEN ANY PROPOSED RIGHT-OF-WAY OR EASEMENT SHOWN ON THE ENGINEERING PLAN SHEETS AS COMPARED TO THE SAME PROPOSED RIGHT-OF-WAY OR EASEMENT SHOWN ON THE PLAT OF HIGHWAYS. QUESTIONS OR CONCERNS REGARDING THESE ITEMS SHOULD BE DIRECTED TO CLINT MARSHALL AT (618) 346-3124.

- ⑭ THE FOLLOWING MIXTURE REQUIREMENTS ARE APPLICABLE FOR THIS PROJECT:

ROUTE	FAS 1835 IL 153
SECTION	113RS-3
COUNTY	Randolph
CONTRACT	76J18

DESCRIPTION:	3P Resurfacing on IL 153 from IL 13 to IL 154 WYE.
--------------	--

ADT (Construction Yr	2850
MU%:	2.3
SU%:	3.2
20 YR. ESAL'S:	0.48

MIXTURE USE	SURFACE	INCIDENTAL	PATCHING
AC/PG	PG 64-22	PG 64-22	PG 64-22
RAP % (MAX)	SEE SPECIAL PROVISION	SEE SPECIAL PROVISION	SEE SPECIAL PROVISION
DESIGN AIR VOIDS	4.0% @ Ndes=70	4.0% @ Ndes=70	4.0% @ Ndes=70
MIX COMPOSITION (Gradation)	IL 9.5	IL 9.5	IL 19.0
FRICITION AGG	MIXTURE "C"	MIXTURE "C"	MIXTURE "B"
QUALITY MGMT PROGRAM	QCP	QC/QA	QC/QA

MIXTURE USE	LEVEL BINDER	SHOULDERS > 2.25"	SHOULDERS < 2.25"
AC/PG	PG 64-22	PG 64-22	PG 64-22
RAP % (MAX)	SEE SPECIAL PROVISION	SEE SPECIAL PROVISION	SEE SPECIAL PROVISION
DESIGN AIR VOIDS	4.0% @ Ndes=70	4.0% @ Ndes=30	4.0% @ Ndes=30
MIX COMPOSITION (Gradation)	IL 9.5 FG	IL 19.0L	IL 9.5L
FRICITION AGG	MIXTURE "C"		
QUALITY MGMT PROGRAM	QCP	QC/QA	QC/QA

Plan quantities for Bituminous Concrete Surface Course items are calculated using a unit weight of 112 lb/sq yd/in (59.8 kg/sq m/25 mm thickness).

- ⑮ EXTRA MILLING WILL BE REQUIRED AT THE INTERSECTIONS OF IL 153/LOCUST ST AND IL 153/KING ST DUE TO ADA REQUIREMENTS. SEE DETAIL SHEET.
- ⑯ A QUANTITY OF 31,358 FEET OF LONGITUDINAL JOINT SEALANT HAS BEEN ADDED TO THE PLANS AND SHALL BE APPLIED UNDER THE SURFACE LIFT.
- ⑰ NO OVERNIGHT LANE CLOSURES WILL BE ALLOWED.

COMMITMENTS

NONE

FILE NAME =	USER NAME = Burnsdeem	DESIGNED -	REVISED -	STATE OF ILLINOIS DEPARTMENT OF TRANSPORTATION	INDEX, HIGHWAY STANDARDS, GENERAL NOTES AND COMMITMENTS	F.A.S.	SECTION	COUNTY	TOTAL SHEETS	SHEET NO.	
pw\11084EBIDINTEG.illinois.gov\PWIDOTDocuments\IDOT Offices\District 8\Projects\0876\DRAWING\ADSheets\0876J18-sht-pland		CHECKED -	REVISED -			1835	113RS-3	RANDOLPH	24	2	
Default	PLOT SCALE = 100.0000' / in.	DATE -	REVISED -			CONTRACT NO. 76J18					
	PLOT DATE = 5/11/2017					ILLINOIS FED. AID PROJECT					

SUMMARY OF QUANTITIES

SUMMARY OF QUANTITIES				CONSTRUCTION CODE		
				FEDERAL 80% STATE 20% ROADWAY	FEDERAL 80% STATE 20% TRAFFIC SIGNS	STATE 50% CITY 50% ROADWAY
CODE NO.	ITEM	UNIT	TOTAL QUANTITY	0005 RURAL	0021 RURAL	0005 RURAL
44200162	PAVEMENT PATCHING, TYPE IV, 13 INCH	SQ YD	354	354		
44300100	AREA REFLECTIVE CRACK CONTROL TREATMENT	SQ YD	2288	2288		
44300200	STRIP REFLECTIVE CRACK CONTROL TREATMENT	FOOT	58597	58597		
48102100	AGGREGATE WEDGE SHOULDER, TYPE B	TON	1468	1468		
48203021	HOT-MIX ASPHALT SHOULDERS, 6"	SQ YD	12992	12992		
54390140	INSERTION CULVERT LINER 18"	FOOT	57	57		
60603800	COMBINATION CONCRETE CURB AND GUTTER, TYPE B-6.12	FOOT	84		84	
* 66900200	NON-SPECIAL WASTE DISPOSAL	CU YD	5		5	
67000400	ENGINEER'S FIELD OFFICE, TYPE A	CAL MO	3	3		
* 66900450	SPECIAL WASTE PLANS AND REPORTS	L SUM	1		1	
67100100	MOBILIZATION	LSUM	1	1		
* 66900530	SOIL DISPOSAL ANALYSIS	EACH	1		1	
70100450	TRAFFIC CONTROL AND PROTECTION, STANDARD 701201	LSUM	1	1		
70100460	TRAFFIC CONTROL AND PROTECTION, STANDARD 701306	LSUM	1	1		
70102620	TRAFFIC CONTROL AND PROTECTION, STANDARD 701501	LSUM	1	1		
70102640	TRAFFIC CONTROL AND PROTECTION, STANDARD 701801	LSUM	1	1		
70103815	TRAFFIC CONTROL SURVEILLANCE	CAL DA	8		8	

* SPECIALTY ITEM

FILE NAME =	USER NAME = Burnsidesm	DESIGNED -	REVISED -	STATE OF ILLINOIS DEPARTMENT OF TRANSPORTATION	SUMMARY OF QUANTITIES			F.A.S.	SECTION	COUNTY	TOTAL SHEETS	SHEET NO.
<small>\\IL004E8IDINTEG.allinois.gov\PI\DOT\Documents\IDOT Offices\District 8\Projects\0876\Drawings\0876J18\right-plan.dwg</small>					DRAWN	REVISED	REVISED	1835	113RS-3	RANDOLPH	24	4
<small>PLOT SCALE = 100.0000' / 1"</small>					CHECKED -	REVISED -	REVISED -	CONTRACT NO. 76J18				
<small>PLOT DATE = 5/2/2017</small>					DATE -	REVISED -	REVISED -	ILLINOIS FED. AID PROJECT				
					SCALE:	SHEET	OF	SHEETS	STA.	TO STA.		

SUMMARY OF QUANTITIES

SUMMARY OF QUANTITIES				CONSTRUCTION CODE		
				FEDERAL 80% STATE 20% ROADWAY	FEDERAL 80% STATE 20% TRAFFIC SIGNS	STATE 50% CITY 50% ROADWAY
CODE NO.	ITEM	UNIT	TOTAL QUANTITY	0005 RURAL	0021 RURAL	0005 RURAL
70300100	SHORT TERM PAVEMENT MARKING	FOOT	8098	8098		
70300150	SHORT TERM PAVEMENT MARKING REMOVAL	SQ FT	1350	1350		
70300220	TEMPORARY PAVEMENT MARKING - LINE 4"	FOOT	76671	76671		
70300260	TEMPORARY PAVEMENT MARKING - LINE 12"	FOOT	115	115		
70300280	TEMPORARY PAVEMENT MARKING - LINE 24"	FOOT	48	48		
* 78000200	THERMOPLASTIC PAVEMENT MARKING - LINE 4"	FOOT	76671	76671		
* 78000600	THERMOPLASTIC PAVEMENT MARKING - LINE 12"	FOOT	115	115		
* 78000650	THERMOPLASTIC PAVEMENT MARKING - LINE 24"	FOOT	48	48		
* 78100100	RAISED REFLECTIVE PAVEMENT MARKER	EACH	392	392		
78300200	RAISED REFLECTIVE PAVEMENT MARKER REMOVAL	EACH	392	392		
X4401198	HOT-MIX ASPHALT SURFACE REMOVAL, VARIABLE DEPTH	SQ YD	1200			1200
X6660445	RIGHT OF WAY AND PROPERTY CORNERS	EACH	6		6	
X7030005	TEMPORARY PAVEMENT MARKING REMOVAL	SQ FT	25768	25768		
Z0033700	LONGITUDINAL JOINT SEALANT	FOOT	31358	31358		

* SPECIALTY
ITEM

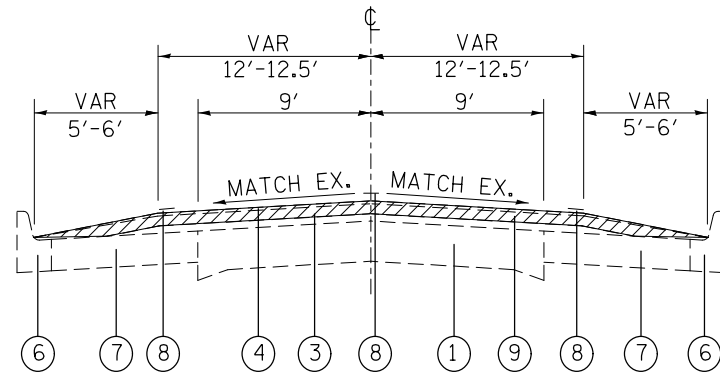
FILE NAME =	USER NAME = Burnsideem	DESIGNED -	REVISED -	STATE OF ILLINOIS DEPARTMENT OF TRANSPORTATION	SUMMARY OF QUANTITIES	F.A.S.	SECTION	COUNTY	TOTAL SHEETS	SHEET NO.	
pe\\l1044EBID\TEG\Illinois.gov\PIB\DOT\Documents\IDOT Offices\District 8\Projects\0878\DRAWING\DATA\ROADSHEETS\0676J18-shr-pln.dwg	Documents\IDOT Offices\District 8\Projects\0878\DRAWING\DATA\ROADSHEETS\0676J18-shr-pln.dwg	CHECKED -	REVISED -			1835	113RS-3	RANDOLPH	24	5	
Default	PLOT SCALE = 1/8" = 100.0000' / 1" in.	DATE -	REVISED -			SCALE: SHEET OF SHEETS STA. TO STA.		CONTRACT NO. 76J18			
	PLOT DATE = 5/2/2017	DATE -	REVISED -			ILLINOIS FED. AID PROJECT					

14

SUMMARY OF QUANTITIES

SUMMARY OF QUANTITIES				CONSTRUCTION CODE		
				FEDERAL 80% STATE 20% ROADWAY	FEDERAL 80% STATE 20% TRAFFIC SIGNS RURAL	STATE 50% CITY 50% ROADWAY RURAL
CODE NO.	ITEM	UNIT	TOTAL QUANTITY			
Z0034105	MATERIAL TRANSFER DEVICE	TON	10435	10435		
∅ Z0076600	TRAINEES	HOUR	1000	1000		
Z0050600	REMOVE AND RESET ORNAMENTAL FENCE	FOOT	50	50		
∅ Z0076604	TRAINEES TRAINING PROGRAM GRADUATE	HOUR	1000	1000		
Z0064505	SECTION CORNER MARKERS	EACH	4		4	

∅ 0042

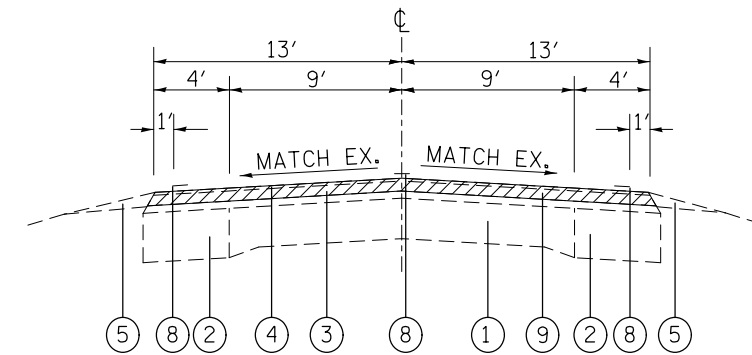


EXISTING TANGENT SECTION

MILE STA 0.00 TO 0.38

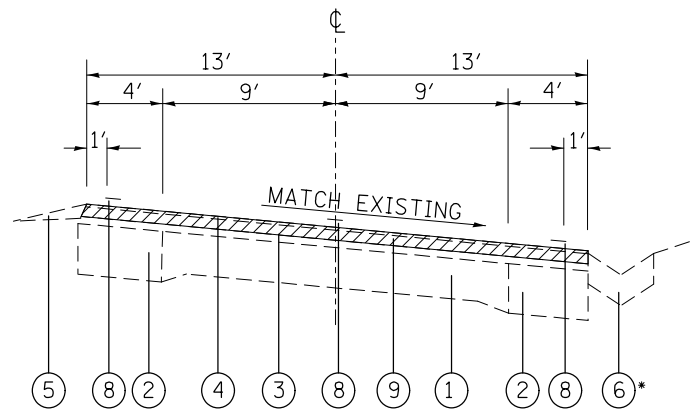
NOTE:

SEE DETAIL SHEET FOR MILLING AT THE INTERSECTIONS OF IL 153/LOCUST ST AND IL 153/KING ST.



EXISTING TANGENT SECTION

MILE STA 0.44 TO 5.59
Y-WEST MILE STA 5.59 TO 5.81
Y-EAST MILE STA 5.59-5.719



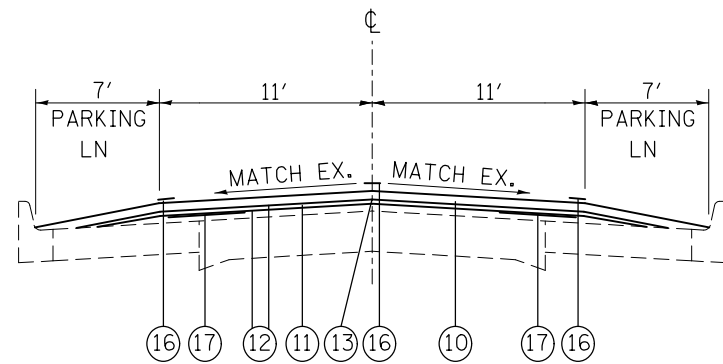
EXISTING SUPERELEVATED SECTION

MILE STA 0.38 TO 0.44
* MILE STA 0.39 TO 0.41 (CURB AND GUTTER)

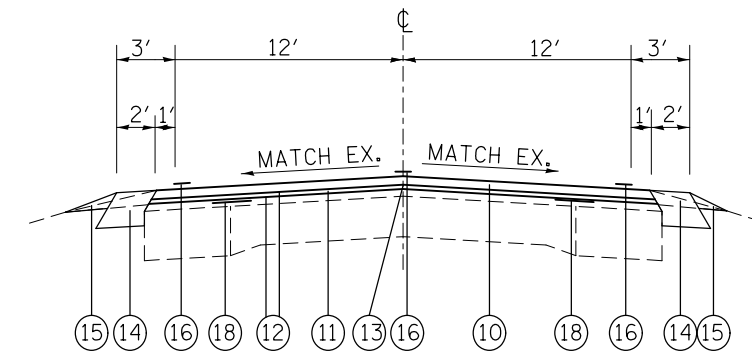
LEGEND

- ① EXISTING CONCRETE PAVEMENT (9'-7"-9")
- ② EXISTING BASE COURSE WIDENING (CONCRETE), 9"
- ③ EXISTING BITUMINOUS SURFACE, VARIES 3-3/4" TO 6"
- ④ EXISTING MICRO-SURFACING, (1/2")
- ⑤ EXISTING AGGREGATE SHOULDER TYPE B WEDGE
- ⑥ EXISTING CURB AND GUTTER
- ⑦ EXISTING BITUMINOUS PARKING LANE
- ⑧ EXISTING PAINT PAVEMENT MARKING LINE, 4"
- ⑨ PROPOSED HMA SURFACE REMOVAL, 2-1/4"
- ⑩ PROPOSED HMA SURFACE COURSE, MIX C, N70, 1-1/2"
- ⑪ PROPOSED LEVEL BINDER COURSE, IL-9.5FG, MIX C, N70, - 3/4"
- ⑫ PROPOSED BITUMINOUS MATERIALS (TACK COAT)
- ⑬ PROPOSED HMA LONGITUDINAL JOINT SEALANT
- ⑭ PROPOSED HMA SHOULDERS - 6"
- ⑮ PROPOSED AGGREGATE WEDGE SHOULDER, TYPE B
- ⑯ PROPOSED THERMOPLASTIC PAVEMENT MARKING LINE, 4"
- ⑰ PROPOSED AREA REFLECTIVE CRACK CONTROL TREATMENT, 5' WIDE
- ⑱ PROPOSED STRIP REFLECTIVE CRACK CONTROL TREATMENT, 2'

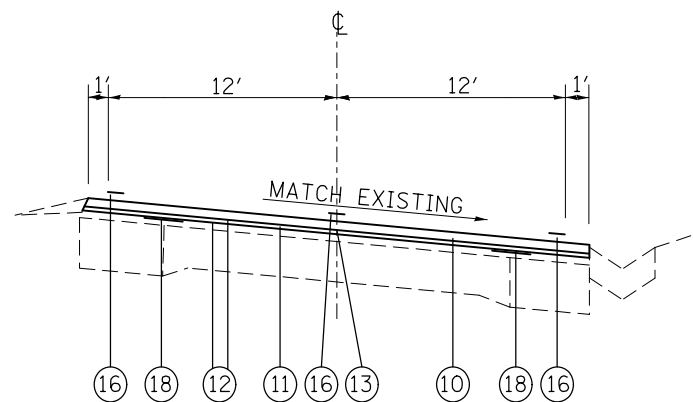
FILE NAME =	USER NAME = Burnsideem	DESIGNED -	REVISED -	STATE OF ILLINOIS DEPARTMENT OF TRANSPORTATION	TYPICAL SECTIONS - EXISTING			F.A.S.	SECTION	COUNTY	TOTAL SHEETS	SHEET NO.
pw:\IL\084EBIDINTEG\illinois.gov\PIDOT\Documents\IDOT Offices\District 8\Projects\0876\Drawings\AD\Drawings\0876\18-sht-plan.dwg	PLotted	CHECKED -	REVISED -					1835	113RS-3	RANDOLPH	24	7
Default	PLOT SCALE = 100.0000' / 1in.	DATE -	REVISED -		CONTRACT NO. 76J18			ILLINOIS FED. AID PROJECT				
	PLOT DATE = 5/11/2017	DATE -	REVISED -		SCALE:	SHEET	OF	SHEETS	STA.	TO	STA.	



PROPOSED TANGENT SECTION
MILE STA 0.00 TO 0.38



PROPOSED TANGENT SECTION
MILE STA 0.44 TO 5.59
Y-WEST MILE STA 5.59 TO 5.81
Y-EAST MILE STA 5.59-5.719



PROPOSED SUPERELEVATED SECTION
MILE STA 0.38 TO 0.44
* MILE STA 0.39 TO 0.41 (CURB AND GUTTER)

LEGEND

- ① EXISTING CONCRETE PAVEMENT (9"-7"-9")
- ② EXISTING BASE COURSE WIDENING (CONCRETE), 9"
- ③ EXISTING BITUMINOUS SURFACE, VARIES 3-3/4" TO 6"
- ④ EXISTING MICRO-SURFACING, (1/2")
- ⑤ EXISTING AGGREGATE SHOULDER TYPE B WEDGE
- ⑥ EXISTING CURB AND GUTTER
- ⑦ EXISTING BITUMINOUS PARKING LANE
- ⑧ EXISTING PAINT PAVEMENT MARKING LINE, 4"
- ⑨ PROPOSED HMA SURFACE REMOVAL, 2-1/4"
- ⑩ PROPOSED HMA SURFACE COURSE, MIX C, N70, 1-1/2"
- ⑪ PROPOSED LEVEL BINDER COURSE, IL-9.5FG, MIX C, N70, - 3/4"
- ⑫ PROPOSED BITUMINOUS MATERIALS (TACK COAT)
- ⑬ PROPOSED HMA LONGITUDINAL JOINT SEALANT
- ⑭ PROPOSED HMA SHOULDERS - 6"
- ⑮ PROPOSED AGGREGATE WEDGE SHOULDER, TYPE B
- ⑯ PROPOSED THERMOPLASTIC PAVEMENT MARKING LINE, 4"
- ⑰ PROPOSED AREA REFLECTIVE CRACK CONTROL TREATMENT, 5' WIDE
- ⑱ PROPOSED STRIP REFLECTIVE CRACK CONTROL TREATMENT, 2'

FILE NAME =	USER NAME = Burnsideem	DESIGNED -	REVISED -
pw:\IL\084EBIDINTEG.illinois.gov\PIWIDOT\Documents\IDOT Offices\District 8\Projects\0876\Drawings\AD\Drawings\0876J18-sht-plan.dwg		DRAWN -	REVISED -
Default	PLOT SCALE = 100.0000' / 1in.	CHECKED -	REVISED -
	PLOT DATE = 5/11/2017	DATE -	REVISED -

**STATE OF ILLINOIS
DEPARTMENT OF TRANSPORTATION**

TYPICAL SECTIONS - PROPOSED

SCALE: SHEET OF SHEETS STA. TO STA.

F.A.S.	SECTION	COUNTY	TOTAL SHEETS	SHEET NO.
1835	113RS-3	RANDOLPH	24	8
			CONTRACT NO. 76J18	
ILLINOIS FED. AID PROJECT				

RESURFACING SCHEDULE													
LOCATION			length	width	area	area	BITUMINOUS MATERIAL (TACK COAT) -2 LIFTS	HMA SURFACE COURSE, MIX "C", N70, IL 9.5. 1-1/2"	LEVEL BINDER COURSE, MIX "C", N70, IL 9.5FG, 3/4"	HMA SURFACE REMOVAL, 2-1/4"	HMA SURFACE REMOVAL VARIABLE DEPTH	AREA REFLECTIVE CRACK CONTROL TREATMENT	STRIP REFLECTIVE CRACK CONTROL TREATMENT
STA	TO	STA			(SQ FT)	(SQ YD)	(POUND)	(TON)	(TON)	(SQYD)	(SQYD)	(SQYD)	(FOOT)
IL 153													
0.0	TO	0.39	2059	36	74131	8237	5560	692	346	7037	1200	2288	
0.390	TO	0.41	106	26	2746	305	206	26	13	305			211
0.41	TO	5.59	27350	26	711110	79012	53333	6637	3319	79012			54701
Y - WEST													
5.59	TO	5.81	1162	26	30202	3356	2265	282	141	3356			2323
Y - EAST													
5.590	TO	5.719	681	26	17709	1968	1328	165	83	1968			1362
TOTAL:						92878	62692	7802	3901	91678	1200	2288	58597

SHOULDER SCHEDULE					
LOCATION			RT/LT	HMA SHOULDER 6"	AGGREGATE WEDGE SHOULDER
STA	TO	STA		(SQYD)	(TON)
IL 153					
0.390	TO	5.590	LT	6101	712
0.415	TO	5.590	RT	6072	708
Y - WEST					
5.590	TO	5.810	RT/LT	516	30
Y - EAST					
5.590	TO	5.719	RT/LT	303	18
TOTAL:				12992	1468

RAISED PAVEMENT MARKERS				
LOCATION			RAISED REFLECTOR PAVEMENT MARKER TWO-WAY AMBER	RAISED REFLECTOR PAVEMENT MARKER REMOVAL
STA	TO	STA	(EACH)	(EACH)
IL 153				
0.00	TO	5.59	369	369
Y - WEST				
5.59	TO	5.81	15	15
Y - EAST				
5.590	TO	5.719	9	9
TOTAL:			392	392

SIDE ROAD SCHEDULE						
LOCATION				BITUMINOUS MATERIAL (TACK COAT) -1 LIFT	INCIDENTAL HMA SURFACING	HMA SURFACE REMOVAL, 2-1/4"
STA	WIDTH	LENGTH	RT/LT	(POUND)	(TON)	(SQYD)
IL 153						
0.06	48	3	RT	10.8	2.0	16.0
0.06	48	3	LT	10.8	2.0	16.0
0.12	45	3	RT	10.1	1.9	15.0
0.12	45	3	LT	10.1	1.9	15.0
0.17	45	3	RT	10.1	1.9	15.0
0.17	45	3	LT	10.1	1.9	15.0
0.22	45	3	RT	10.1	1.9	15.0
0.22	45	3	LT	10.1	1.9	15.0
0.27	45	3	RT	10.1	1.9	15.0
0.27	45	3	LT	10.1	1.9	15.0
0.33	45	3	RT	10.1	1.9	15.0
0.33	45	3	LT	10.1	1.9	15.0
0.39	55	3	RT	12.4	2.3	18.3
0.39	55	3	LT	12.4	2.3	18.3
0.44	45	3	RT	10.1	1.9	15.0
0.44	60	3	LT	13.5	2.5	20.0
0.53	45	3	LT	10.1	1.9	15.0
0.55	50	3	RT	11.3	2.1	16.7
0.71	25	3	RT	5.6	1.1	8.3
1.39	65	3	LT	14.6	2.7	21.7
2.33	45	3	RT	10.1	1.9	15.0
2.33	85	3	LT	19.1	3.6	28.3
3.33	55	3	LT	12.4	2.3	18.3
3.40	55	3	RT	12.4	2.3	18.3
3.41	45	3	LT	10.1	1.9	15.0
5.28	85	3	RT	19.1	3.6	28.3
5.34	75	3	LT	16.9	3.2	25.0
TOTAL:				313	58	464

PAVEMENT PATCHING 13 INCH SCHEDULE						
LOCATION	LANE	LENGTH	LANE WIDTH	PAVEMENT PATCHING TYPE II	PAVEMENT PATCHING TYPE III	PAVEMENT PATCHING TYPE IV
	(SB/NB)	(FOOT)	(FOOT)	(SQYD)	(SQYD)	(SQYD)
IL 153						
0.263	SB	6.0	13.0	8.7		
0.263	NB	6.0	13.0	8.7		
0.940	SB	6.0	13.0	8.7		
0.940	NB	6.0	13.0	8.7		
1.200	SB	20.0	13.0			28.9
1.200	NB	20.0	13.0			28.9
4.062	NB	15.0	13.0		21.7	
4.274	SB	25.0	13.0			36.1
4.274	NB	25.0	13.0			36.1
4.402	SB	4.0	13.0	5.8		
4.402	NB	4.0	13.0	5.8		
4.557	SB	6.0	13.0	8.7		
4.557	NB	6.0	13.0	8.7		
4.598	SB	6.0	13.0	8.7		
4.598	NB	6.0	13.0	8.7		
4.661	NB	15.0	13.0		21.7	
Y - WEST						
5.546	SB	30.0	13.0			43.3
5.561	SB	6.0	13.0	8.7		
5.561	NB	6.0	13.0	8.7		
Y - EAST						
5.580	NB	6.0	23.0		15.3	
5.690	SB	6.0	13.0	8.7		
5.690	NB	6.0	13.0	8.7		
5.702	SB	25.0	13.0			36.1
5.719	SB	20.0	12.0			26.7
SUBTOTAL:				115.6	58.7	236.1
ANTICIPATED FAILURES (50%):				57.8	29.3	118.1
TOTAL:				173	88	354

TEMPORARY RAMPS				
STA	LOCATION	W	L	(SQ YD)
IL 153				
0.00	MAINLINE	110	7	86
0.06	SIDEROAD RT	50	4	22
0.06	SIDEROAD LT	50	4	22
0.12	SIDEROAD RT	45	4	20
0.12	SIDEROAD LT	45	4	20
0.17	SIDEROAD RT	45	4	20
0.17	SIDEROAD LT	45	4	20
0.22	SIDEROAD RT	45	4	20
0.22	SIDEROAD LT	45	4	20
0.27	SIDEROAD RT	45	4	20
0.27	SIDEROAD LT	45	4	20
0.33	SIDEROAD RT	45	4	20
0.33	SIDEROAD LT	45	4	20
0.39	SIDEROAD RT	55	4	24
0.39	SIDEROAD LT	55	4	24
0.44	SIDEROAD RT	45	4	20
0.44	SIDEROAD LT	60	4	27
0.53	SIDEROAD LT	45	4	20
0.55	SIDEROAD RT	50	4	22
0.71	SIDEROAD RT	25	4	11
1.39	SIDEROAD RT	85	4	38
1.39	SIDEROAD LT	70	4	31
2.33	SIDEROAD RT	50	4	22
2.33	SIDEROAD LT	90	4	40
3.33	SIDEROAD LT	60	4	27
3.40	SIDEROAD RT	60	4	27
3.41	SIDEROAD LT	50	4	22
5.28	SIDEROAD RT	90	4	40
5.34	SIDEROAD LT	80	4	36
Y-WEST				
5.81	MAINLINE	170	7	132
Y-EAST				
5.719	MAINLINE	100	7	78
TOTAL:				971

ADA RAMPS						
LOCATION	SIDEWALK REMOVAL	CURB & GUTTER REMOVAL	DETECTABLE WARNINGS	PCC SIDEWALK 4"	CCC&G TYPE B-6.12	REMOVE AND RESET ORNAMENTAL FENCE
	(SQFT)	(SQFT)	(SQFT)	(SQFT)	(FOOT)	(FOOT)
IL 153 AT IL 3						
QUAD #1	218	17	17	229	17	50
QUAD #2	77	16	18	68	16	
IL 153 AT LOCUST ST						
QUAD #1	124	11	16	127	11	
QUAD #2	44	6	10	52	6	
QUAD #3	207	10	16	242	10	
QUAD #4	34	6	10	45	6	
IL 153 AT KING ST						
QUAD #1	91	12	20	111	12	
QUAD #1	22	6	10	29	6	
TOTAL:	817	84	117	903	84	50

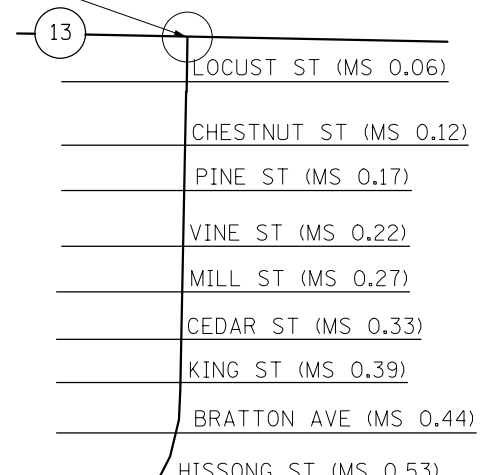
RIGHT-OF-WAY AND PROPERTY CORNERS			
LOCATION	OFFSET	LT/RT	ROW AND PROPERTY CORNERS
IL 153 - STA			(EACH)
328+77.05	30.30'	LT	1
345+75.83	31.79'	LT	1
346+35.83	29.86'	LT	1
348+65.04	30.11'	LT	1
348+75.04	30.12'	LT	1
348+75.31	39.92'	RT	1
TOTAL:			6

PAVEMENT MARKING SCHEDULE

LOCATION			THERMOPLASTIC AND TEMPORARY PAVEMENT MARKING					SHORT-TERM PAVEMENT MARKING		SHORT-TERM PAVEMENT MARKING REMOVAL (1 LIFT)	TEMPORARY PAVEMENT MARKING REMOVAL (1 LIFT)	
			LINE, 4" SOLID (WHITE)	LINE, 4" SKIP-DASH (YELLOW)	LINE, 4" NB NO PASS (YELLOW)	LINE, 4" SB NO PASS (YELLOW)	LINE, 12" SOLID (WHITE)	LINE, 24" SOLID (WHITE)	WHITE PAVEMENT MARKING (2 LIFTS)			YELLOW PAVEMENT MARKING (2 LIFTS)
STA	TO	STA	FOOT	FOOT	FOOT	FOOT	FOOT	SQ FT	FOOT	FOOT	SQ FT	SQ FT
IL 153												
0.00	TO	0.308	2751	407			115	24	359	74	72	1216
0.308	TO	0.415	916	141		565			73	128	34	541
0.415	TO	0.518	952		544	544			76	198	46	680
0.518	TO	0.618	944	132	528				76	120	33	535
0.618	TO	2.436	18885	2400					1511	436	325	7095
2.436	TO	2.539	1120	136		544			90	124	36	600
2.539	TO	2.661	1296	161					104	29	22	486
2.661	TO	2.760	1044	131	523				84	119	34	566
2.760	TO	3.544	8104	1035					648	188	139	3046
3.544	TO	3.732	1984	248		993			159	226	64	1075
3.732	TO	3.846	1208		602	602			97	219	53	804
3.846	TO	4.047	2120	265	1061				170	241	68	1149
4.047	TO	4.310	2778	347					222	63	48	1042
4.310	TO	4.556	422	325		1299			34	295	55	682
4.556	TO	4.585	300	38					24	7	5	113
4.585	TO	4.745	1690	211	845				135	192	55	915
4.745	TO	5.303	5900	737					472	134	101	2212
5.303	TO	5.443	1334	185		739			107	168	46	753
5.443	TO	5.527	888	111					71	20	15	333
5.527	TO	5.590	660	83	333				53	76	21	359
Y - WEST												
5.590	TO	5.669	834	104	417				67	95	27	452
5.669	TO	5.810	1490	186				12	131	34	28	583
Y - EAST												
5.590	TO	5.719	1360	170				12	121	31	25	534
SUBTOTAL:			58980	7553	4852	5285	115	48	4881	3216	1350	25768
TOTAL:			76671				115	48	8098		1350	25768

BEGIN PROJECT MILE STA. 0.00
(SEE DETAIL A)

COULTERVILLE

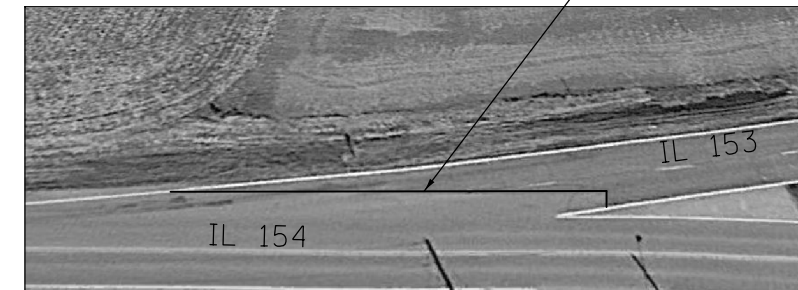


BEGIN PROJECT MI STA 0.00
AT CONSTRUCTION JOINT



DETAIL A

END Y-WEST MI STA 5.81
AT CONSTRUCTION JOINT



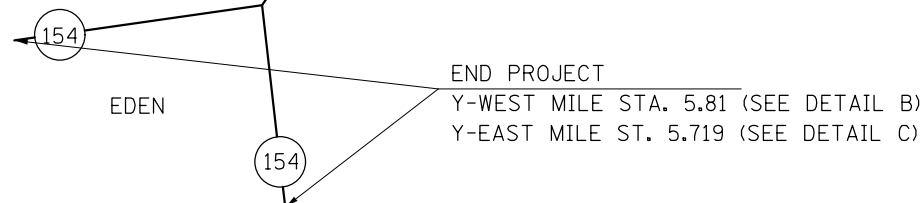
DETAIL B

END Y-EAST MI STA 5.719
AT CONSTRUCTION JOINT



DETAIL C

LOCATION MAP
NOT TO SCALE



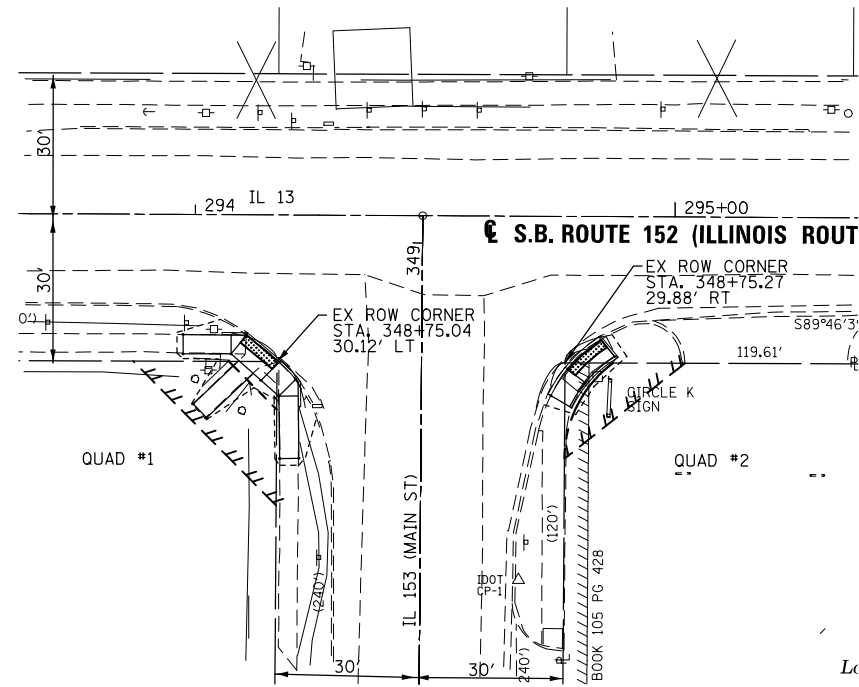
FILE NAME =	USER NAME = Burnsideem	DESIGNED -	REVISED -
pw:\IL\084EBIDINTEG\illinois.gov\PWIDOT\Documents\IDOT Offices\District 8\Projects\0876\Drawings\LEADsheets\0876J18-sht-pland		DRAWN -	REVISED -
Default	PLOT SCALE = 100.0000' / 1in.	CHECKED -	REVISED -
	PLOT DATE = 5/11/2017	DATE -	REVISED -

STATE OF ILLINOIS
DEPARTMENT OF TRANSPORTATION

LOCATION MAP

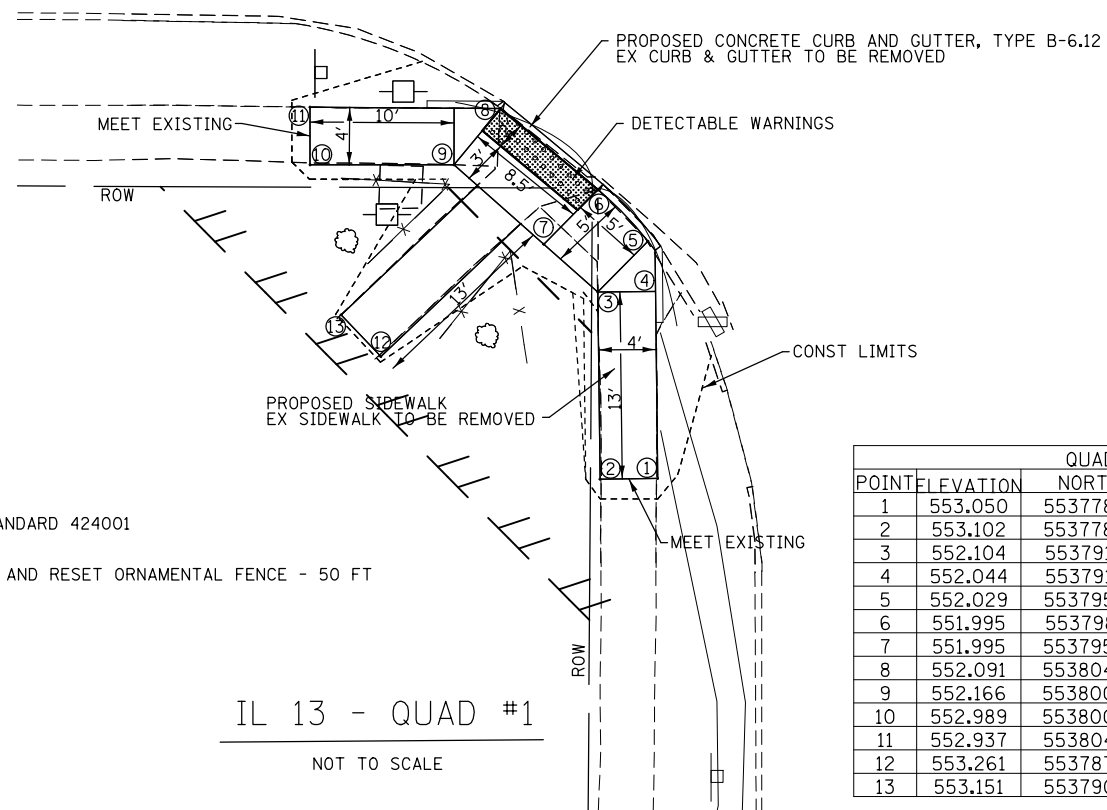
SCALE: SHEET OF SHEETS STA. TO STA.

F.A.S. RTE.	SECTION	COUNTY	TOTAL SHEETS	SHEET NO.
1835	113RS-3	RANDOLPH	24	13
CONTRACT NO. 76J18				
ILLINOIS FED. AID PROJECT				



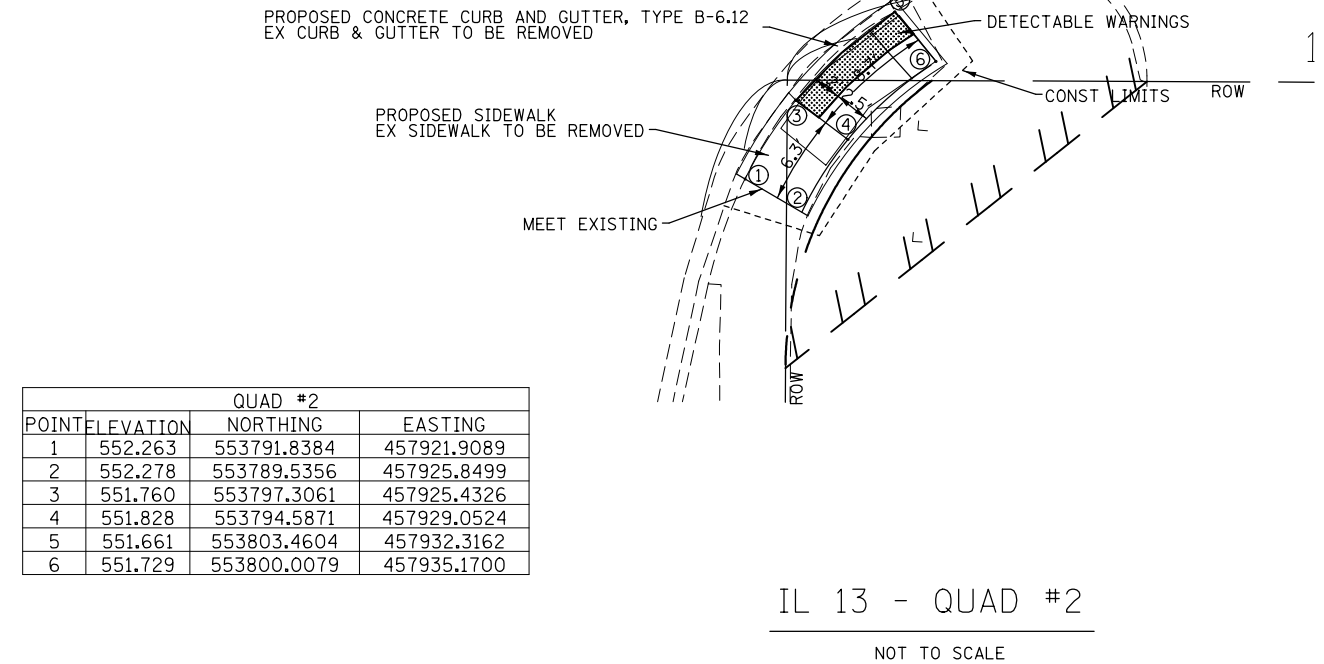
NOTE: ALL SURPLUS EXCAVATION MUST REMAIN ON THE PROJECT SITE. THE CONTRACTOR SHALL GRADE THE DISPOSED EXCAVATION TO THE SATISFACTION OF THE ENGINEER AND THE AREA MUST BE SEEDED CLASS 2A, FERTILIZED AND MULCHED ACCORDING TO SECTION 202, 205, 250 AND 251 OF THE STANDARD SPECIFICATIONS. THIS WORK SHALL BE INCLUDED IN THE COST PER SQUARE FOOT FOR THE PAY ITEM PORTLAND CEMENT CONCRETE SIDEWALK, 4 INCH.

NOT TO SCALE



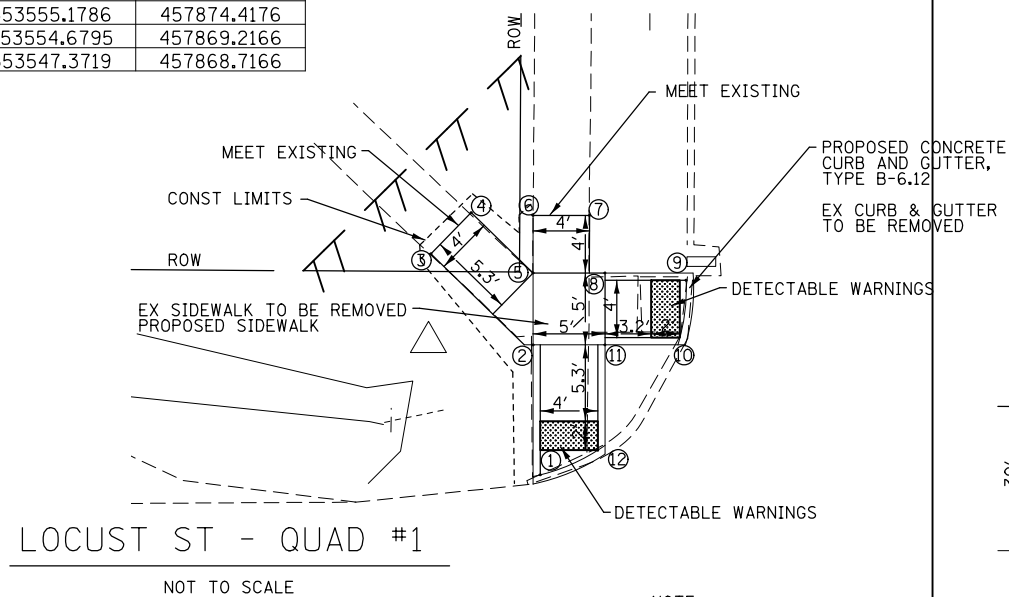
QUAD #1			
POINT	ELEVATION	NORTHING	EASTING
1	553.050	553778.7834	457869.3787
2	553.102	553778.7365	457865.379
3	552.104	553791.7356	457865.2243
4	552.044	553791.7825	457869.2264
5	552.029	553795.2597	457868.7024
6	551.995	553798.8551	457865.2259
7	551.995	553795.0535	457861.4738
8	552.091	553804.4840	457858.4694
9	552.166	553800.5698	457855.2381
10	552.989	553800.5698	457845.2381
11	552.937	553804.5794	457845.2381
12	553.261	553787.2493	457850.1509
13	553.151	553790.1500	457847.3966

NOTE:
USE STANDARD 424001



QUAD #2			
POINT	ELEVATION	NORTHING	EASTING
1	552.263	553791.8384	457921.9089
2	552.278	553789.5356	457925.8499
3	551.760	553797.3061	457925.4326
4	551.828	553794.5871	457929.0524
5	551.661	553803.4604	457932.3162
6	551.729	553800.0079	457935.1700

QUAD #1			
POINT	ELEVATION	NORTHING	EASTING
1	556.520	553545.6541	457864.7158
2	556.170	553554.6783	457864.2159
3	556.637	553561.0035	457857.1282
4	556.600	553563.8674	457859.9207
5	556.245	553559.6786	457864.2166
6	556.490	553563.6786	457864.2166
7	556.461	553563.6786	457868.1387
8	556.170	553559.6786	457869.2166
9	555.702	553559.1738	457874.8537
10	555.679	553555.1786	457874.4176
11	556.095	553554.6795	457869.2166
12	556.340	553547.3719	457868.7166

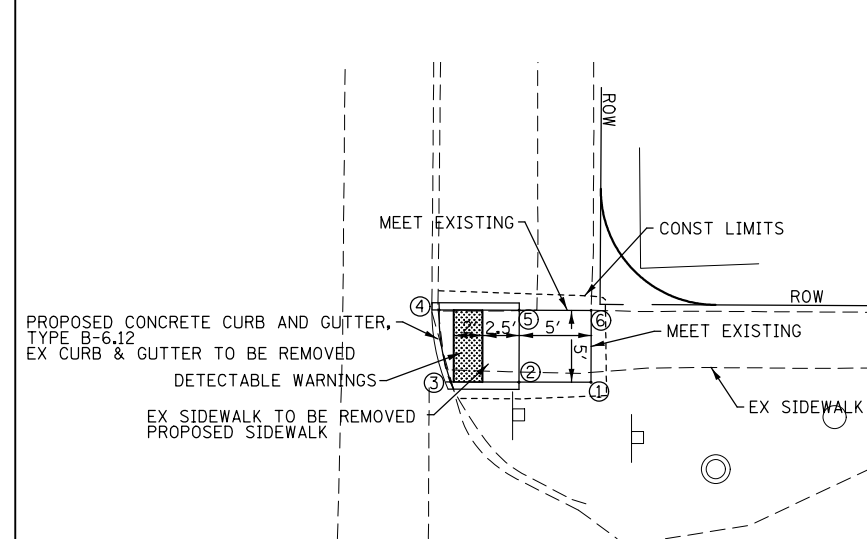


LOCUST ST - QUAD #1

NOT TO SCALE

NOTE:
USE STANDARD 424001

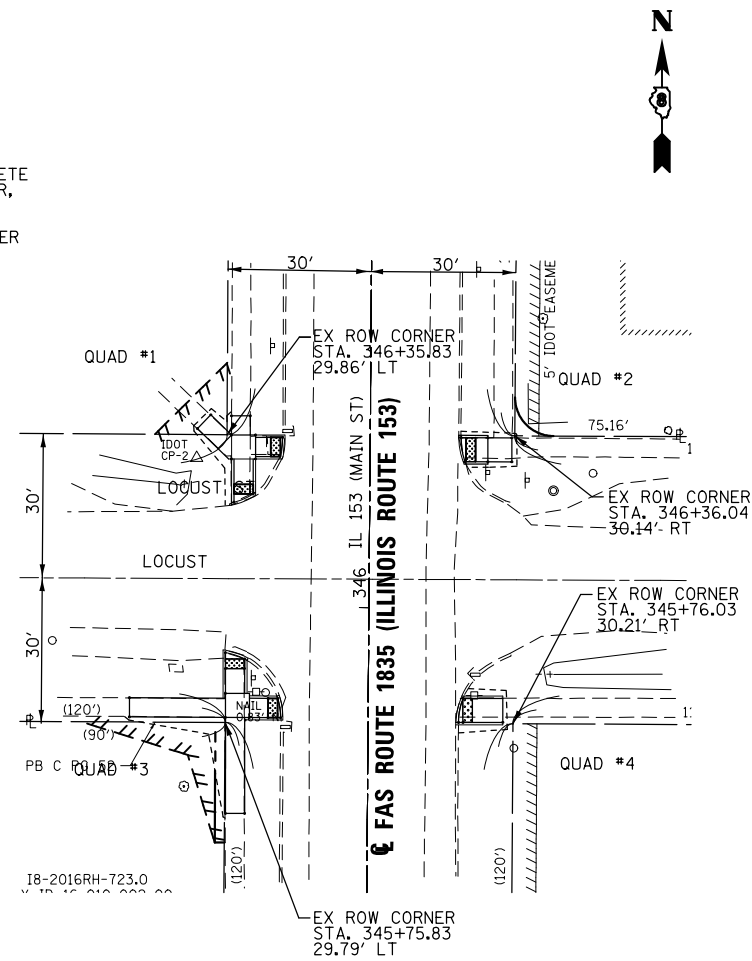
QUAD #2			
POINT	ELEVATION	NORTHING	EASTING
1	555.570	553554.0715	457922.6372
2	555.670	553554.0836	457917.6372
3	555.602	553554.0945	457912.9075
4	555.636	553559.0956	457912.0907
5	555.728	553559.0845	457917.6499
6	555.634	553559.0715	457922.6493



LOCUST ST - QUAD #2

NOT TO SCALE

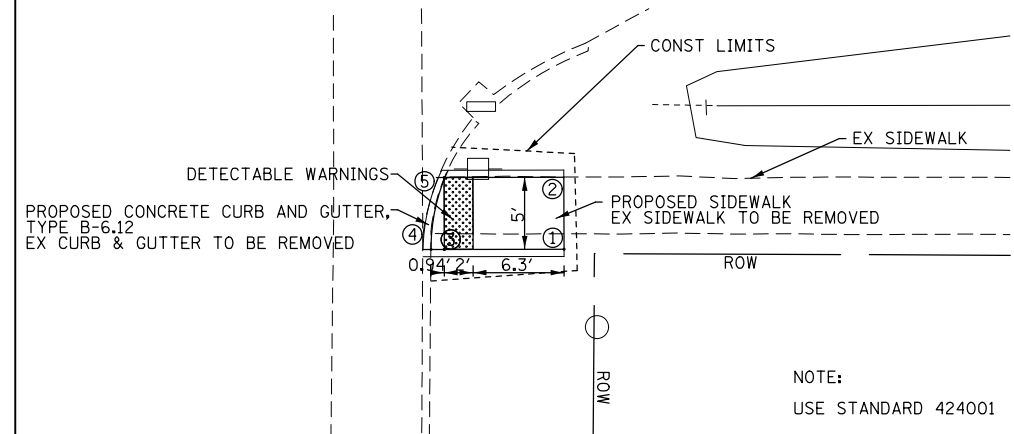
NOTE:
USE STANDARD 424001



NOT TO SCALE

NOTE: ALL SURPLUS EXCAVATION MUST REMAIN ON THE PROJECT SITE. THE CONTRACTOR SHALL GRADE THE DISPOSED EXCAVATION TO THE SATISFACTION OF THE ENGINEER AND THE AREA MUST BE SEEDED CLASS 2A, FERTILIZED AND MULCHED ACCORDING TO SECTION 202, 205, 250 AND 251 OF THE STANDARD SPECIFICATIONS. THIS WORK SHALL BE INCLUDED IN THE COST PER SQUARE FOOT FOR THE PAY ITEM PORTLAND CEMENT CONCRETE SIDEWALK, 4 INCH.

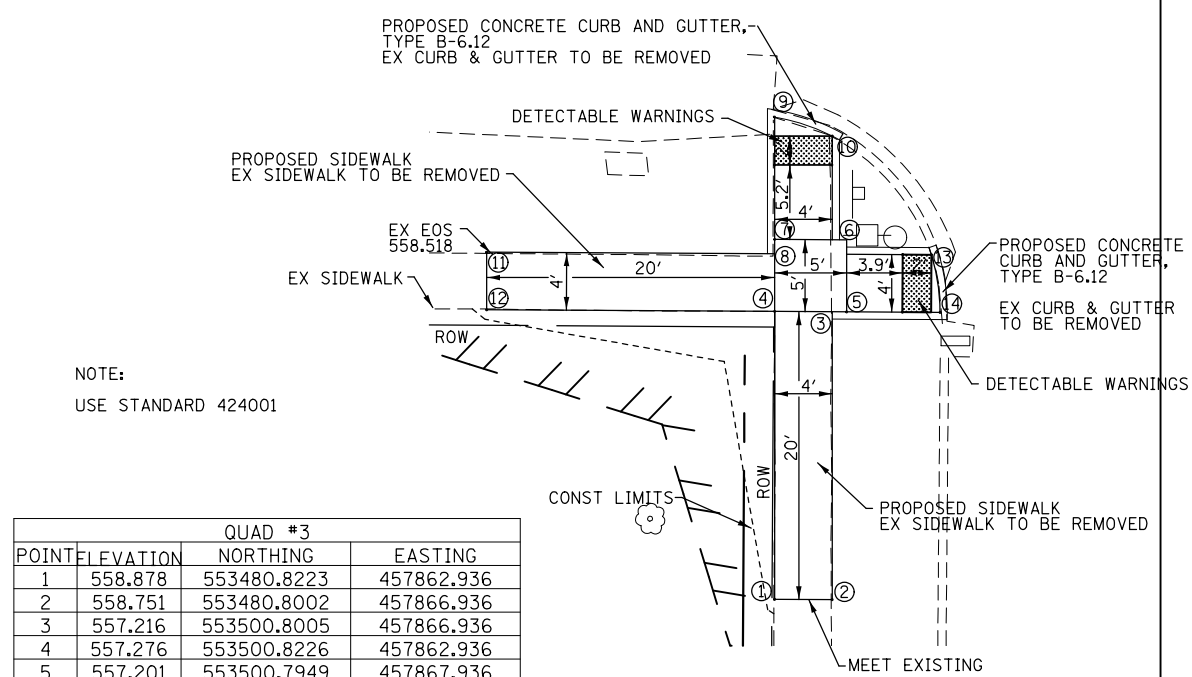
QUAD #4			
POINT	ELEVATION	NORTHING	EASTING
1	556.971	553499.7872	457920.7619
2	556.959	553504.7873	457920.7426
3	556.610	553499.7747	457912.4408
4	556.596	553499.7733	457911.53
5	556.547	553504.7747	457912.4333



LOCUST ST - QUAD #4

NOT TO SCALE

NOTE:
USE STANDARD 424001



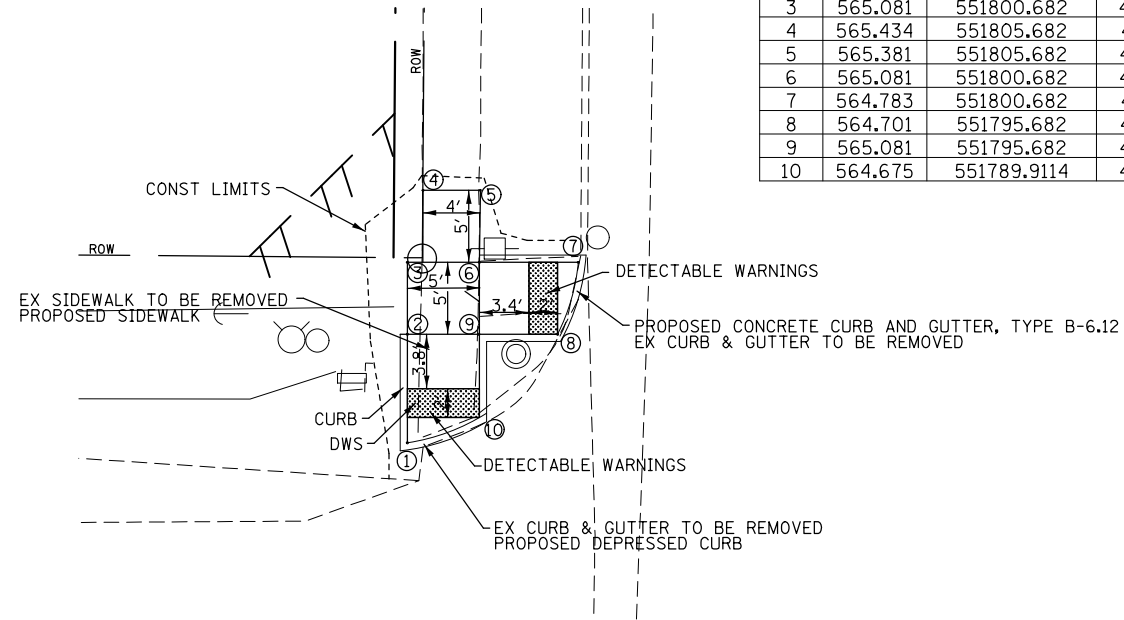
LOCUST ST - QUAD #3

NOT TO SCALE

NOTE:
USE STANDARD 424001

QUAD #3			
POINT	ELEVATION	NORTHING	EASTING
1	558.878	553480.8223	457862.936
2	558.751	553480.8002	457866.936
3	557.216	553500.8005	457866.936
4	557.276	553500.8226	457862.936
5	557.201	553500.7949	457867.936
6	557.116	553505.795	457867.936
7	557.176	553505.8227	457862.936
8	557.206	553504.8227	457862.936
9	556.982	553514.3204	457862.936
10	556.815	553513.0021	457866.9484
11	558.518	553504.9332	457842.936
12	558.677	553500.9332	457872.4317

QUAD #4			
POINT	ELEVATION	NORTHING	EASTING
1	564.59	551788.151	457850.3236
2	565.081	551795.6876	457850.3236
3	565.081	551800.682	457850.3236
4	565.434	551805.682	457851.3933
5	565.381	551805.682	457855.3933
6	565.081	551800.682	457855.3236
7	564.783	551800.682	457862.1982
8	564.701	551795.682	457860.7615
9	565.081	551795.682	457855.2922
10	564.675	551789.9114	457855.3236

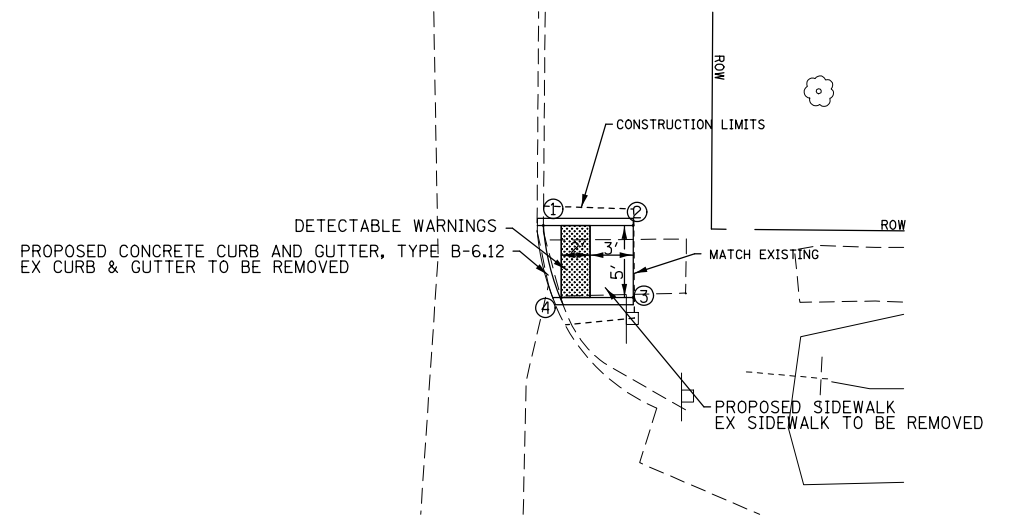


KING ST - QUAD #1

NOT TO SCALE

NOTE:
USE STANDARD 424001

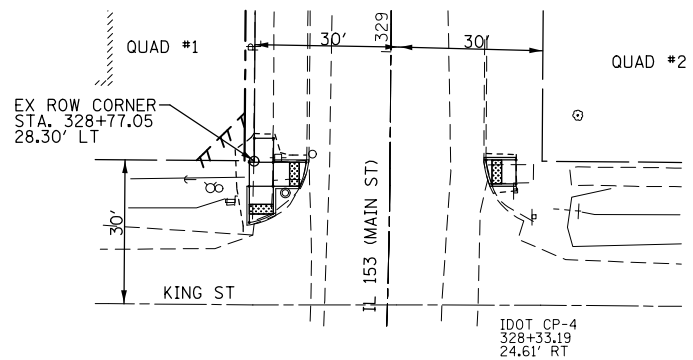
QUAD #2			
POINT	ELEVATION	NORTHING	EASTING
1	565.011	551801.1821	457899.6921
2	565.077	551801.1821	457905.9332
3	564.989	551796.1821	457905.9332
4	564.969	551796.1821	457900.9447



KING ST - QUAD #2

NOT TO SCALE

NOTE:
USE STANDARD 424001



NOT TO SCALE

NOTE: ALL SURPLUS EXCAVATION MUST REMAIN ON THE PROJECT SITE. THE CONTRACTOR SHALL GRADE THE DISPOSED EXCAVATION TO THE SATISFACTION OF THE ENGINEER AND THE AREA MUST BE SEEDED CLASS 2A, FERTILIZED AND MULCHED ACCORDING TO SECTION 202, 205, 250 AND 251 OF THE STANDARD SPECIFICATIONS. THIS WORK SHALL BE INCLUDED IN THE COST PER SQUARE FOOT FOR THE PAY ITEM PORTLAND CEMENT CONCRETE SIDEWALK, 4 INCH.

FILE NAME =	USER NAME = Burnsideem	DESIGNED -	REVISED -	STATE OF ILLINOIS DEPARTMENT OF TRANSPORTATION	ADA SIDEWALK PLAN IL 153 AND KING ST				F.A.S. RTE.	SECTION	COUNTY	TOTAL SHEETS	SHEET NO.
pw:\IL\084EBIDINTEG\illinois.gov\PIDOT\Documents\IDOT Offices\District 8\Projects\0875\Drawings\AD\Sheets\0875-118-sht-misc.dwg	PLotted SCALE = 40.0000' / in.	CHECKED -	REVISED -						1835	113RS-3	RANDOLPH	24	16
Default	PLOT DATE = 6/26/2017	DATE -	REVISED -		SCALE: SHEET OF SHEETS STA. TO STA.				CONTRACT NO. 76J18				
												ILLINOIS FED. AID PROJECT	

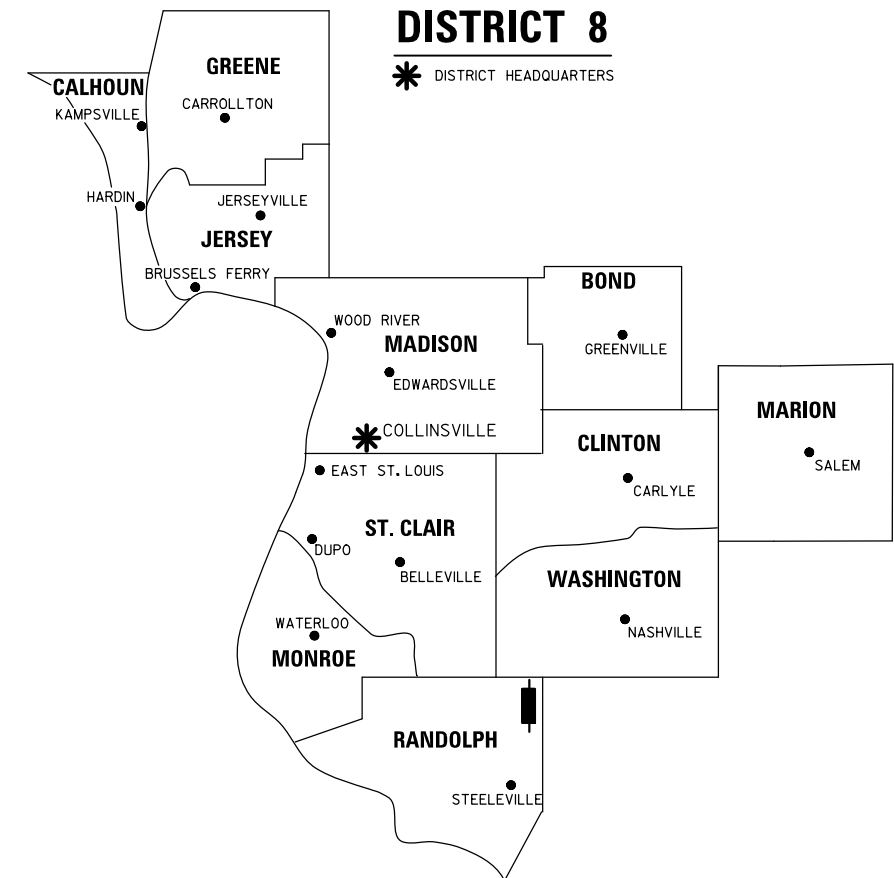
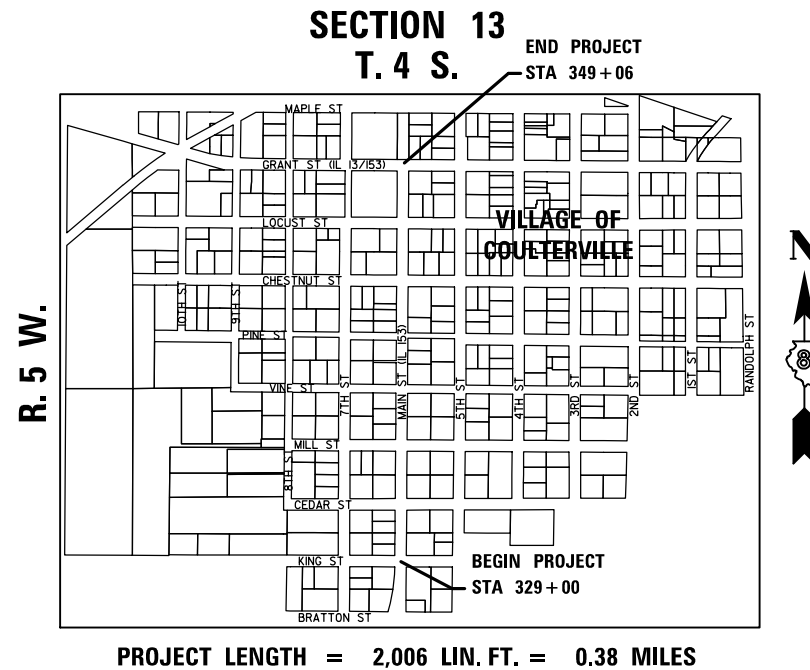
SHEET INDEX		
SHEET NO.	STATION TO STATION	DESCRIPTION
1		COVER SHEET
2		LEGEND, NOTES & ABBREVIATIONS
3	328+75 TO 331+00 (LT)	PARCEL 8707021
4	343+00 TO 346+00 (LT)	PARCEL 8707022
5	346+00 TO 349+06 (LT)	PARCEL 8707023
6	346+00 TO 349+06 (RT)	PARCELS 8707024 & 8707025
7		CENTERLINE & CONTROL TIES

STATE OF ILLINOIS
DEPARTMENT OF TRANSPORTATION
DIVISION OF HIGHWAYS

PLAT OF HIGHWAYS

FAS ROUTE 1835 (IL 153)
SECTION 113RS-3
RANDOLPH COUNTY
JOB NO. R-98-007-17

SPACE RESERVED FOR RECORDING OFFICER



PREPARED BY:

VOLKERT

1101 EASTPORT PLAZA DRIVE
SUITE 100
COLLINSVILLE, IL 62234
618.345.8918
IL DESIGN FIRM # 184.004027



TRAVIS J. NIEDERHOFER
PLS NUMBER 035.003849
LICENSE EXPIRES 11/30/2018

SHEET 1 OF 7

ILLINOIS DEPARTMENT OF TRANSPORTATION DIVISION OF HIGHWAYS/REGION 5/DISTRICT 8 1102 EASTPORT PLAZA DRIVE COLLINSVILLE, ILLINOIS 62234-6198				
F.A.S. RTE.	SECTION	COUNTY	TOTAL SHEETS	SHEET NO.
1835	113RS-3	RANDOLPH	24	17
CONTRACT NO. 76J18				
FED. ROAD DIST. NO.		ILLINOIS FED. AID PROJECT		

LEGEND FOR EXISTING TOPOGRAPHIC SYMBOLS

TRAFFIC SIGNAL GULFBOX	○	DRAINAGE FLOW LINE	
TRAFFIC SIGNAL HANDHOLE	⊠	RIP RAP	
TRAFFIC SIGNAL SIGNAL POST	○	HEADWALL	
TRAFFIC SIGNAL STEEL MAST ARM		CULVERT END SECTION	
TRAFFIC SIGNAL PEDESTRIAN PUSH BUTTON	●	DRAINAGE MANHOLE	⊙
TRAFFIC SIGNAL WOODEN POLE	⊙	INLET	⊙
TRAFFIC SIGNAL VEHICLE DETECTION PRIORITY	⊠	ROADWAY DITCH FLOW	
TRAFFIC SIGNAL VEHICLE DETECTION MAGNET	⊠	VEGETATION LINE	
TRAFFIC SIGNAL JUNCTION BOX	⊠	STUMP	
TRAFFIC SIGNAL CONTROLLER	⊠	SHRUB	⊙
TRAFFIC SIGNAL HEAVY DUTY HANDHOLE	⊠	EVERGREEN TREE	
RAILROAD CANTILEVER MAST ARM		DECIDUOUS TREE	
RAILROAD CROSSBUCK		WOODS/BUSH LINE	
RAILROAD TRACK		TRAFFIC SIGN	
RAILROAD TRACK (ABANDONED)		GUARDRAIL POST	
RAILROAD CROSSGATE		GUARDRAIL	
RAILROAD CONTROL BOX		FIELD LINE	
RAILROAD FLASHING SIGNAL		LEVEE/NOISE BARRIER	
UTILITY TELEPHONE SPLICE BOX	⊠	FENCE	
UTILITY POWER POLE	⊠	MAIL BOX	
UTILITY TRAFFIC SIGNAL	⊠	ADVERTISING SIGN	
UTILITY LIGHT POLE	⊠	MARSH	
UTILITY FIRE HYDRANT	⊠	LIGHTING HANDHOLE	
UTILITY MANHOLE	⊠	LIGHTING POWER POLE	
UTILITY TELEPHONE POLE	⊠	LIGHTING JUNCTION BOX	
UTILITY GUY ANCHOR	⊠	LIGHTING HEAVYDUTY HANDHOLE	
UTILITY PIPELINE WARNING SIGN	⊠	LIGHTING CONTROLLER	
UTILITY HANDHOLE	⊠	LIGHTING PULL POINT	
UTILITY SPLICE BOX	⊠	HIGHWAY LIGHTING ELECTRICAL GROUND	
UTILITY JUNCTION BOX	⊠	HIGHWAY LIGHTING SINGLE UNIT	
UTILITY HEAVY DUTY HANDHOLE	⊠	HIGHWAY LIGHTING DOUBLE UNIT	
UTILITY DOUBLE HANDHOLE	⊠	EXISTING CONCRETE BARRIER	
UTILITY CONTROLLER	⊠	EXISTING CREEK OR DITCH	
UTILITY WATER METER	⊠	EXISTING EDGE OF PAVEMENT	

RIGHT-OF-WAY LEGEND

	QUARTER SECTION CORNERS
	SECTION CORNERS
	EXISTING CENTERLINE
	EXISTING RIGHT-OF-WAY LINE
	FORMER RIGHT-OF-WAY LINE
	EXISTING IDOT EASEMENT LINE
	EXISTING EASEMENT LINE
	BUILDING SETBACK LINE
	EXISTING ACCESS CONTROL LINE
	EXISTING RIGHT-OF-WAY & PROPOSED ACCESS CONTROL LINE
	PROPOSED ACCESS CONTROL LINE
	PROPOSED CENTERLINE
	PROPOSED RIGHT-OF-WAY LINE
	PROPOSED TEMPORARY EASEMENT LINE
	PROPOSED PERMANENT EASEMENT LINE
	SECTION LINE
	QUARTER SECTION LINE
	QUARTER QUARTER SECTION LINE
	PROPERTY LINE (TITLE)
	RECORDED PLAT/DEED LINE
	APPARENT PROPERTY LINE
	SAME OWNERSHIP
	MEASURED DIMENSION
	RECORDED DIMENSION
	FOUND STONE
	FOUND IRON PIPE OR IRON ROD AT CORNER UNLESS OTHERWISE NOTED
	SET 5/8 INCH IRON ROD WITH PLASTIC CAP IDENTIFIED BY SURVEYORS LICENSE NUMBER AT CORNER UNLESS OTHERWISE NOTED
	PERMANENT SURVEY MONUMENT, I.D.O.T. STD. 667101 (TO BE SET BY OTHERS)
	SET 5/8 INCH IRON ROD AS SURVEY CONTROL UNLESS OTHERWISE NOTED
	FOUND CUT CROSS
	SET CUT CROSS

- STAKING OF PROPOSED RIGHT-OF-WAY AND PERMANENT EASEMENT CORNERS, SET 5/8 INCH METAL ROD WITH DIVISION OF HIGHWAY SURVEY ALUMINUM CAP TO MONUMENT THE POSITION SHOWN, IDENTIFIED BY INSCRIPTION DATA AND SURVEYORS LICENSE NUMBER.
- ^B STAKING OF PROPOSED RIGHT-OF-WAY AND PERMANENT EASEMENT CORNERS IN CULTIVATED AREA, A MINIMUM OF 20 INCHES BELOW THE GROUND SURFACE. SET 5/8 INCH METAL ROD WITH DIVISION OF HIGHWAY SURVEY ALUMINUM CAP TO MONUMENT THE POSITION SHOWN, IDENTIFIED BY INSCRIPTION DATA AND SURVEYORS LICENSE NUMBER.

LEGEND FOR ABBREVIATIONS

A/C	ACCESS CONTROL
AC	ACRE
AKA	ALSO KNOWN AS
AVE	AVENUE
BK	BOOK
BLVD	BOULEVARD
CL	CENTERLINE
CAB	CABINET
CH	COUNTY HIGHWAY
Ch	CHAIN
CONC	CONCRETE
CP	CONTROL POINT
DB	DEED BOOK
E	EAST
ESMT	EASEMENT
EX	EXISTING
FA	FEDERAL AID
FAI	FEDERAL AID INTERSTATE
FAP	FEDERAL AID PRIMARY
FAS	FEDERAL AID SECONDARY
FAU	FEDERAL AID URBAN
FKA	FORMERLY KNOWN AS
FND	FOUND
ha	HECTARE
IP	IRON PIPE
IR	IRON ROD
LT	LEFT
m	METER
m ²	SQUARE METERS
N	NORTH
N/F	NOW OR FORMERLY
N & BC	NAIL AND BOTTLE CAP
N & C	NAIL AND CAP
N & W	NAIL AND WASHER
NE	NORTHEAST
NW	NORTHWEST
PB	PLAT BOOK
PG	PAGE
POB	POINT OF BEGINNING
POC	POINT OF COMMENCEMENT
POT	POINT ON TANGENT
PL	PROPERTY LINE
PR	PROPOSED
R	RANGE
RD	ROAD
REC	RECORD
ROW	RIGHT-OF-WAY
RR	RAILROAD
RRS	RAILROAD SPIKE
RT	RIGHT
RTE	ROUTE
S	SOUTH
SBI	STATE BOND ISSUE
SE	SOUTHEAST
SEC	SECTION
SQ FT	SQUARE FEET
SR	STATE ROUTE
ST	STREET
STA	STATION
SMK	SURVEY MARKER
SW	SOUTHWEST
T	TOWNSHIP
TE	TEMPORARY EASEMENT
TELE	TELEPHONE
USGS	U.S. GEOLOGICAL SURVEY
W	WEST

SPACE RESERVED FOR RECORDING OFFICER

PROPOSED PARCEL NUMBER LEGEND

8001001	PROPOSED FEE SIMPLE ACQUISITION
8001001PE	PROPOSED PERMANENT EASEMENT
8001001TE	PROPOSED TEMPORARY EASEMENT
8001001DED	PROPOSED DEDICATION
8001001AC	PROPOSED ACCESS CONTROL LINE

CURVE ABBREVIATIONS

PC	POINT OF CURVATURE
PI	POINT OF INTERSECTION
PT	POINT OF TANGENCY
PRC	POINT OF REVERSE CURVE
PCC	POINT OF COMPOUND CURVE
CB	CHORD BEARING
R	RADIUS OF CURVE
L	LENGTH OF CURVE
CB	CHORD BEARING
C	CHORD LENGTH
D	DEGREE OF CURVE
E	EXTERNAL ORDINATE
Δ	CENTRAL ANGLE

PREPARED BY:

VOLKERT

1101 EASTPORT PLAZA DRIVE
SUITE 100
COLLINSVILLE, IL 62234
618.345.8918
IL DESIGN FIRM # 184.004027



TRAVIS J. NIEDERHOFER
PLS NUMBER 035.003849
LICENSE EXPIRES 11/30/2018

TOTAL HOLDING AREA SOURCE TABLE

1	AREA ACCORDING TO THE SURVEY PERFORMED BY THE CONSULTANT.
2	AREA LISTED IN RECORDED DEED.
3	AREA ACCORDING TO A RECORDED SUBDIVISION PLAT.
4	AREA ACCORDING TO A PLAT OF SURVEY.
5	AREA CALCULATED FROM RECORDED DEEDS OR TITLE COMMITMENTS - NOT SURVEYED.
6	AREA ACCORDING TO COUNTY TAX MAPS AND COUNTY ASSESSMENT RECORDS.
7	AREA ACCORDING TO OTHER RECORDS, SEE NOTE ON THE PLAT OF HIGHWAYS.

TOPOGRAPHIC STATEMENT

THE TOPOGRAPHY SHOWN HEREON WAS PROVIDED TO THE SURVEYOR BY THE ILLINOIS DEPARTMENT OF TRANSPORTATION. THE SURVEYOR VISUALLY FIELD VERIFIED THE EXISTENCE OF THE TOPOGRAPHY SHOWN HEREON. IN ADDITION THE SURVEYOR PHYSICALLY LOCATED IN THE FIELD THE FOLLOWING ITEMS ON 12/27/2016:

- EXISTING EDGE OF PAVEMENT (IL 13 AND IL 153)
- HOUSES, GARAGES, BUILDINGS, SIGNS, ETC.

BASIS OF COORDINATE & BEARING STATEMENT

COORDINATES AND BEARINGS SHOWN HEREON ARE BASED ON SURVEY CONTROL DATA AS PROVIDED BY THE ILLINOIS DEPARTMENT OF TRANSPORTATION.

ILLINOIS DEPARTMENT OF TRANSPORTATION
PLAT OF HIGHWAYS
FAS ROUTE 1835 (IL 153)
SECTION 113RS-3
RANDOLPH COUNTY
JOB NO. R-98-007-17

SHEET 2 OF 7

ILLINOIS DEPARTMENT OF TRANSPORTATION DIVISION OF HIGHWAYS/REGION 5/DISTRICT 8 1102 EASTPORT PLAZA DRIVE COLLINSVILLE, ILLINOIS 62234-6198				
F.A.S. RTE.	SECTION	COUNTY	TOTAL SHEETS	SHEET NO.
1835	113RS-3	RANDOLPH	24	18
CONTRACT NO. 76J18				
FED. ROAD DIST. NO. ILLINOIS FED. AID PROJECT				

SEE SHEET 4

POT STA 343+00.00



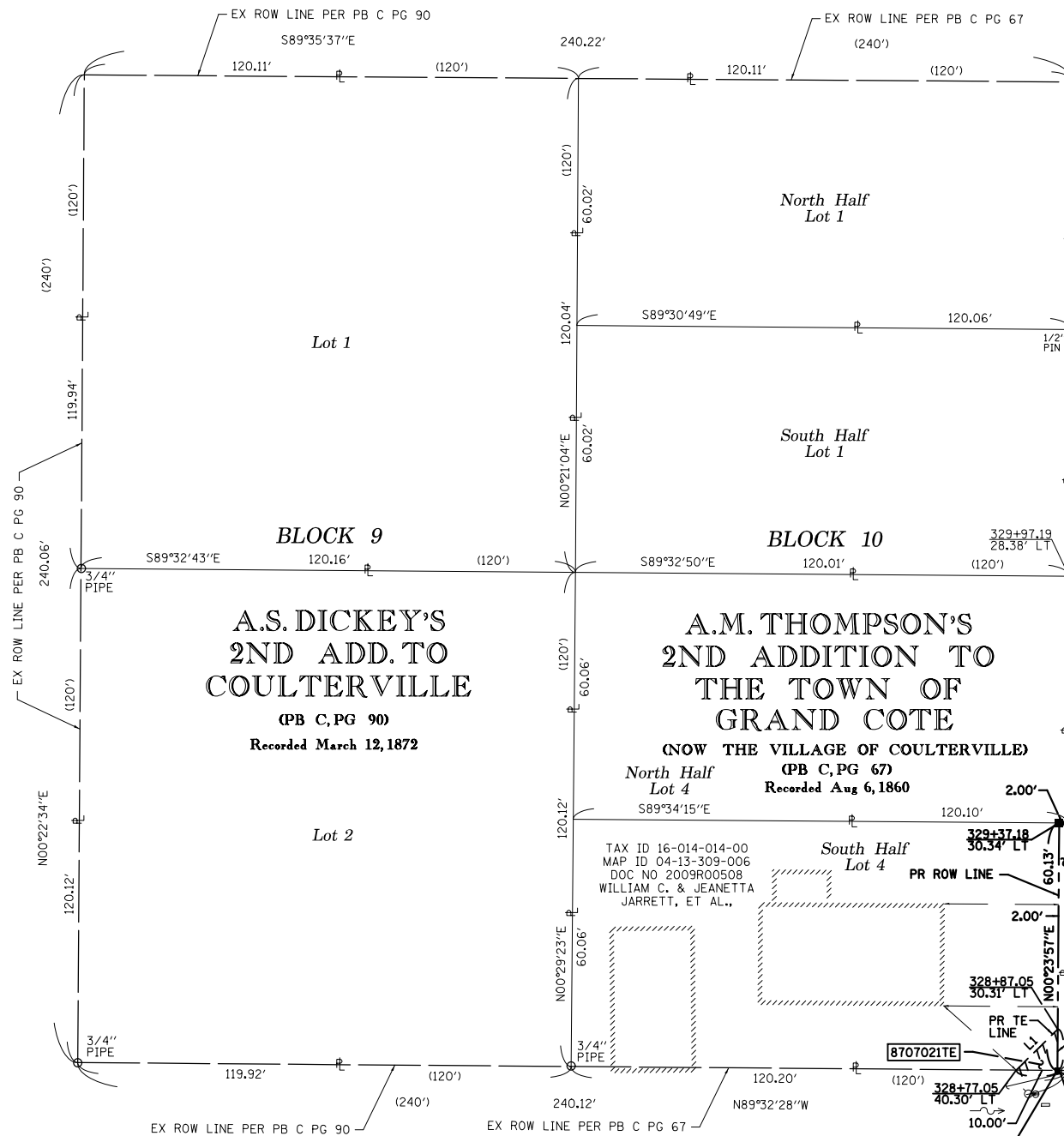
SPACE RESERVED FOR RECORDING OFFICER

SEE LEGENDS, TOPOGRAPHIC STATEMENT, SURVEYORS NOTE(S) AND BASIS OF COORDINATES & BEARINGS STATEMENT ON SHEET 2

STATION	OFFSET	COORDINATE TABLE		DESCRIPTION
		NORTH	EAST	
321+22.14	0.00'	551,090.7703	457,657.6800	P.C. & CURVE (MAG NAIL)
328+75.77	0.00'	551,799.4976	457,879.6546	P.T. & CURVE (MAG NAIL)
343+00.00	0.00'	553,223.6908	457,890.5551	P.O.T. (MAG NAIL)
328+33.19	24.61' RT	551,755.9251	457,903.2100	IDOT CP-4 (MAG NAIL)
328+77.05	28.30' LT	551,800.9992	457,851.3634	EX ROW (1/2" IRON PIN)
328+77.05	30.30' LT	551,801.0152	457,849.3635	PR ROW CORNER
328+77.05	40.30' LT	551,801.0953	457,839.3638	PR TE CORNER
328+87.05	30.31' LT	551,811.0150	457,849.4331	PR TE CORNER
329+37.18	28.34' LT	551,861.1243	457,851.7824	EX ROW (1/2" IRON PIN)
329+37.18	30.34' LT	551,861.1393	457,849.7824	PR ROW CORNER
329+97.19	28.38' LT	551,921.1376	457,852.2006	EX ROW
329+97.40	31.62' RT	551,920.8888	457,912.2003	EX ROW
331+75.79	13.69' RT	552,099.4084	457,895.6364	IDOT CP-3 (MAG NAIL)

LINE TABLE		
LINE	BEARING	DISTANCE
L1	N45°25'45"E	14.13'

SEVENTH STREET (60' WIDE)



EXISTING & OF PAVEMENT & PROPOSED CONSTRUCTION FAS ROUTE 1835 (ILLINOIS ROUTE 153)

MAIN STREET (AKA IL RTE 153) (60' WIDE)

A.M. THOMPSON'S 2ND ADDITION TO THE TOWN OF GRAND COTE (NOW THE VILLAGE OF COULTERVILLE) (PB C, PG 67) Recorded Aug 6, 1860

A.S. DICKEY'S 2ND ADD. TO COULTERVILLE (PB C, PG 90) Recorded March 12, 1872

A.M. THOMPSON'S 2ND ADDITION TO THE TOWN OF GRAND COTE (NOW THE VILLAGE OF COULTERVILLE) (PB C, PG 67) Recorded Aug 6, 1860

TAX ID 16-014-014-00
MAP ID 04-13-309-006
DOC NO 2009R00508
WILLIAM C. & JEANETTA JARRETT, ET AL.

EX CURVE EXIL153-1
PI STA = 325+10.35
Δ = 33° 54' 15" (LT) (34°00')
T = 388.21' (389.4')
L = 753.62' (755.6')
R = 1,273.57' (1,273.57')
C = 742.68'
CB = N17°23'26"E
PC STA = 321+22.14 (321+24.9)
PT STA = 328+75.77 (328+80.5)

STATE OF ILLINOIS)
COUNTY OF MADISON) SS

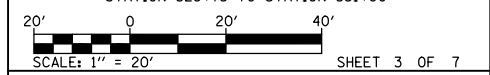
I, TRAVIS J. NIEDERHOFER, AN ILLINOIS PROFESSIONAL LAND SURVEYOR, STATE THAT I HAVE SURVEYED THE PLAT OF HIGHWAY SHOWN HEREON AND THAT THIS PROFESSIONAL SERVICE CONFORMS TO THE CURRENT ILLINOIS MINIMUM STANDARDS FOR A BOUNDARY SURVEY FOR THE PROPOSED PARCEL(S) TO BE ACQUIRED BY THE STATE OF ILLINOIS, DEPARTMENT OF TRANSPORTATION, SHOWN HEREON.

DATED _____
TRAVIS J. NIEDERHOFER, PLS NO. 035.003849
LICENSE EXPIRATION DATE: 11/30/2018



VOLKERT
1101 EASTPORT PLAZA DRIVE
SUITE 100
COLLINSVILLE, IL 62234
618.345.8918
IL DESIGN FIRM # 184.004027

ILLINOIS DEPARTMENT OF TRANSPORTATION
PLAT OF HIGHWAYS
FAS ROUTE 1835 (IL 153)
SECTION 113RS-3
RANDOLPH COUNTY
JOB NO. R-98-007-17
STATION 328+75 TO STATION 331+00



ILLINOIS DEPARTMENT OF TRANSPORTATION
DIVISION OF HIGHWAYS/REGION 5/DISTRICT 8
1102 EASTPORT PLAZA DRIVE
COLLINSVILLE, ILLINOIS 62234-6198

F.A.S. RTE.	SECTION	COUNTY	TOTAL SHEETS	SHEET NO.
1835	113RS-3	RANDOLPH	24	19

COMPLETION DATE OF FIELD WORK PERFORMED _____
LAND SURVEY: 12/30/2016 ROW STAKING: _____
CONTRACT NO. 76J18
FED. ROAD DIST. NO. _____ ILLINOIS FED. AID PROJECT _____

* SEE TOTAL HOLDING AREA SOURCE TABLE ON SHEET 2

PARCEL NO.	OWNER	TOTAL HOLDING ACRES	FEE SIMPLE ACQUISITION			EASEMENTS		PERMANENT TAX NUMBER	PROPERTY ACQUIRED BY
			ACRES	SQ FT	ACRES	PE = PERMANENT TE = TEMPORARY			
						EASEMENT PURPOSE	ACRES		
8707021	WILLIAM C. JARRETT AND JEANETTA JARRETT, AS TO A LIFE ESTATE, REMAINDER INTEREST IN CYNTHIA ANN TABING, A MARRIED PERSON, CHERYL JEAN HOOD, A SINGLE PERSON, WILLIAM CORDELL JARRETT, A MARRIED PERSON, ROBERT CHARLES JARRETT, A MARRIED PERSON, ALL AS TENANTS IN COMMON TITLE REPORT # 18-2016RH-720.0	0.1658	0.0028	120	0.1630	0.0011 TE	50 TE	CONSTRUCTION AND GRADING	16-014-014-00

SEE SHEET 5
**COULTER'S
 THIRD ADDITION
 TO THE TOWN
 OF GRAND COTE**
 (NOW THE VILLAGE OF COULTERVILLE)
 (PB B, PG 45)
 Recorded Feb 2, 1857

END PROJECT
 POT STA
 349+05.70



SPACE RESERVED FOR RECORDING OFFICER

BLOCK 17
 EX ROW LINE PER PB B PG 45

**LOCUST STREET
 (60' WIDE)**

SEE LEGENDS, TOPOGRAPHIC STATEMENT, SURVEYORS NOTE(S) AND
 BASIS OF COORDINATES & BEARINGS STATEMENT ON SHEET 2

COORDINATE TABLE				
STATION	OFFSET	NORTH	EAST	DESCRIPTION
328+75.77	0.00'	551,799.4976	457,879.6546	P.T. @ CURVE (MAG NAIL)
343+00.00	0.00'	553,223.6908	457,890.5551	P.O.T. (MAG NAIL)
349+05.70	0.00'	553,829.3730	457,895.1910	P.O.T. (MAG NAIL)
344+55.53	29.66' LT	553,379.4443	457,862.0854	EX ROW
344+55.80	30.34' RT	553,379.2571	457,922.0854	EX ROW
345+50.83	29.76' LT	553,474.7445	457,862.7112	PR ROW CORNER
345+50.83	31.76' LT	553,474.7576	457,860.7112	PR ROW CORNER
345+69.00	37.50' LT	553,492.9699	457,855.1151	PR TE CORNER
345+75.83	29.79' LT	553,499.7440	457,862.8753	EX ROW
345+75.83	31.79' LT	553,499.7559	457,860.8754	PR ROW CORNER
345+75.78	59.79' LT	553,499.9238	457,832.8759	PR TE CORNER
345+76.03	30.21' RT	553,499.4865	457,922.8749	EX ROW
346+30.91	36.13' LT	553,554.8658	457,856.9560	IDOT CP-2 (5/8" IRON PIN W/CAP)

LINE TABLE		
LINE	BEARING	DISTANCE
L1	N00°22'34"E	25.00'

**SEVENTH STREET
 (60' WIDE)**

**COULTER'S
 FOURTH ADDITION
 TO THE TOWN OF
 GRAND COTE**
 (NOW THE VILLAGE OF COULTERVILLE)
 (PB C, PG 52)
 Recorded March 16, 1860

**EXISTING & OF PAVEMENT &
 PROPOSED & CONSTRUCTION
 FAS ROUTE 1835 (ILLINOIS ROUTE 153)**

**COULTER'S
 FOURTH ADDITION
 TO THE TOWN OF
 GRAND COTE**
 (NOW THE VILLAGE OF COULTERVILLE)
 (PB C, PG 52)
 Recorded March 16, 1860

STATE OF ILLINOIS)
) SS
 COUNTY OF MADISON)
 I, TRAVIS J. NIEDERHOFER, AN ILLINOIS PROFESSIONAL LAND SURVEYOR,
 STATE THAT I HAVE SURVEYED THE PLAT OF HIGHWAY SHOWN HEREON AND THAT THIS
 PROFESSIONAL SERVICE CONFORMS TO THE CURRENT ILLINOIS MINIMUM STANDARDS FOR
 A BOUNDARY SURVEY FOR THE PROPOSED PARCEL(S) TO BE ACQUIRED BY THE STATE OF
 ILLINOIS, DEPARTMENT OF TRANSPORTATION, SHOWN HEREON.

DATED _____
 TRAVIS J. NIEDERHOFER, PLS NO. 035.003849
 LICENSE EXPIRATION DATE: 11/30/2018



VOLKERT
 1101 EASTPORT PLAZA DRIVE
 SUITE 100
 COLLINSVILLE, IL 62234
 618.345.8918
 IL DESIGN FIRM # 184.004027

ILLINOIS DEPARTMENT OF TRANSPORTATION
PLAT OF HIGHWAYS
 FAS ROUTE 1835 (IL 153)
 SECTION 113RS-3
 RANDOLPH COUNTY
 JOB NO. R-98-007-17
 STATION 343+00 TO STATION 346+00

SCALE: 1" = 20'

ILLINOIS DEPARTMENT OF TRANSPORTATION
 DIVISION OF HIGHWAYS/REGION 5/DISTRICT 8
 1102 EASTPORT PLAZA DRIVE
 COLLINSVILLE, ILLINOIS 62234-6198

F.A.S. RTE.	SECTION	COUNTY	TOTAL SHEETS	SHEET NO.
1835	113RS-3	RANDOLPH	24	20

CONTRACT NO. 76J18

FED. ROAD DIST. NO. ILLINOIS FED. AID PROJECT

* SEE TOTAL HOLDING AREA
 SOURCE TABLE ON SHEET 2

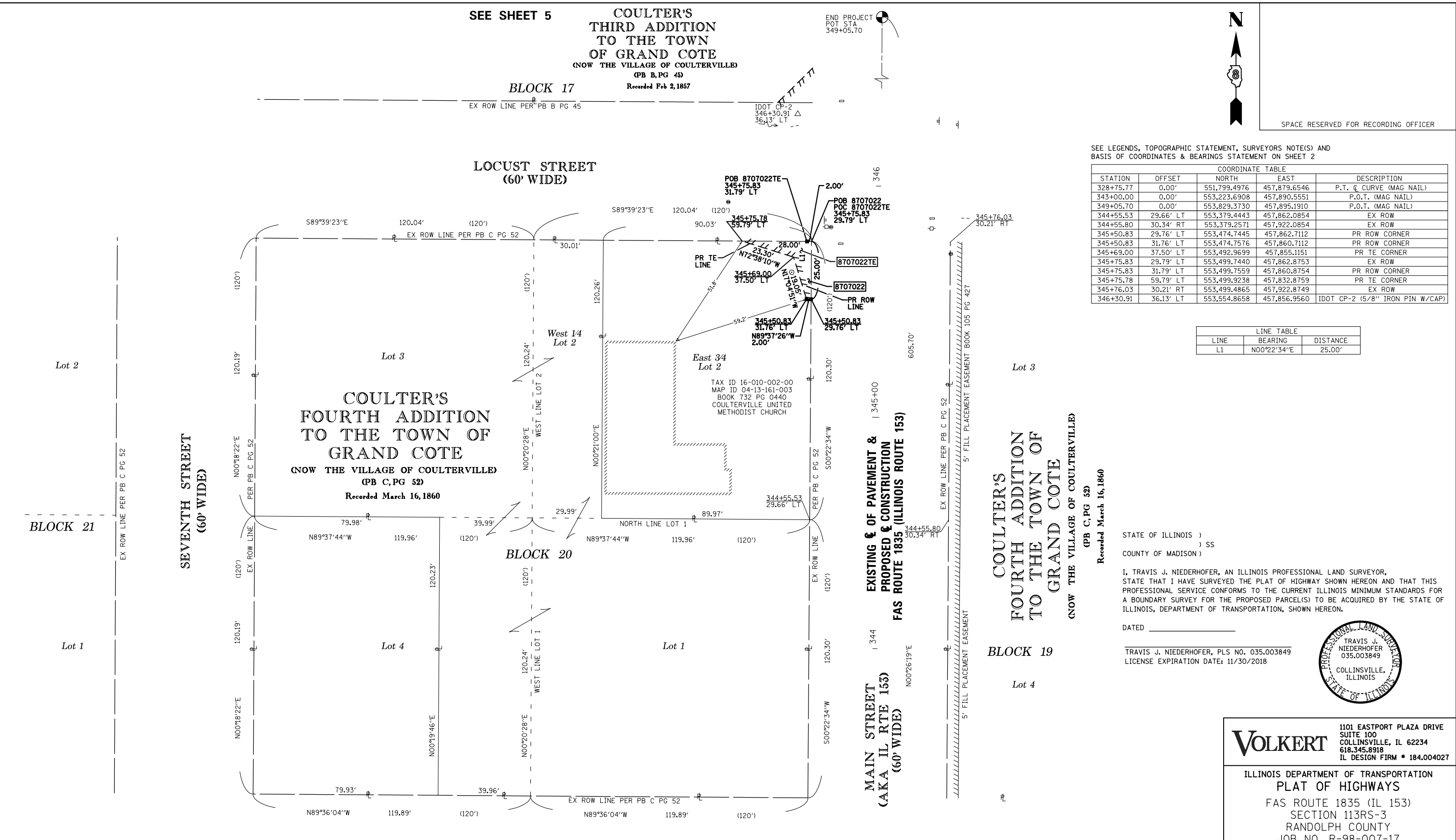
PARCEL NO.	OWNER	TOTAL HOLDING ACRES	FEE SIMPLE ACQUISITION		REMAINDER ACRES	EASEMENTS		PERMANENT TAX NUMBER	PROPERTY ACQUIRED BY		
			ACRES	SQ FT		PE = PERMANENT ACRES	TE = TEMPORARY ACRES			EASEMENT PURPOSE	
8707022	COULTERVILLE UNITED METHODIST CHURCH TITLE REPORT # 18-2016RH-723.0	0.2485	0.0011	50	0.2474	0.0038	167	TE	CONSTRUCTION AND GRADING	16-010-002-00	

COMPLETION DATE OF FIELD WORK PERFORMED
 LAND SURVEY: 12/30/2016 ROW STAKING:

SEE SHEET 3

POT STA
 343+00.00

BEGIN PROJECT
 PT STA
 328+75.77



PART OF THE NW 14 OF SECTION 13, T. 4 S., R. 5 W., OF THE 3RD P.M., RANDOLPH COUNTY, ILLINOIS



SPACE RESERVED FOR RECORDING OFFICER

SEE LEGENDS, TOPOGRAPHIC STATEMENT, SURVEYORS NOTE(S) AND BASIS OF COORDINATES & BEARINGS STATEMENT ON SHEET 2

STATION	OFFSET	NORTH	EAST	DESCRIPTION
343+00.00	0.00'	553,223.6908	457,890.5551	P.O.T. (MAG NAIL)
349+05.70	0.00'	553,829.3730	457,895.1910	P.O.T. (MAG NAIL)
346+30.91	36.13' LT	553,554.8658	457,856.9560	IDOT CP-2 (5/8" IRON PIN W/CAP)
346+35.83	29.86' LT	553,559.7427	457,863.2693	EX ROW
346+35.81	44.86' LT	553,559.8326	457,848.2696	PR TE CORNER
346+50.83	29.87' LT	553,574.7423	457,863.3678	PR TE CORNER
348+29.94	20.51' RT	553,753.4535	457,915.1168	IDOT CP-1 (CUT X)
348+45.04	30.08' LT	553,768.9463	457,864.6431	PR TE CORNER
348+65.04	30.11' LT	553,788.9459	457,864.7744	PR ROW CORNER
348+75.04	30.12' LT	553,798.9457	457,864.8401	EX ROW
348+75.00	40.12' LT	553,798.9845	457,854.8402	PR ROW CORNER
348+74.93	60.12' RT	553,799.0622	457,834.8403	PR TE CORNER
346+36.04	30.14' RT	553,559.4853	457,923.2689	EX ROW
347+55.65	30.01' RT	553,679.0990	457,924.0544	EX ROW
348+75.27	29.88' RT	553,798.7126	457,924.8399	EX ROW

LINE	BEARING	DISTANCE
L1	N44°42'02"W	14.12'

STATE OF ILLINOIS)
) SS
COUNTY OF MADISON)

I, TRAVIS J. NIEDERHOFER, AN ILLINOIS PROFESSIONAL LAND SURVEYOR, STATE THAT I HAVE SURVEYED THE PLAT OF HIGHWAY SHOWN HEREON AND THAT THIS PROFESSIONAL SERVICE CONFORMS TO THE CURRENT ILLINOIS MINIMUM STANDARDS FOR A BOUNDARY SURVEY FOR THE PROPOSED PARCEL(S) TO BE ACQUIRED BY THE STATE OF ILLINOIS, DEPARTMENT OF TRANSPORTATION, SHOWN HEREON.

DATED _____

TRAVIS J. NIEDERHOFER, PLS NO. 035.003849
LICENSE EXPIRATION DATE: 11/30/2018



VOLKERT
1101 EASTPORT PLAZA DRIVE
SUITE 100
COLLINSVILLE, IL 62234
618.345.8918
IL DESIGN FIRM # 184.004027

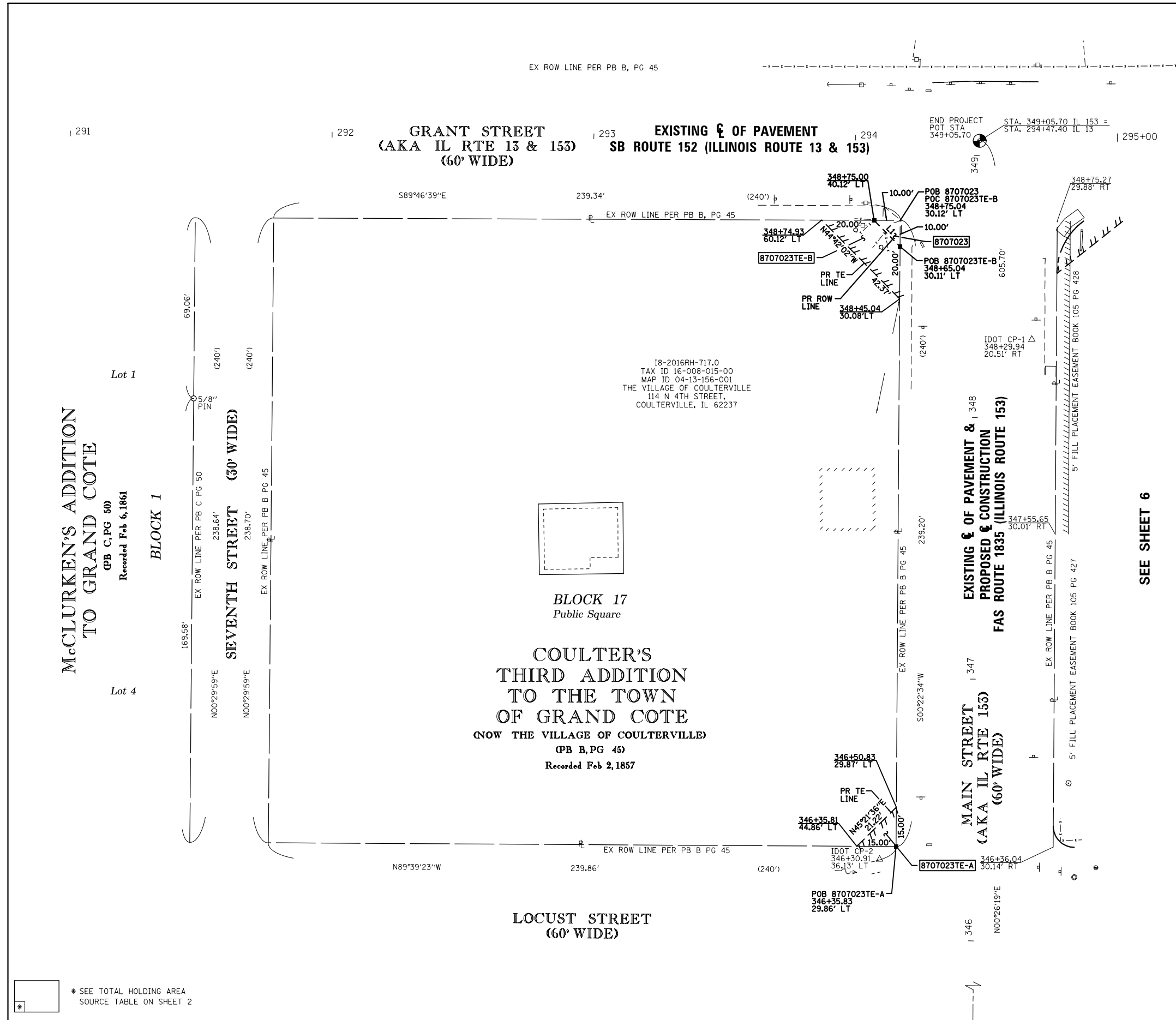
ILLINOIS DEPARTMENT OF TRANSPORTATION
PLAT OF HIGHWAYS
FAS ROUTE 1835 (IL 153)
SECTION 113RS-3
RANDOLPH COUNTY
JOB NO. R-98-007-17
STATION 346+00 TO STATION 349+05.70



F.A.S. RTE.	SECTION	COUNTY	TOTAL SHEETS	SHEET NO.
1835	113RS-3	RANDOLPH	24	21

ILLINOIS DEPARTMENT OF TRANSPORTATION
DIVISION OF HIGHWAYS/REGION 5/DISTRICT 8
1102 EASTPORT PLAZA DRIVE
COLLINSVILLE, ILLINOIS 62234-6198

COMPLETION DATE OF FIELD WORK PERFORMED _____
LAND SURVEY: 12/30/2016 ROW STAKING: _____
CONTRACT NO. 76J18
FED. ROAD DIST. NO. _____ ILLINOIS FED. AID PROJECT _____



* SEE TOTAL HOLDING AREA SOURCE TABLE ON SHEET 2

PARCEL NO.	OWNER	TOTAL HOLDING ACRES	FEE SIMPLE ACQUISITION		REMAINDER ACRES	EASEMENTS		PERMANENT TAX NUMBER	PROPERTY ACQUIRED BY
			ACRES	SQ FT		PE = PERMANENT ACRES	TE = TEMPORARY ACRES		
8707023	THE VILLAGE OF COULTERVILLE TITLE REPORT # 18-2016RH-717.0	1.3144	0.0011	50	1.3133	0.0026 TE-A 0.0092 TE-B	113 TE-A 400 TE-B	CONSTRUCTION AND GRADING	16-008-015-00

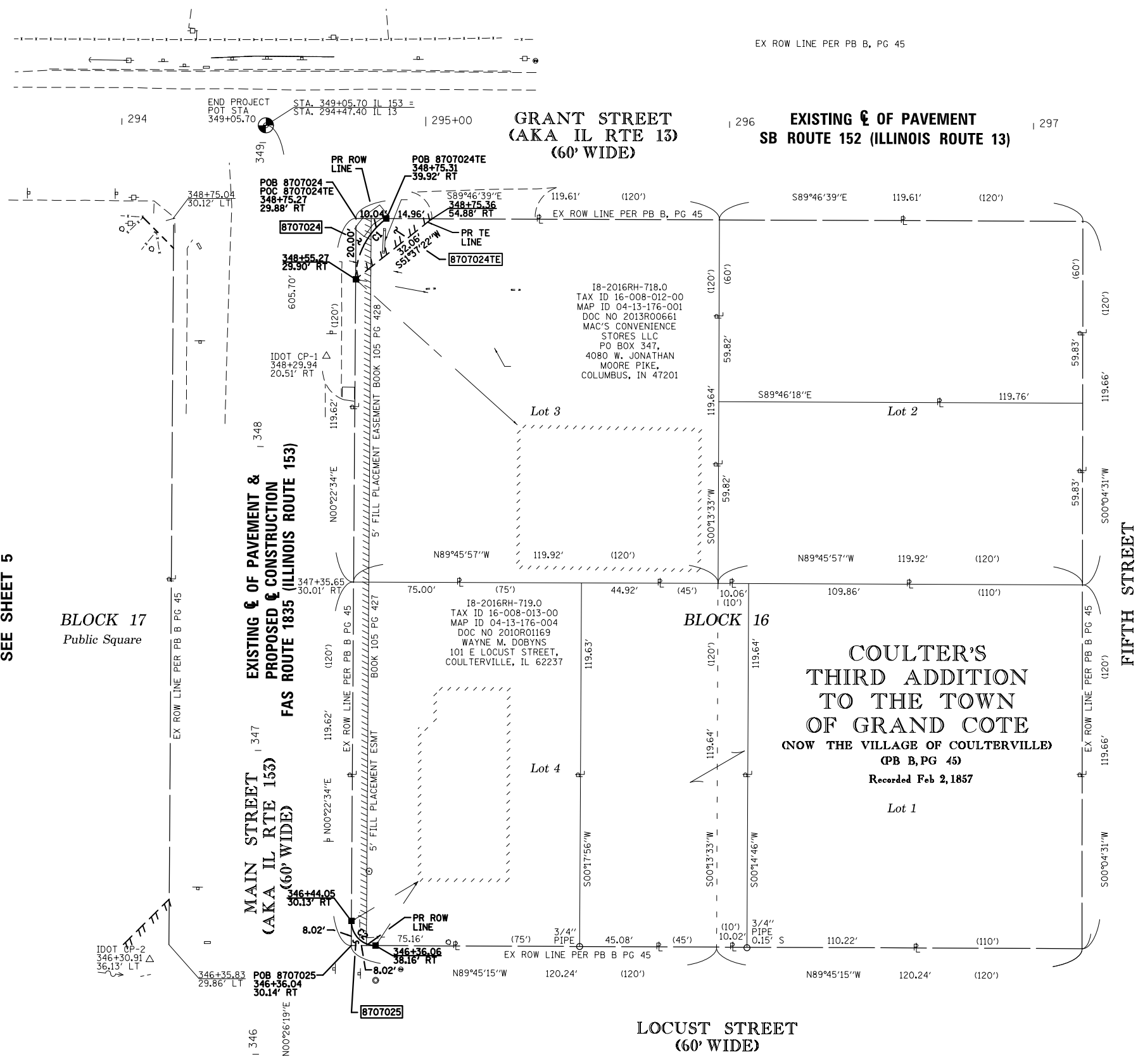


SPACE RESERVED FOR RECORDING OFFICER

SEE LEGENDS, TOPOGRAPHIC STATEMENT, SURVEYORS NOTE(S) AND BASIS OF COORDINATES & BEARINGS STATEMENT ON SHEET 2

COORDINATE TABLE				
STATION	OFFSET	NORTH	EAST	DESCRIPTION
343+00.00	0.00'	553,223.6908	457,890.5551	P.O.T. (MAG NAIL)
349+05.70	0.00'	553,829.3730	457,895.1910	P.O.T. (MAG NAIL)
346+30.91	36.13' LT	553,554.8658	457,856.9560	IDOT CP-2 (5/8" IRON PIN W/CAP)
346+36.04	30.14' RT	553,559.4853	457,923.2689	EX ROW
346+36.06	38.16' RT	553,559.4510	457,931.2871	PR ROW CORNER
346+44.05	30.13' RT	553,567.5034	457,923.3216	PR ROW CORNER
346+35.83	29.86' LT	553,559.7427	457,863.2693	EX ROW
347+35.65	30.01' RT	553,679.0990	457,924.0544	EX ROW
348+29.94	20.51' RT	553,753.4535	457,915.1168	IDOT CP-1 (CUT X)
348+55.27	29.90' RT	553,778.7131	457,924.7085	PR ROW CORNER
348+75.21	29.88' RT	553,798.7126	457,924.8399	EX ROW
348+75.31	39.92' RT	553,798.6767	457,934.8758	PR ROW CORNER
348+75.36	54.88' RT	553,798.6155	457,949.8397	PR TE CORNER
348+75.04	30.12' LT	553,798.9457	457,864.8401	EX ROW

CURVE TABLE				
CURVE	RADIUS	LENGTH	CHORD BEARING	CHORD LENGTH
C1	25.00'	23.23'	S26°59'34"W	22.40'
C2	8.00'	12.58'	S44°41'20"E	11.33'



STATE OF ILLINOIS)
) SS
 COUNTY OF MADISON)

I, TRAVIS J. NIEDERHOFER, AN ILLINOIS PROFESSIONAL LAND SURVEYOR, STATE THAT I HAVE SURVEYED THE PLAT OF HIGHWAY SHOWN HEREON AND THAT THIS PROFESSIONAL SERVICE CONFORMS TO THE CURRENT ILLINOIS MINIMUM STANDARDS FOR A BOUNDARY SURVEY FOR THE PROPOSED PARCEL(S) TO BE ACQUIRED BY THE STATE OF ILLINOIS, DEPARTMENT OF TRANSPORTATION, SHOWN HEREON.

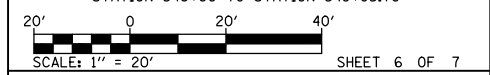
DATED _____

TRAVIS J. NIEDERHOFER, PLS NO. 035.003849
 LICENSE EXPIRATION DATE: 11/30/2018



VOLKERT 1101 EASTPORT PLAZA DRIVE
 SUITE 100
 COLLINGSVILLE, IL 62234
 618.345.8918
 IL DESIGN FIRM # 184.004027

ILLINOIS DEPARTMENT OF TRANSPORTATION
PLAT OF HIGHWAYS
 FAS ROUTE 1835 (IL 153)
 SECTION 113RS-3
 RANDOLPH COUNTY
 JOB NO. R-98-007-17
 STATION 346+00 TO STATION 349+05.70



ILLINOIS DEPARTMENT OF TRANSPORTATION
 DIVISION OF HIGHWAYS/REGION 5/DISTRICT 8
 1102 EASTPORT PLAZA DRIVE
 COLLINGSVILLE, ILLINOIS 62234-6198

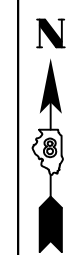
F.A.S. RTE.	SECTION	COUNTY	TOTAL SHEETS	SHEET NO.
1835	113RS-3	RANDOLPH	24	22

COMPLETION DATE OF FIELD WORK PERFORMED _____
 LAND SURVEY: 12/30/2016 ROW STAKING: _____
 FED. ROAD DIST. NO. _____ ILLINOIS FED. AID PROJECT _____

PARCEL NO.	OWNER	TOTAL HOLDING ACRES	FEE SIMPLE ACQUISITION		REMAINDER ACRES	EASEMENTS		PERMANENT TAX NUMBER	PROPERTY ACQUIRED BY
			ACRES	SQ FT		TE = TEMPORARY ACRES	SQ FT		
8707024	MAC'S CONVENIENCE STORES LLC TITLE REPORT # 18-2016RH-718.0	0.3289	0.0014	60	0.3275	0.0044 TE	190 TE	CONSTRUCTION AND GRADING	16-008-012-00
8707025	WAYNE M. DOBYNS TITLE REPORT # 18-2016RH-719.0	0.2062	0.0003	14	0.2059	-	-	CONSTRUCTION AND GRADING	16-008-013-00

SEE SHEET 4

CENTERLINE AND CONTROL POINT TIE SHEET



SPACE RESERVED FOR RECORDING OFFICER

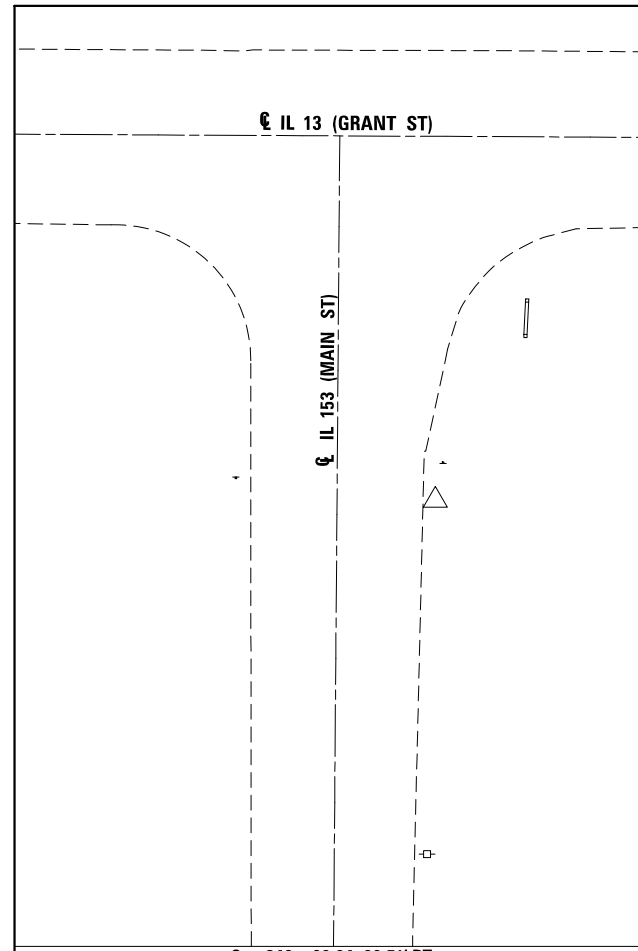
STATE OF ILLINOIS)
) SS
 COUNTY OF MADISON)

I, TRAVIS J. NIEDERHOFER, AN ILLINOIS PROFESSIONAL LAND SURVEYOR, STATE THAT I HAVE SURVEYED THE PLAT OF HIGHWAY SHOWN HEREON AND THAT THIS PROFESSIONAL SERVICE CONFORMS TO THE CURRENT ILLINOIS MINIMUM STANDARDS FOR A BOUNDARY SURVEY FOR THE PROPOSED PARCEL(S) TO BE ACQUIRED BY THE STATE OF ILLINOIS, DEPARTMENT OF TRANSPORTATION, SHOWN HEREON.

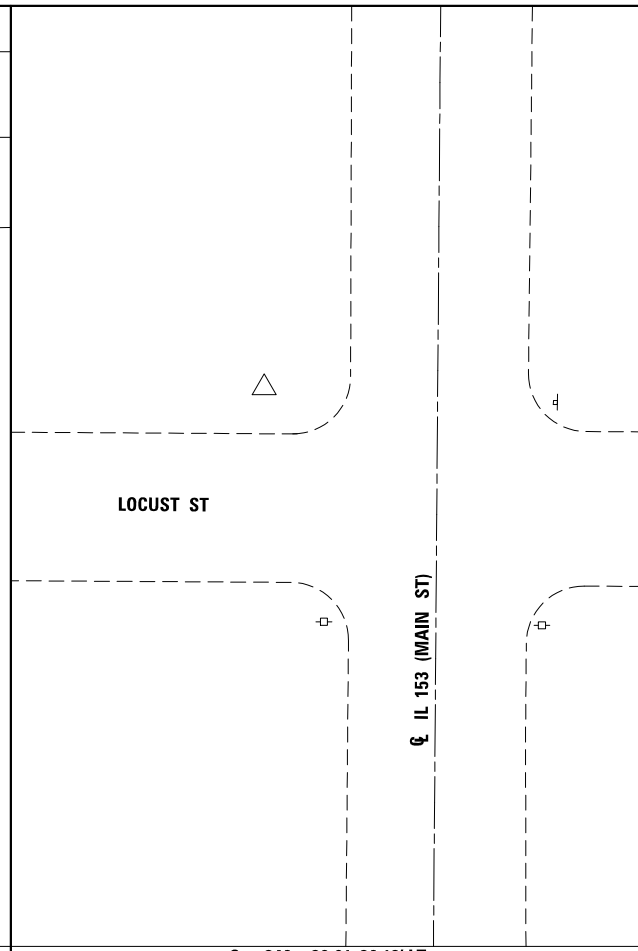
DATED _____



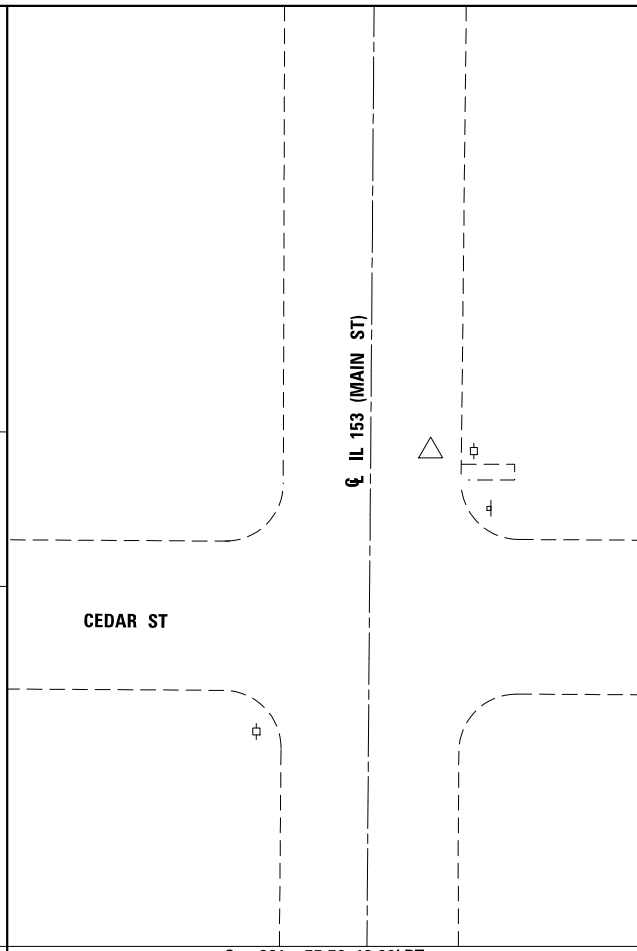
TRAVIS J. NIEDERHOFER, PLS NO. 035.003849
 LICENSE EXPIRATION DATE: 11/30/2018



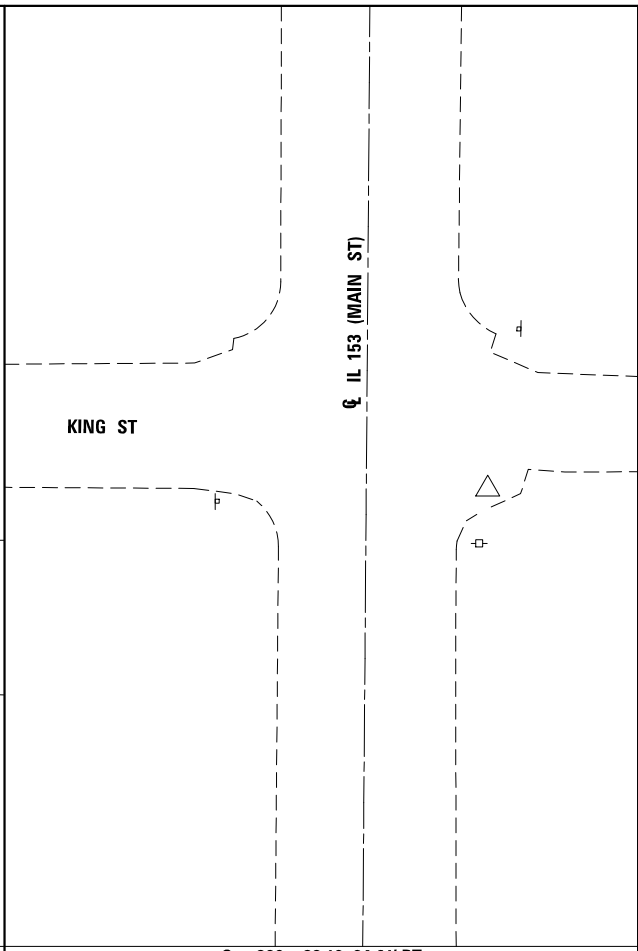
Sta. 348 + 29.94 20.51' RT
CP-1 (CUT "X")
 N=553,753.4535, E=457,915.1168



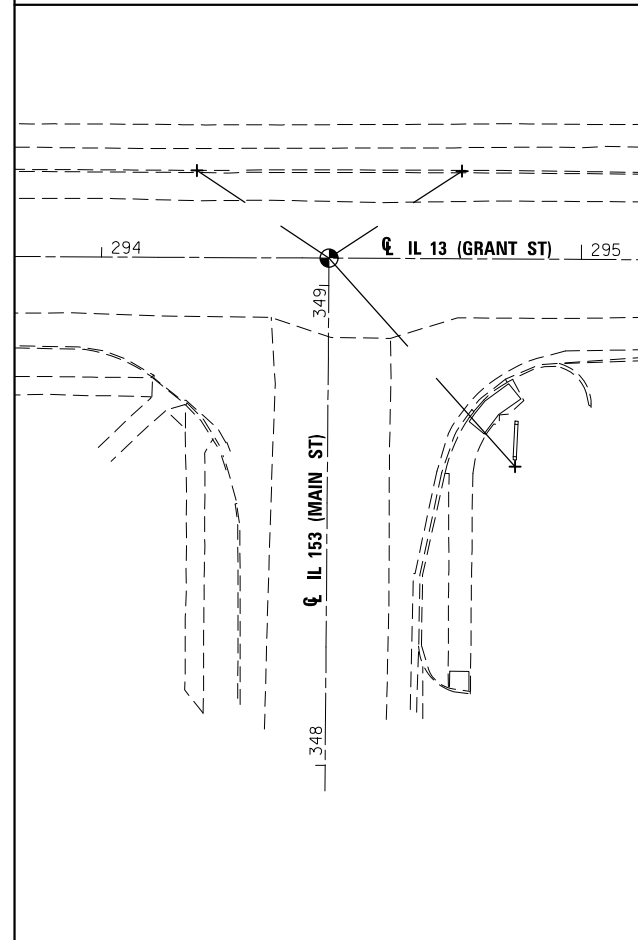
Sta. 346 + 30.91 36.13' LT
CP-2 (5/8" IRON PIN W/CAP)
 N=553,554.8658, E=457,856.9560



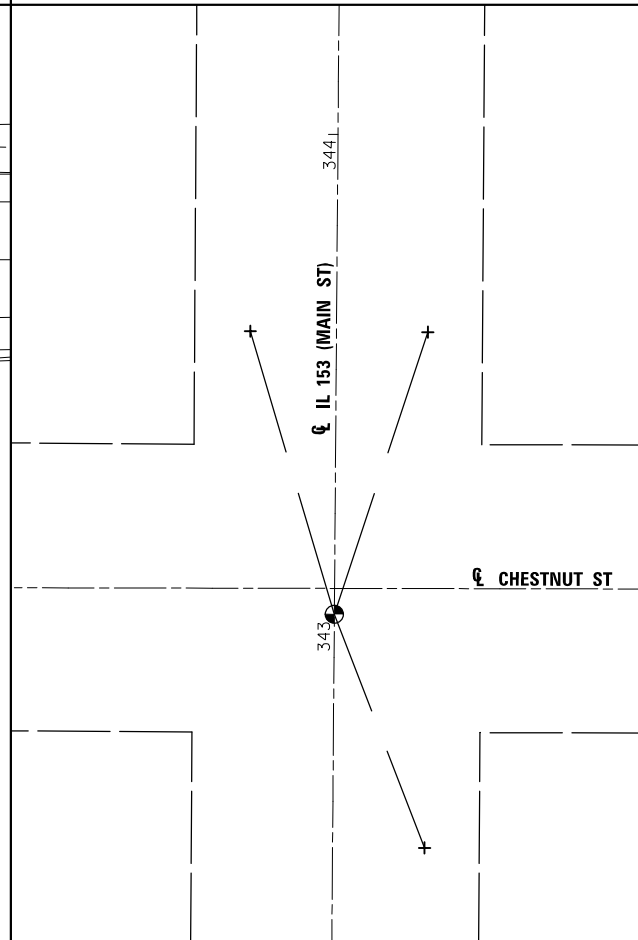
Sta. 331 + 75.79 13.69' RT
CP-3 (MAG NAIL)
 N=552,099.4084, E=457,895.6364



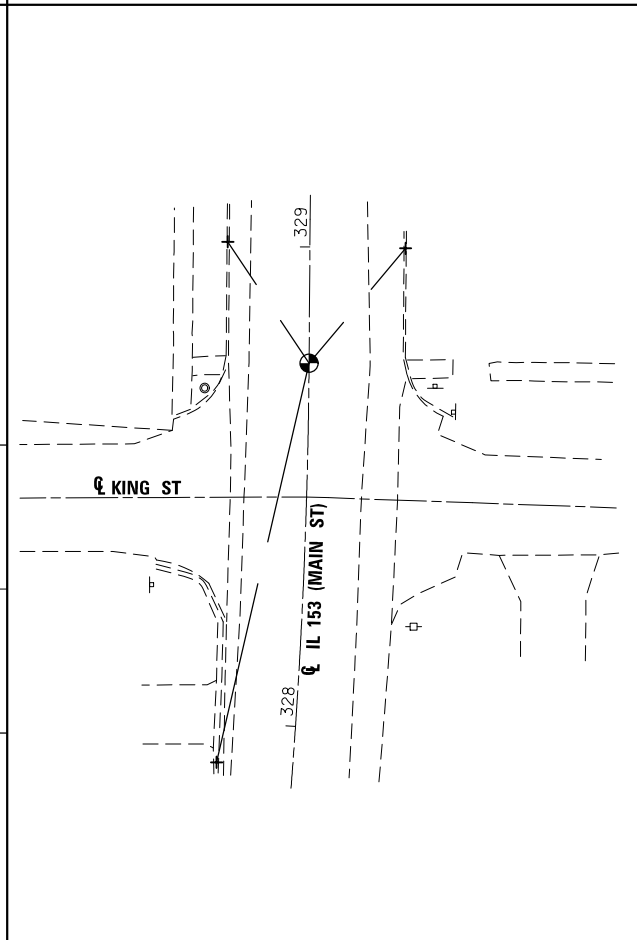
Sta. 328 + 33.19 24.61' RT
CP-4 (MAG NAIL)
 N=551,755.9251, E=457,903.2100



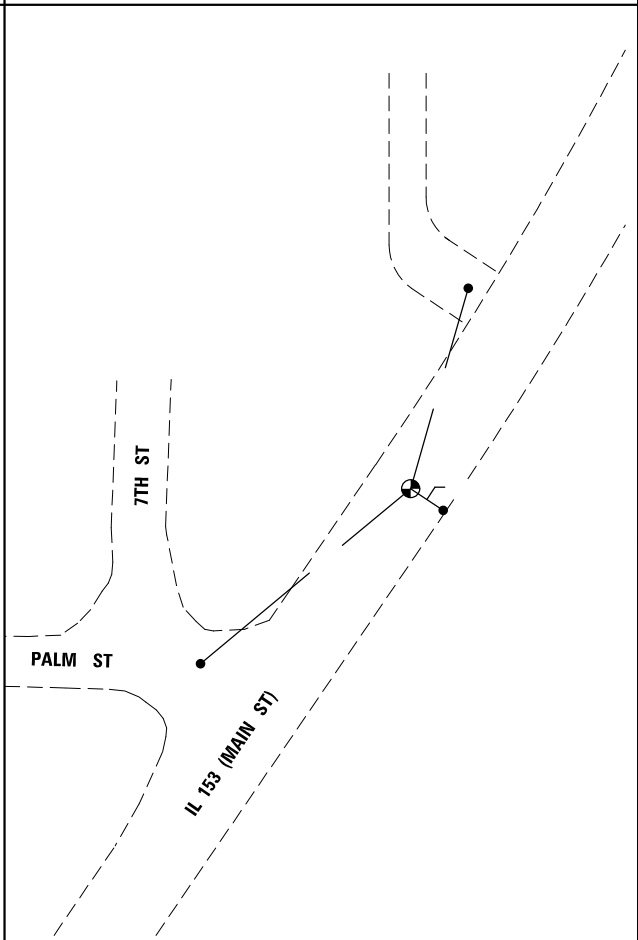
P.O.T. Sta. 349 + 05.70
MAG NAIL
 N=553,829.3730, E=457,895.1910



P.O.T. Sta. 343 + 00.00
MAG NAIL
 N=553,223.6908, E=457,890.5551

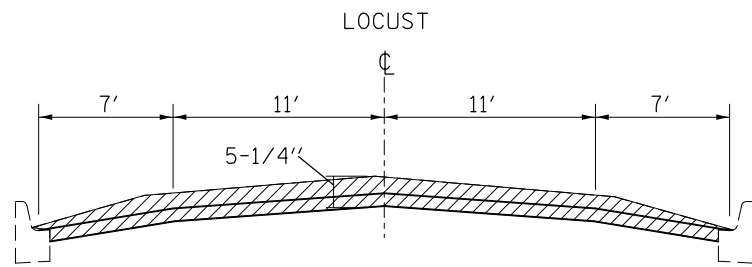


P.T. Sta. 328 + 75.77
MAG NAIL
 N=551,799.4976, E=457,879.6546

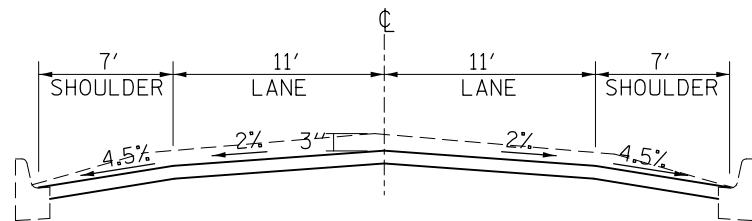


P.C. Sta. 321 + 22.14
MAG NAIL
 N=551,090.7703, E=457,657.6800

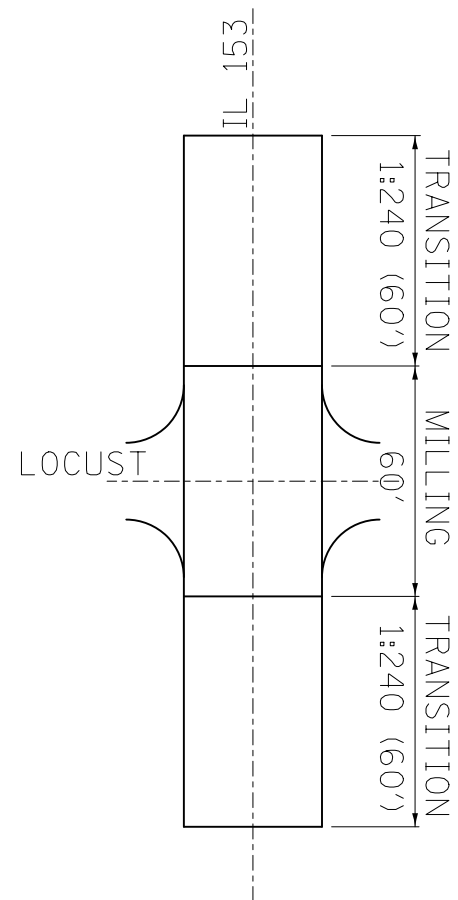
COMPLETION DATE OF FIELD WORK PERFORMED			
LAND SURVEY:		ROW STAKING:	
ILLINOIS DEPARTMENT OF TRANSPORTATION PLAT OF HIGHWAYS FAS ROUTE 1835 (IL 153) SECTION 113RS-3 RANDOLPH COUNTY JOB NO. R-98-007-17 CENTERLINE AND CONTROL POINT TIE SHEET			
NOT TO SCALE		SHEET 7 OF 7	
ILLINOIS DEPARTMENT OF TRANSPORTATION DIVISION OF HIGHWAYS/REGION 5/DISTRICT 8 1102 EASTPORT PLAZA DRIVE COLLINSVILLE, ILLINOIS 62234-6198			
F.A.S. RTE.	SECTION	COUNTY	TOTAL SHEETS
1835	113RS-3	RANDOLPH	24
			SHEET NO.
			23
CONTRACT NO. 76J18			
FED. ROAD DIST. NO.	ILLINOIS FED. AID PROJECT		



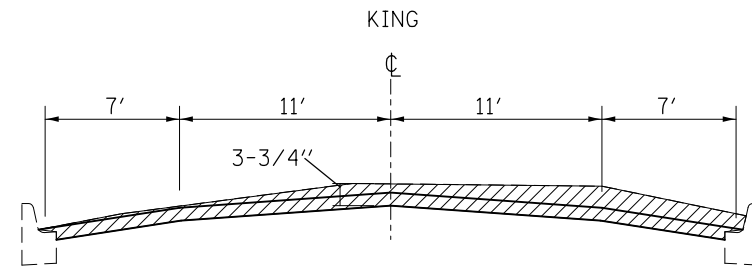
NOTE:
MILL EXTRA 3" THRU THE INTERSECTION OF IL 153 AND LOCUST
FOR A TOTAL OF 5-1/4".



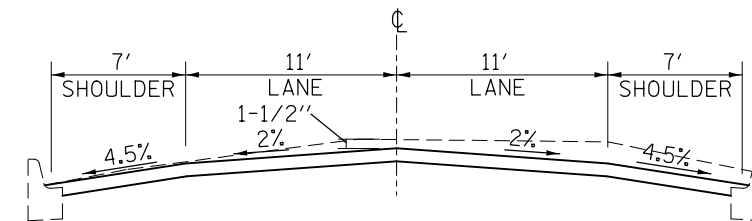
NOTE:
PROPOSED ELEVATION AT THE CENTERLINE OF IL 153
AND LOCUST WILL BE -3".



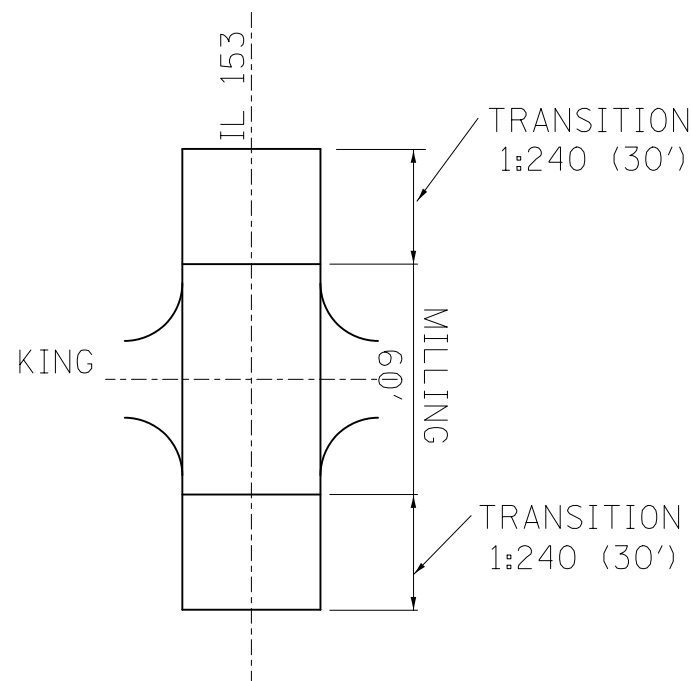
MILLING AT LOCUST



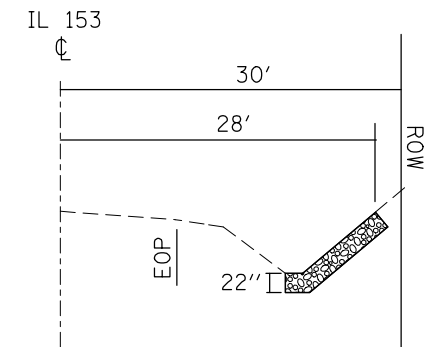
NOTE:
MILL EXTRA 1-1/2" THRU THE INTERSECTION OF IL 153 AND KING
FOR A TOTAL OF 3-3/4".



NOTE:
PROPOSED ELEVATION AT THE CENTERLINE OF IL 153
AND KING WILL BE -1-1/2".



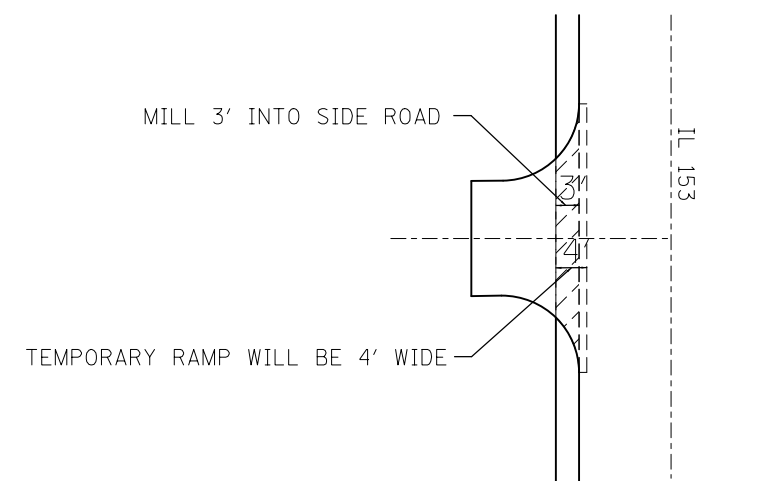
MILLING AT KING



NOTE:
SEE STONE RIPRAP SCHEDULE FOR LOCATIONS, WIDTHS AND LENGTHS.
STONE RIPRAP CLASS A4 - 16"
BEDDING THICKNESS - 6"

STONE RIPRAP DETAIL

NOT TO SCALE



SIDE ROAD DETAIL

NOT TO SCALE

FILE NAME =	USER NAME = Burnsdeem	DESIGNED -	REVISED -
pw:\IL084EBIDINTEG\Illinois.gov\PWIDOT\Documents\IDOT Offices\District 8\Projects\0876\Drawings\LEADsheets\0876J18-sht-pland		CHECKED -	REVISED -
Default	PLOT SCALE = 100.0000' / in.	DATE -	REVISED -
	PLOT DATE = 5/11/2017		

STATE OF ILLINOIS
DEPARTMENT OF TRANSPORTATION

DETAILS

SCALE: SHEET OF SHEETS STA. TO STA.

F.A.S. RTE.	SECTION	COUNTY	TOTAL SHEETS	SHEET NO.
1835	113RS-3	RANDOLPH	24	24
CONTRACT NO. 76J18				
ILLINOIS FED. AID PROJECT				