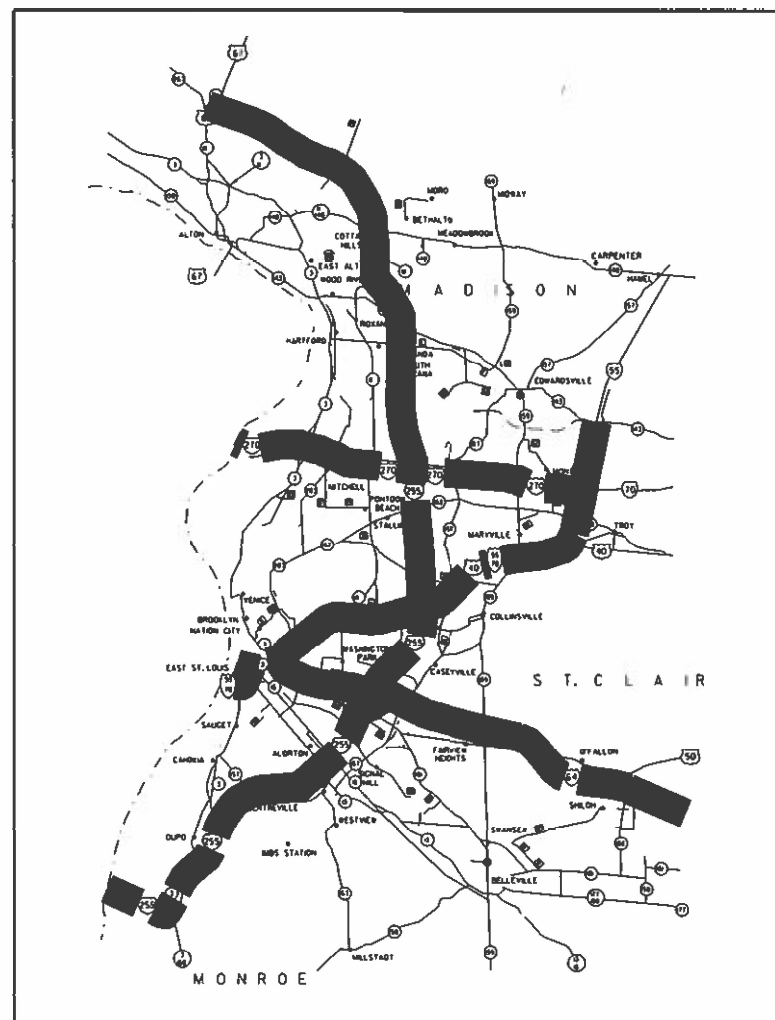


STATE OF ILLINOIS
DEPARTMENT OF TRANSPORTATION

PROPOSED
HIGHWAY PLANS

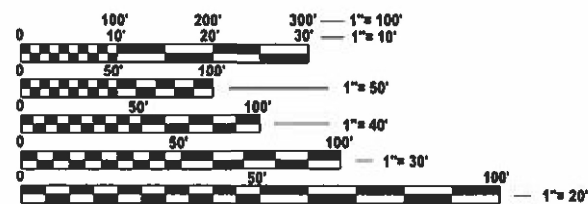
VARIOUS ROUTES
SECTION DIST 8 WEED SPRAYING 2023-1
WEED SPRAYING (JOHNSON GRASS)
VARIOUS COUNTY

C-98-066-23



INDEX OF SHEETS

1. COVER SHEET, INDEX OF SHEETS, MAP
2. HIGHWAY STANDARDS, SPRAY SCHEDULE, AND COMMITMENTS
3. SUMMARY OF QUANTITIES
- 4-7. OMISSIONS/NO SPRAY SITES



FULL SIZE PLANS HAVE BEEN PREPARED USING STANDARD ENGINEERING SCALES. REDUCED SIZED PLANS WILL NOT CONFORM TO STANDARD SCALES. IN MAKING MEASUREMENTS ON REDUCED PLANS, THE ABOVE SCALES MAY BE USED.

J.U.L.I.E.
JOINT UTILITY LOCATION INFORMATION FOR EXCAVATION
1-800-892-0123
OR 811

PROJECT ENGINEER - CHERYL KEPLAR
PROJECT MANAGER - TONI MANN

CONTRACT NO. 76R98

F.A. RTE.	SECTION	COUNTY	TOTAL SHEETS	SHEET NO.
*	DIST 8 WEED SPRAYING 2023-1	VARIOUS	7	1
		ILLINOIS	CONTRACT NO. 76R98	

*VARIOUS

D-98-024-23



STATE OF ILLINOIS
DEPARTMENT OF TRANSPORTATION

SUBMITTED MARCH 23 20 23
Paul D. Brannon
REGIONAL ENGINEER

May 12, 2023 [Signature]
ENGINEER OF DESIGN AND ENVIRONMENT

May 12, 2023 [Signature]
DIRECTOR OF HIGHWAYS PROJECT IMPLEMENTATION

PRINTED BY THE AUTHORITY
OF THE STATE OF ILLINOIS

MODEL: g:\workbooks\8\sheet1
 FILE NAME: p:\it\p2\sp1\p10\p10\Documents\DOT Office\District 8\CRD Project\Dist8\CAD\Drawings\827898-SJT_generations.dcn

STANDARDS
 000001-08
 001006
 701001-02
 701006-05
 701101-05
 701106-02
 701301-04
 701426-09
 701901-08

DISTRICT 8 WEED SPRAYING 2023-1				
			2023	2024
COUNTY	ROUTE	MILES	ACRES	ACRES
MADISON	I-55/70	30	90	90
	I-55/70	20	60	60
	I-270	22	66	66
	I-255	21	63	63
	IL 255	52	156	156
ST. CLAIR	IL 3	20	60	60
	I-64	26	78	78
	I-255	35	105	105
MONROE	IL 3	10	30	30
	IL 15	10	30	30
	I-255	20	60	60
MISCELLANEOUS	IL 3	10	30	30
			22	22
TOTAL		276	1700	

MILEAGE AND ACREAGE SHOWN IS ESTIMATED. SPECIFIC LOCATIONS TO BE DETERMINED BY THE RESIDENT ENGINEER ONCE JOHNSON GRASS IS VISIBLE.

COMMITMENTS
 BROADCAST HERBICIDE USE IS RESTRICTED MAY 15 TO OCTOBER 1
 TO PROMOTE WILDFLOWER GROWTH ON ROW

* VARIOUS
 ** DIST 8 WEED SPRAYING 2021-4

USER NAME = Kevin Lewis	DESIGNED - _____	REVISED - _____
PLOT SCALE = 0.08333317'' / in.	DRAWN - _____	REVISED - _____
PLOT DATE = 6/20/2023	CHECKED - _____	REVISED - _____
	DATE - _____	REVISED - _____

**STATE OF ILLINOIS
 DEPARTMENT OF TRANSPORTATION**

**HIGHWAY STANDARDS, SPRAY SCHEDULE,
 AND COMMITMENTS**

F.A. RTE.	SECTION	COUNTY	TOTAL SHEETS	SHEET NO.
*	**	VARIOUS	7	2
		CONTRACT NO. 76R98		
			ILLINOIS FED. AID PROJECT	

MODEL: SDO (Sheet)
 FILE NAME: P:\Bids\pcc\barfy.com\PI\DOT\Documents\DOT Office\District 8\ORD Project\B87688\CADD\B87688-SHT-SC02.DGN

CODE NO.	ITEM	UNIT	TOTAL QUANTITY	CONSTR. CODE
				URBAN 100% STATE
				0031
67100100	MOBILIZATION	L SUM	1	1
K0012950	HERBICIDE SPRAYING	ACRE	1700	1700

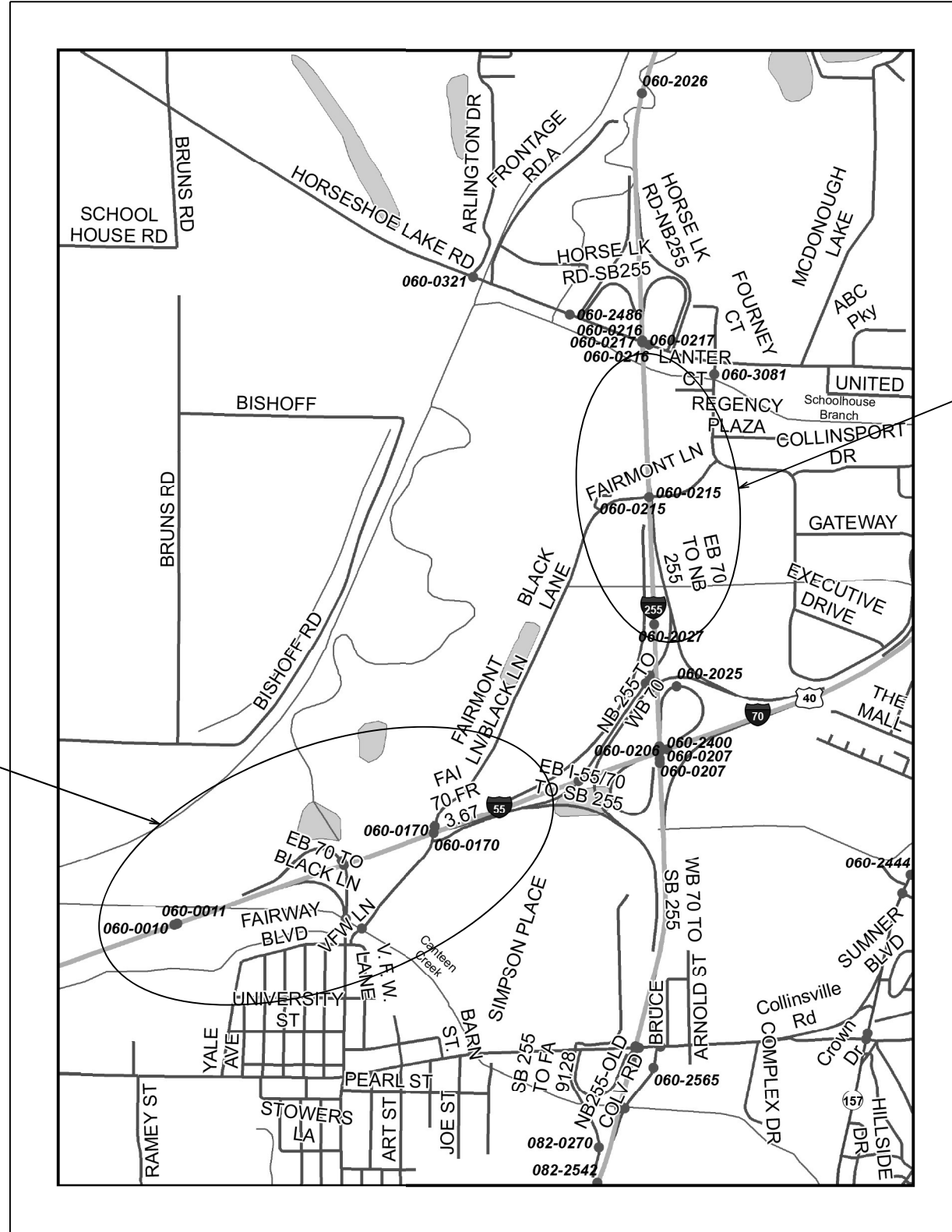
* VARIOUS
 ** DIST & WEED SPRAYING 2023-1

USER NAME = Kevin.Lewis	DESIGNED -	REVISED -	STATE OF ILLINOIS DEPARTMENT OF TRANSPORTATION	SUMMARY OF QUANTITIES SHEET TITLE LINE 2				F.A. RTE.	SECTION	COUNTY	TOTAL SHEETS	SHEET NO.
PLOT SCALE = 0.16666633' / in.	DRAWN -	REVISED -		SCALED	SHEET 0	OF 1	SHEETS	STA. ___+___	TO STA. ___+___	VARIOUS	7	3
PLOT DATE = 3/20/2023	CHECKED -	REVISED -		CONTRACT NO. 76R98								
	DATE -	REVISED -		ILLINOIS FED. AID PROJECT								



DO NOT SPRAY

DO NOT SPRAY



MADISON COUNTY
LEVEE LAKE
SECTION 36, T3N-R9W

MODEL: omissions.rvt [E:\rvt]
FILE NAME: P:\MIDOT\Documents\DOT Office\District 8\ORD Projects\087698\CADD\087698-SHT-01.dwg

USER NAME = Kevin.Lewis	DESIGNED -	REVISED -
	DRAWN -	REVISED -
PLOT SCALE = 0.16666633' / in.	CHECKED -	REVISED -
PLOT DATE = 3/20/2023	DATE -	REVISED -

STATE OF ILLINOIS
DEPARTMENT OF TRANSPORTATION

OMISSIONS NAMEOKI AND GRANITE TOWNSHIP

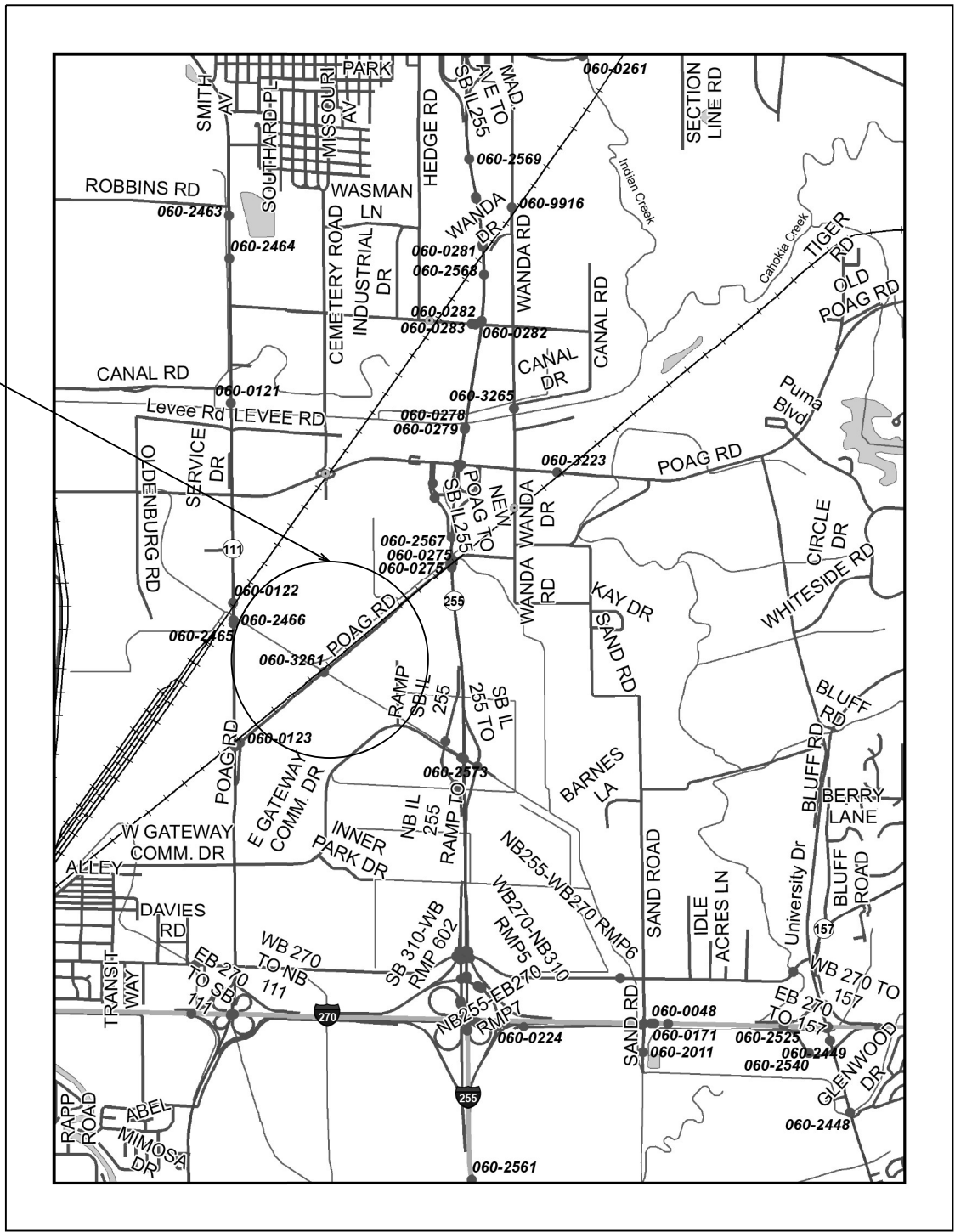
SHEET 0 OF 1 SHEETS STA. ___+___ TO STA. ___+___

* VARIOUS
** DIST 8 WEED SPRAYING 2023-1

F.A. RTE.	SECTION	COUNTY	TOTAL SHEETS	SHEET NO.
*	**	VARIOUS	7	4
			CONTRACT NO. 76R98	
		ILLINOIS FED. AID PROJECT		



DO NOT SPRAY



MADISON COUNTY
POAG R.R. PRAIRIE
SECTION 24, T4N-R9W

MODEL: omissions.dwg
 FILE NAME: P:\MIDOT\Documents\DOT Office\District 8\ORD Project\037698\CADD\037698-SIT-plan.dgn

USER NAME = Kevin.Lewis	DESIGNED -	REVISED -
PLOT SCALE = 0.16666833' / in.	DRAWN -	REVISED -
PLOT DATE = 3/20/2023	CHECKED -	REVISED -
	DATE -	REVISED -

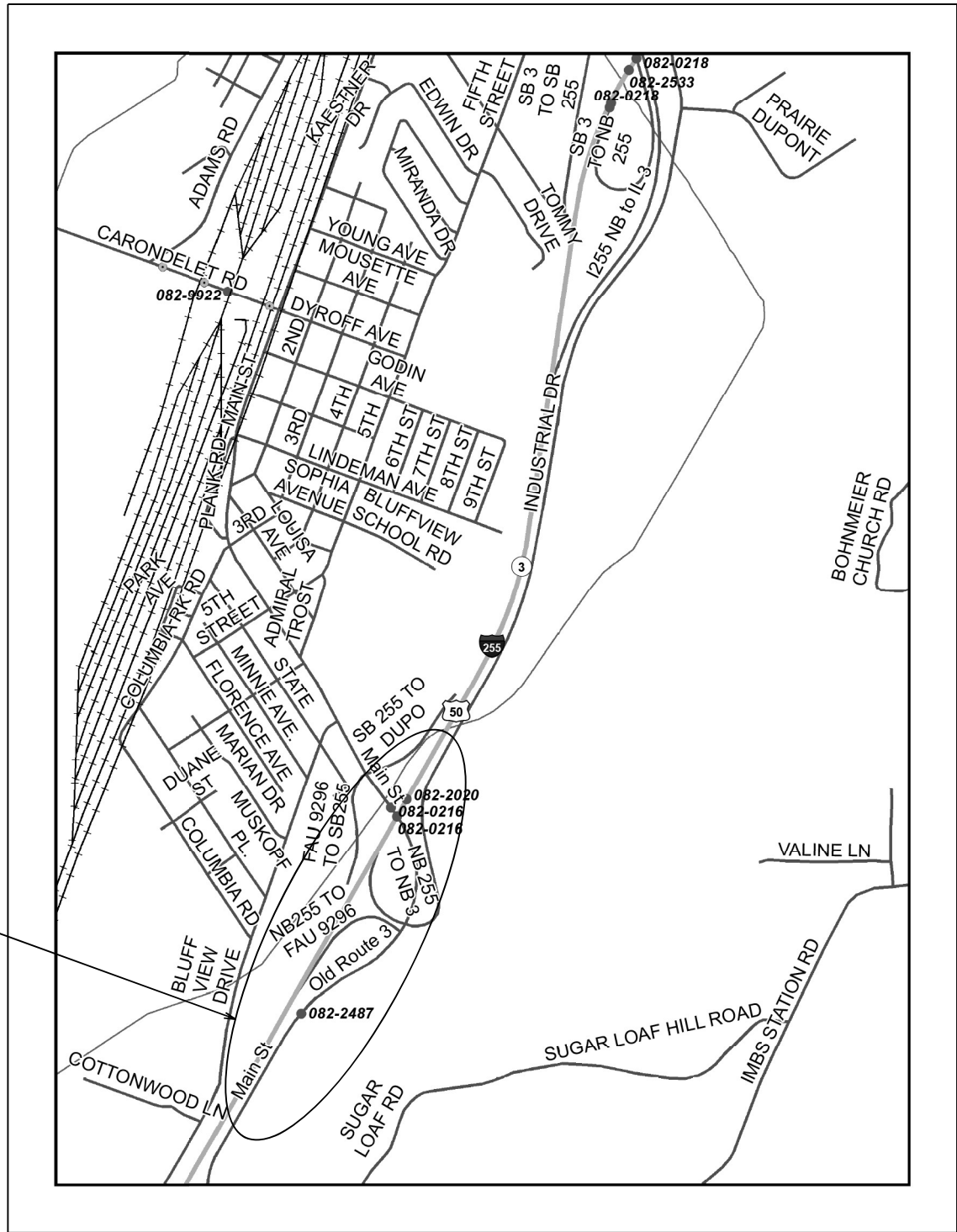
**STATE OF ILLINOIS
DEPARTMENT OF TRANSPORTATION**

**OMISSIONS CHOUTEA &
GRANITE CITY TOWNSHIP**

SCHEMATIC SHEET 0 OF 1 SHEETS STA. ___+___ TO STA. ___+___

* VARIOUS
** DIST 8 WEED SPRAYING 2023-1

F.A. RTE.	SECTION	COUNTY	TOTAL SHEETS	SHEET NO.
*	**	VARIOUS	7	5
CONTRACT NO. 76R98				
ILLINOIS FED. AID PROJECT				



ST. CLAIR COUNTY
DUPO PRAIRE/SUGAR LOAF PRAIRIE
SECTION 24 & 28, TIN-R10W

* VARIOUS
** DIST. 8 WEED SPRAYING 2023-1

MODEL: omissions_01 (dwg)
FILE NAME: P:\GIS\2023\GIS\CDOT\Projects\082\CDOT\Documents\CDOT\Office\Dist18\ORD\Project\082\GIS\CDOT\082-2533-SHT-6.dwg

USER NAME	= Kevin.Lewis
PLOT SCALE	= 0.16666833' / in.
PLOT DATE	= 3/20/2023

DESIGNED	-
DRAWN	-
CHECKED	-
DATE	-

REVISED	-
REVISED	-
REVISED	-
REVISED	-

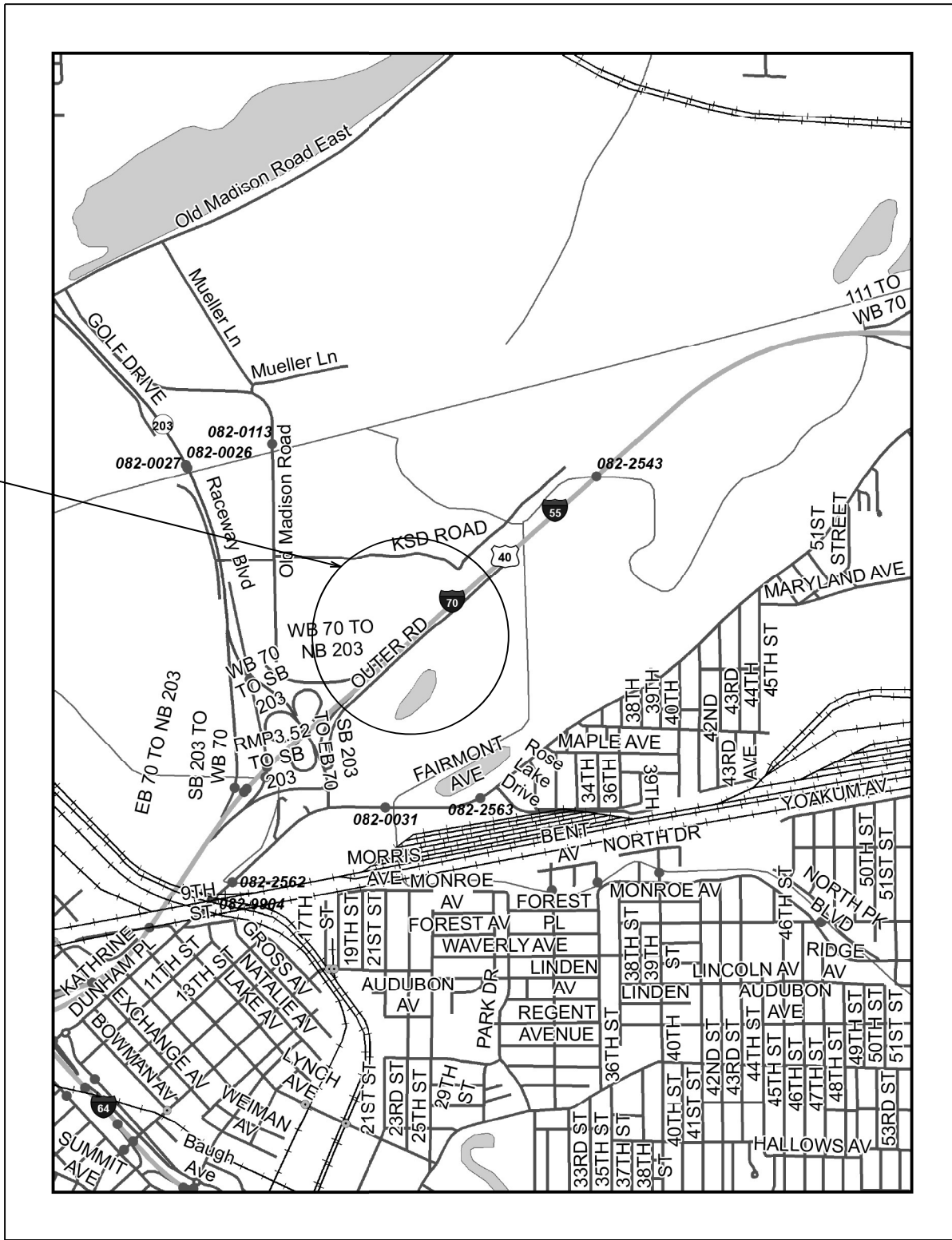
STATE OF ILLINOIS
DEPARTMENT OF TRANSPORTATION

OMISSIONS
SUGAR LOAF TOWNSHIP

SCALE	SHEET 0	OF 1	SHEETS	STA.	__+__	TO STA.	__+__
-------	---------	------	--------	------	-------	---------	-------

F.A. RTE.	SECTION	COUNTY	TOTAL SHEETS	SHEET NO.
*	**	COUNTY	7	6
				CONTRACT NO. 76R98
				ILLINOIS FED. AID PROJECT

DO NOT SPRAY



ST. CLAIR COUNTY
FAIRMOUNT CITY SITE
TIN-R9W

MODEL: arimilator_4 [E:\rev]
 FILE NAME: P:\MIDOT\Documents\DOT Office\District 8\ORD Project\082\808\CADD\082\082-R9W-S1T-01.dwg

USER NAME = Kevin.Lewis	DESIGNED -	REVISED -
	DRAWN -	REVISED -
PLOT SCALE = 0.16666833' / in.	CHECKED -	REVISED -
PLOT DATE = 3/20/2023	DATE -	REVISED -

**STATE OF ILLINOIS
DEPARTMENT OF TRANSPORTATION**

OMISSIONS FAIRMOUNT CITY SITE			
SC 7482	SHEET 0	OF 1 SHEETS	STA. ___+___ TO STA. ___+___

* VARIOUS ** DIST 8 WEED SPRAYING 2023-1				
F.A. RTE.	SECTION	COUNTY	TOTAL SHEETS	SHEET NO.
	**	COUNTY	7	7
CONTRACT NO. 76R98				
ILLINOIS FED. AID PROJECT				