

State of Illinois
Department of Natural Resources
Office of Mines and Minerals
Division of Abandoned Mined Lands

Funded by the
 United States Department of Interior
 Federal Office of Surface Mining

**Red Ember - Sediment Control
 Reclamation Project
 AML-GFuE-0406
 Fulton County
 1LR**

SCHEDULE OF DRAWINGS:

1. Cover Sheet
 2. Summary of Quantities/General Notes/Location Map
 3. Reclamation Plan Sheet Layout
 - 4-23. Existing & Proposed Conditions
 24. Details
- IDOT STANDARD 702001

Prepared By IDNR Staff

Approved for Bidding:


 Joseph R. Angleton, Director
 Office of Mines and Minerals

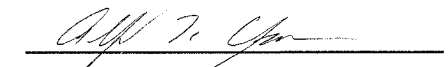
Red Ember - Sediment Control
 Fulton County



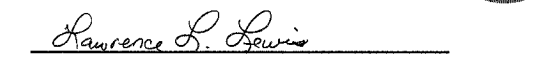
PRE-BID MEETING:

A PRE-BID MEETING IS SCHEDULED FOR THIS PROJECT AT 9:00 A.M. FRIDAY JULY 29, 2005. ALL INTERESTED POTENTIAL BIDDERS ARE TO MEET AT THE INTERSECTION OF NORTH TOMPKINS ROAD AND EAST ARROW ROAD, SOUTH OF FIATT.

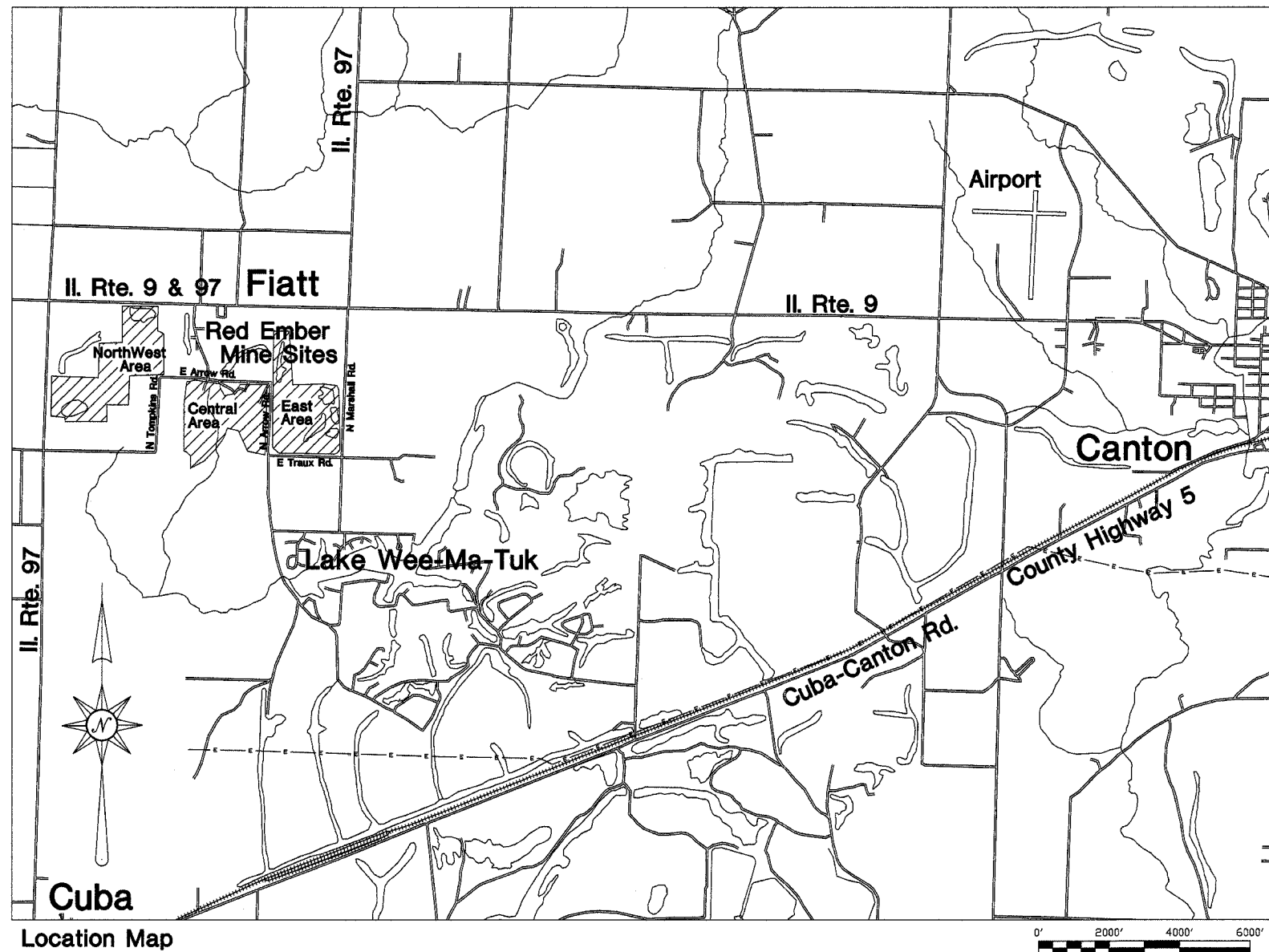
Approved By:


 Alfred L. Clayborne, Manager
 AML Division

Approved By:


 Lawrence L. Lewis, P.E.
 IL Licensed Professional Engineer
 No. 0062-038880





Location Map

NOTE:

Traffic Control Devices for township road closures during construction shall be in Accordance with IDOT Standard 702001 and approved by Danny Lock, Joshua Township road commissioner. (309-338-2276)

Summary of Quantities

#	Item	Section	Quantity	Unit	Rates/Remarks
1	Special Clearing	201	1	L.S.	
2	Mine Refuse Excavation	202	33,135	C.Y.	
3	Stone Riprap A-3	IDOT 281	897	Ton	
4	Stone Riprap CA-1	IDOT 281	41.7	Ton	
5	Pipe Culvert 30" Dia., Corrugated PE with Smooth Interior, Type 1	IDOT 542	40	Foot	
6	Pipe Culvert 36" Dia., Corrugated PE with Smooth Interior, Type 1	IDOT 542	44	Foot	
7	Mobilization (Max. 6% of Bid)	671	1	L.S.	
8	Traffic Control and Protection - Standard 702001	701	1	L.S.	Type III Barricade

GENERAL NOTES

The contractor is responsible for visiting the site and familiarizing himself with the existing conditions and the proposed reclamation work prior to submitting a bid.

The contractor shall provide and pay for all field engineering services to execute the project as specified in the Field Engineering section of the Special Provisions.

The contractor is responsible for locating and protecting all existing utility lines pertaining to the work.

Unless noted on the plans, all onsite access roads may be used for construction and must be maintained during construction and restored to original or better condition at the completion of work by the contractor. Access roads to the site as designated in the plans are to be maintained to the satisfaction of the engineer.

The construction limits will be staked by the contractor prior to construction. The contractor is responsible for the repair and or restitution at his own expense for all damages done to any area outside the construction limits.

CONSTRUCTION NOTES

BURIAL/REMOVAL OF MATERIAL—Concrete and masonry debris designated for burial by the engineer shall be buried at least three feet below proposed final grade. Onsite organic debris and trash shall be disposed of in an engineer approved offsite landfill in accordance with Sections 201 and 501 of the Special Provisions.

TREE REMOVAL—Trees removed shall be disposed of onsite per Section 201 of the Special Provisions.

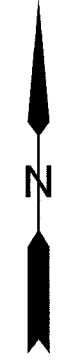
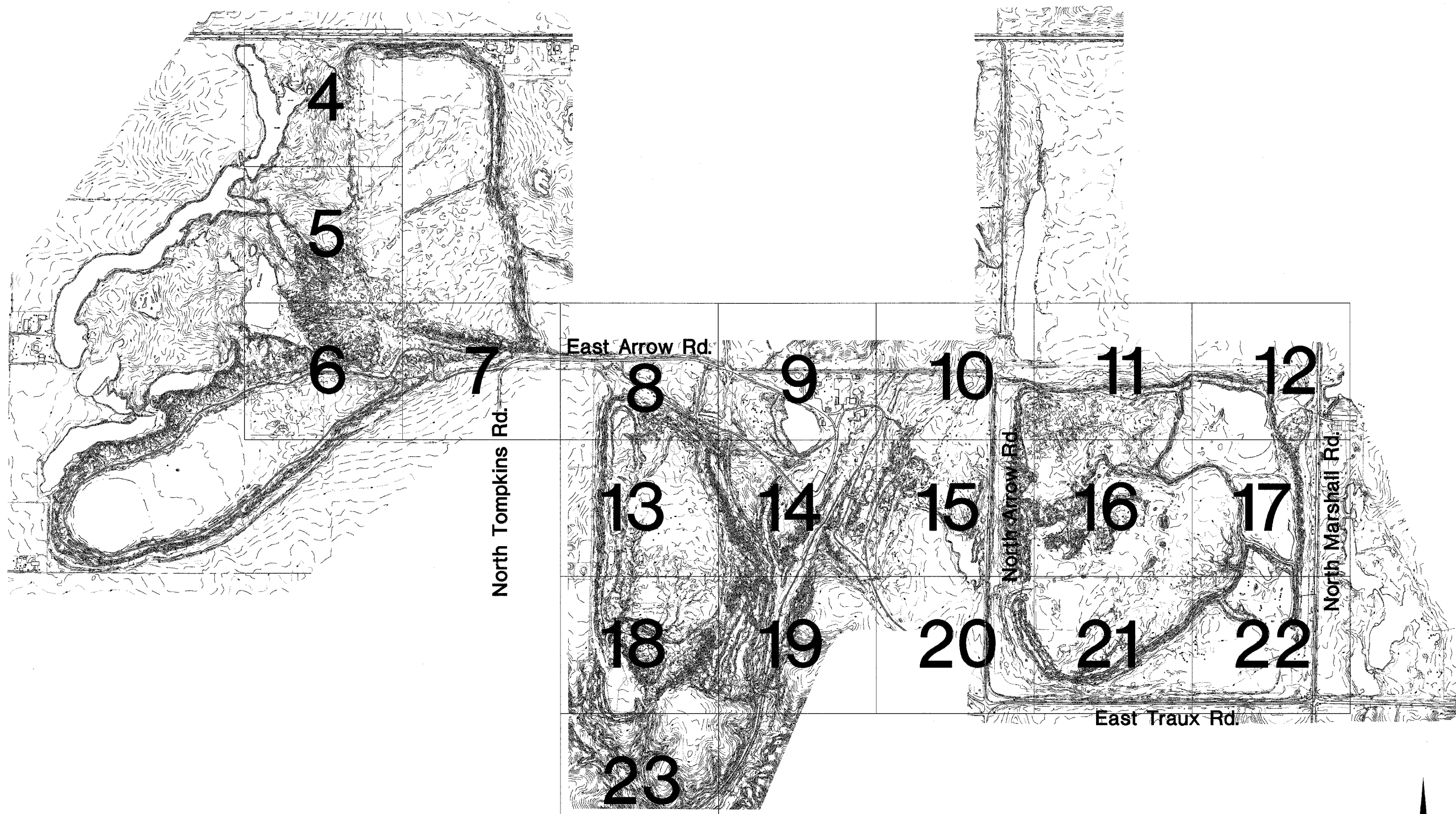
EROSION CONTROL—The contractor shall schedule his operations and take such precautions that may be necessary to prevent or minimize erosion. Failure to comply with this requirement shall cause the contractor to be fully responsible for repairing any eroded areas and cleaning up areas or drainage structures that have become silted in or damaged.

State of Illinois
Department of Natural Resources

Red Ember - Sediment Control
Reclamation Project
AML-GFuE-0406
Fulton County

Drawn By: T.M.
Checked By: _____
Date: 06/30/05

Summary of Quantities/
General Notes/Location Map
Sheet
2 of 24



Drawn By: J.M. _____ Date: 07/07/05
 Checked By: _____

Red Ember - Sediment Control
 Reclamation Project
 AML-GFuE-0406
 Fulton County



4						
5						
6	7	8	9	10	11	12
		13	14	15	16	17
		18	19	20	21	22
		23				

Sheet Layout

- 680 --- EXISTING CONTOUR
- 690 --- PROPOSED CONTOUR
- - - - - CONSTRUCTION LIMITS
- — — — — EDGE OF ROAD
- ~~~~~ TREELINE
- - - - - EDGE OF WATER
- ⊕ SURVEY CONTROL POINT

Legend

**Red Ember -
Sediment Control**

N

0 50 100
SCALE IN FEET

Drawn By: V.P., M.-LF Date: 7/6/2005

Checked By: _____

SEE SHEET 5

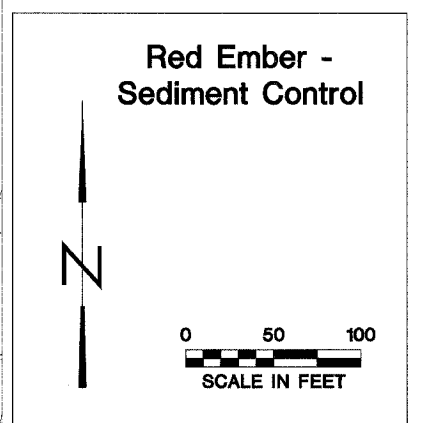


4						
5						
6	7	8	9	10	11	12
		13	14	15	16	17
		18	19	20	21	22
		23				

Sheet Layout

- 680 --- EXISTING CONTOUR
- 690 --- PROPOSED CONTOUR
- - - - - CONSTRUCTION LIMITS
- — — — — EDGE OF ROAD
- ~~~~~ TREELINE
- - - - - EDGE OF WATER
- ⊕ SURVEY CONTROL POINT

Legend



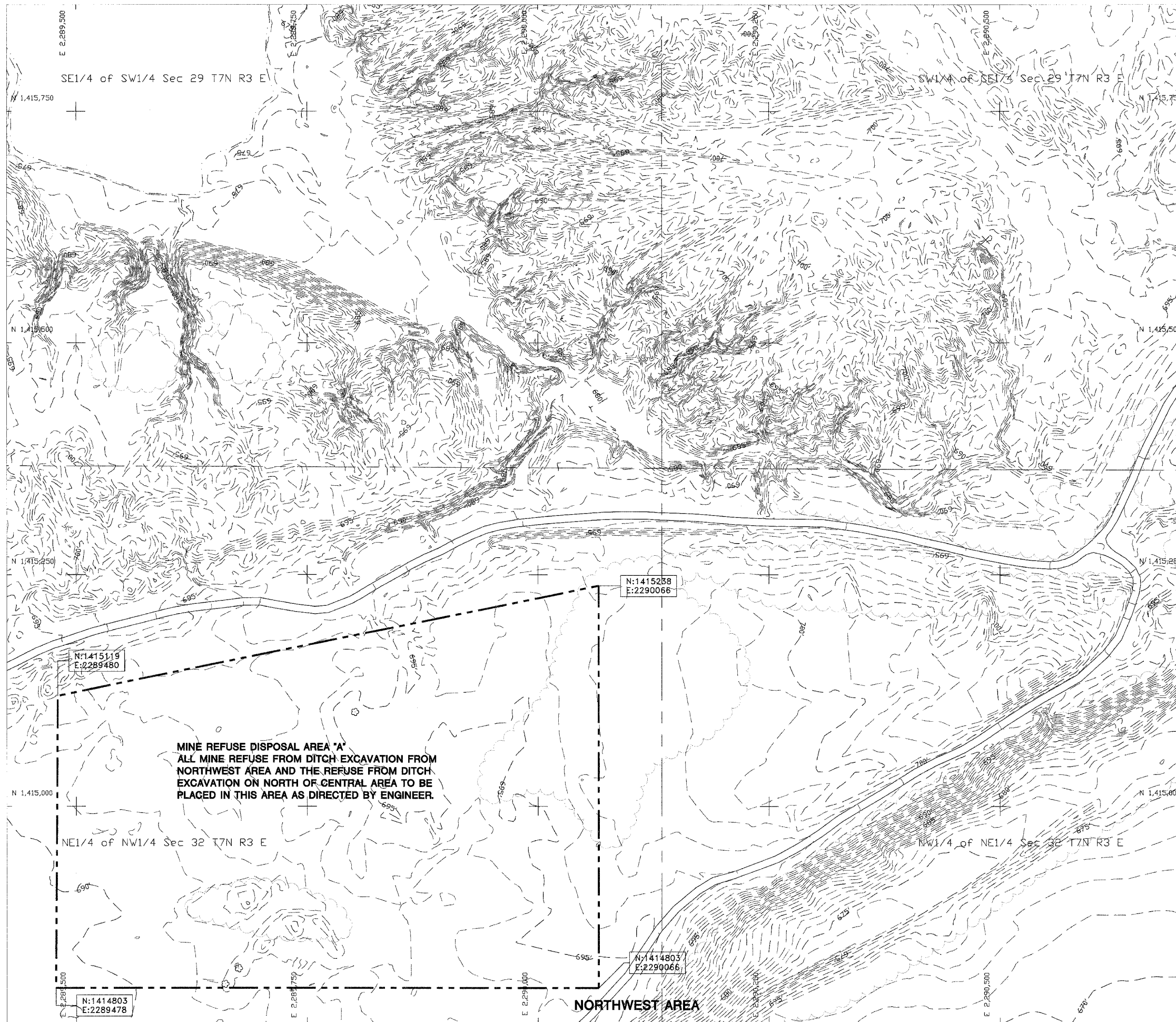
State of Illinois
Department of Natural Resources

Red Ember - Sediment Control
Reclamation Project
AML-GFuE-0406
Fulton County

Drawn By: _____ Date: 7/7/2005

Checked By: _____

Existing & Proposed
Conditions
Sheet
5 of 24



SEE SHEET 7

4						
5						
6	7	8	9	10	11	12
		13	14	15	16	17
		18	19	20	21	22
		23				

Sheet Layout

- 680 --- EXISTING CONTOUR
- 690 --- PROPOSED CONTOUR
- - - - - CONSTRUCTION LIMITS
- — — — — EDGE OF ROAD
- ~~~~~ TREELINE
- - - - - EDGE OF WATER
- ⊕ SURVEY CONTROL POINT

Legend

**Red Ember -
Sediment Control**

N

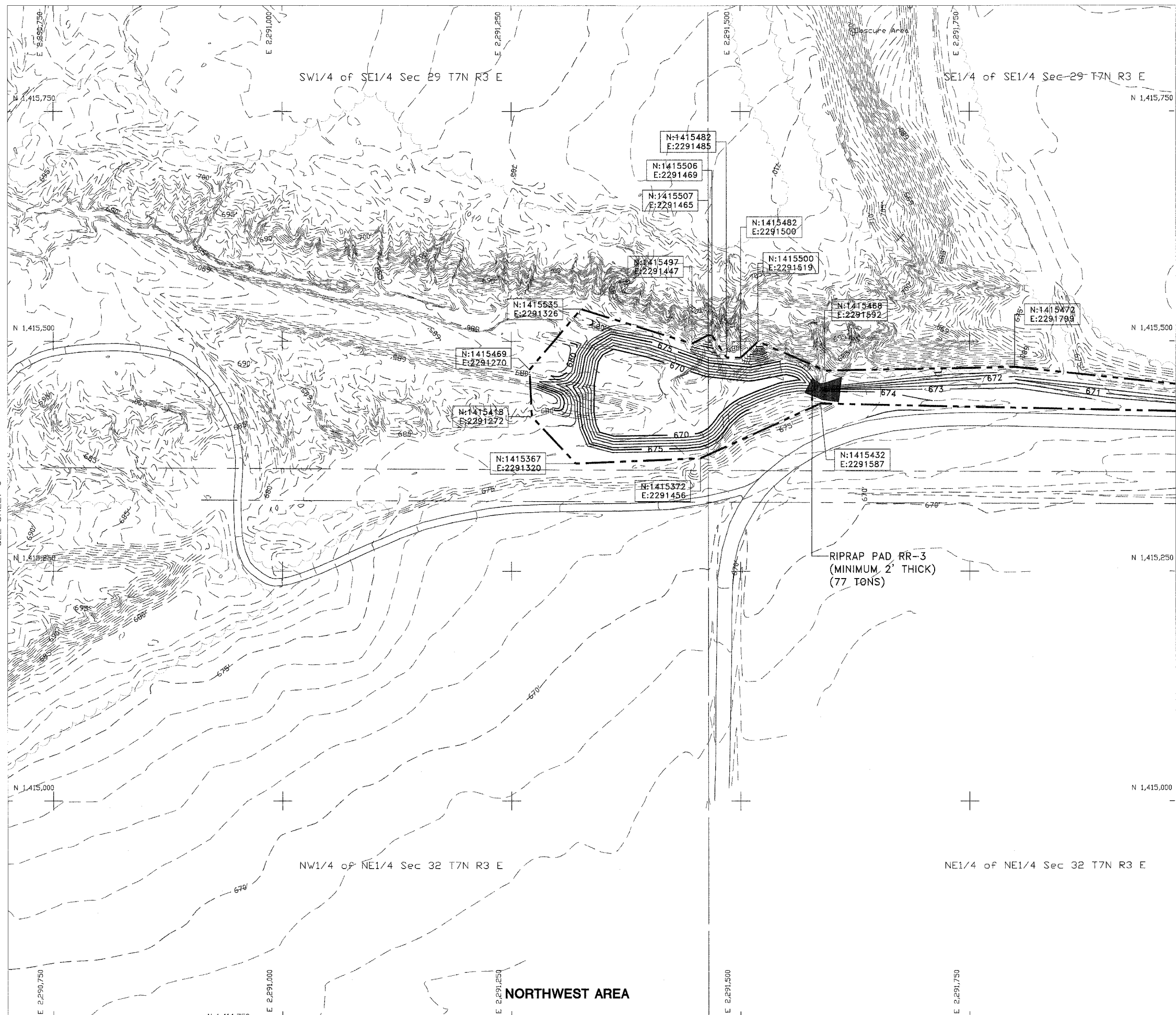
0 50 100
SCALE IN FEET

State of Illinois
Department of Natural Resources

Red Ember - Sediment Control
Reclamation Project
AML-GFuE-0406
Fulton County

Drawn By: V.P., M-LF Date: 7/7/2005
Checked By: _____

Existing & Proposed
Conditions
Sheet
6 of 24



SEE SHEET 8

SEE SHEET 6

4						
5						
6	7	8	9	10	11	12
		13	14	15	16	17
		18	19	20	21	22
		23				

Sheet Layout

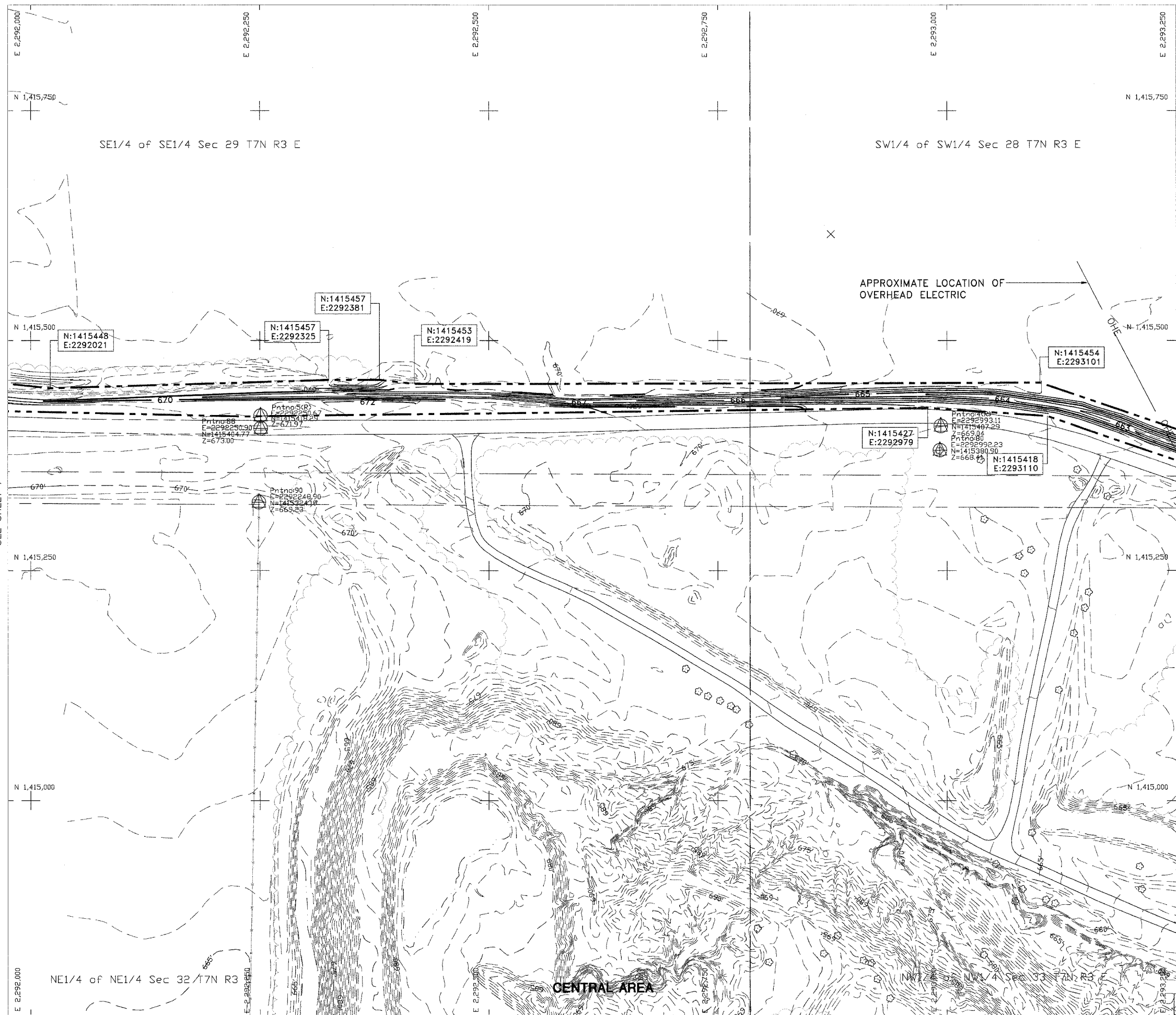
- 680 EXISTING CONTOUR
- 690 PROPOSED CONTOUR
- CONSTRUCTION LIMITS
- EDGE OF ROAD
- TREELINE
- EDGE OF WATER
- SURVEY CONTROL POINT

Legend

**Red Ember -
Sediment Control**

SCALE IN FEET

Drawn By: V.P., M-LF Date: 7/7/2005
Checked By:



SEE SHEET 9

4						
5						
6	7	8	9	10	11	12
		13	14	15	16	17
		18	19	20	21	22
		23				

Sheet Layout

- 680 --- EXISTING CONTOUR
- 690 --- PROPOSED CONTOUR
- --- CONSTRUCTION LIMITS
- --- EDGE OF ROAD
- --- TREELINE
- --- EDGE OF WATER
- ⊕ SURVEY CONTROL POINT

Legend

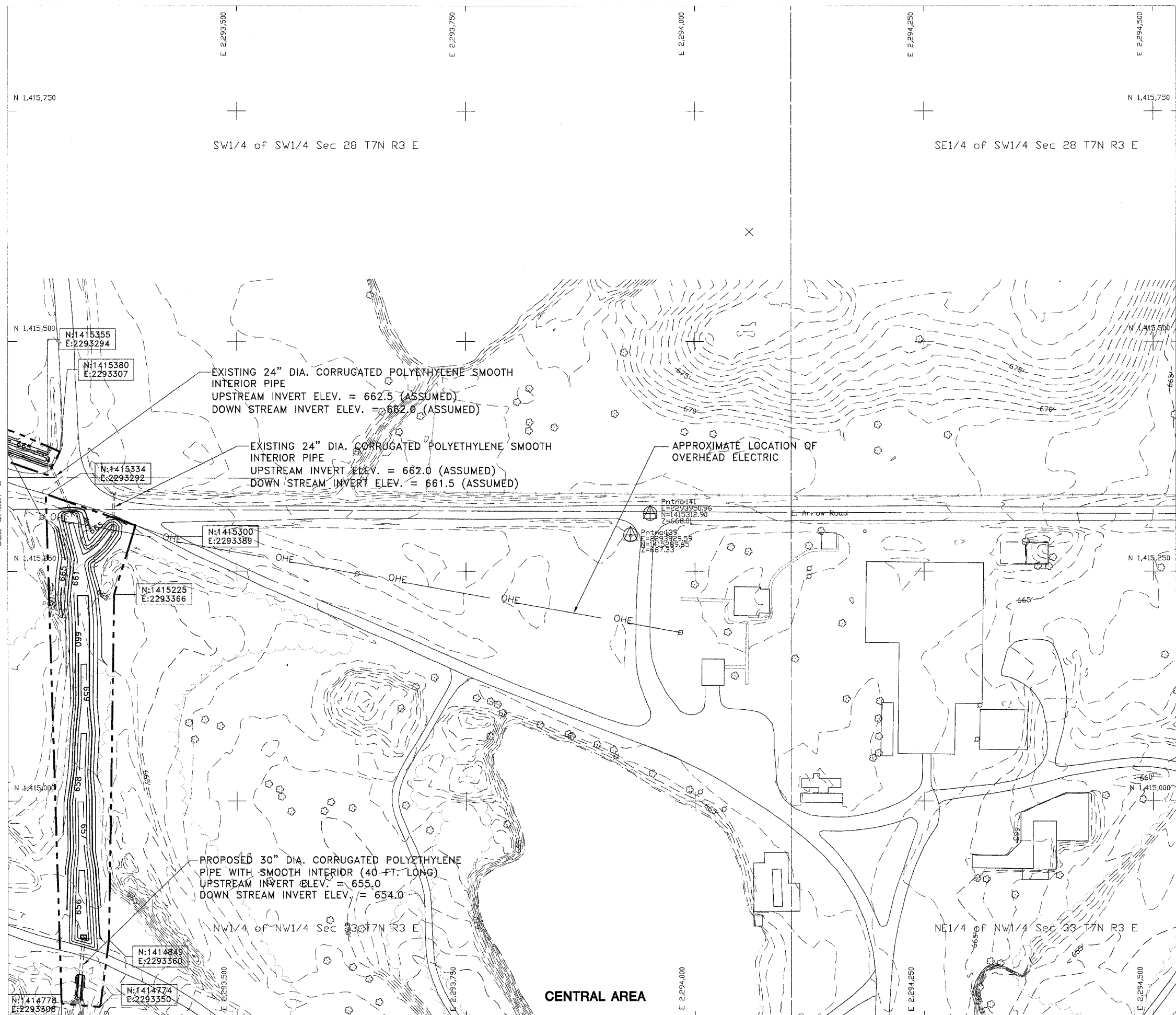
Red Ember - Sediment Control

SCALE IN FEET

Drawn By: V.P., M-LF Date: 7/7/2005
Checked By: _____

SEE SHEET 7

SEE SHEET 13



SEE SHEET 10

SEE SHEET 8

4						
5						
6	7	8	9	10	11	12
		13	14	15	16	17
		18	19	20	21	22
		23				

Sheet Layout

- 680 --- EXISTING CONTOUR
- 690 --- PROPOSED CONTOUR
- --- CONSTRUCTION LIMITS
- --- EDGE OF ROAD
- --- TREELINE
- --- EDGE OF WATER
- ⊙ SURVEY CONTROL POINT

Legend

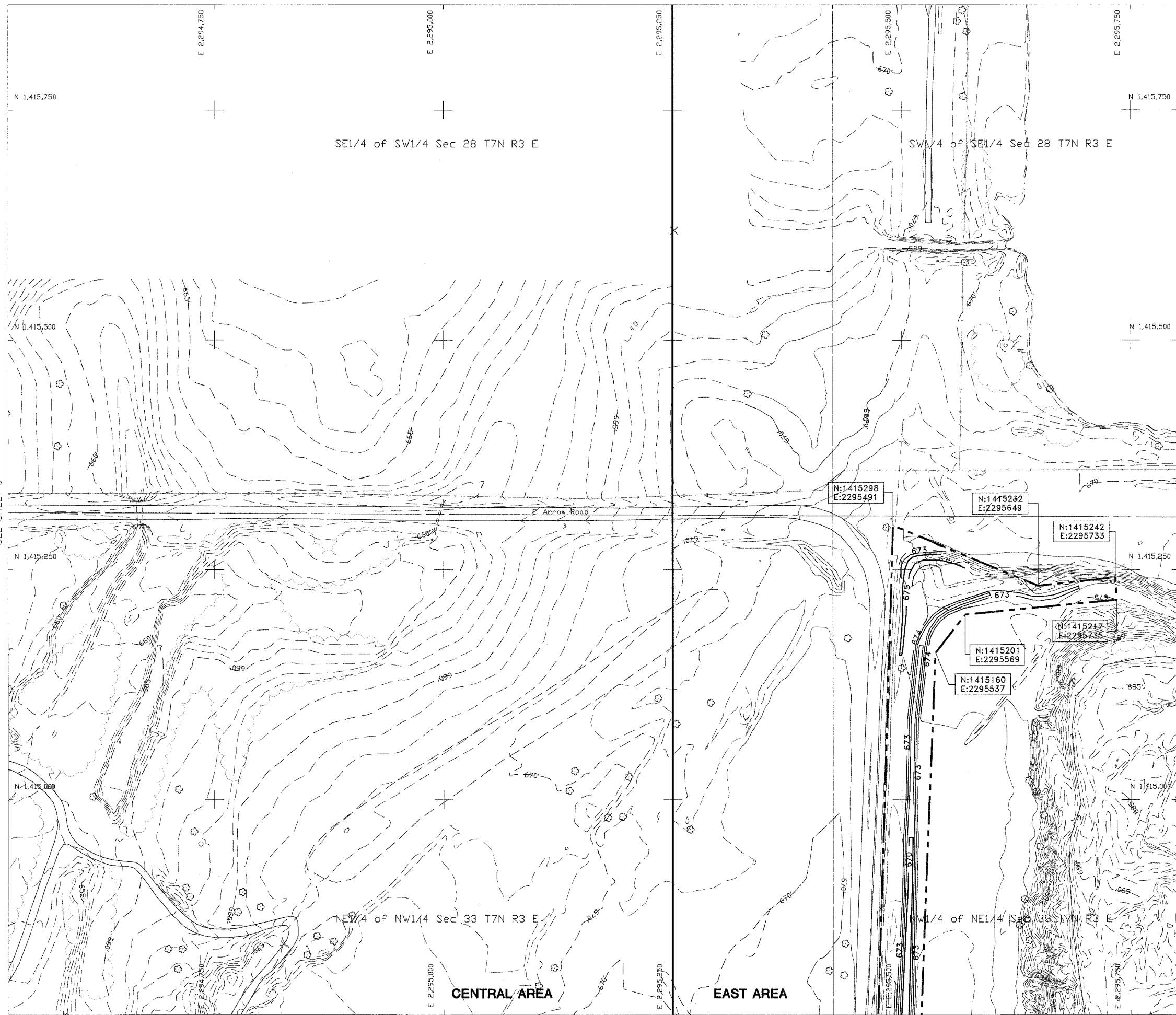
Red Ember - Sediment Control

SCALE IN FEET

Drawn By: V.P., M-LF Date: 7/7/2005
Checked By:

CENTRAL AREA

SEE SHEET 14



SEE SHEET 9

SEE SHEET 11

4						
5						
6	7	8	9	10	11	12
		13	14	15	16	17
		18	19	20	21	22
		23				

Sheet Layout

- 680 EXISTING CONTOUR
- 690 PROPOSED CONTOUR
- CONSTRUCTION LIMITS
- EDGE OF ROAD
- TREELINE
- EDGE OF WATER
- SURVEY CONTROL POINT

Legend

**Red Ember -
Sediment Control**

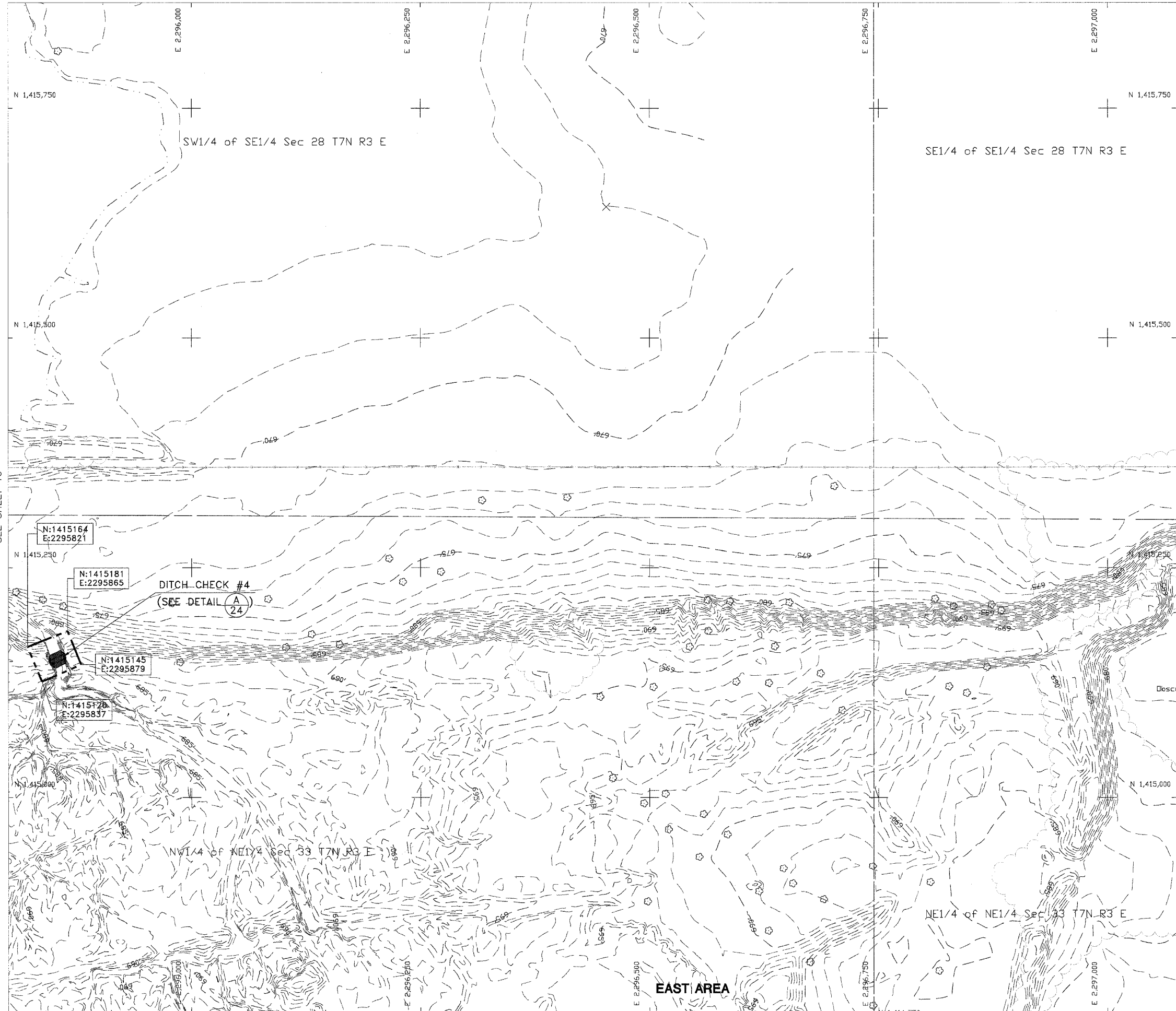
SCALE IN FEET

State of Illinois
Department of Natural Resources

Red Ember - Sediment Control
Reclamation Project
AML-GFuE-0406
Fulton County

Drawn By: V.P., M-LF Date: 7/7/2005
Checked By:

Existing & Proposed
Conditions
Sheet
10 of 24



SEE SHEET 10

SEE SHEET 12

SEE SHEET 16

4						
5						
6	7	8	9	10	11	12
		13	14	15	16	17
		18	19	20	21	22
		23				

Sheet Layout

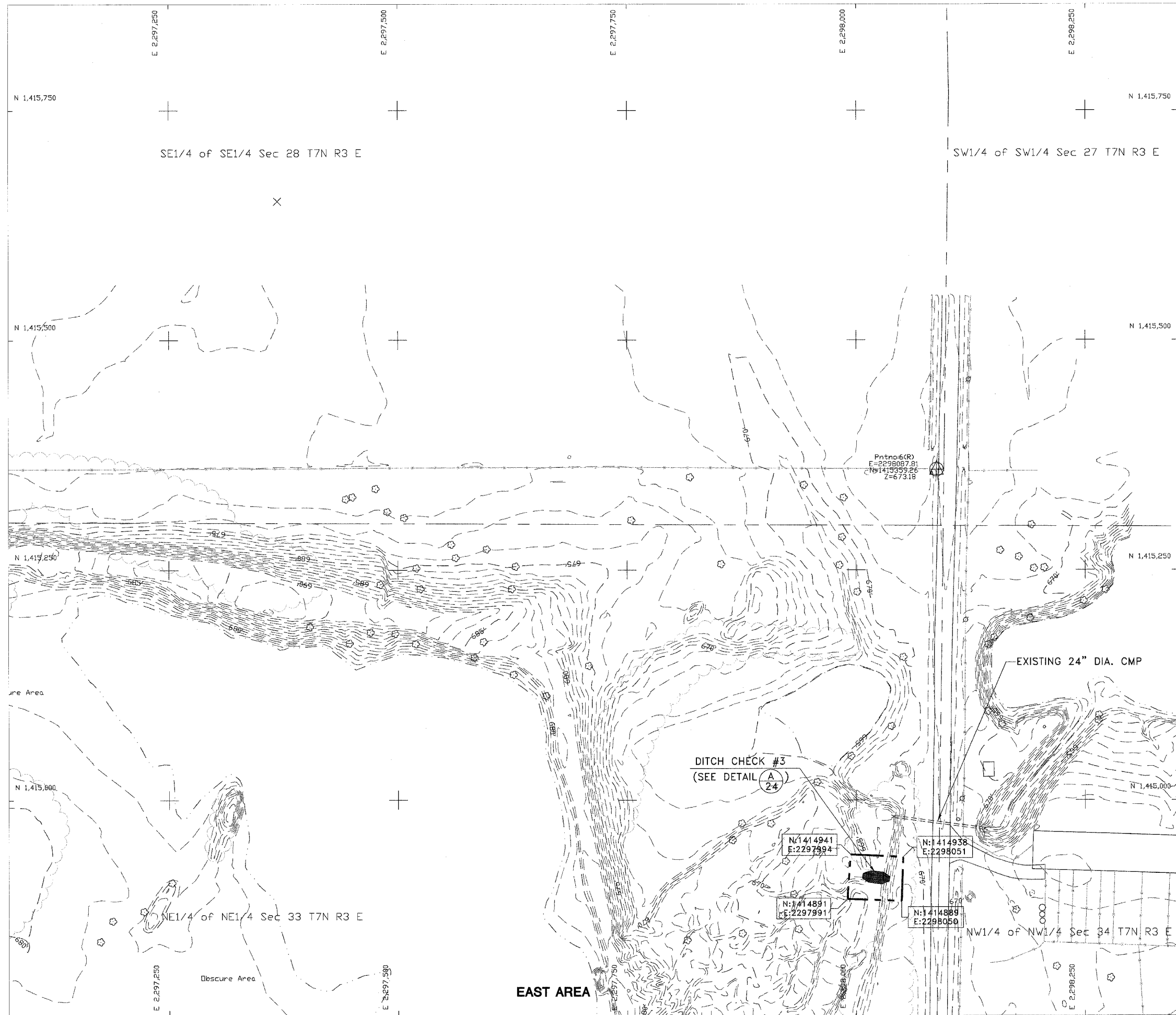
- 680 EXISTING CONTOUR
- 690 PROPOSED CONTOUR
- CONSTRUCTION LIMITS
- EDGE OF ROAD
- TREELINE
- EDGE OF WATER
- SURVEY CONTROL POINT

Legend

**Red Ember -
Sediment Control**

SCALE IN FEET

Drawn By: V.P., M-LF Date: 7/7/2005
Checked By:



4						
5						
6	7	8	9	10	11 (12)	
		13	14	15	16	17
		18	19	20	21	22
		23				

Sheet Layout

- 680 EXISTING CONTOUR
- 690 PROPOSED CONTOUR
- CONSTRUCTION LIMITS
- EDGE OF ROAD
- TREELINE
- EDGE OF WATER
- SURVEY CONTROL POINT

Legend

**Red Ember -
Sediment Control**

SCALE IN FEET

State of Illinois
Department of Natural Resources

Red Ember - Sediment Control
Reclamation Project
AML-GFuE-0406
Fulton County

Drawn By: _____ Date: 7/7/2005
Checked By: _____

Existing & Proposed
Conditions
Sheet
12 of 24

SEE SHEET 11

SEE SHEET 17



SEE SHEET 14

4						
5						
6	7	8	9	10	11	12
		13	14	15	16	17
		18	19	20	21	22
		23				

Sheet Layout

- 680 EXISTING CONTOUR
- 690 PROPOSED CONTOUR
- CONSTRUCTION LIMITS
- EDGE OF ROAD
- TREELINE
- EDGE OF WATER
- SURVEY CONTROL POINT

Legend

**Red Ember -
Sediment Control**

SCALE IN FEET

State of Illinois
Department of Natural Resources

Red Ember - Sediment Control
Reclamation Project
AML-GFuE-0406
Fulton County

Drawn By: _____ Date: 7/7/2005

V.P., M-LF _____

Checked By: _____

Existing & Proposed
Conditions

Sheet
13 of 24



SEE SHEET 13

SEE SHEET 15

4						
5						
6	7	8	9	10	11	12
		13	14	15	16	17
		18	19	20	21	22
		23				

Sheet Layout

- 680 --- EXISTING CONTOUR
- 690 --- PROPOSED CONTOUR
- --- CONSTRUCTION LIMITS
- --- EDGE OF ROAD
- --- TREELINE
- --- EDGE OF WATER
- ⊙ SURVEY CONTROL POINT

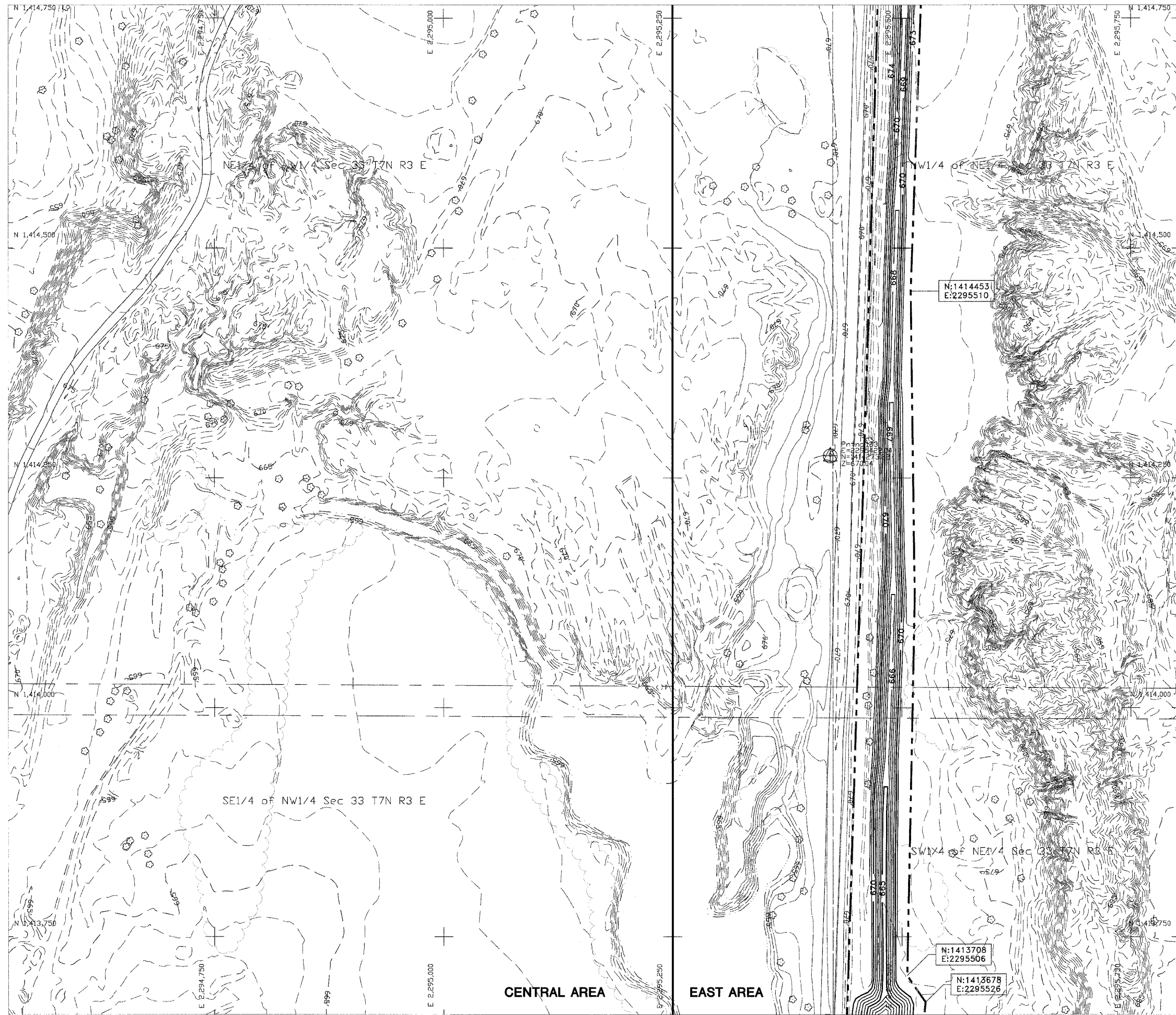
Legend

**Red Ember -
Sediment Control**

N

0 50 100
SCALE IN FEET

Drawn By: V.P., M-LF Date: 7/7/2005
Checked By:



SEE SHEET 14

SEE SHEET 16

4						
5						
6	7	8	9	10	11	12
		13	14	15	16	17
		18	19	20	21	22
		23				

Sheet Layout

- 680 --- EXISTING CONTOUR
- 690 --- PROPOSED CONTOUR
- --- CONSTRUCTION LIMITS
- --- EDGE OF ROAD
- --- TREELINE
- --- EDGE OF WATER
- ⊕ SURVEY CONTROL POINT

Legend

**Red Ember -
Sediment Control**

SCALE IN FEET

Drawn By: V.P., M-LF Date: 7/7/2005
Checked By: _____

SEE SHEET 11



SEE SHEET 15

SEE SHEET 17

SEE SHEET 21

4						
5						
6	7	8	9	10	11	12
		13	14	15	16	17
		18	19	20	21	22
		23				

Sheet Layout

- 680 --- EXISTING CONTOUR
- 690 --- PROPOSED CONTOUR
- - - - - CONSTRUCTION LIMITS
- — — — — EDGE OF ROAD
- ~~~~~ TREELINE
- - - - - EDGE OF WATER
- ⊕ SURVEY CONTROL POINT

Legend

**Red Ember -
Sediment Control**

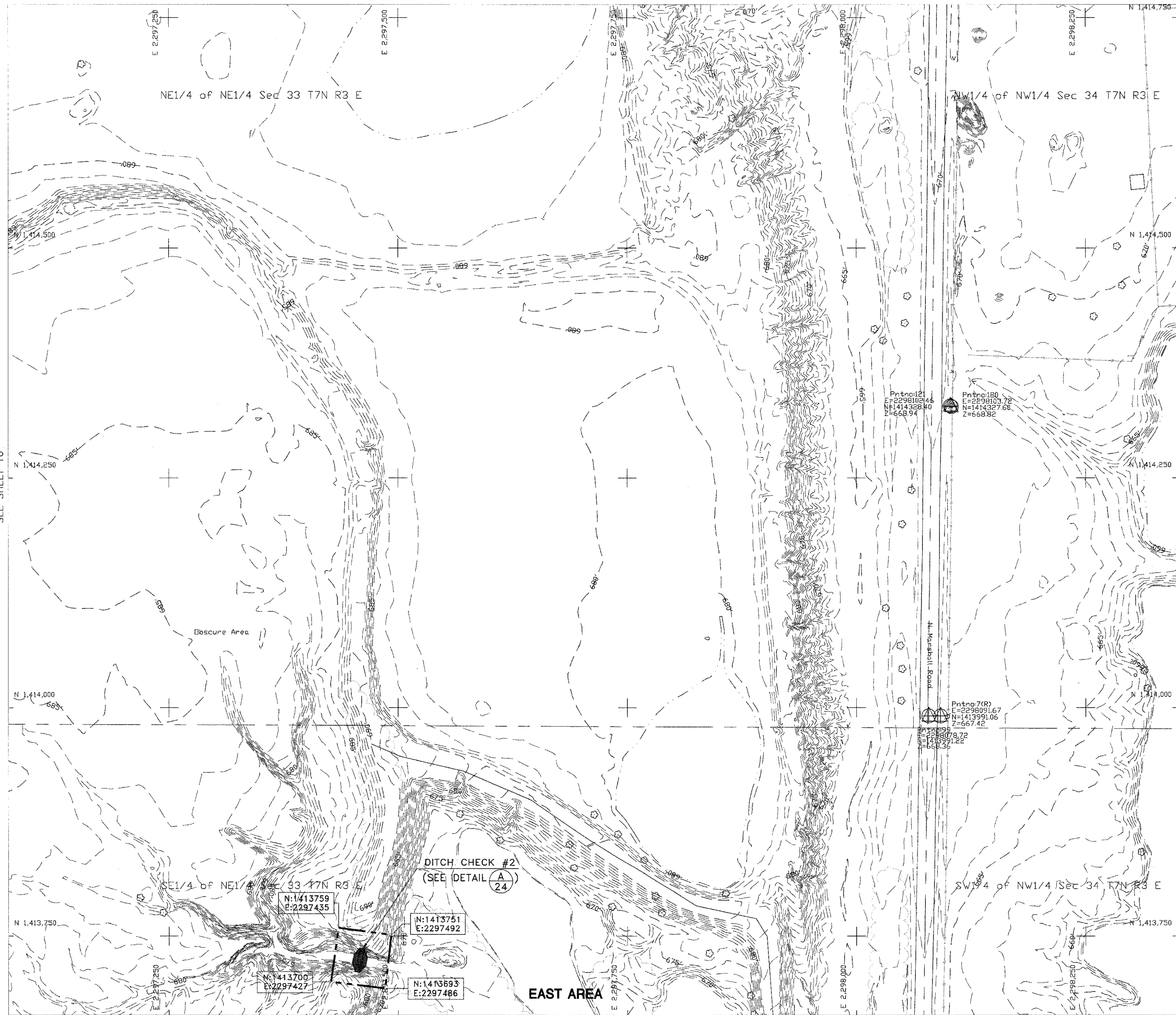
SCALE IN FEET

State of Illinois
Department of Natural Resources

Red Ember - Sediment Control
Reclamation Project
AML-GFuE-0406
Fulton County

Drawn By: V.P., M-LF Date: 7/7/2005
Checked By: _____

Existing & Proposed
Conditions
Sheet
16 of 24



SEE SHEET 16

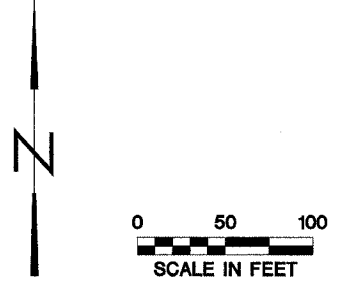
4						
5						
6	7	8	9	10	11	12
			13	14	15	16
			18	19	20	21
			23			
					17	
					22	

Sheet Layout

- 680 --- EXISTING CONTOUR
- 690 --- PROPOSED CONTOUR
- - - - - CONSTRUCTION LIMITS
- — — — — EDGE OF ROAD
- ~~~~~ TREELINE
- - - - - EDGE OF WATER
- ⊕ SURVEY CONTROL POINT

Legend

Red Ember - Sediment Control



State of Illinois
Department of Natural Resources

Red Ember - Sediment Control
Reclamation Project
AML-GFuE-0406
Fulton County

Drawn By: V.P., M-LF
Checked By: _____
Date: 7/7/2005

Existing & Proposed
Conditions
Sheet
17 of 24



SEE SHEET 19

4						
5						
6	7	8	9	10	11	12
		13	14	15	16	17
		18	19	20	21	22
		23				

Sheet Layout

- 680 --- EXISTING CONTOUR
- 690 --- PROPOSED CONTOUR
- - - - - CONSTRUCTION LIMITS
- — — — — EDGE OF ROAD
- ~~~~~ TREELINE
- - - - - EDGE OF WATER
- ⊙ SURVEY CONTROL POINT

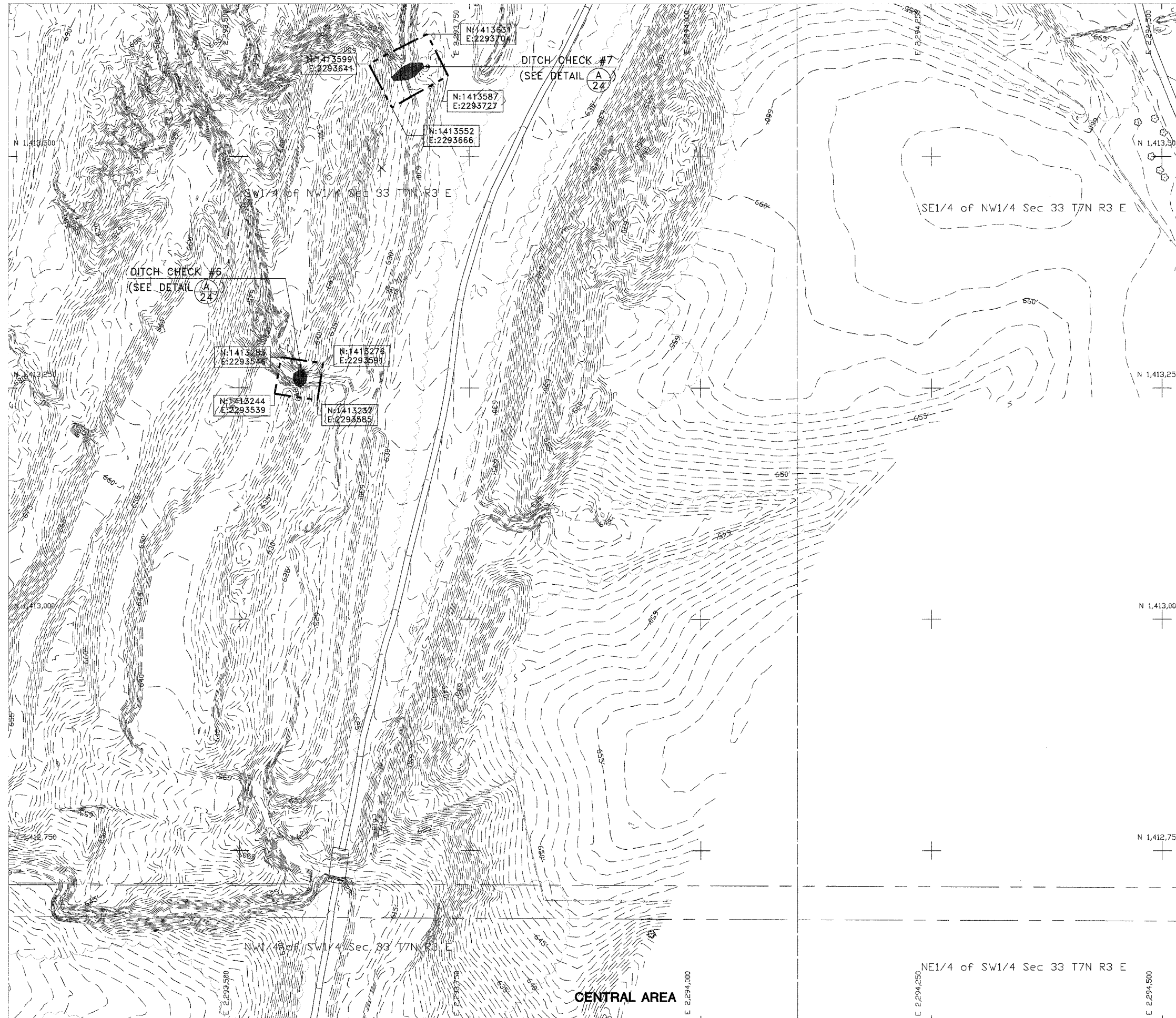
Legend

Red Ember - Sediment Control

SCALE IN FEET

Drawn By: _____ Date: 7/7/2005

Checked By: _____



SEE SHEET 18

SEE SHEET 20

4						
5						
6	7	8	9	10	11	12
		13	14	15	16	17
		18	19	20	21	22
		23				

Sheet Layout

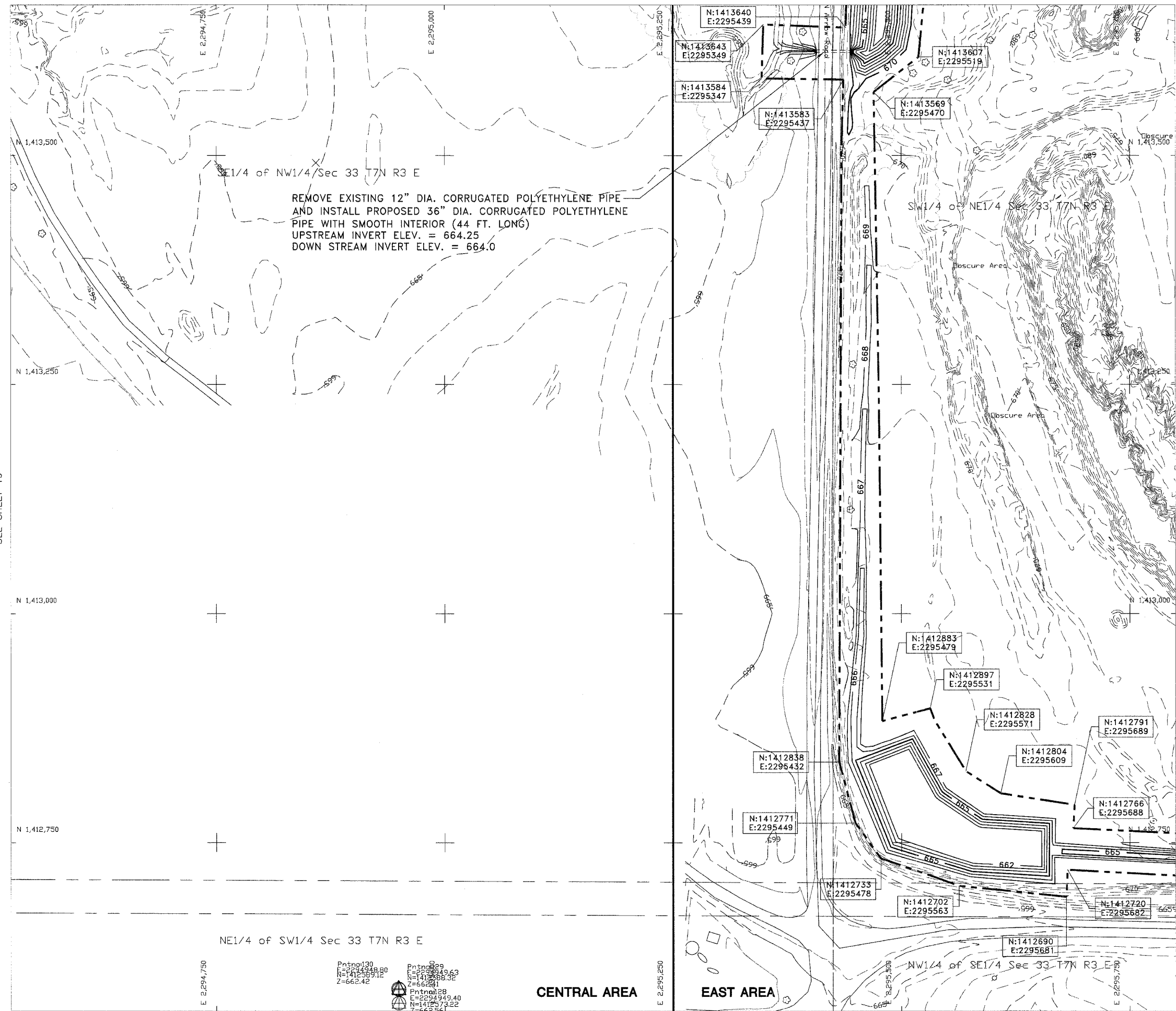
- 680 EXISTING CONTOUR
- 690 PROPOSED CONTOUR
- CONSTRUCTION LIMITS
- EDGE OF ROAD
- TREELINE
- EDGE OF WATER
- SURVEY CONTROL POINT

Legend

**Red Ember -
Sediment Control**

SCALE IN FEET

Drawn By: V.P., M-LF Date: 7/8/2005
Checked By:



SEE SHEET 19

SEE SHEET 21

4						
5						
6	7	8	9	10	11	12
		13	14	15	16	17
		18	19	20	21	22
		23				

Sheet Layout

- 680 EXISTING CONTOUR
- 690 PROPOSED CONTOUR
- CONSTRUCTION LIMITS
- EDGE OF ROAD
- TREELINE
- EDGE OF WATER
- SURVEY CONTROL POINT

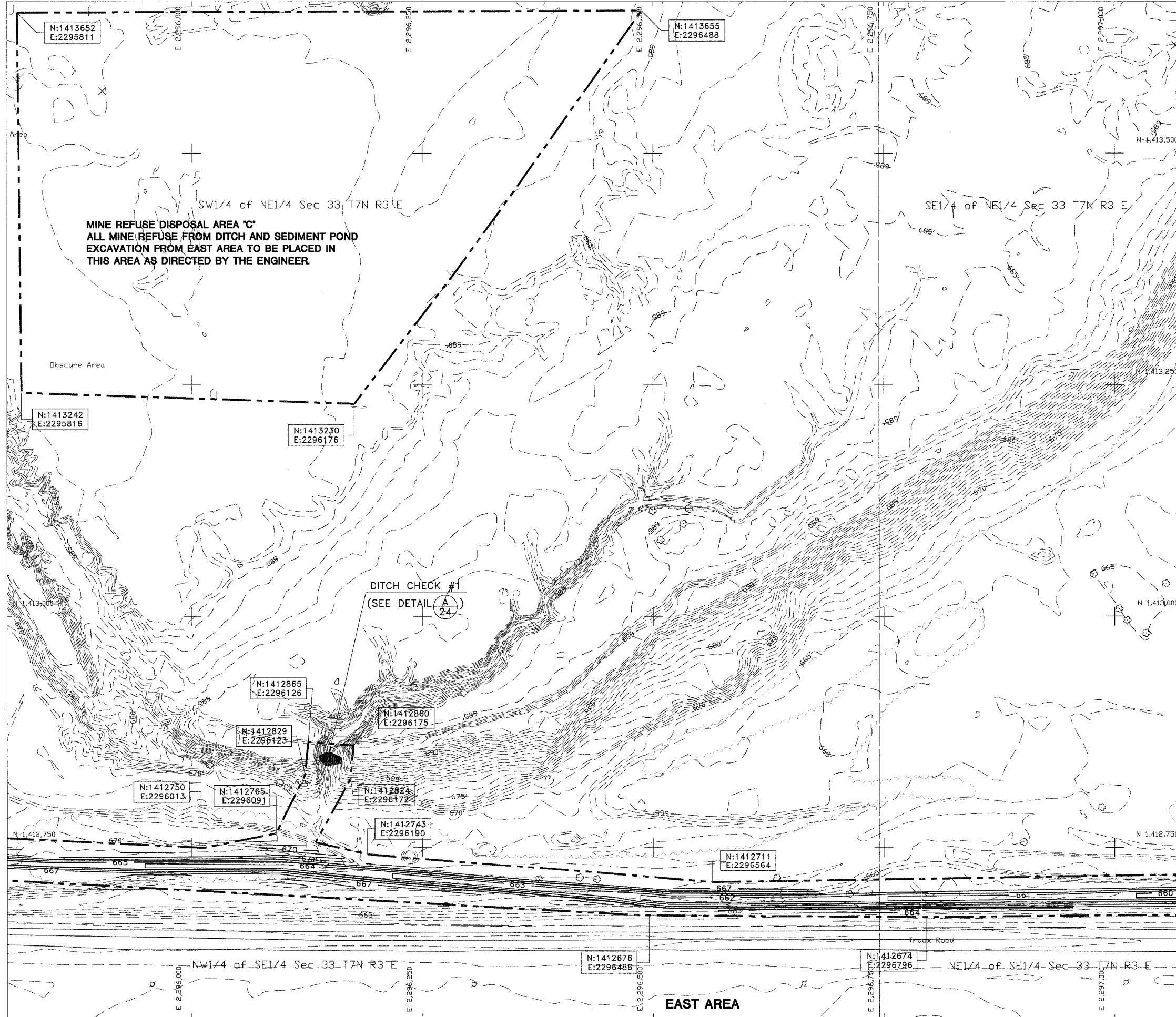
Legend

**Red Ember -
Sediment Control**

SCALE IN FEET

Drawn By: _____ Date: 7/8/2005
V.P., M-LF
Checked By: _____

SEE SHEET 16



SEE SHEET 20

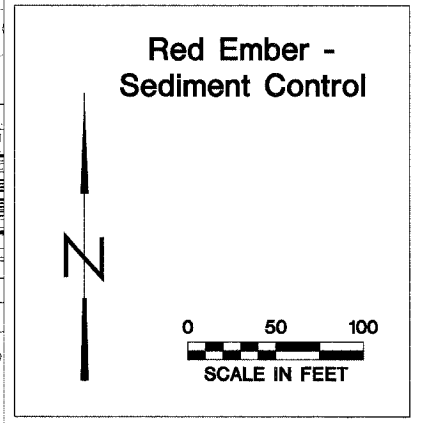
SEE SHEET 22

4						
5						
6	7	8	9	10	11	12
		13	14	15	16	17
		18	19	20	21	22
		23				

Sheet Layout

- 680 — EXISTING CONTOUR
- 690 — PROPOSED CONTOUR
- - - CONSTRUCTION LIMITS
- — — EDGE OF ROAD
- ~~~~~ TREELINE
- - - EDGE OF WATER
- ⊕ SURVEY CONTROL POINT

Legend



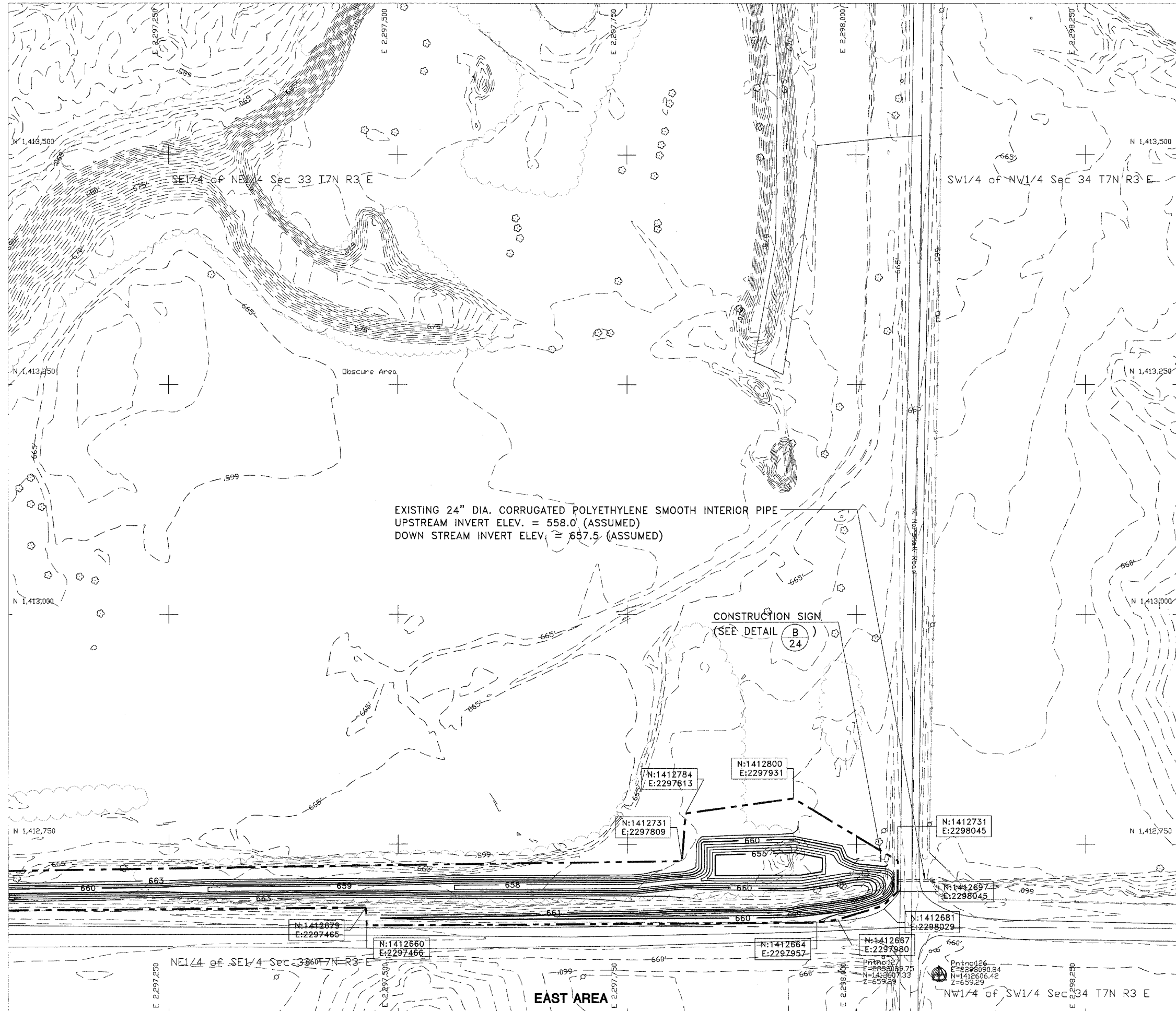
State of Illinois
Department of Natural Resources

Red Ember - Sediment Control
Reclamation Project
AML-GFuE-0406
Fulton County

Drawn By: V.P., M-LF
Checked By: _____
Date: 7/8/2005

Existing & Proposed
Conditions
Sheet
21 of 24

SEE SHEET 17



EXISTING 24" DIA. CORRUGATED POLYETHYLENE SMOOTH INTERIOR PIPE
 UPSTREAM INVERT ELEV. = 558.0 (ASSUMED)
 DOWN STREAM INVERT ELEV. = 657.5 (ASSUMED)

CONSTRUCTION SIGN
 (SEE DETAIL B)
 24

4						
5						
6	7	8	9	10	11	12
		13	14	15	16	17
		18	19	20	21	22
		23				

Sheet Layout

- 680 --- EXISTING CONTOUR
- 690 --- PROPOSED CONTOUR
- - - - - CONSTRUCTION LIMITS
- — — — — EDGE OF ROAD
- ~~~~~ TREELINE
- - - - - EDGE OF WATER
- ⊕ SURVEY CONTROL POINT

Legend

Red Ember -
Sediment Control

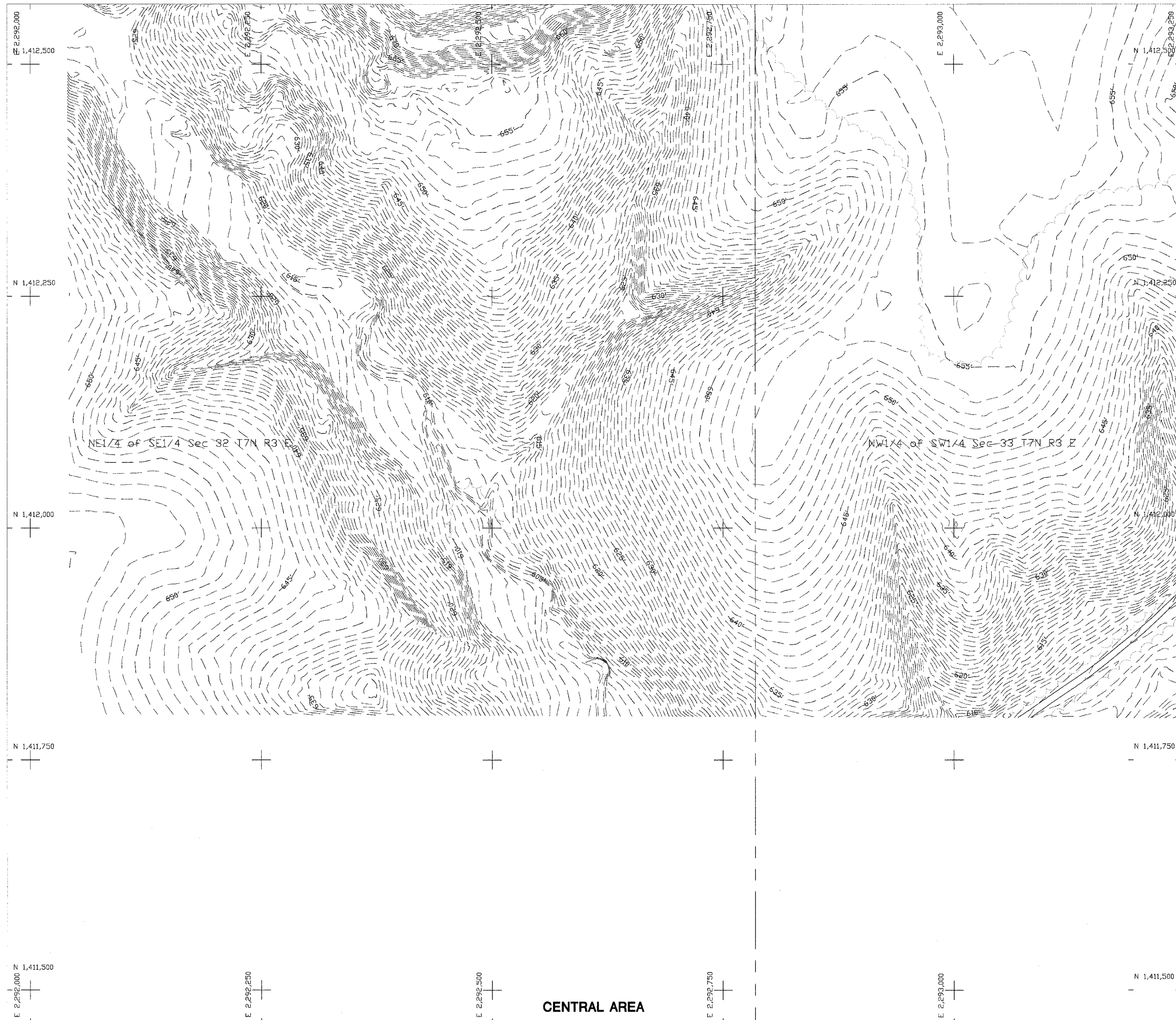


State of Illinois
Department of Natural Resources

Red Ember - Sediment Control
Reclamation Project
AML-GFuE-0406
Fulton County

Drawn By: _____ Date: 7/8/2005
 V.P., M-LF
 Checked By: _____

Existing & Proposed
Conditions
Sheet
22 of 24



4						
5						
6	7	8	9	10	11	12
		13	14	15	16	17
		18	19	20	21	22
		23				

Sheet Layout

- 680 EXISTING CONTOUR
- 690 PROPOSED CONTOUR
- CONSTRUCTION LIMITS
- EDGE OF ROAD
- TREELINE
- EDGE OF WATER
- SURVEY CONTROL POINT

Legend

**Red Ember -
Sediment Control**

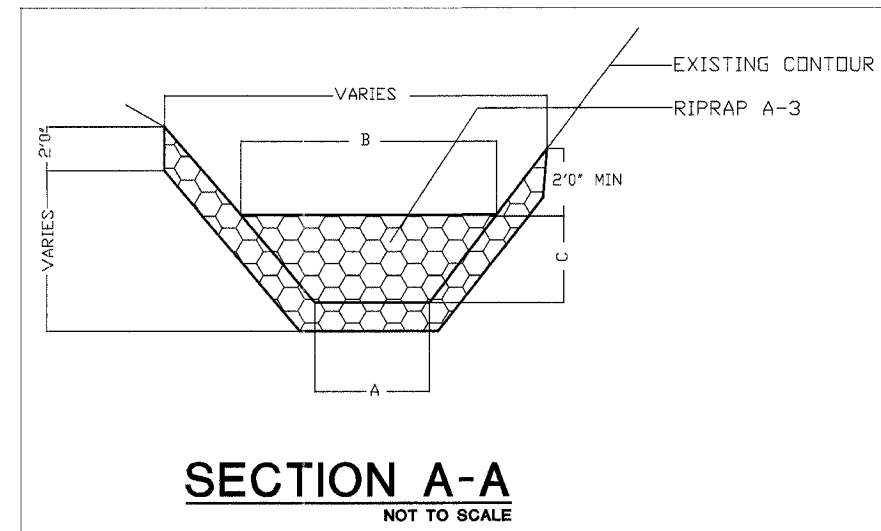
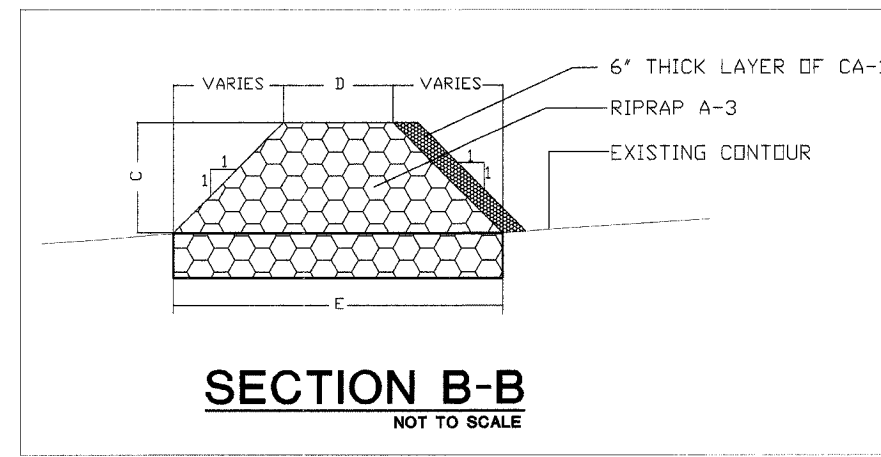
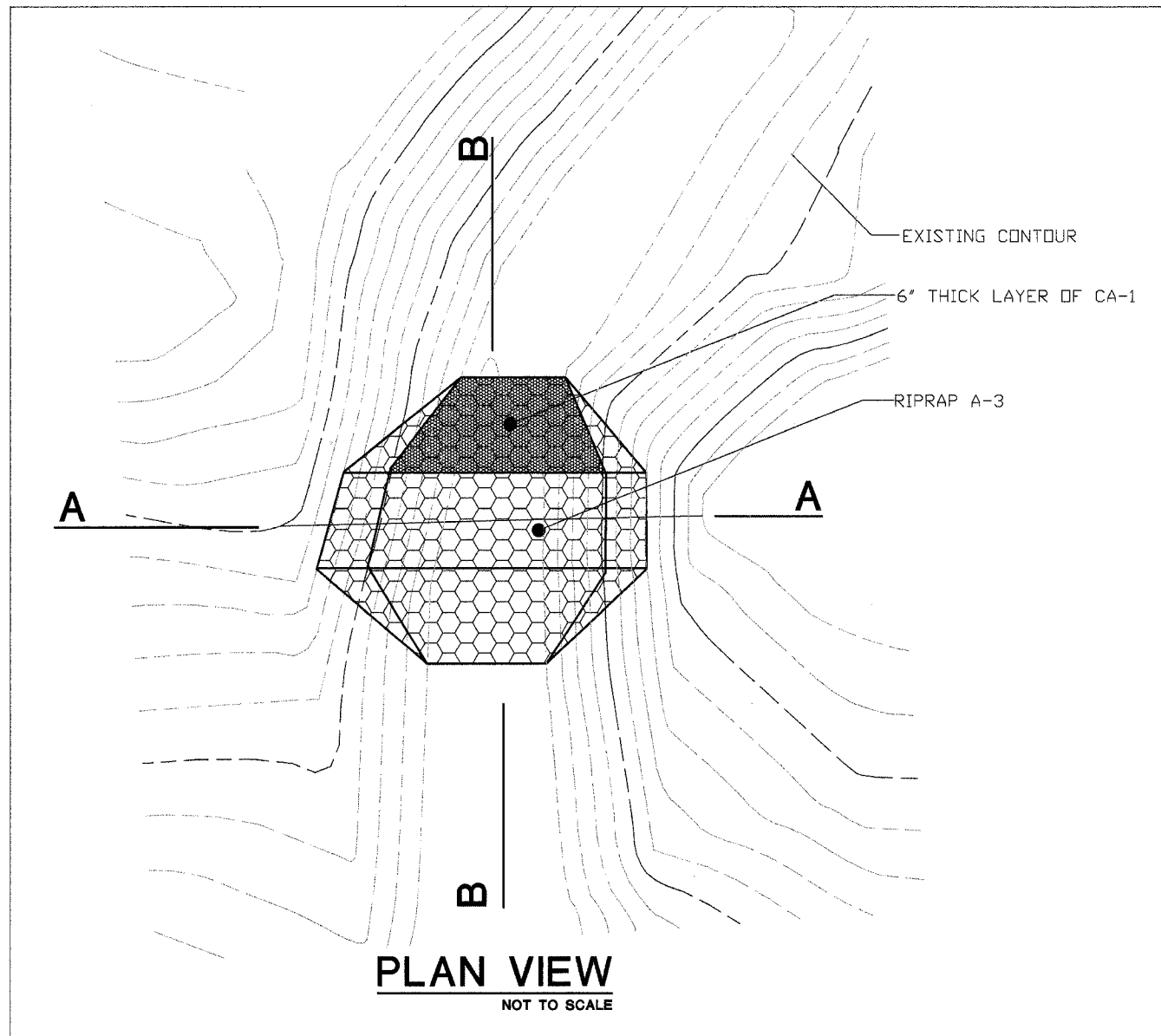
SCALE IN FEET

State of Illinois
Department of Natural Resources

Red Ember - Sediment Control
Reclamation Project
AML-GFuE-0406
Fulton County

Drawn By: _____ Date: 7/8/2005
V.P., M-LF
Checked By: _____

Existing & Proposed
Conditions
Sheet
23 of 24



A
24
RIPRAP DITCH CHECK DETAIL
NOT TO SCALE

DITCH CHECK #	DIMENSIONS					REQUIRED RR-3 (TONS)	REQUIRED CA-1 (TONS)
	A	B	C	D	E		
1	2'	12'	5'	5'	15'	48	1.7
2	10'	20'	5'	5'	15'	76	3.6
3	14'	30'	3'	5'	11'	65	4.4
4	13'	16'	5'	5'	15'	69	3.3
5	4'	15'	3'	5'	11'	42	1.9
6	6'	13'	5'	5'	15'	49	2.2
7	8'	25'	4'	5'	13'	82	4.2
8	9'	17'	5'	5'	15'	66	3.1
9	6'	56'	3'	5'	11'	122	8.6
10	8'	16'	5'	5'	15'	61	2.7
11	5'	13'	5'	5'	15'	51	2.4
12	6'	25'	5'	5'	15'	89	3.6
RIPRAP PAD (See Sheet 7)						77	

SPACING LETTERS
2.0"
3.5"
1.5"
3.5"
1.5"
3.5"
1.5"
3.5"
3.5"
3.0"
3.5"
1.5"
2.5"
1.5"
2.5"
3.5"
1.5"
2.0"
2.0"

RECLAMATION PROJECT
of the
DEPARTMENT OF NATURAL RESOURCES
STATE OF ILLINOIS
ROD BLAGOJEVICH, GOVERNOR

10" dia. Joel Brunsvold, Director
Illinois Dept. of Natural Resources

In cooperation with the Office of Surface Mining
United States Department of the Interior

B
24
CONSTRUCTION SIGN DETAIL
NOT TO SCALE

1. Furnishing, erecting and removing the sign shall be incidental to the contract.
2. The sign shall be painted on 1/2" or thicker exterior plywood (4' x 8'), color shall be black on white, and a 10" diameter Illinois state seal shall be provided by the I.D.N.R.
3. The posts shall be made of 4" x 4" wood or 2.5" metal pipe, and shall be 10' long. The sign shall be securely fastened to the posts with six 2.5" long, round head wood screws (for wood posts) or four 5" long, 3/8" diameter carriage bolts (for wood or metal posts).
4. The top of the sign shall be level with the top of the posts, and the posts shall be 1' from the edges of the sign. The posts shall be set in the ground 3', so that the bottom of the sign is 3' from the ground.