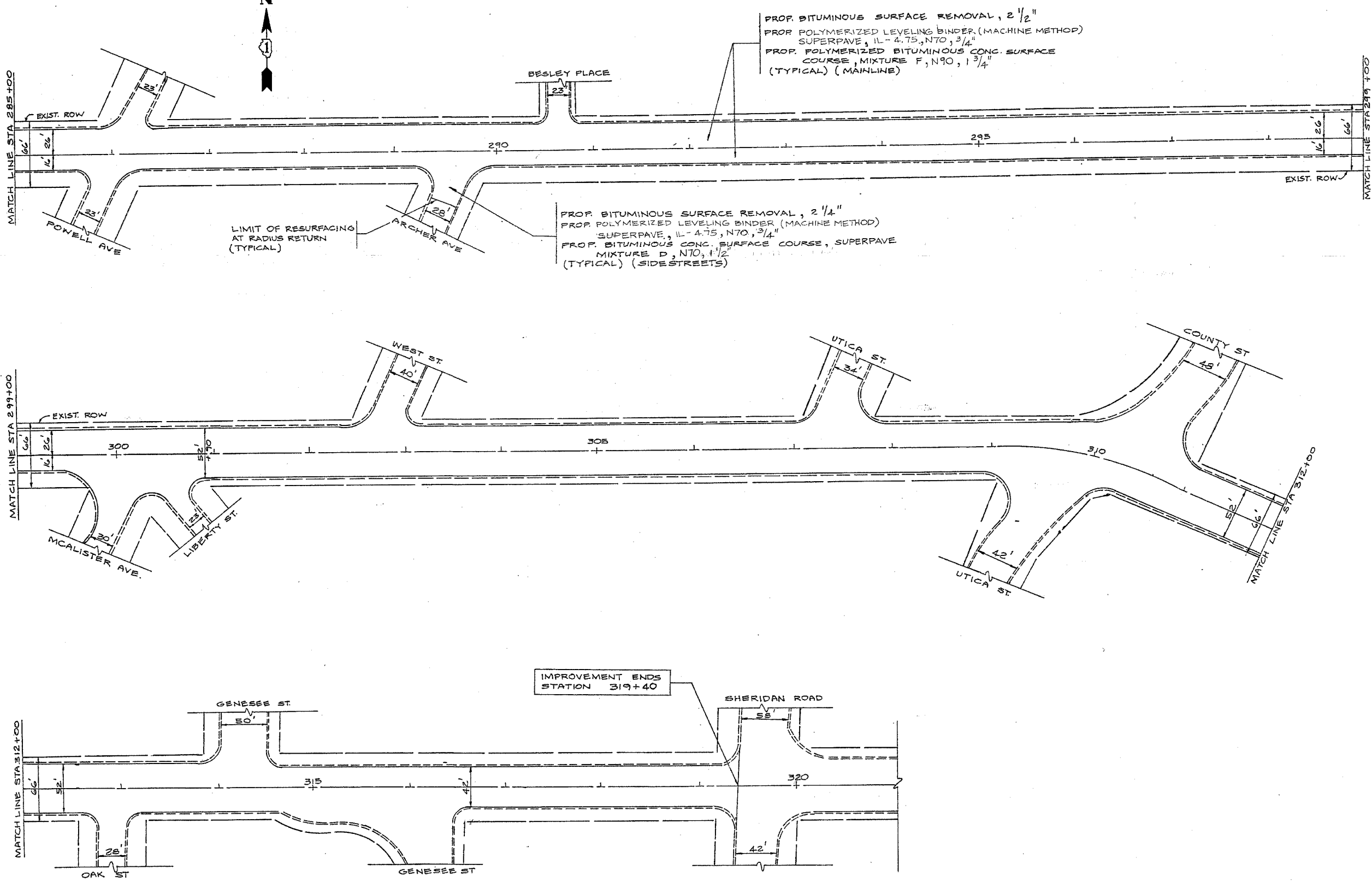


PAU FILE	SECTION	COUNTY	TOTAL SHEETS	SHEET NO
1223	(11&12)RS-6	LAKE	36	9
STA.	TO STA.			
FID. ROAD DIST NO 7	ILLINOIS	FED AID PROJECT		

60819



PROP. BITUMINOUS SURFACE REMOVAL, 2 1/2"
 PROP. POLYMERIZED LEVELING BINDER (MACHINE METHOD)
 SUPERPAVE, IL-4.75, N70, 3/4"
 PROP. POLYMERIZED BITUMINOUS CONC. SURFACE
 COURSE, MIXTURE F, N90, 1 3/4"
 (TYPICAL) (MAINLINE)

PROP. BITUMINOUS SURFACE REMOVAL, 2 1/4"
 PROP. POLYMERIZED LEVELING BINDER (MACHINE METHOD)
 SUPERPAVE, IL-4.75, N70, 3/4"
 PROP. BITUMINOUS CONC. SURFACE COURSE, SUPERPAVE
 MIXTURE D, N70, 1 1/2"
 (TYPICAL) (SIDE STREETS)

LIMIT OF RESURFACING
 AT RADIUS RETURN
 (TYPICAL)

IMPROVEMENT ENDS
 STATION 319+40

ILLINOIS DEPARTMENT OF TRANSPORTATION
BELVIDERE ROAD
 ILL 131 (GREENBAY RD) TO SHERIDAN RD
 ROADWAY PLAN

REVISIONS	
NAME	DATE

SCALE: VERT. _____
 HORIZ. _____
 DATE _____

DRAWN BY _____
 CHECKED BY _____