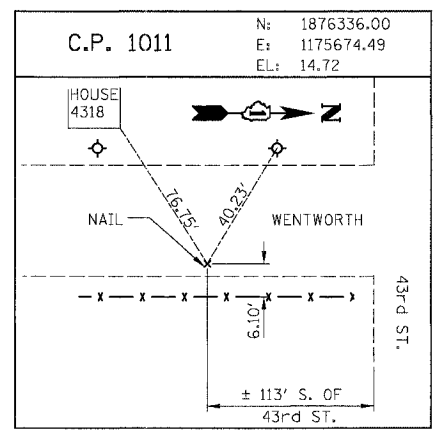


F.A.I.	SECTION	COUNTY	TOTAL SHEETS	SHEET NO.
94/90	*	COOK	556	43
STA. 3553+00.00		TO STA. 3585+00.00		
FED. ROAD DIST. NO. ILLINOIS FED. AID PROJECT				
62300 * (1818, ETC, 2324.6-1PR-8				

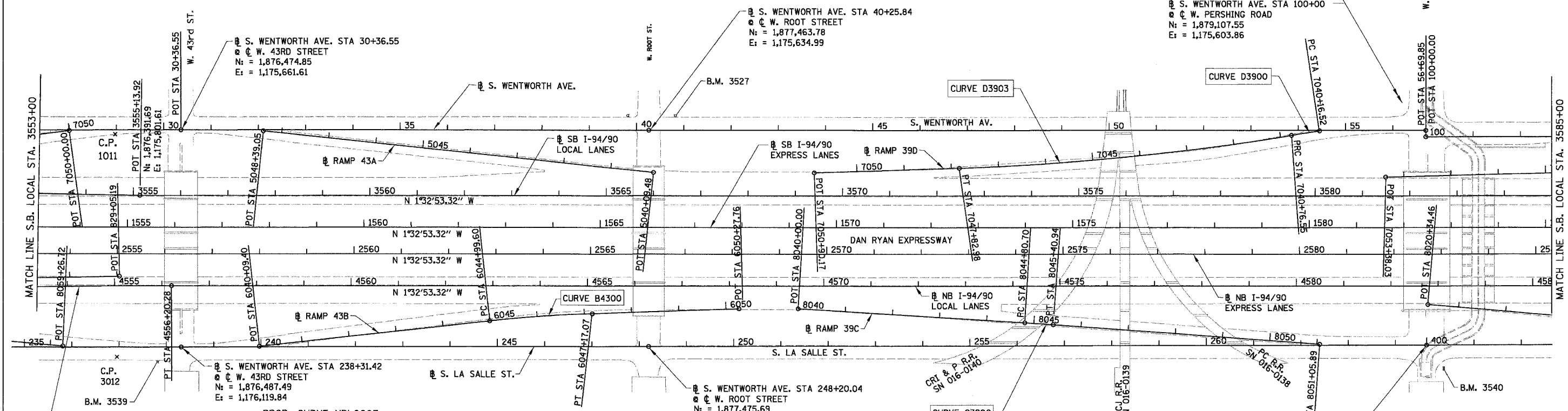


PROP. CURVE D3903
 P.I. STA = 7044+30.25
 N: = 1,878,475.96
 E: = 1,175,675.24
 $\Delta = 7^\circ 22' 41''$ (RT)
 $D = 1^\circ 02' 40''$
 $R = 5,486.00'$
 $T = 353.70'$
 $L = 706.43'$
 $E = 11.39'$
 P.C. STA = 7040+76.55
 N: = 1,878,823.36
 E: = 1,175,608.75
 P.T. STA = 7047+82.98
 N: = 1,878,122.90
 E: = 1,175,696.57

PROP. CURVE D3900
 P.I. STA = 7040+46.54
 N: = 1,878,852.84
 E: = 1,175,603.11
 $\Delta = 0^\circ 47' 26''$ (LT)
 $D = 1^\circ 19' 02''$
 $R = 4,350.00'$
 $T = 30.02'$
 $L = 60.03'$
 $E = 0.10'$
 P.C. STA = 7040+16.52
 N: = 1,878,882.40
 E: = 1,175,597.87
 P.T. STA = 7040+76.55
 N: = 1,878,823.36
 E: = 1,175,608.75

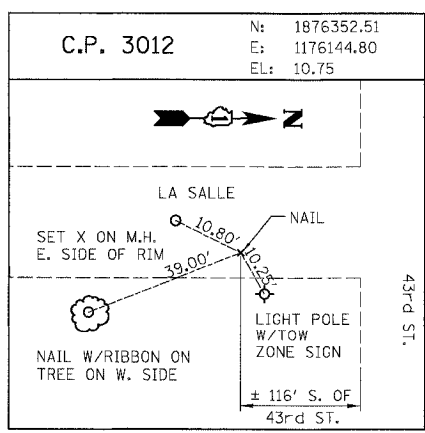
⊕ S. WENTWORTH AVE. STA 56+69.85
 ⊕ W. PERSHING ROAD
 N: = 1,879,107.55
 E: = 1,175,590.76

⊕ S. WENTWORTH AVE. STA 100+00
 ⊕ W. PERSHING ROAD
 N: = 1,879,107.55
 E: = 1,175,603.86



PROP. CURVE NBLOC08
 P.I. STA = 4554+19.42
 N: = 1,876,262.66
 E: = 1,175,997.17
 $\Delta = 1^\circ 32' 04''$ (RT)
 $D = 0^\circ 22' 55''$
 $R = 15,000.00'$
 $T = 200.89'$
 $L = 401.75'$
 $E = 1.35'$
 P.C. STA = 4552+18.53
 N: = 1,876,062.07
 E: = 1,176,007.97
 P.T. STA = 4556+20.28
 N: = 1,876,463.47
 E: = 1,175,991.74

PROP. CURVE NBLOC07
 P.I. STA = 4539+56.47
 N: = 1,874,785.65
 E: = 1,176,076.72
 $\Delta = 28^\circ 53' 07''$ (LT)
 $D = 3^\circ 52' 17''$
 $R = 1,480.00'$
 $T = 381.17'$
 $L = 746.13'$
 $E = 48.30'$
 $e = 5.9\%$
 S.A. = CONT. ROTATING PLANE
 ENDS AT STA 4536+66.66
 T.R. = 68.49' (REMOVAL TRANSITION ONLY)
 S.E. RUN = 393.00' (REMOVAL TRANSITION ONLY)
 S.R. = STA 4541+90.43 TO STA 4546+51.92
 P.C. STA = 4535+75.30
 N: = 1,874,442.48
 E: = 1,175,910.80
 P.T. STA = 4543+21.43
 N: = 1,875,166.27
 E: = 1,176,056.22



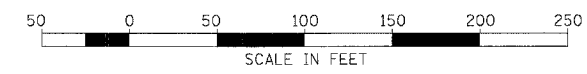
PROP. CURVE B4300
 P.I. STA = 6046+08.39
 N: = 1,877,246.14
 E: = 1,176,032.59
 $\Delta = 4^\circ 21' 02''$ (RT)
 $D = 2^\circ 00' 02''$
 $R = 2,864.00'$
 $T = 108.79'$
 $L = 217.47'$
 $E = 2.07'$
 $e = 3.0\%$
 S.A. = STA 6044+79.60 TO 6045+09.60
 S.R. = STA 6047+07.07 TO 6047+37.07
 P.C. STA = 6044+99.60
 N: = 1,877,138.36
 E: = 1,176,047.37
 P.T. STA = 6047+17.07
 N: = 1,877,354.72
 E: = 1,176,026.03

PROP. CURVE C3900
 P.I. STA = 8045+10.82
 N: = 1,878,300.35
 E: = 1,176,021.08
 $\Delta = 0^\circ 41' 25''$ (RT)
 $D = 1^\circ 08' 45''$
 $R = 5,000.00'$
 $T = 30.12'$
 $L = 60.24'$
 $E = 0.09'$
 P.C. STA = 8044+80.70
 N: = 1,878,270.25
 E: = 1,176,020.07
 P.T. STA = 8045+40.94
 N: = 1,878,330.44
 E: = 1,176,022.46

⊕ S. LASALLE ST. STA 400+00.00 AH
 STA 264+66.03 BK
 ⊕ W. PERSHING ROAD
 N: = 1,879,121.00
 E: = 1,176,043.89

BOWMAN, BARRETT & ASSOCIATES INC.
 CONSULTING ENGINEERS
 Chicago, Illinois
 312.228.0100
 www.bbainc.com

NOTE: ALL COORDINATES ARE GIVEN IN STATE PLANE (GRID) COORDINATES. GRID TO GROUND CONVERSION FACTOR = 1.000010988654360



REVISIONS	
NAME	DATE

ILLINOIS DEPARTMENT OF TRANSPORTATION
 F.A.I. 94/90 (DAN RYAN EXPRESSWAY)
 31ST STREET TO 71ST STREET

ALIGNMENT, TIES, AND BENCHMARKS

SCALE: 1"=100'
 DATE: 07/07/05

DRAWN BY: JDC
 CHECKED BY: RS

ALT-02
 6/24/2005 14:50:20 PM