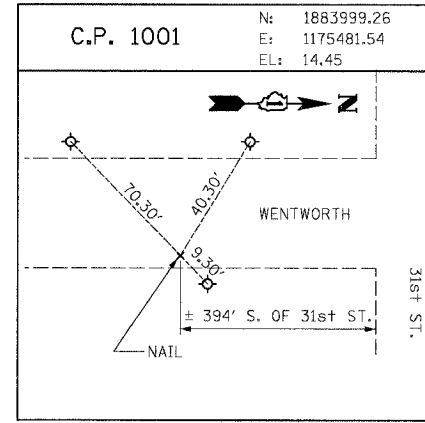
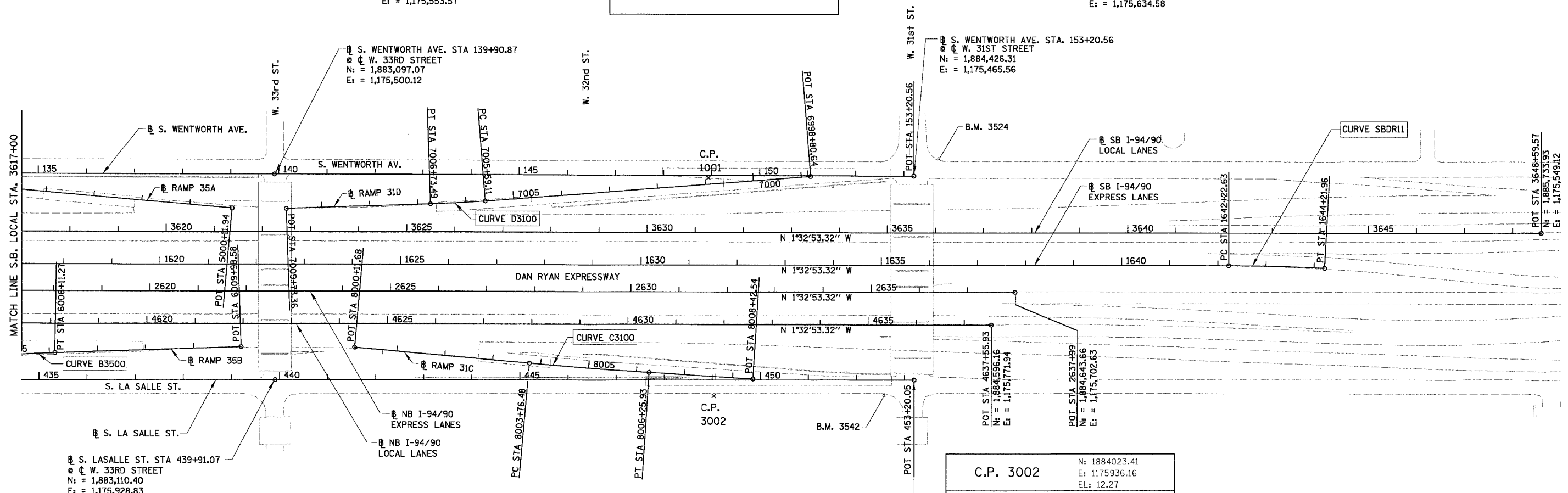


F.A.I.	SECTION	COUNTY	TOTAL SHEETS	SHEET NO.
94/90	*	COOK	556	45
STA. 3617+00.00		TO STA. -		
FED. ROAD DIST. NO.		ILLINOIS FED. AID PROJECT		
62300		(181B, ETC. 2324.6-1PIR-8)		

PROP. CURVE D3100  
P.I. STA = 7006+16.31  
N<sub>i</sub> = 1,883,480.18  
E<sub>i</sub> = 1,175,550.12  
Δ = 2° 35' 11" (RT)  
D = 2° 15' 40"  
R = 2,534.00'  
T = 57.20'  
L = 114.38'  
E = 0.65'  
e = 2.6%  
S.A. = STA 7005+43.11 TO 7005+63.11  
S.R. = STA 7006+69.49 TO 7006+89.49  
P.C. STA = 7005+59.11  
N<sub>i</sub> = 1,883,537.06  
E<sub>i</sub> = 1,175,544.09  
P.T. STA = 7006+73.49  
N<sub>i</sub> = 1,883,423.08  
E<sub>i</sub> = 1,175,553.57



PROP. CURVE SBDR11  
P.I. STA = 1643+22.32  
N<sub>i</sub> = 1,885,186.06  
E<sub>i</sub> = 1,175,631.95  
Δ = 3° 03' 18" (RT)  
D = 1° 31' 57"  
R = 3,738.57'  
T = 99.69'  
L = 199.33'  
E = 1.33'  
e = ±2.5% (MATCH EXISTING)  
S.A. = STA 1641+95.99 TO 1642+35.95  
S.R. = N/A  
P.C. STA = 1642+22.63  
N<sub>i</sub> = 1,885,086.40  
E<sub>i</sub> = 1,175,634.65  
P.T. STA = 1644+21.96  
N<sub>i</sub> = 1,885,285.71  
E<sub>i</sub> = 1,175,634.58

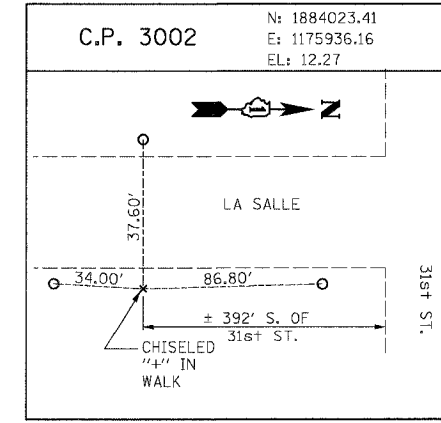


S. LASALLE ST. STA 439+91.07  
C. W. 33RD STREET  
N<sub>i</sub> = 1,883,110.40  
E<sub>i</sub> = 1,175,928.83

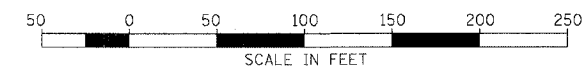
PROP. CURVE B3500  
P.I. STA = 6005+40.21  
N<sub>i</sub> = 1,882,580.23  
E<sub>i</sub> = 1,175,889.72  
Δ = 3° 25' 00" (RT)  
D = 2° 24' 12"  
R = 2,384.00'  
T = 71.10'  
L = 142.16'  
E = 1.06'  
e = 2.7%  
S.A. = STA 6004+53.11 TO 6004+73.11  
S.R. = STA 6006+07.27 TO 6006+27.27  
P.C. STA = 6004+69.11  
N<sub>i</sub> = 1,882,509.63  
E<sub>i</sub> = 1,175,898.23  
P.T. STA = 6006+11.27  
N<sub>i</sub> = 1,882,651.20  
E<sub>i</sub> = 1,175,885.43

PROP. CURVE C3100  
P.I. STA = 8005+01.21  
N<sub>i</sub> = 1,883,762.40  
E<sub>i</sub> = 1,175,886.19  
Δ = 1° 25' 45" (LT)  
D = 0° 34' 23"  
R = 10,000.00'  
T = 124.73'  
L = 249.45'  
E = 0.78'  
P.C. STA = 8003+76.48  
N<sub>i</sub> = 1,883,637.89  
E<sub>i</sub> = 1,175,878.68  
P.T. STA = 8006+25.93  
N<sub>i</sub> = 1,883,887.05  
E<sub>i</sub> = 1,175,890.60

S. LASALLE ST. STA 453+20.05  
C. W. 31ST STREET  
N<sub>i</sub> = 1,884,438.84  
E<sub>i</sub> = 1,175,890.52



NOTE: ALL COORDINATES ARE GIVEN IN STATE PLANE (GRID) COORDINATES. GRID TO GROUND CONVERSION FACTOR = 1.000010988654360



REVISIONS	
NAME	DATE

ILLINOIS DEPARTMENT OF TRANSPORTATION  
F.A.I. 94/90 (DAN RYAN EXPRESSWAY)  
31ST STREET TO 71ST STREET

ALIGNMENT, TIES, AND BENCHMARKS

SCALE: 1"=100'  
DATE: 07/07/05

DRAWN BY: JDC  
CHECKED BY: RS

BOWMAN, BARRETT & ASSOCIATES INC.  
CONSULTING ENGINEERS  
Chicago, Illinois  
312.228.0100  
www.bbainc.com

ALT-04  
145/09 PM  
07/24/2005