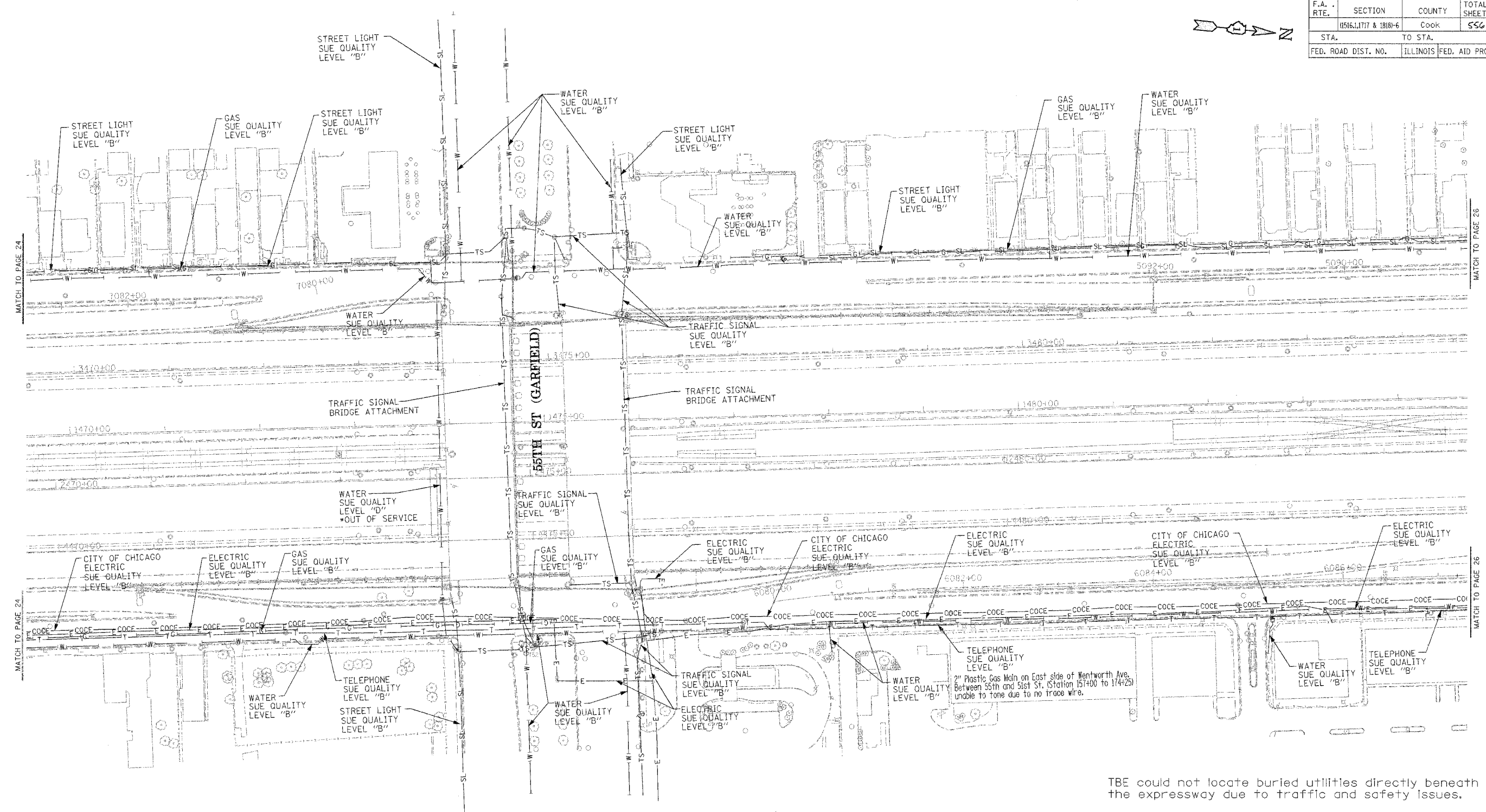
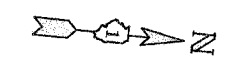


F.A. RTE.	SECTION	COUNTY	TOTAL SHEETS	SHEET NO.
	0516,1717 & 1818-6	Cook	556	278
STA.	TO STA.			
FED. ROAD DIST. NO.	ILLINOIS	FED. AID PROJECT		



TBE could not locate buried utilities directly beneath the expressway due to traffic and safety issues.

*At the time of Quality Level "B" SUE services, the water lines were active. The lines, however, are now expected to be out of service per IDOT.



TBE GROUP, INC.
 CIVIL ENGINEERING * TRANSPORTATION * ENVIRONMENTAL
 * PLANNING * UTILITY ENGINEERING/LOCATING
 SOUTHERN REGION: FL, GA, SC, NC
 NORTHERN REGION: IL, IN, MI, OH, MD, NJ, NY
 PA, VA, CANADA
 WESTERN REGION: AZ, NV, NM, TX, CA, OR, UT, WA

IL09500164, 167, 168, 170, 171, 179, 180, 182, 204,
 205, 206, 211, 212, 219, 221, 225, 226, 227, 228, 230, 232
 TBE SUE PAGE NO: 25 of 36
 Checked by: *M. O. [Signature]* E-9802
 SUE Quality Level "A" : Test Holes
 SUE Quality Level "B" : Designating

—TS—	—TS—	TRAFFIC SIGNAL
—SL—	—SL—	STREET LIGHT
—COCE—	—COCE—	CITY OF CHICAGO ELECTRIC
—T—	—T—	TELEPHONE
—W—	—W—	WATER
—G—	—G—	GAS
—CTV—	—CTV—	CABLE TELEVISION
—FO—	—FO—	FIBER OPTIC
—E—	—E—	ELECTRIC
—	—	TEST HOLE

Utilities shown on these plans as depicted in the legend have been investigated by TBE Group, Inc in accordance with SUE Industry Standards. All other information shown has been provided to TBE Group, Inc by others.

205 W. WACKER DRIVE
 SUITE 1020
 CHICAGO, IL 60606
 (312) 704-1970

REVISIONS	
NAME	DATE

ILLINOIS DEPARTMENT OF TRANSPORTATION
 SUE Investigation of Underground Utilities
 I-90/I-94 Dan Ryan Expressway from
 I-57 to 69th Street
 Contract Number: 62590, 62592, 62594
 SOL "B" DATE : 7/22/04
 DRAWN BY : KLC
 SCALE : 1" = 50'