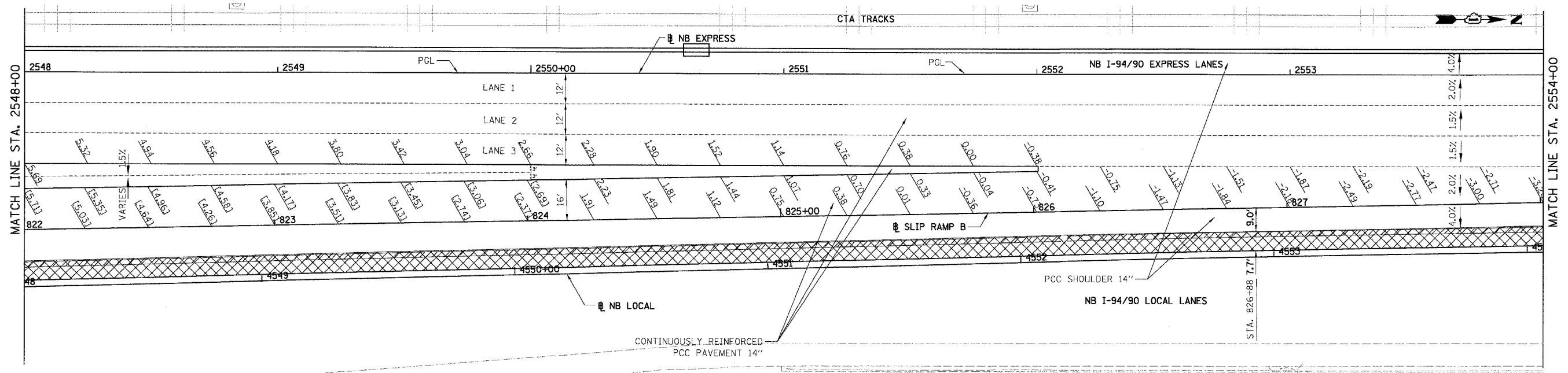
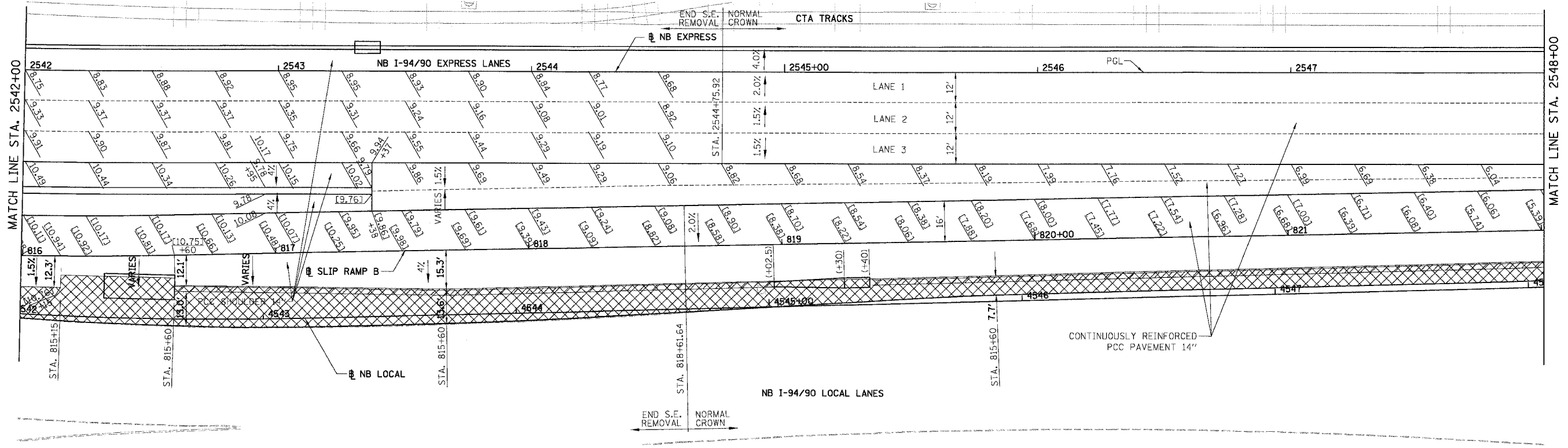


NOTE:

1. PAVEMENT ELEVATIONS ALONG GORES, RAMPS, AND IN AREAS OF SUPERELEVATION TRANSITION ARE PROVIDED AT 25' INTERVALS, FOR ALL OTHER ELEVATIONS, REFER TO PROFILE AND TYPICAL SECTIONS.



F.A.I.	SECTION	COUNTY	TOTAL SHEETS	SHEET NO.
94/90		COOK	556	259
STA. 2542+00		TO STA. 2554+00		
FED. ROAD DIST. NO.		ILLINOIS FED. AID PROJECT		
62300		*0818, ETC. 2324.6-IPR-8		



- LEGEND**
- ELEVATION STATIONED OFF OF NB I-94/90 EXPRESS LANES
  - (•••) ELEVATION STATIONED OFF OF NB I-94/90 LOCAL LANES
  - [•••] ELEVATION STATIONED OFF OF SLIP RAMP ALIGNMENT
  - XXXXX TEMPORARY PAVEMENT (INTERSTATE) / SHOULDERS

BOWMAN, BARRETT & ASSOCIATES INC.  
CONSULTING ENGINEERS  
Chicago, Illinois  
312.228.0100  
www.bbainc.com

REVISIONS	
NAME	DATE

ILLINOIS DEPARTMENT OF TRANSPORTATION  
F.A.I. 94/90 (DAN RYAN EXPRESSWAY)  
31ST STREET TO 71ST STREET  
NB EXPRESS LANE RECONSTRUCTION  
PAVEMENT JOINTING AND ELEVATION PLAN  
NORTHBOUND STA. 2542+00 TO STA. 2554+00  
SCALE: 1"=20'  
DATE: 07/07/05  
DRAWN BY: TER  
CHECKED BY: JDC

JT-16  
6/24/2005 157:28 PM