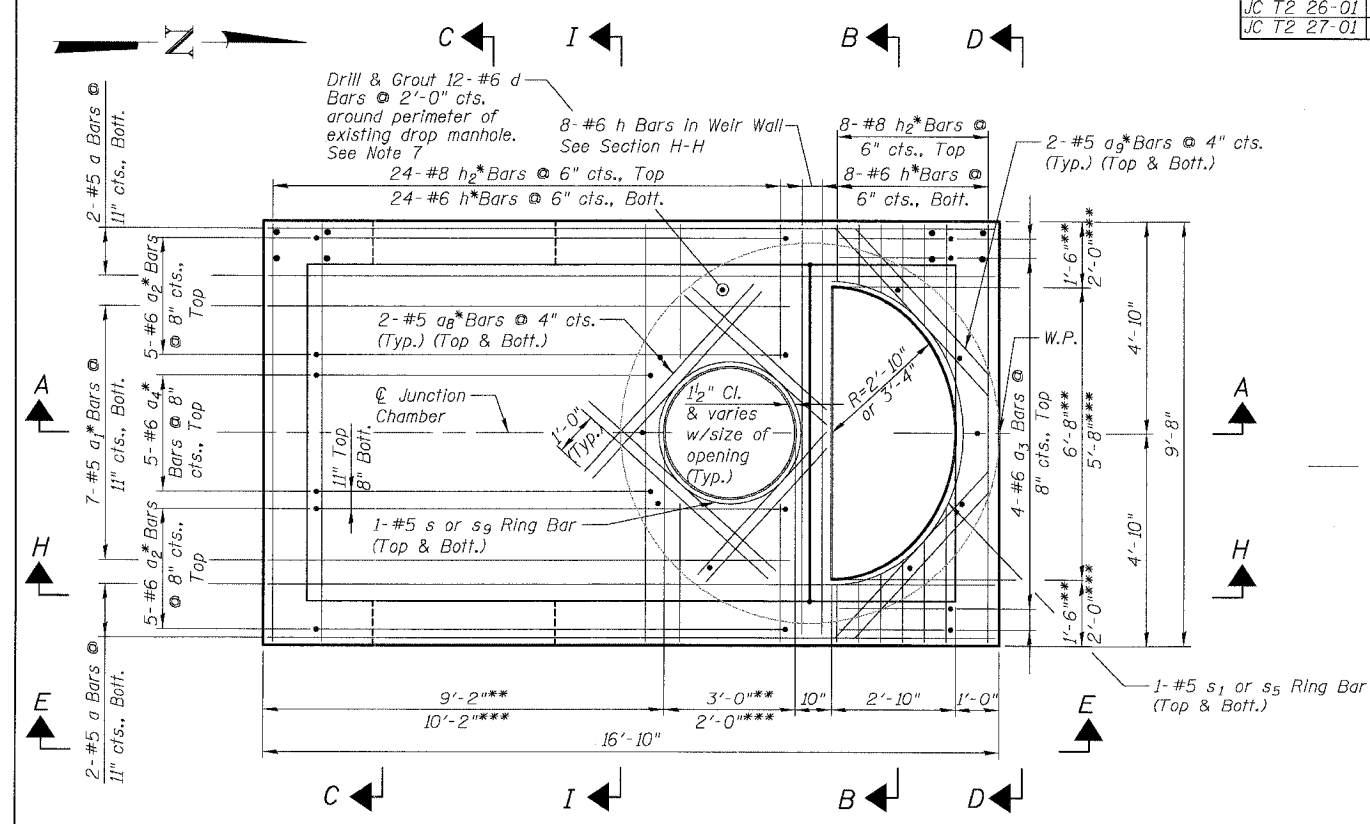


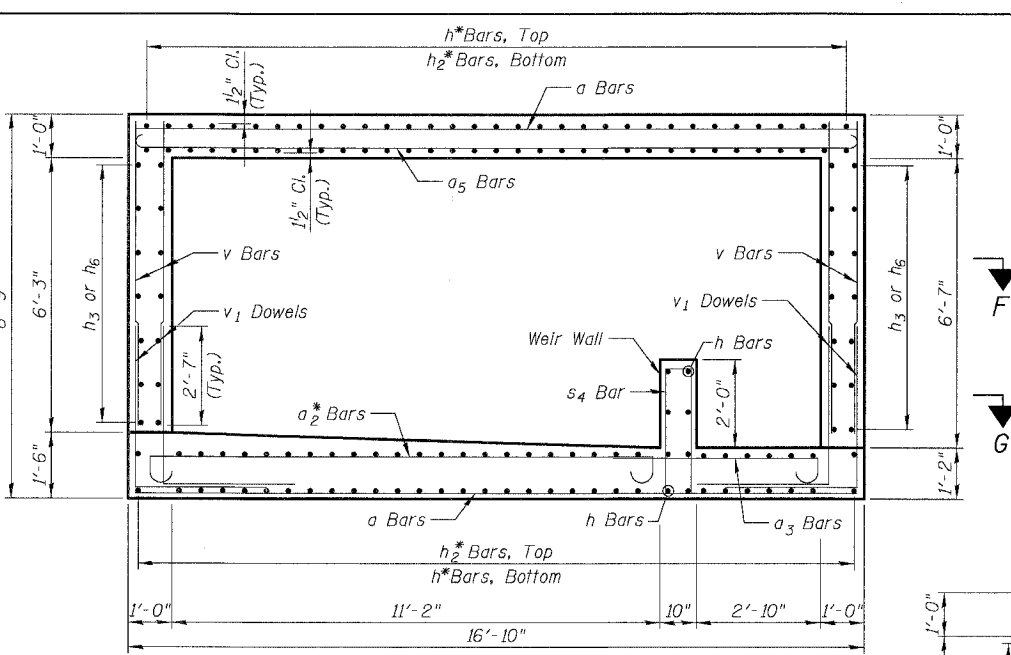
**TOP SLAB PLAN**

Adjust openings in top slab for final location of frame and grate required due to roadway barrier location. Adjust reinforcement as required for position of openings.

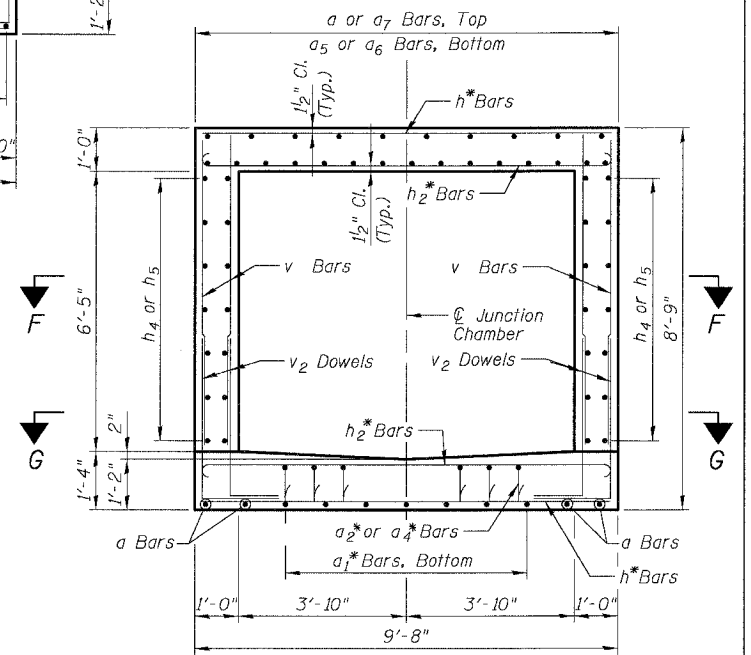
JC T2 10-01	**
JC T2 11-01	***
JC T2 13-01	**
JC T2 14-01	***
JC T2 15-01	**
JC T2 17-01	**
JC T2 17-02	***
JC T2 22-01	***
JC T2 25-01	***
JC T2 26-01	***
JC T2 27-01	**



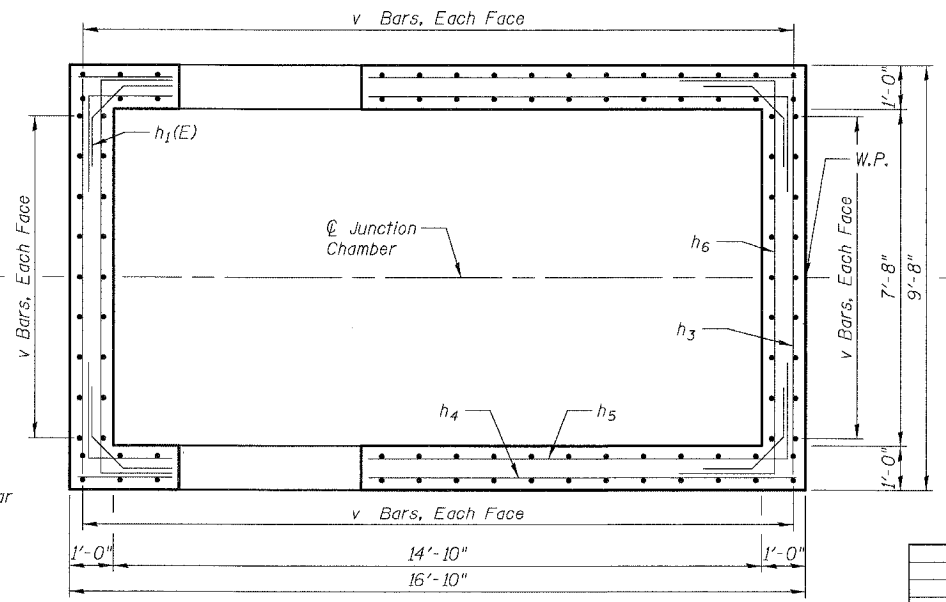
**BOTTOM SLAB PLAN**



**SECTION H-H**



**SECTION I-I**



**SECTIONAL PLAN F-F**

**NOTES:**

- See Sheet JC-4 for Sections A-A, B-B, C-C, D-D and Sectional Plan G-G. See Sheet JC-5 for Section E-E and Bill of Bars.
- All dimensions and elevations shall be field verified prior to construction.
- Concrete pipe sizes shall be coordinated with openings provided into junction chamber before pouring concrete.
- Manhole Frame, Ladder Rungs and any inserts installation shall be coordinated with Drainage Plans.
- Concrete cover for reinforcement steel to be 2" unless otherwise noted.
- All lap splices marked on the drawings are minimum.
- Epoxy Grout #6 d bars in drilled holes with a min. depth of 9" in accordance with Art. 584 of the Std. Specs. Drill holes a min. of 4" from edge of existing concrete. Orient hook to fill.

BOWMAN, BARRETT & ASSOCIATES INC.  
CONSULTING ENGINEERS  
Chicago, Illinois  
312 228 0100  
www.bbainc.com

REVISIONS	NAME	DATE

SHEET JC-3 OF JC-22  
ILLINOIS DEPARTMENT OF TRANSPORTATION  
F.A.I. 94/90 (DAN RYAN EXPRESSWAY)  
31ST STREET TO 71ST STREET  
NB EXPRESS LANE RECONSTRUCTION  
JUNCTION CHAMBER, TYPE 2  
REINFORCEMENT DETAILS 1  
SCALE: N.T.S. DRAWN BY: DJM  
DATE: 07/07/05 CHECKED BY: BLU

6/28/2005 8:54:24 AM