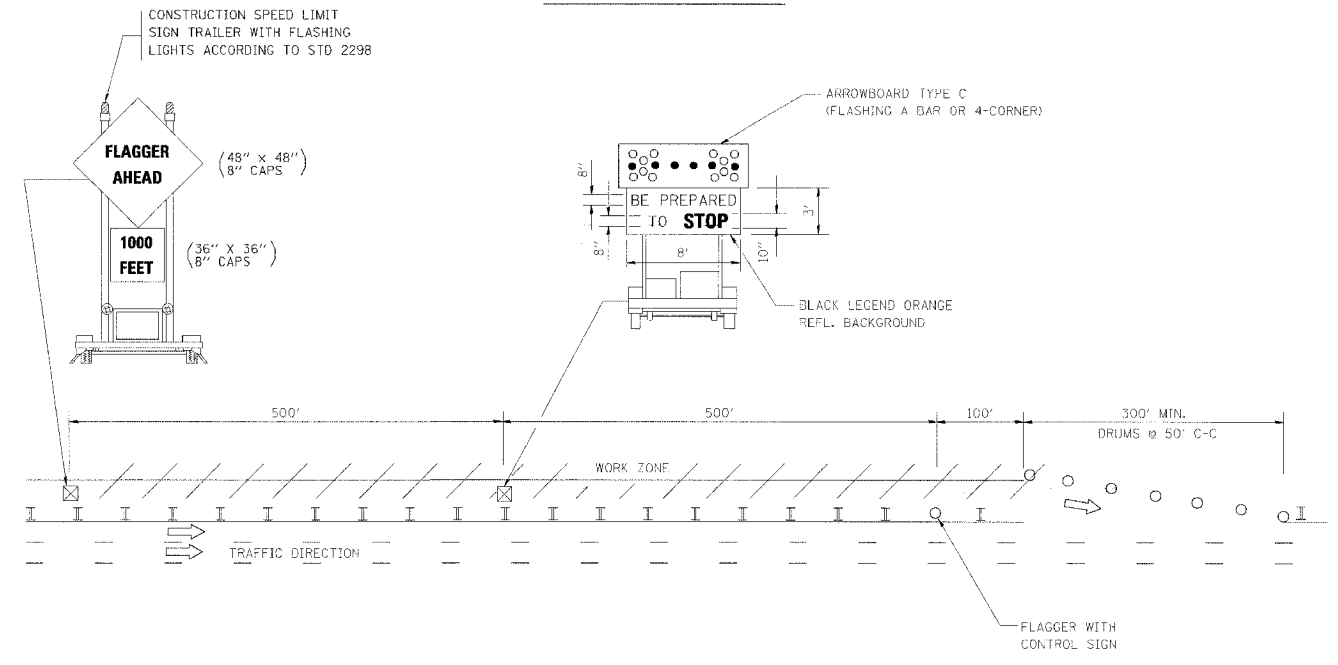


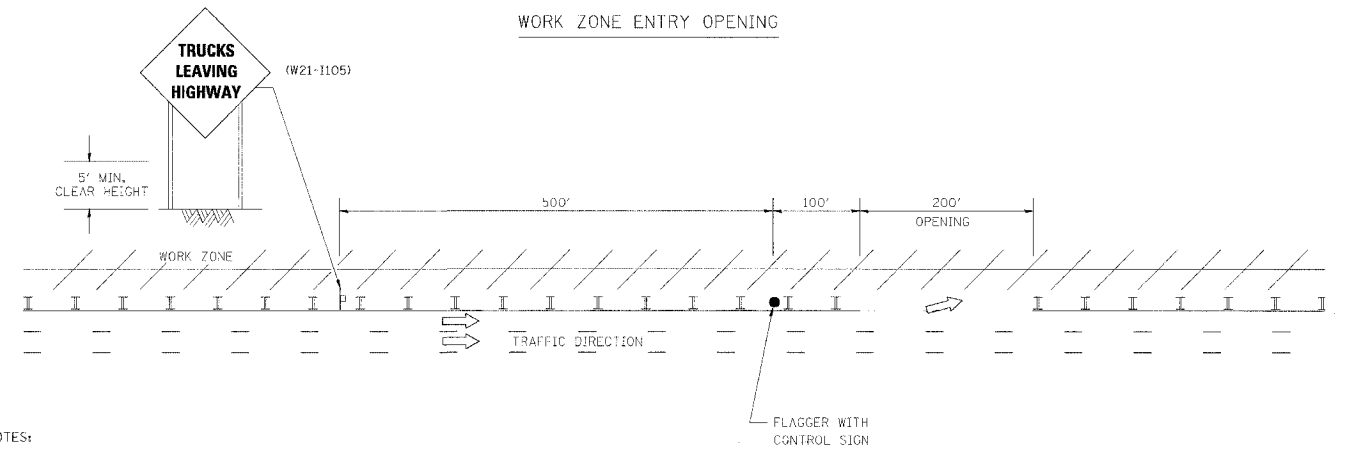
STATE	SECTION	COUNTY	TOTAL SHEETS	SHEET NO.
			556	458
STA.		TO STA.		
FED. ROAD DIST. NO.	ILLINOIS	FED. AID PROJECT		

SIGNING FOR FLAGGING OPERATIONS AT WORK ZONE OPENINGS

WORK ZONE EXIT OPENING



WORK ZONE ENTRY OPENING



NOTES:

1. The Arrowboard, the Flagger Ahead trailer mounted sign, and the Trucks Leaving Highway sign shall be removed or turned away from traffic and the exit and entry openings shall be closed when the flagging operation ceases.
2. Work Zone Exit Openings should be a minimum of one half mile apart.
3. Nighttime Flagging Operations; The flag station shall be lighted with additional lights other than streetlights. The flagger control sign and the flagger vest shall be reflectorized. In addition, the flagger shall have a flashlight and lighted wand.
4. Exiting the work zone at any place other than at a Work Zone Exit Opening will be prohibited.
5. All vehicles shall enter the work zone at entry openings, using their turn signals to warn motorists

REVISIONS	
NAME	DATE

ILLINOIS DEPARTMENT OF TRANSPORTATION

SIGNING FOR FLAGGING OPERATIONS AT WORK ZONE OPENINGS

SCALE: NONE
DATE: **DATE**

DRAWN BY: CADD
CHECKED BY: TC-18