

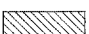



**LEGEND:**

-  TREE REMOVAL
-  TREE TRUNK PROTECTION
-  TREE REMOVAL
-  REMOVE DRIVES

1. PR. TRAFFIC BARRIER TERMINAL, TYPE 1 SPECIAL (FLARED) 12:1 FLARE STA. 106+10 RT, STA. 107+90 LT AND STA. 110+93 LT TAPER POINTS ARE AT 106+65 RT, 107+35 LT, AND 110+38 LT
2. PR. TRAFFIC BARRIER TERMINAL, TYPE 1 SPECIAL (TANGENT) STA. 105+95 LT, STA. 107+47 RT, STA. 108+13 RT, STA. 108+92 LT AND STA. 111+08 RT
3. PR. STEEL PLATE BEAM GUARD RAIL, TYPE B STA. 105+95 TO STA. 107+90 LT, STA. 106+10 TO STA. 107+47 RT, STA. 108+13 TO STA. 111+08 RT AND STA. 108+92 TO STA. 110+93 LT (STA. 105+95 TO STA. 106+20 LT. WILL BE INSTALLED AFTER STAGE II MOT IS COMPLETE)

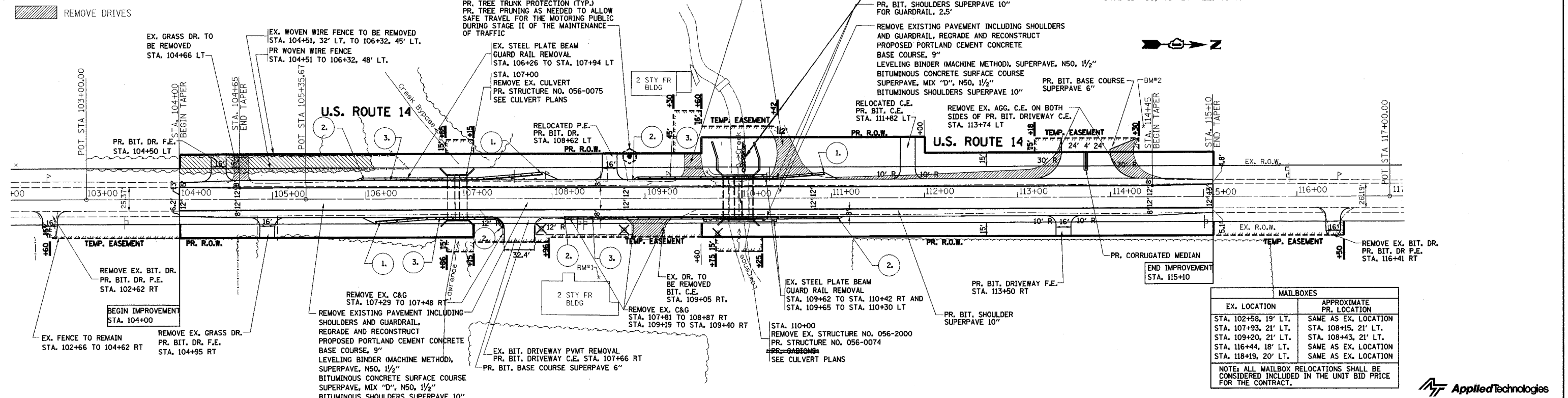
F.A.P. RTE.	SECTION	COUNTY	TOTAL SHEETS	SHEET NO.
066	21 (B&G) R	MCHENRY	66	16
STA. 104+00 TO STA. 115+10				
FED. ROAD DIST. NO. 1 ILLINOIS FED. AID PROJECT				

#62391

**BENCHMARK**

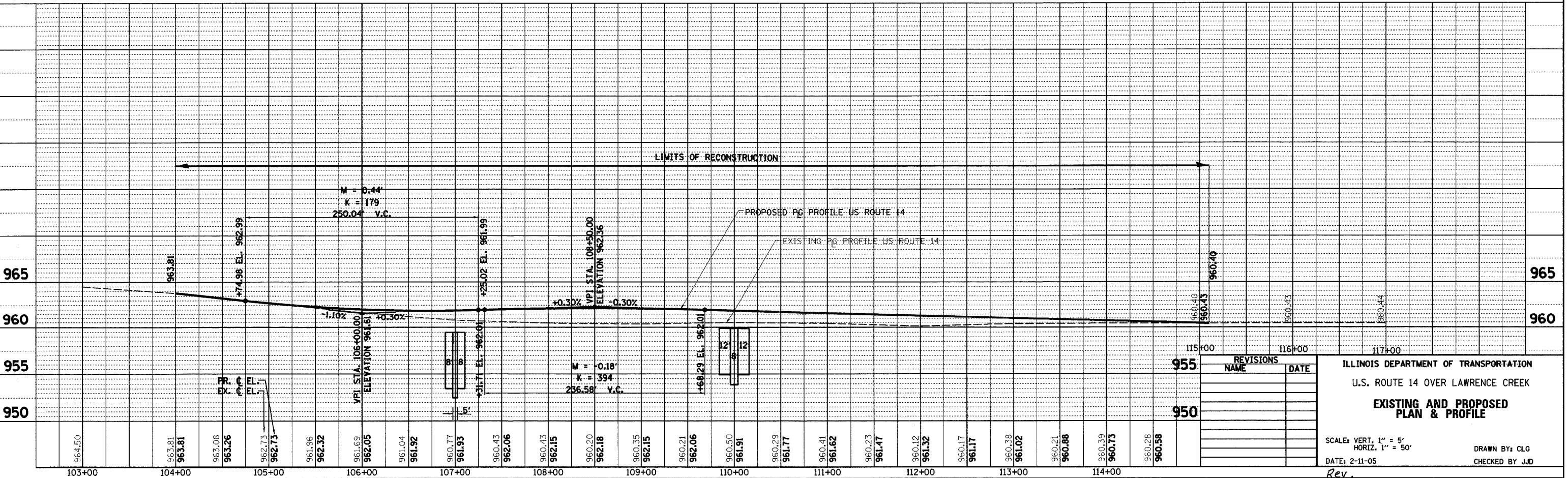
BM #1 CHISELED "X" IN WEST FACE OF CONCRETE WALK, 11.04' SOUTHWEST OF NORTHWEST CORNER OF CONCRETE FOUNDATION FOR TAVERN. STA. 108+50, 85' RT EL. 959.70

BM #2 CHISELED "X" AT SOUTHEAST CORNER OF TRANSFORMER PAD. STA. 114+35, 75' LT EL. 957.37



MAILBOXES	
EX. LOCATION	APPROXIMATE PR. LOCATION
STA. 102+58, 19' LT.	SAME AS EX. LOCATION
STA. 107+93, 21' LT.	STA. 108+15, 21' LT.
STA. 109+20, 21' LT.	STA. 108+43, 21' LT.
STA. 116+44, 18' LT.	SAME AS EX. LOCATION
STA. 118+19, 20' LT.	SAME AS EX. LOCATION

NOTE: ALL MAILBOX RELOCATIONS SHALL BE CONSIDERED INCLUDED IN THE UNIT BID PRICE FOR THE CONTRACT.



REVISIONS	
NAME	DATE

ILLINOIS DEPARTMENT OF TRANSPORTATION  
 U.S. ROUTE 14 OVER LAWRENCE CREEK  
 EXISTING AND PROPOSED  
 PLAN & PROFILE

SCALE: VERT. 1" = 5'  
 HORIZ. 1" = 50'

DATE: 2-11-05  
 Rev. \_\_\_\_\_

DRAWN BY: CLG  
 CHECKED BY: JJD