

F.A.P. RTE.	SECTION	COUNTY	TOTAL SHEETS	SHEET NO.
066	21 (B&G) R	MCHENRY		17
STA. 82+00		TO STA. 105+00		
FED. ROAD DIST. NO.		ILLINOIS FED. AID PROJECT		

#62391

PRE STAGE I WORK

1. INSTALL TEMPORARY CULVERT AT STA. 110+00.
2. REMOVE EXISTING INLET COVER AT STA. 107+00 AND REPLACE WITH CLOSED LID OR APPROVED EQUAL.
3. REMOVE EAST HEADWALL ONLY AT STA. 110+00 TO ALLOW CONSTRUCTION OF TEMPORARY WIDENING
4. INSTALL BULKHEAD AT EAST END EXISTING CULVERT AT STA. 110+00 AROUND TEMP CULVERT AND ACROSS UNUSED RCB CULVERT OPEN CELL TO ALLOW CONSTRUCTION OF TEMPORARY WIDENING.
5. CONSTRUCT TEMPORARY PAVEMENT WIDENING OVER TEMPORARY CULVERT ON EAST SIDE OF US 14.

MAJOR WORK STAGE I

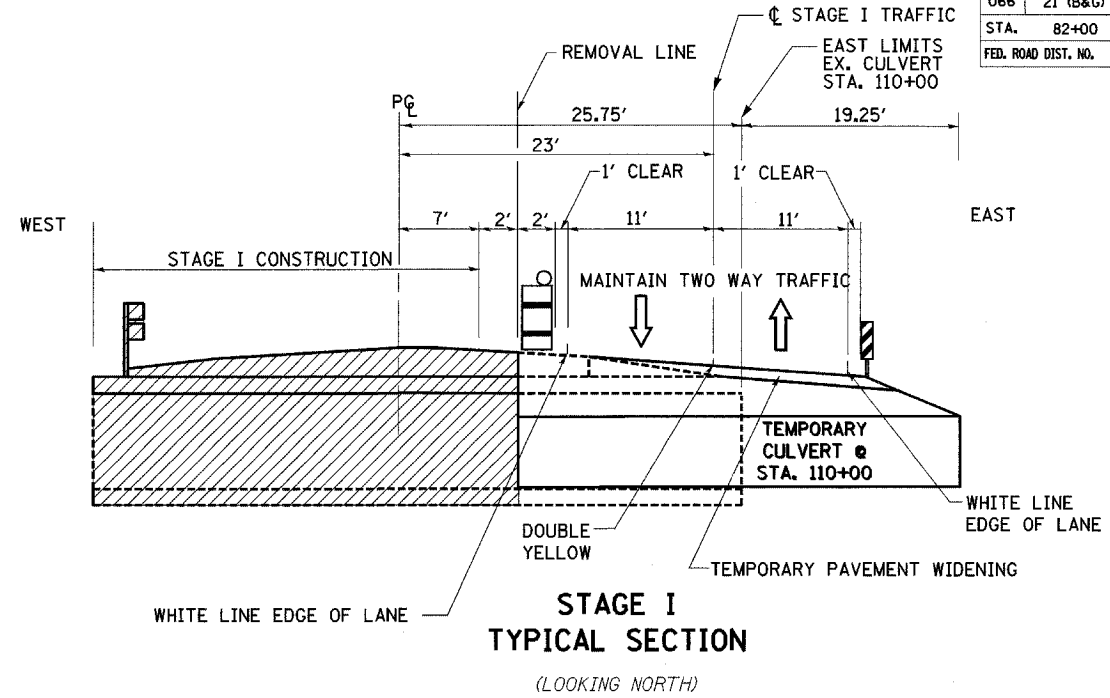
1. REMOVE WESTERN PORTION OF BOX CULVERT AT STA. 110+00 AND WESTERN PORTION OF CIRCULAR CULVERT AT STA. 107+00.
2. CONSTRUCT WESTERN PORTION OF EACH BOX CULVERT AT STA. 107+00 AND 110+00.
3. REMOVE, REGRADE, AND RECONSTRUCT WEST PORTION OF US ROUTE 14.
4. INSTALLATION OF PROPOSED STEEL PLATE BEAM GUARDRAIL, TYPE B AND TRAFFIC BARRIER TERMINAL, TYPE 1 SPECIAL (TANGENT) FROM STA. 105+95 TO STA. 106+20 LT. IS DELAYED UNTIL AFTER STAGE II CONSTRUCTION IS COMPLETE.

NOTES:

1. LOCATIONS OF ADVANCED WARNING SIGNS, TEMPORARY CONCRETE BARRIER, AND ALL OTHER TRAFFIC CONTROL DEVICES FOR STAGE I WORK SHALL BE AS SHOWN ON THIS PLAN SHEET. THIS WORK SHALL BE IN ACCORDANCE WITH HIGHWAY STANDARDS 701331 AND 702001. WORK SHALL NOT BEGIN UNTIL ALL TRAFFIC CONTROL DEVICES ARE IN PLACE AND APPROVED BY THE ENGINEER.
2. THE CONTRACTOR SHALL MAINTAIN ACCESS TO ALL PRIVATE AND COMMERCIAL ENTRANCES AND SIDESTREETS.
3. ALL ADVANCED WARNING SIGNS ON THIS SHEET ARE TO BE POST MOUNTED.
4. THE STATIONING FOR SIGNS ARE APPROXIMATE. ADJUST LOCATIONS AS NEEDED TO AVOID SIDEROADS, DRIVEWAYS, AND OTHER OBSTACLES.
5. THE MOT AS SHOWN IN THE PLANS SHALL BE INCLUDED IN COST OF TRAFFIC CONTROL AND PROTECTION, STANDARD 701331.

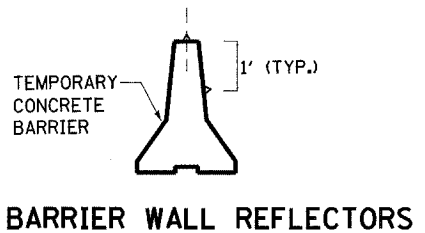
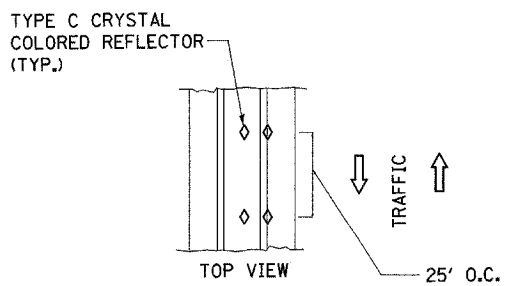
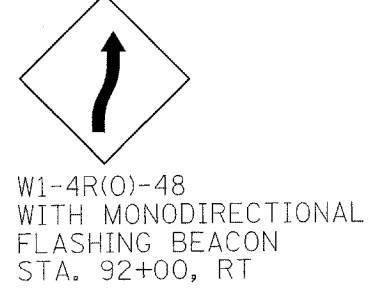
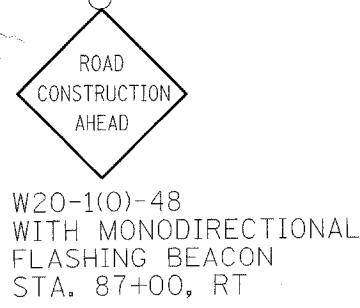
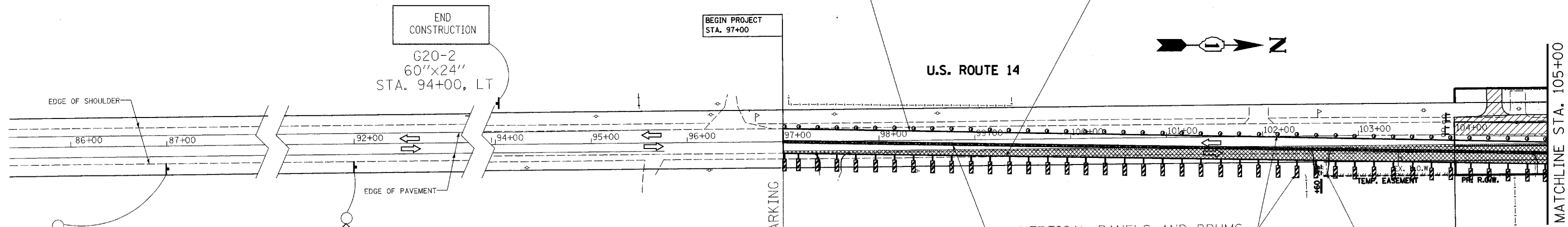
SYMBOLS

- CONSTRUCTION AREA
- 10" TEMPORARY PAVEMENT
- TEMPORARY CONCRETE BARRIER
- DRUMS WITH MONODIRECTIONAL STEADY BURNING LIGHTS
- SIGN
- IMPACT ATTENUATORS, TEMPORARY (FULLY REDIRECTIVE, NARROW)
- TYPE III BARRICADES WITH MONODIRECTIONAL FLASHING LIGHTS
- DIRECTION OF TRAVEL
- VERTICAL PANEL



PAVEMENT MARKING TAPE, TYPE III, 4", SOLID, WHITE
 STA. 97+00 TO STA. 104+00, LT.
 STA. 115+10 TO STA. 122+10, LT.

TEMPORARY PAVEMENT MARKING LINE, 4", SOLID, WHITE
 STA. 97+00 TO STA. 122+10, RT.
 STA. 104+00 TO STA. 115+10, LT.



VERTICAL PANELS AND DRUMS
 20' C-C ON TAPER

PAVEMENT MARKING TAPE, TYPE III, 4", SOLID, DOUBLE YELLOW
 STA. 97+00 TO STA. 102+00
 STA. 117+10 TO STA. 122+10

REMOVE EXISTING PAVEMENT MARKING
 STA. 97+00 TO STA. 122+10, RT
 STA. 97+00 TO STA. 104+00 ϕ
 STA. 115+10 TO STA. 122+10 ϕ

REMOVE EXISTING RAISED REFLECTIVE PAVEMENT MARKERS
 STA. 97+00 TO STA. 104+00
 STA. 115+10 TO STA. 122+10

REVISIONS	
NAME	DATE

ILLINOIS DEPARTMENT OF TRANSPORTATION
 U.S. ROUTE 14 OVER LAWRENCE CREEK
MAINTENANCE OF TRAFFIC STAGE I

SCALE: 1" = 50'
 DATE: 3-08-05
 DRAWN BY: CLG
 CHECKED BY: JJD

