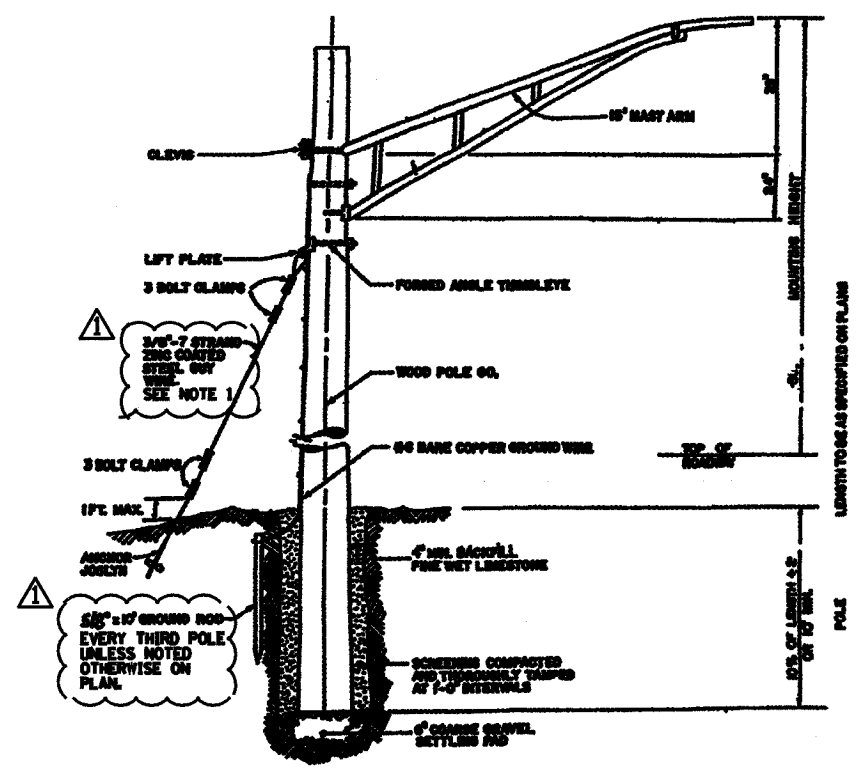


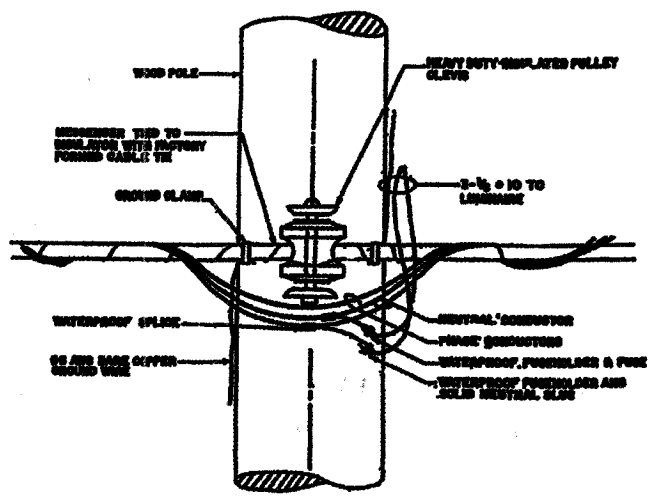
* Sheet 31 is deleted *

F.A.P. RTE.	SECTION	COUNTY	TOTAL SHEETS	SHEET NO.
066	21 (B&G) R	MCHEMRY	66	32
STA.		TO STA.		
FED. ROAD DIST. NO.	ILLINOIS FED. AID PROJECT			

#62391

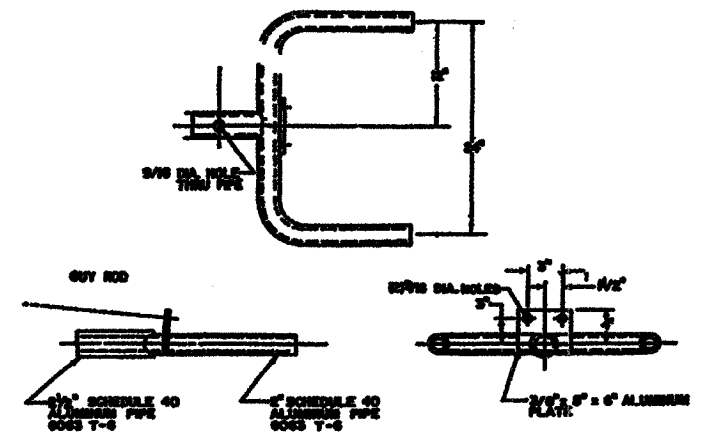


TEMPORARY LIGHT POLE DETAIL

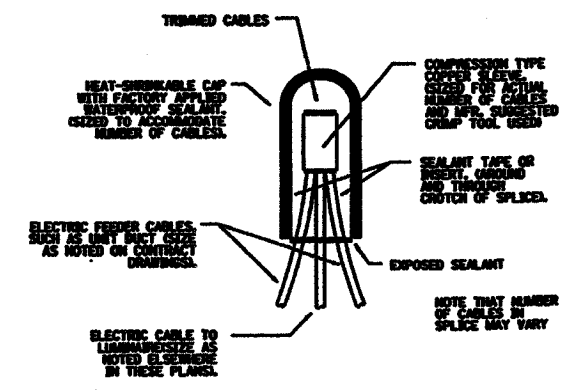


TEMPORARY LIGHT POLE GABLE ATTACHMENT DETAIL

NOTES:
1. GUY WIRES SHALL INCLUDE 6\"/>



DUPLIX BRACKET DETAIL



TYPICAL SPLICE DETAIL
N.T.S.

REVISIONS	
NAME	DATE
KWN	3-31-05

ILLINOIS DEPARTMENT OF TRANSPORTATION
U.S. ROUTE 14 OVER LAWRENCE CREEK
TEMPORARY LIGHTING DETAILS

SCALE: N.T.S.
DATE: 2-28-05
DRAWN BY: JPG
CHECKED BY: GAG



3287/TEMPLIGHTDLS.DGN