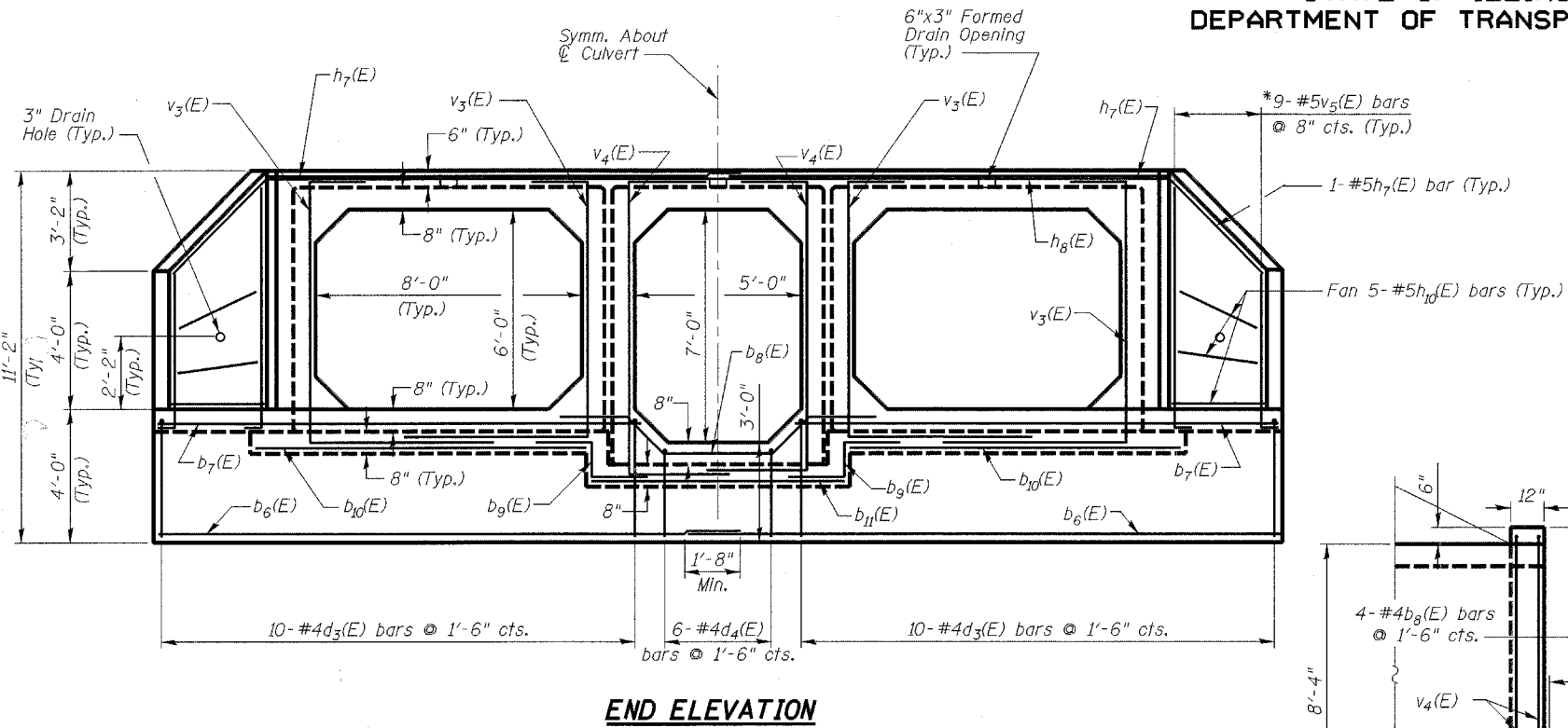


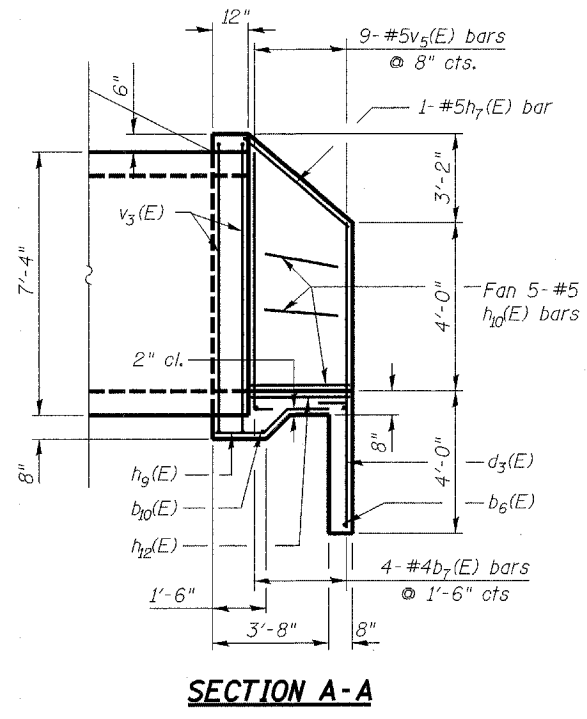
STATE OF ILLINOIS
DEPARTMENT OF TRANSPORTATION

| | | | | | |
|-----------------------|---------|---------|--------|-----|-------------|
| ROUTE NO. | SECTION | COUNTY | SHEETS | NO. | SHEET NO. 3 |
| F.A.P. 066 | 2(B&G)R | McHENRY | 66 | 43 | 6 SHEETS |
| FED. ROAD DIST. NO. 7 | | | | | ILLINOIS |

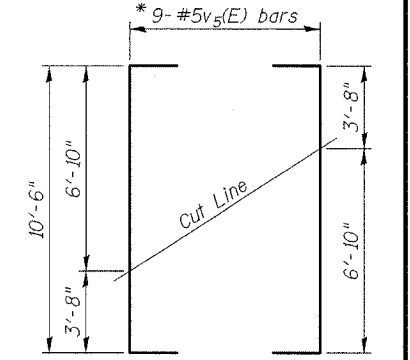
#62391



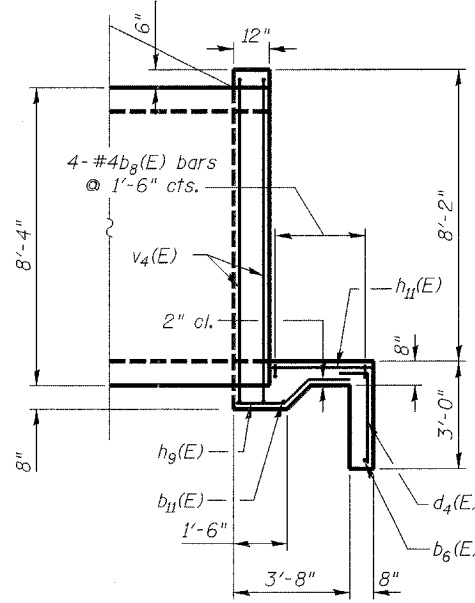
END ELEVATION



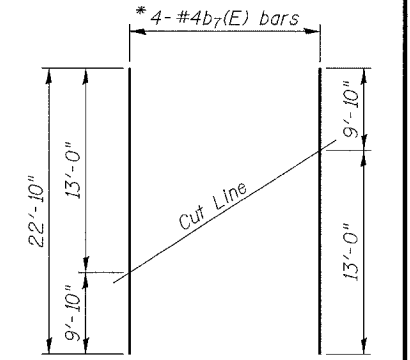
SECTION A-A



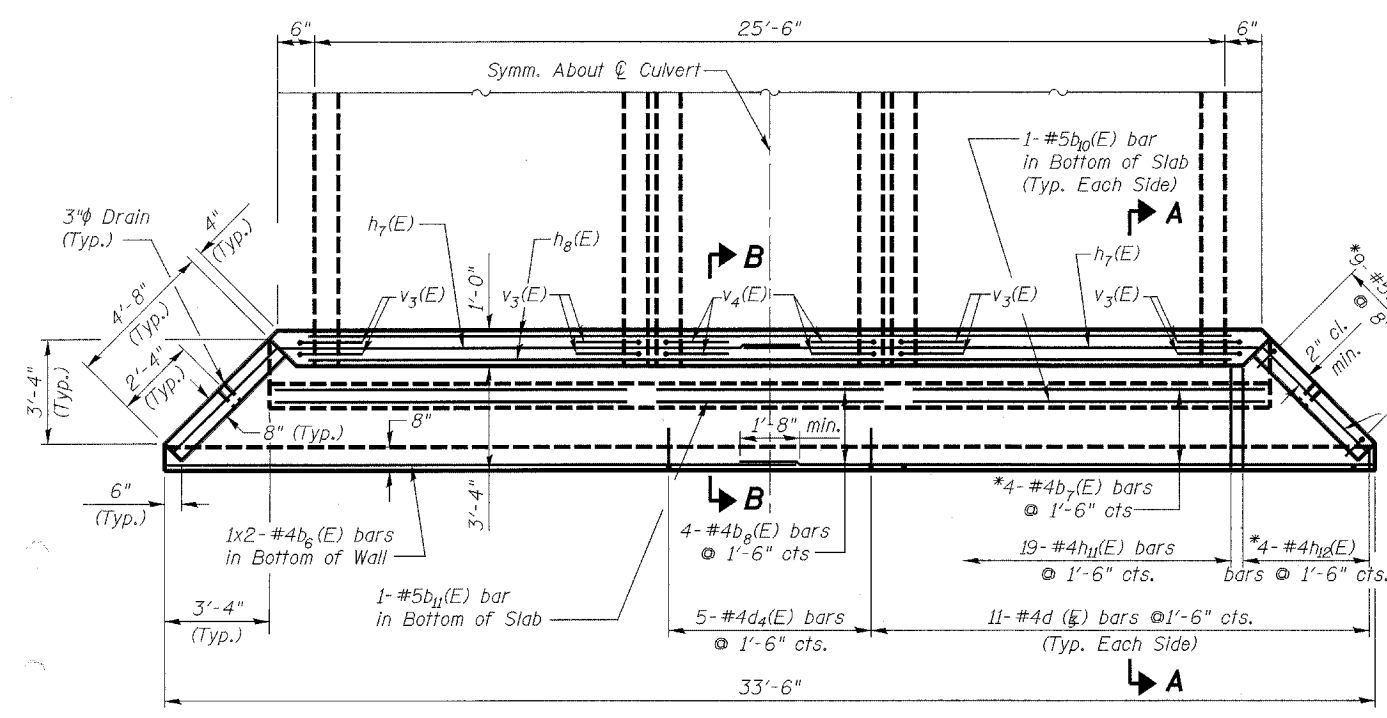
FIELD CUTTING DIAGRAM



SECTION B-B



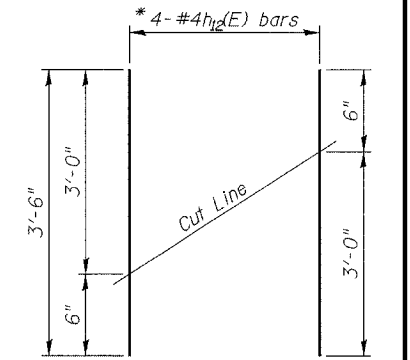
FIELD CUTTING DIAGRAM



END PLAN

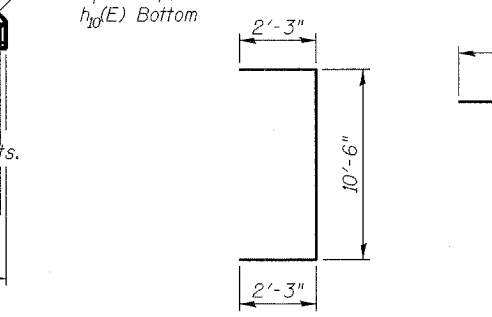
****BILL OF MATERIAL**

| Bar | No. | Size | Length | Shape |
|-----------------------------------|-----|------|----------|-------|
| $d_3(E)$ | 4 | #4 | 17'-5" | |
| $d_4(E)$ | 8 | #4 | 22'-10" | |
| $d_8(E)$ | 8 | #4 | 11'-0" | |
| $b_7(E)$ | 4 | #5 | 4'-4" | |
| $b_9(E)$ | 4 | #5 | 9'-10" | |
| $d_{11}(E)$ | 2 | #5 | 6'-4" | |
| $d_3(E)$ | 44 | #4 | 6'-4" | |
| $d_4(E)$ | 10 | #4 | 5'-4" | |
| $h_7(E)$ | 4 | #5 | 18'-11" | |
| $h_8(E)$ | 4 | #5 | 25'-6" | |
| $h_9(E)$ | 38 | #5 | 3'-3" | |
| $h_{10}(E)$ | 20 | #5 | 4'-3" | |
| $h_{11}(E)$ | 38 | #4 | 3'-0" | |
| $h_{12}(E)$ | 8 | #4 | 3'-6" | |
| $v_3(E)$ | 16 | #5 | 15'-9" | |
| $v_4(E)$ | 8 | #5 | 15'-3" | |
| $v_5(E)$ | 18 | #5 | 15'-0" | |
| Reinforcement Bars (Epoxy Coated) | | | Lbs. | 1700 |
| Concrete Structures | | | Cu. Yds. | 40 |

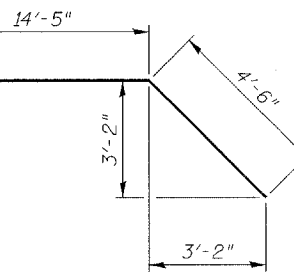


FIELD CUTTING DIAGRAM

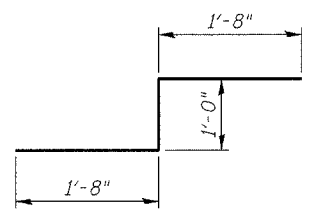
BARS $v_3(E)$ & $v_4(E)$



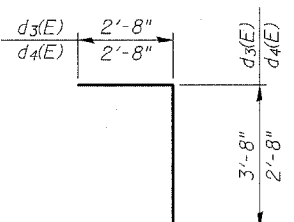
BAR $v_5(E)$



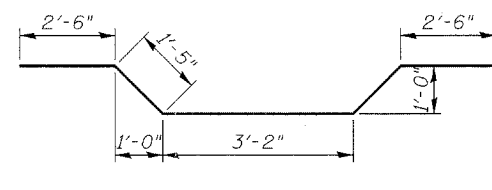
BAR $h_7(E)$



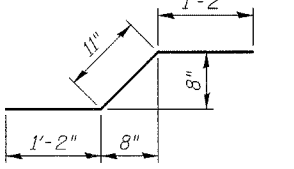
BAR $b_9(E)$



BARS $d_3(E)$ & $d_4(E)$



BAR $b_8(E)$



BAR $h_9(E)$

** For Information Only. The items in this table are not paid for separately, but are include in the cost of "Box Culvert End Sections."

The above table includes quantities for two box culvert end sections.

Reinforcement bars designated (E) shall be epoxy coated.

* Order $v_5(E)$, $b_7(E)$, and $h_{12}(E)$ bars full length. Cut to fit as shown and use remainder of bars in other side of apron.

BOX CULVERT END SECTION DETAILS
U.S. ROUTE 14
(NORTHWEST HIGHWAY)
OVER TRIBUTARY 'A'
TO LAWRENCE CREEK
FAP 066 SECTION 2(B&G)R
McHENRY COUNTY
STATION 107+00.00
STRUCTURE NO. 056-0075

| | | |
|----------|-----|----|
| DESIGNED | RFS | 20 |
| CHECKED | LLP | |
| DRAWN | JPG | |
| CHECKED | RFS | |

| | |
|----------|------------------------------------|
| EXAMINED | ENGINEER OF BRIDGE DESIGN |
| PASSED | ENGINEER OF BRIDGES AND STRUCTURES |