

STATE OF ILLINOIS
DEPARTMENT OF TRANSPORTATION
DIVISION OF HIGHWAYS

FAU RTE.	SECTION	COUNTY	TOTAL SHEETS	SHEET NO.
0291	2003-096 RS	WILL	29	1

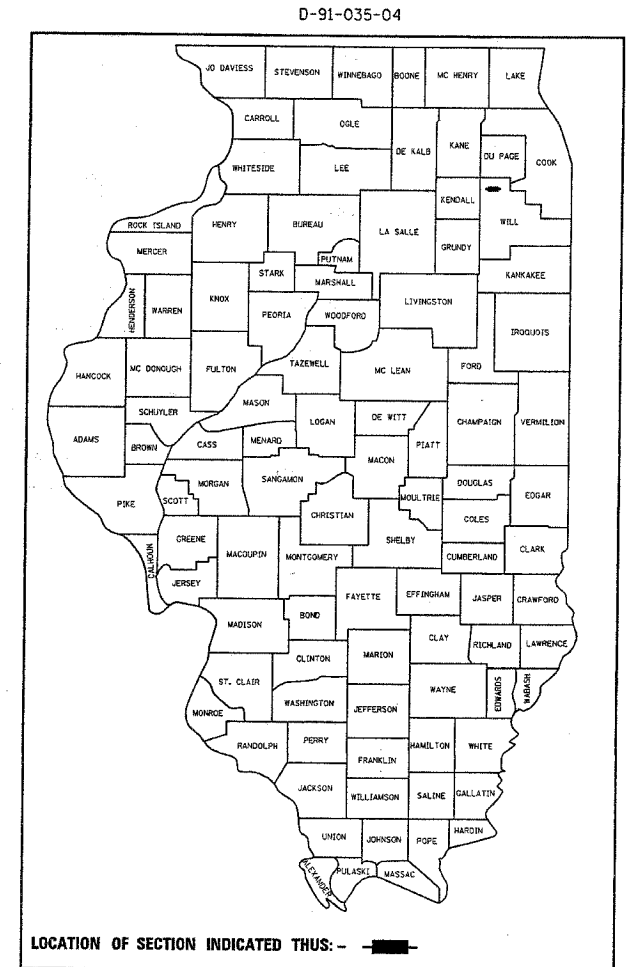
CONTRACT# 62672

FOR INDEX OF SHEETS, SEE SHEET NO. 2

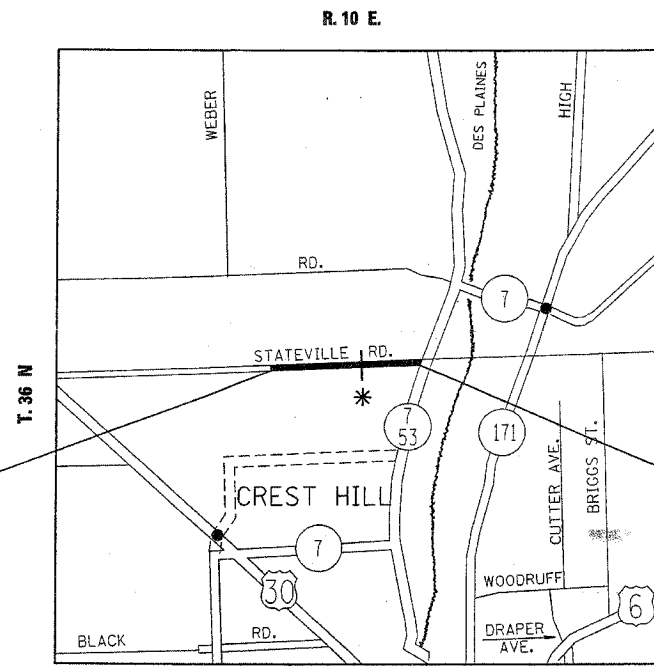
THE IMPROVEMENT IS LOCATED
IN THE CITY OF CREST HILL

PLANS FOR PROPOSED HIGHWAY

FAU ROUTE 0291 (DIVISION STREET/STATEVILLE ROAD)
STATEVILLE ENTRANCE TO IL. 53
SECTION: 2003-096 RS
RESURFACING (MAINTENANCE)
WILL COUNTY
C-91-035-04



*
STATION EQUATION
STA. 0+00 BACK =
STA. 0+00 AHEAD

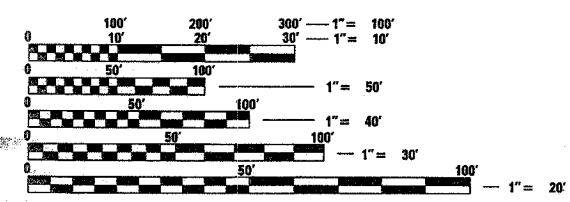


TRAFFIC DATA:
ADT 2000 = 5,100
SPEED LIMIT = 50 MPH

IMPROVEMENT BEGINS
STA. 51+84

IMPROVEMENT ENDS
STA. 26+78

LOCKPORT TOWNSHIP
GROSS LENGTH OF IMPROVEMENT = 7862 FT. = 1.490 MILES
NET LENGTH OF IMPROVEMENT = 7862 FT. = 1.490 MILES



FULL SIZE PLANS HAVE BEEN PREPARED USING STANDARD ENGINEERING SCALES. REDUCED SIZED PLANS WILL NOT CONFORM TO STANDARD SCALES. IN MAKING MEASUREMENTS ON REDUCED PLANS, THE ABOVE SCALES MAY BE USED.

J.U.L.I.E.
JOINT UTILITY LOCATION INFORMATION FOR EXCAVATION
1-800-892-0123

CONTRACT NO. 62672

STATE OF ILLINOIS
DEPARTMENT OF TRANSPORTATION
DIVISION OF HIGHWAYS

SUBMITTED April 29, 2005

Dina O'Keefe
DEPUTY DIRECTOR OF HIGHWAYS, REGION ENGINEER

July 1, 2005
Mike Hine
ENGINEER OF DESIGN AND ENVIRONMENT

July 1, 2005
Victoria Moders
DIRECTOR OF HIGHWAYS, CHIEF ENGINEER

PRINTED BY THE AUTHORITY
OF THE STATE OF ILLINOIS

DISTRICT 1 DESIGN PLAN PREPARATION ENGINEER: KEN ENG / JENPAI CHANG (847)705-4432