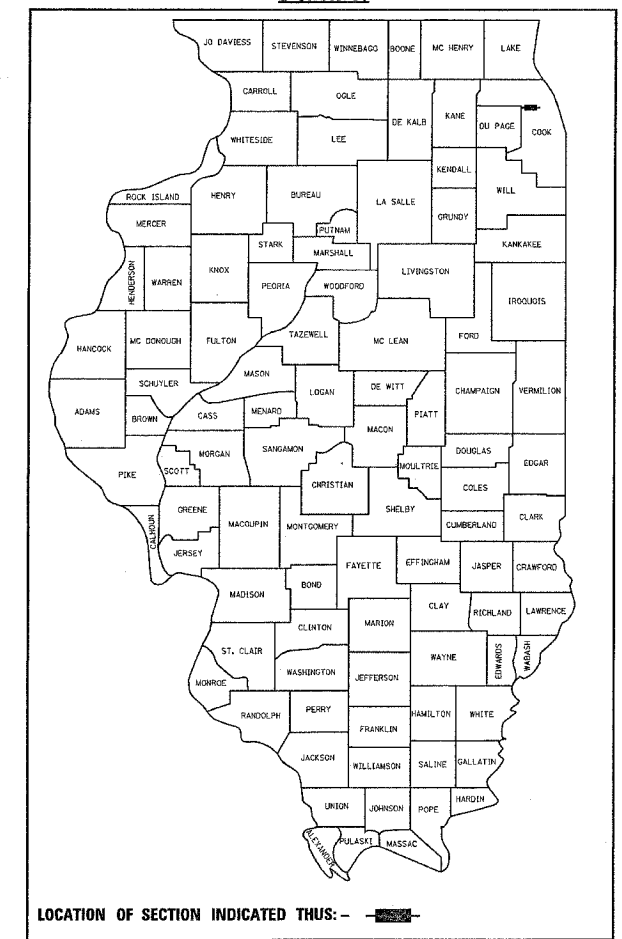


FAI	SECTION	COUNTY	TOTAL SHEETS	SHEET NO.
290	2004-003 I	COOK	14	1

CONTRACT NO. 62720

D-91-146-04



LOCATION OF SECTION INDICATED THUS: - [shaded box] -

STATE OF ILLINOIS
DEPARTMENT OF TRANSPORTATION
DIVISION OF HIGHWAYS
PLANS FOR PROPOSED
NOISE WALL REPAIR
F.A.I. ROUTE: 290 (INTERSTATE 290 - WB)
TWO LOCATIONS WEST OF WOLF ROAD
SECTION: 2004-003 I
COOK COUNTY
C-91-146-04

FOR INDEX OF SHEETS, SEE SHEET NO. 2

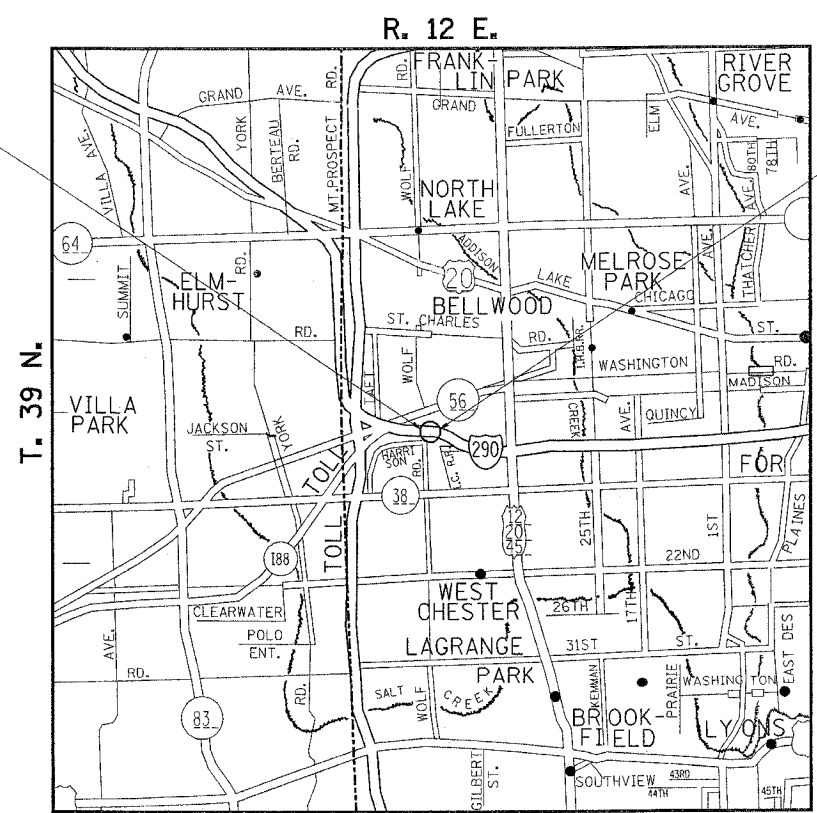
THE IMPROVEMENT IS LOCATED IN THE VILLAGE OF HILLSIDE

LOCATION 1
 IMPROVEMENT BEGINS
 STA. 311+050.889
 IMPROVEMENT ENDS
 STA. 311+062.889

LOCATION 2
 IMPROVEMENT BEGINS
 STA. 311+090.889
 IMPROVEMENT ENDS
 STA. 311+098.889

TRAFFIC DATA

2002 ADT = 186,800
 POSTED SPEED LIMIT = 55 MPH



J.U.L.I.E.
 JOINT UTILITY LOCATION INFORMATION FOR EXCAVATION
 1-800-892-0123

CONTRACT NO. 62720

PROVISO TOWNSHIP
 LOCATION 1. GROSS LENGTH OF IMPROVEMENT = 40 FEET
 LOCATION 2. GROSS LENGTH OF IMPROVEMENT = 23 FEET
TOTAL : GROSS LENGTH OF IMPROVEMENT = 63 FEET

STATE OF ILLINOIS
 DEPARTMENT OF TRANSPORTATION
 DIVISION OF HIGHWAYS

SUBMITTED June 7, 20 05
Diane O'Keefe
 DEPUTY DIRECTOR OF HIGHWAYS, REGION ENGINEER

July 1, 20 05
Mike Nene
 ENGINEER OF DESIGN AND ENVIRONMENT

July 1, 20 05
Victor Modest
 DIRECTOR, DIVISION OF HIGHWAYS

PRINTED BY THE AUTHORITY OF THE STATE OF ILLINOIS

*REF-
*REF-
*REF-

F.A.I. RTE.	SECTION	COUNTY	TOTAL SHEETS	SHEET NO.
290	2004-003 I	COOK	14	2
STA.	TO STA.			
FED. ROAD DIST. NO. 1		ILLINOIS	FED. AID PROJECT	

CONTRACT NO. 62720

SCOPE OF WORK:

(NOT IN ORDER OF PREFERENCE)

1. REMOVE THE THREE UNITS (2-LOCATION 1 AND 1-LOCATION 2) OF DAMAGED NOISE WALL PANELS AND THEIR CAPS.
2. CUT AND REMOVE THE UPPER SECTION OF DAMAGED POST, DESIGNATED D-59, (W8 X 31) @ LOCATION 1
3. REMOVE 39'-0" OF THE DAMAGED BARRIER WALL. (AS SHOWN) (16'-0" - LOCATION 1 AND 23'-0" - LOCATION 2)
4. PREPARE THE CUT SECTION OF D-59 FOR SPLICING TO A NEW W8 X 31 SECTION. (LOCATION 1)
5. SPLICE A NEW W8 X 31 SECTION OVER CUT SECTION OF D-59 USING A BUTT WELD AND ASSURING COMPLETE VERTICALITY AND PLUMBNESS OF THE NEW SECTION. (LOCATION 1)
6. STRAIGHTEN POSTS, D-58, D-59, D-65 AND D-66. (1-LOCATION 1 AND 2-LOCATION 2)
7. PAINT POSTS D-58, D-59, D-65 AND D-66 IN MATCHING COLORS WITH THE EXISTING POST'S COLOR, AS REQUIRED.
8. INSTALL THREE UNITS OF THE PRECAST NOISE WALL PANELS AND THEIR CAPS. (2-LOCATION 1 AND 1-LOCATION 2)
9. RECONSTRUCT THE 39'-0" SECTION OF BARRIER WALL. (AS SHOWN) (16'-0" LOCATION 1 AND 23'-0" LOCATION 2)
10. CLEAN THE CONSTRUCTION SITE, RESTORING THE SITE TO ITS ORIGINAL CONDITION AS CLOSE AS POSSIBLE.

INDEX OF SHEETS

SHEET NUMBER	DESCRIPTION
1	TITLE SHEET
2	INDEX OF SHEETS, SCOPE OF WORK, STATE STANDARDS, AND GENERAL NOTES
3	SUMMARY OF QUANTITIES
4	CURRENT SURVEY DATA
5	NOISE WALL REPAIR DETAIL (DETAILS)
6 - 13	EXISTING NOISE WALL DETAILS (FOR INFORMATION ONLY)
14	TC-17 TRAFFIC CONTROL DETAILS FOR FREEWAY SHOULDER CLOSURES, PARTIAL RAMP CLOSURES

LIST OF STATE STANDARDS

STANDARDS	DESCRIPTION
701400-02	APPROACH TO LANE CLOSURE, FREEWAY/EXPRESSWAY
701401-03	LANE CLOSURE, MULTILANE FOR SPEED >= 45 MPH
702001-05	TRAFFIC CONTROL DEVICES

GENERAL NOTES:

1. IN EXISTING PLANS CALL OUT W200 X 46 (METRIC) SECTION IS EQUIVALENT TO W8X31 (ENGLISH).
2. PLAN DIMENSIONS AND DETAILS RELATIVE TO THE EXISTING STRUCTURE HAVE BEEN TAKEN FROM THE EXISTING PLANS AND ARE SUBJECT TO NOMINAL CONSTRUCTION VARIATIONS. IT SHALL BE THE CONTRACTOR'S RESPONSIBILITY TO VERIFY SUCH DIMENSIONS AND DETAILS IN THE FIELD AND MAKE NECESSARY AND APPROVED ADJUSTMENTS PRIOR TO THE CONSTRUCTION OR ORDERING OF MATERIALS. SUCH VARIATIONS SHALL NOT BE CAUSE FOR ADDITIONAL COMPENSATION FOR A CHANGE IN THE SCOPE OF WORK. HOWEVER, THE CONTRACTOR WILL BE PAID FOR THE QUANTITY ACTUALLY FURNISHED AT THE UNIT PRICE BID FOR THE WORK.
3. THE CONTRACTOR SHALL USE EXTREME CARE DURING THE NOISE WALL REPAIR SUCH THAT NO DAMAGE OCCURS ON ANY OTHER PART OF THE NOISE WALL. IF ANY DAMAGE OCCURS DURING THE REPAIR THEN THAT SHALL BE CORRECTED AT CONTRACTOR'S EXPENSE.
4. ALL THE REPLACED UNITS, SUCH AS BARRIER WALL, NOISE WALL PANELS, NOISE WALL PANEL CAPS, AND NOISE WALL POSTS, SHALL BE IDENTICAL IN DESIGN, PATTERN AND COLOR TO THE EXISTING UNITS.
5. THE DAMAGED UPPER PORTION OF THE D-59 POST IN LOC. 1 SHALL BE CUT AND REMOVED AFTER LEAVING A LOWER 12" STRAIGHT SECTION OF THE POST. CUTTING, REMOVAL AND DISPOSAL OF STEEL SECTION ARE INCLUDED IN THE COST OF FURNISHING AND ERECTING STRUCTURAL STEEL. THIS STRAIGHT SECTION SHALL BE USED FOR CLAMPING AND SHALL BE GROUND SMOOTH TO ASSURE A GOOD QUALITY BUTT WELD FOR SPLICING THE NEW W8 X 31 SECTION ON THE CUT SECTION OF THE D-59 POST. THE CUT SECTION SHALL RENDER A CUT SURFACE THAT SHALL ENSURE VERTICAL SPLICING OF THE NEW SECTION AND ASSURE THE FULL PLUMBNESS OF THE NEWLY SPLICED SECTION FOR THE INSTALLATION OF THE NEW PRECAST PANELS. PREPARING AND WELDING IS INCLUDED IN THE COST OF FURNISHING AND ERECTING STRUCTURAL STEEL.
6. THE SPLICING OF THE D-59 POST @ LOCATION 1 SHALL CONFORM TO THE RELEVANT REQUIREMENTS OF SECTION 512 OF THE STANDARD SPECIFICATIONS. OTHER TYPES OF SPLICING MAY BE ALLOWED SUBJECT TO THE APPROVAL OF THE ENGINEER. ANY PROPOSAL BY THE CONTRACTOR TO USE AN ALTERNATE SPLICE METHOD MUST INCLUDE ADEQUATE DOCUMENTATION DEMONSTRATING THAT FULL TENSION, SHEAR AND BENDING CAPACITIES WILL BE MET AND IT WILL NOT INTERFERE WITH THE PANEL'S ERECTION. APPROPRIATE WELDER QUALIFICATIONS WILL BE REQUIRED FOR POSITIONS AND PROCESSES USED IN WELD SPLICING THE POST. NONDESTRUCTIVE TESTING OF COMPLETED WELDS WILL BE LIMITED TO VISUAL INSPECTION.
7. THE CONTRACTOR SHALL WORK IN A FASHION SUCH AS TO CAUSE MINIMAL INCONVENIENCE AND DELAYS TO THE MOTORING PATRONS.
8. BEFORE STARTING ANY EXCAVATION, THE CONTRACTOR SHALL CALL "J.U.L.I.E." AT (800) 892-0123 FOR FIELD LOCATIONS OF BURIED ELECTRIC, TELEPHONE, WATER, CABLE, GAS AND OTHER UTILITIES. (48 HOUR NOTIFICATION IS REQUIRED).
9. THE CONTRACTOR SHALL COORDINATE CONSTRUCTION ACTIVITIES WITH UTILITY COMPANIES.
10. THE CONTRACTOR WILL NOT BE ALLOWED TO SET UP A YARD OR FIELD OFFICE ON STATE PROPERTY WITHOUT WRITTEN PERMISSION FROM THE DEPARTMENT.
11. WHEN ARTIFICIAL LIGHTING IS UTILIZED IN NIGHT OPERATIONS, THE CONTRACTOR SHALL EXERCISE THE UTMOST PRECAUTION IN PREVENTING ADVERSE VISIBILITY TO THE MOTORING PUBLIC AND ADJOINING RESIDENTIAL AREAS.
12. ANY DAMAGE TO EXISTING PAVEMENT MARKINGS OUTSIDE THE AREA OF CONCRETE REMOVAL SHALL BE REPLACED AT THE CONTRACTOR'S EXPENSE.
13. THE CONTRACTOR SHALL CONTACT THE DISTRICT ONE TRAFFIC CONTROL SUPERVISOR AT (847) 705-4151 A MINIMUM OF 72 HOURS IN ADVANCE OF BEGINNING WORK.
14. THE CONTRACTOR SHALL BE REQUIRED TO PROVIDE ACCESS TO ABUTTING PROPERTIES AT ALL TIMES DURING THE CONSTRUCTION OF THIS PROJECT.
15. DO NOT SCALE PLANS FOR CONSTRUCTION DIMENSIONS.

LEGEND:

LOC. = LOCATION

REVISIONS	
NAME	DATE

ILLINOIS DEPARTMENT OF TRANSPORTATION
INTERSTATE 290
NOISE WALL REPAIR
INDEX OF SHEETS, GENERAL NOTES
& STATE STANDARDS

SCALE: VERT.
 HORIZ.
 DATE: MAY, 2005.

DRAWN BY: SB/MVT
 CHECKED BY: RSS

*REF-
*REF-
*REF-

F.A.L. RTE.	SECTION	COUNTY	TOTAL SHEETS	SHEET NO.
290	2004-003 I	COOK	14	3
STA.		TO STA. _____		
FED. ROAD DIST. NO. 1		ILLINOIS	FED. AID PROJECT	

CONTRACT NO. 62720

SUMMARY OF QUANTITIES

CODE NO.	ITEM DESCRIPTION	UNIT	QUANTITY	LOCATION 1		LOCATION 2	
				MCHD No. 678158	MCHD No. 713404	MCHD No. 678158	MCHD No. 713404
			URBAN TOTAL	CONSTRUCTION TYPE CODE SFTY-2A	CONSTRUCTION TYPE CODE SFTY-2A		
50500405	FURNISHING AND ERECTING STRUCTURAL STEEL	POUND	400	400			
X0301423	NOISE ABATMENT WALL, GROUND MOUNTED	SQ. FT.	711	474	237		
63700600	CONCRETE BARRIER, SINGLE FACE (SPECIAL)	FOOT	39	16	23		
X7011015	TRAFFIC CONTROL AND PROTECTION (EXPRESSWAYS)	L.SUM	1	0.5	0.5		
67100100	MOBILIZATION	L.SUM	1	0.5	0.5		
50102400	CONCRETE REMOVAL	CU. YDS.	3.3	1.3	2.0		
X7015000	CHANGEABLE MESSAGE SIGN	CAL MO	1	0.5	0.5		
X7013820	TRAFFIC CONTROL SURVEILLANCE, EXPRESSWAYS	CAL DA	30	15	15		
X0322390	STRAIGHTEN BENT MEMBER	L.SUM	1	0.3	0.7		

REVISIONS	
NAME	DATE

ILLINOIS DEPARTMENT OF TRANSPORTATION

INTERSTATE 290
NOISE WALL REPAIR
SUMMARY OF QUANTITIES

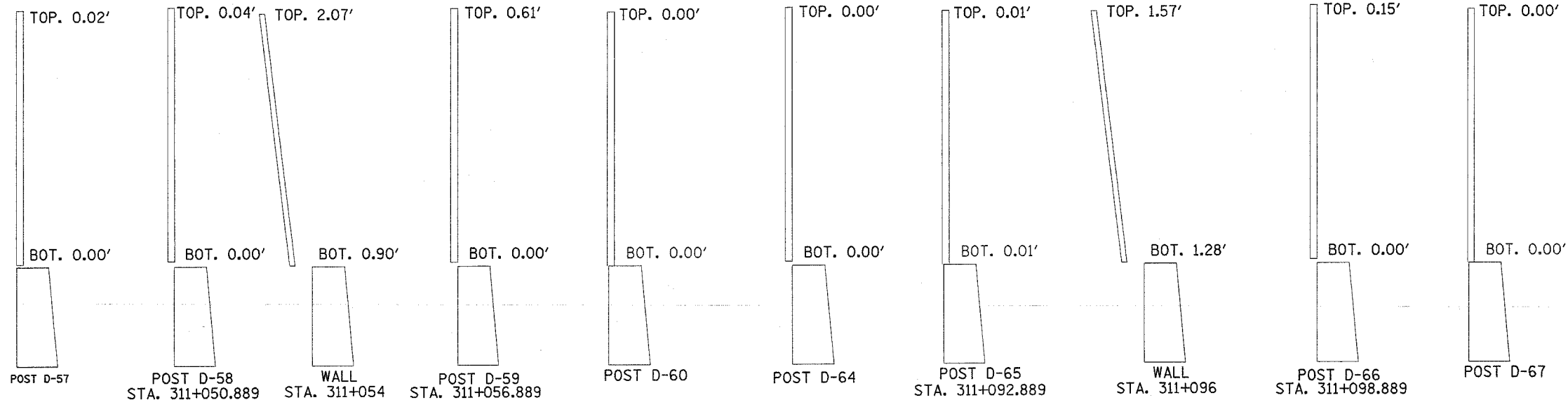
SCALE: VERT.
HORIZ.
DATE: APRIL, 2005.

DRAWN BY: SB/MVT
CHECKED BY: RSS

REF -
REF -
REF -

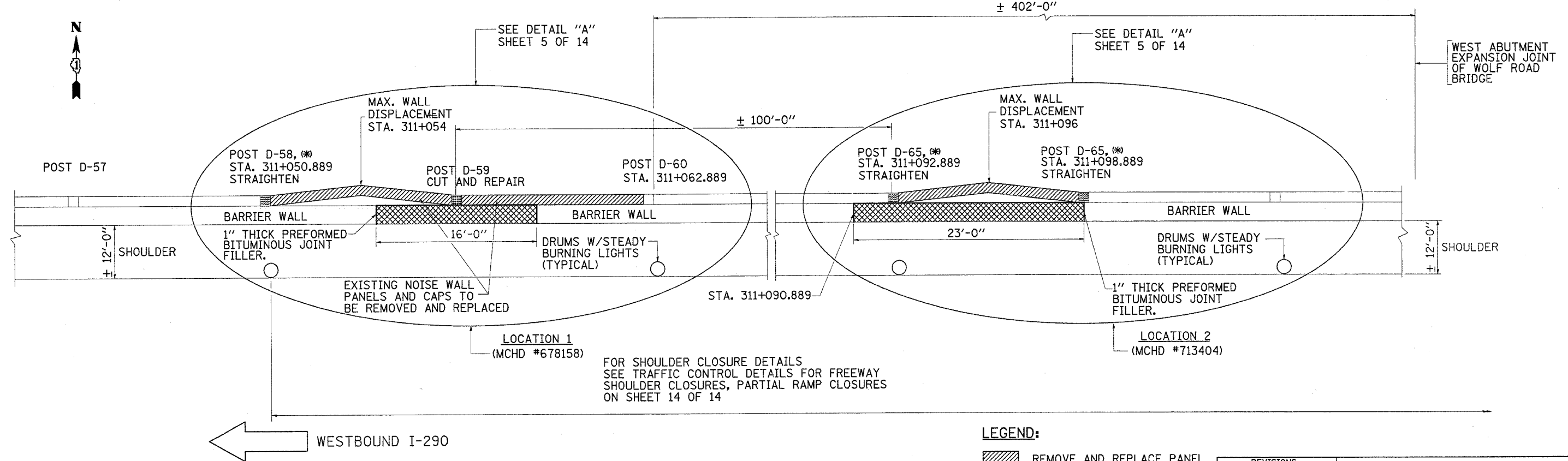
F.A.I. RTE.	SECTION	COUNTY	TOTAL SHEETS	SHEET NO.
290	2004-003 I	COOK	14	4
STA.		TO STA.		
FED. ROAD DIST. NO. 1 ILLINOIS FED. AID PROJECT				

CONTRACT NO. 62720



NOTES:
 (***) DEVIATIONS FROM PLUMB ARE BASED ON THE TOP OF THE BARRIER - WALL AT THE BACK BEING 0.00'
 (**) COST OF STRAIGHTENING POSTS D-58, D-65 AND D-66 INCLUDED IN COST OF "STRAIGHTEN BENT MEMBERS"
 STATIONING OF POSTS ARE METRIC. POSTS ARE SPACED 6 m c to c

DEVIATIONS OF WALL AND POSTS AT IMPACT LOCATIONS (***)
 (WESTBOUND LANE LOOKING EAST)



PLAN OF POSTS, AND DAMAGED NOISE AND BARRIER WALLS

LEGEND:

- REMOVE AND REPLACE PANEL
- REPAIR POST
- REMOVE AND REPLACE BARRIER WALL SECTION
- STRAIGHTEN POST

REVISIONS	
NAME	DATE

ILLINOIS DEPARTMENT OF TRANSPORTATION

**INTERSTATE 290
 NOISE WALL REPAIR
 CURRENT SURVEY DATA**

SCALE: VERT. _____
 HORIZ. _____
 DATE: MAY, 2005.

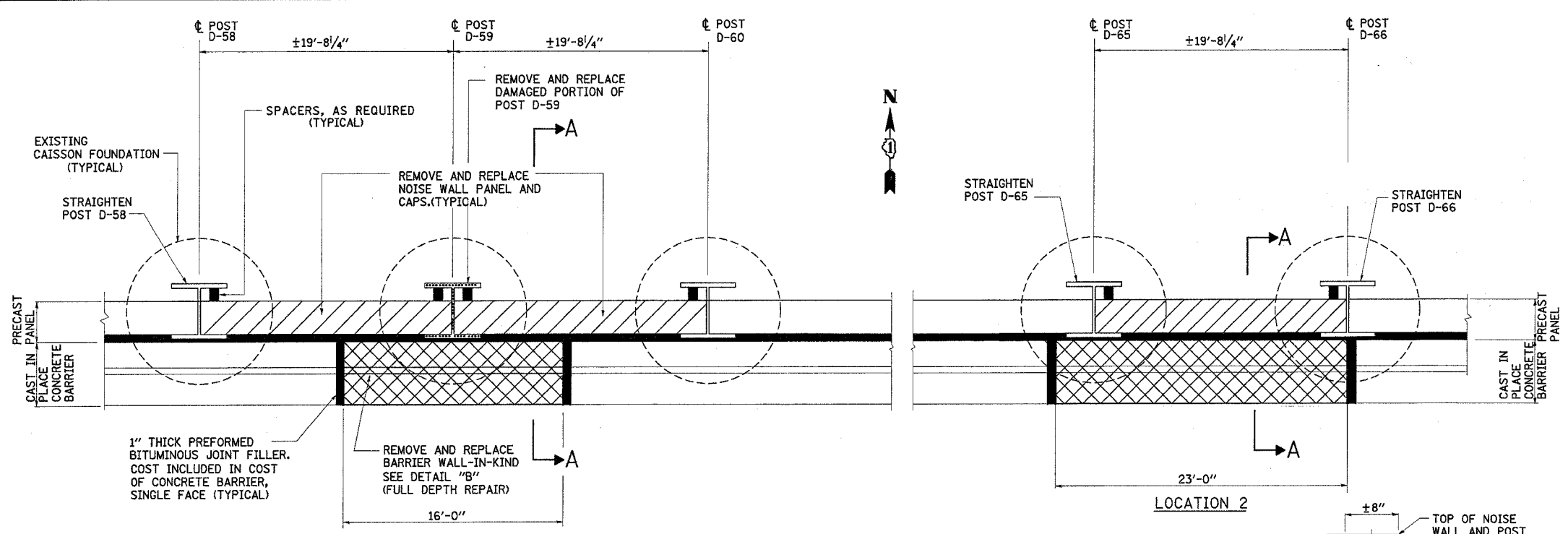
DRAWN BY: SB/MVT
 CHECKED BY: RSS

DISTRICT ONE DESIGN PLAN PREPARATION ENGINEER:
 KEN ENG/ROBERT BORO (847) 705-4178

REF-
REF-
REF-

F.A.I. RTE.	SECTION	COUNTY	TOTAL SHEETS	SHEET NO.
290	2004-003 I	COOK	14	5
STA.		TO STA.		
FED. ROAD DIST. NO. 1		ILLINOIS	FED. AID PROJECT	

CONTRACT NO. 62720



NOTES:

1. THE CONTRACTOR SHALL USE CAST-IN- PLACE BARRIER.
2. BARRIER WALL REINFORCEMENT SHALL CONSIST OF 4-#4 DEFORMED HORIZONTAL REINFORCEMENT BARS ON 9-INCH CENTERS AND #4 DEFORMED VERTICAL REINFORCEMENT BARS ON 2'-7" CENTERS. COST OF REINFORCEMENT INCLUDED IN CONCRETE BARRIER SINGLE FACE.

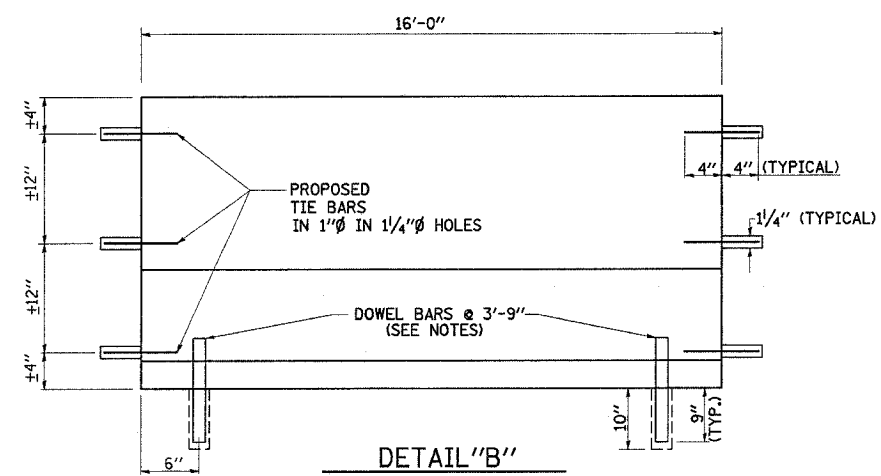
ALTERNATIVELY, THE CONTRACTOR MAY USE WELDED WIRE FABRIC, 6 x 6 - W4, WEIGHING APPROXIMATELY 58 LBS PER 100 SQ. FT. CONFORMING TO THE REQUIREMENTS OF AASHTO M-55. COST OF WELDED WIRE FABRIC INCLUDED IN COST OF CONCRETE BARRIER SINGLE FACE.
3. DOWEL BARS SHALL BE 1"Ø DEFORMED REINFORCEMENT BARS AND OF A MINIMUM LENGTH AND MINIMUM EMBEDMENT AS SHOWN. DOWEL BARS THAT ARE PLACED IN EXISTING RIGID PAVEMENT OR EXISTING PAVED SHOULDER SURFACE SHALL BE SET EPOXY GROUTED IN DRILLED HOLES TO THE SATISFACTION OF THE ENGINEER.
4. DOWEL BARS SHALL BE ON 3'-9" CENTERS.
5. AT LOCATIONS WHERE CONCRETE BARRIER WALL ABUTS A RIGID OR AN EXISTING STRUCTURE AN 1" THICK PREFORMED BITUMINOUS JOINT FILLER CONFORMING TO THE SHAPE OF THE BARRIER WALL SHALL BE INSTALLED. CONCRETE NAILING OR OTHER SUITABLE METHODS SHALL BE USED TO HOLD THE BITUMINOUS JOINT FILLER IN PLACE.
6. COST OF TIE BARS, DOWEL BARS, DRILLING AND GROUTING FOR TIE BARS AND DOWEL BARS INCLUDED IN THE COST OF CONCRETE BARRIER, SINGLE FACE.
7. REPLACEMENT BARRIER WALLS SHALL BE FORMED UP AS SOON AS THE DAMAGED BARRIER WALLS ARE REMOVED. INSTALL FEW EXTRA TEMPORARY TRAFFIC BARRELS.

LOCATION 1

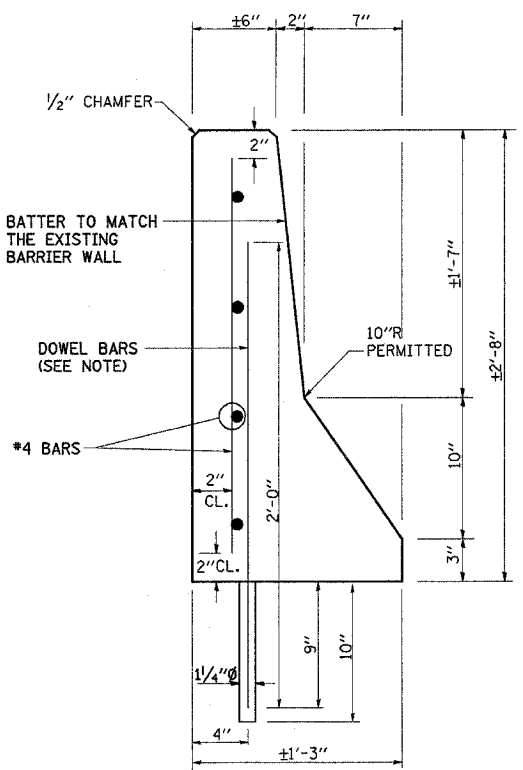
LOCATION 2

DETAIL "A"

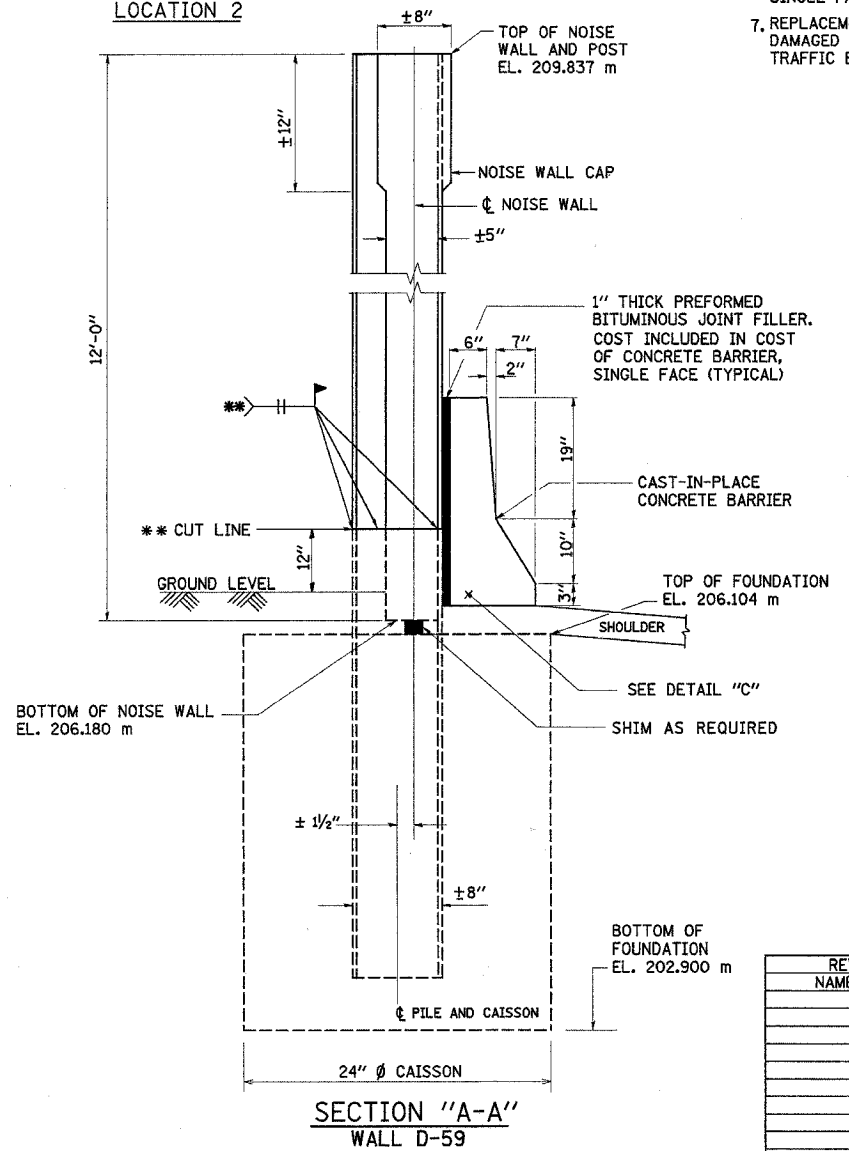
(REPLACEMENT UNITS SHALL MATCH IN DESIGN PATTERN AND COLOR WITH THE EXISTING UNITS).



DETAIL "B"
FULL DEPTH REPAIR



DETAIL "C"
SINGLE FACE BARRIER



SECTION "A-A"
WALL D-59

NOTE:

ALL BARRIER WALL REPAIR SHALL BE COMPLETED IN ACCORDANCE WITH SECTION 637 OF THE STANDARD SPECIFICATIONS AND AS SHOWN ON THE PLANS. ALL PROPOSED DOWEL BARS AND TIE BARS SHALL BE DRILLED AND GROUTED IN PLACE. REINFORCEMENT SHALL BE INCLUDED AS SHOWN IN DETAIL "C" AND DESCRIBED IN SECTION 637 OF THE STANDARD SPECIFICATIONS EXCEPT WHEN A REINFORCEMENT CAGE IS ENCOUNTERED. IN SUCH A CASE, THE CONTRACTOR SHALL REMOVE THE DAMAGED PORTIONS OF THE CAGE AND SHALL REPLACE IT WITH BARS OF THE SAME SIZE AND SPACING. THE SCOPE OF REPAIR SHALL BE AS SHOWN ON THE PLANS AND APPROVED BY THE ENGINEER PRIOR TO CONSTRUCTION.

** CUT POST D-59 12" ABOVE GROUND. REMOVE THE UPPER SECTION OF THE POST AND SPLICE A NEW SECTION OF W8 X 31 OVER THE LOWER PORTION OF POST D-59. SPlicing SHALL BE DONE USING A BUTT WELD. THE NEW SECTION OF W8 X 31 WHEN SPLICED SHALL MATCH WITH THE HEIGHT OF THE EXISTING POST D-59. PAINT THE NEW SECTION OF W8 X 31 WITH A MATCHING COLOR.

REVISIONS	
NAME	DATE

ILLINOIS DEPARTMENT OF TRANSPORTATION

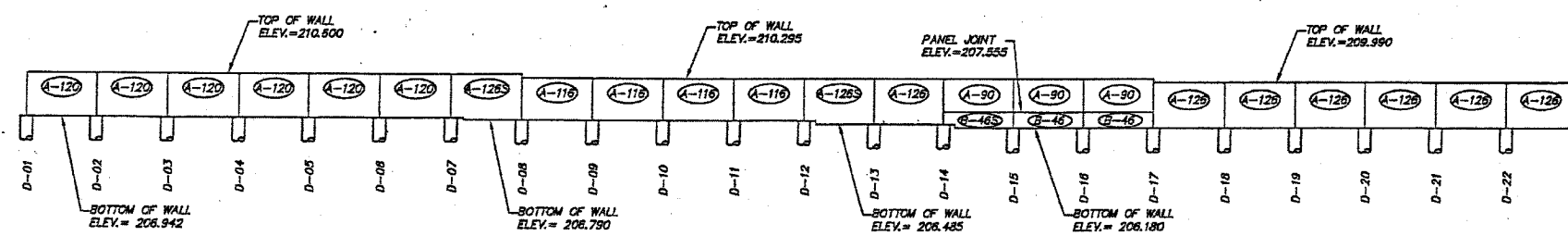
INTERSTATE 290
NOISE WALL REPAIR
(DETAILS)

SCALE: VERT.
HORIZ.
DATE: MAY, 2005.

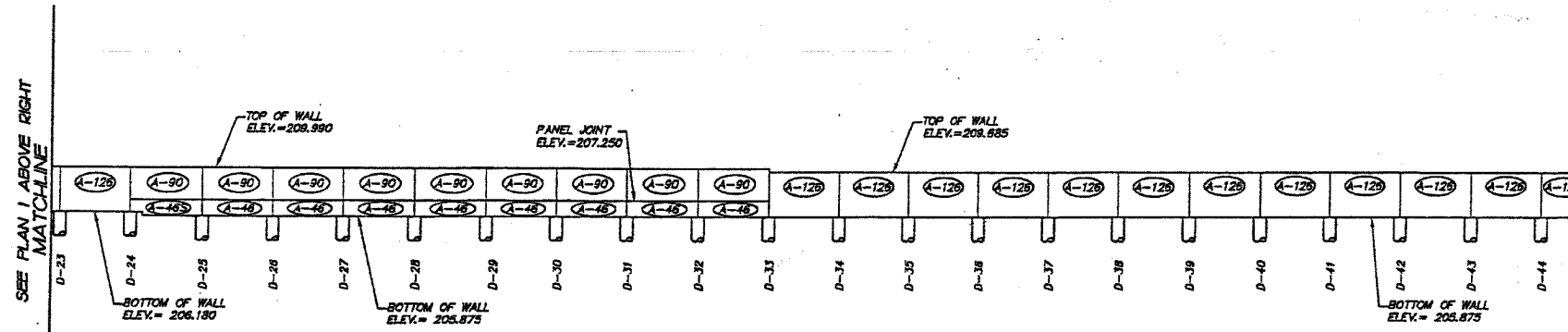
DRAWN BY: SB/MVT
CHECKED BY: RSS

62720

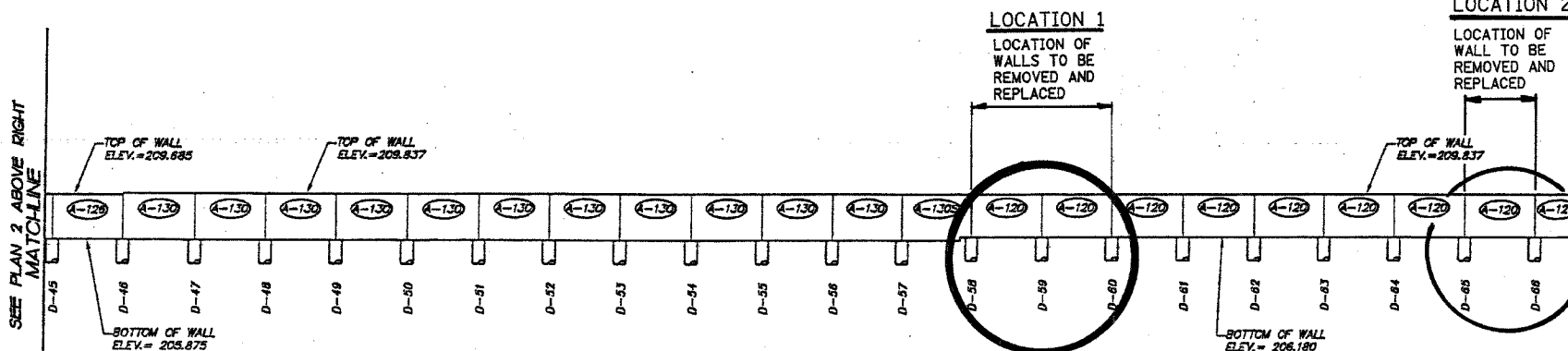
SHEET NO. 8



ELEVATION 1: WALL D



ELEVATION 2: WALL D



ELEVATION 3: WALL D

MATCHLINE
SEE PLAN 2 BELOW LEFT

MATCHLINE
SEE PLAN 3 BELOW LEFT

MATCHLINE
SEE SHEET NO. 142

FOR INFORMATION ONLY

NOTE:
A-XXX PANELS INCLUDE A CAP.

DATE: 3-09-2001	SCALE: 1"=20'	PREPARED BY: PEC	SMITH ENGINEERING CONSULTANTS, INC.
DRAWN BY: JMD	CHK BY: JMD	PROJECT NO: C-91-279-99	2820 ROUTE 176 PRAIRIE GROVE, IL. 60012
REG. NO: 000723-14	REG. NO: 000723-14	815-469-4645	FAX 469-6865
REG. JOB NUMBER: SW1025	REG. JOB NUMBER: SW1025	815-469-4645	www.smitheng.com
FOR CONSTRUCTION		FOR CONSTRUCTION	FOR CONSTRUCTION
USE REVIEW		USE REVIEW	USE REVIEW
DOT REVIEW		DOT REVIEW	DOT REVIEW
DRAWING HISTORY		DRAWING HISTORY	DRAWING HISTORY
NO.	DATE	DESCRIPTION	REVISIONS
1	8-15-01	MAN RCD	
2	8-28-01	MAN RCD	
3	9-04-01	MAN RCD	

GROUND MOUNTED NOISE ABATEMENT WALL
ELEVATION: WALL D

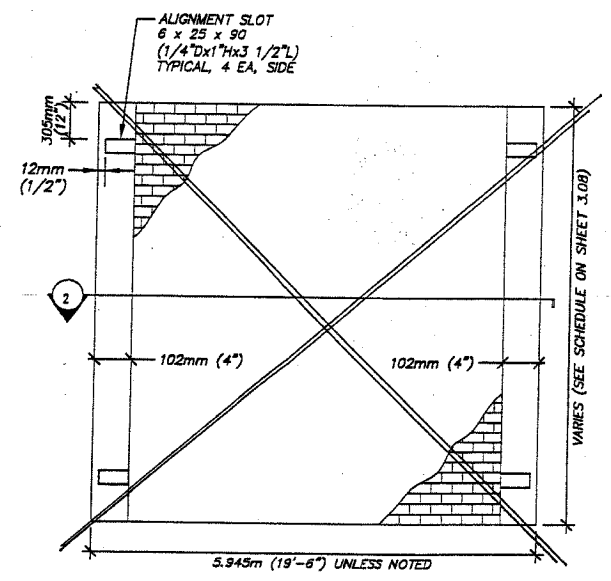
C-91-279-99
CIP 1-99-5900

2.41

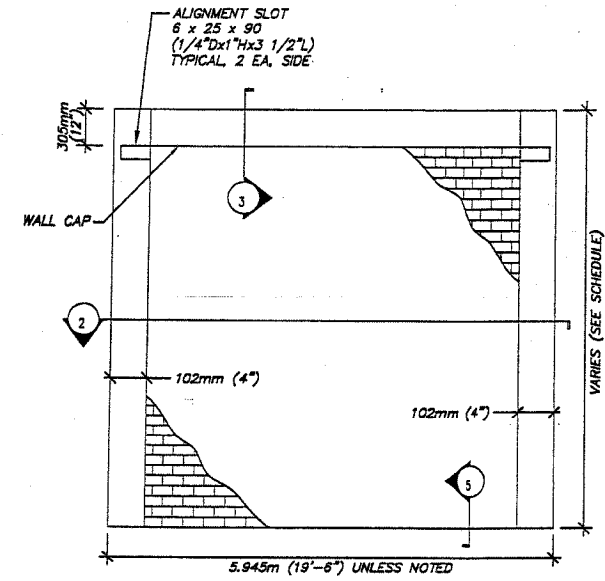
COMP. NUMBER 2.41

62720

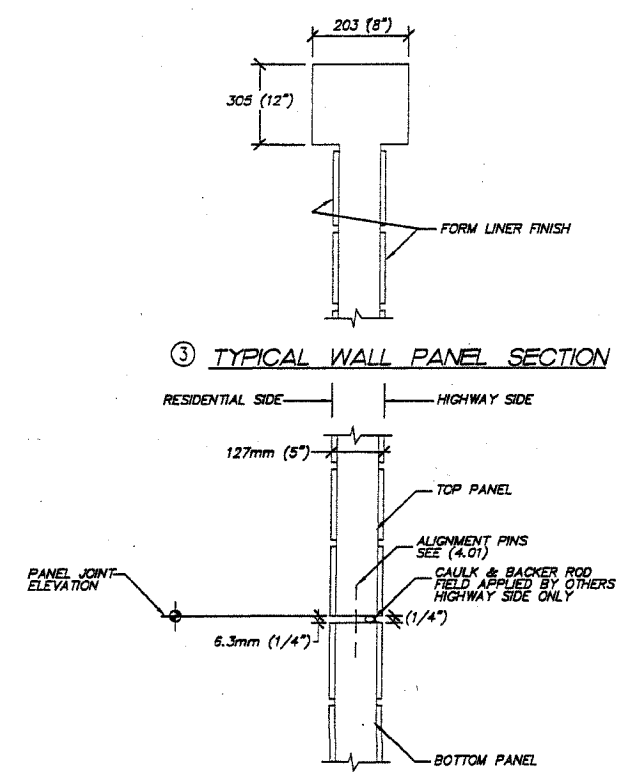
SHEET NO. 10



BOTTOM WALL PANEL ELEVATION

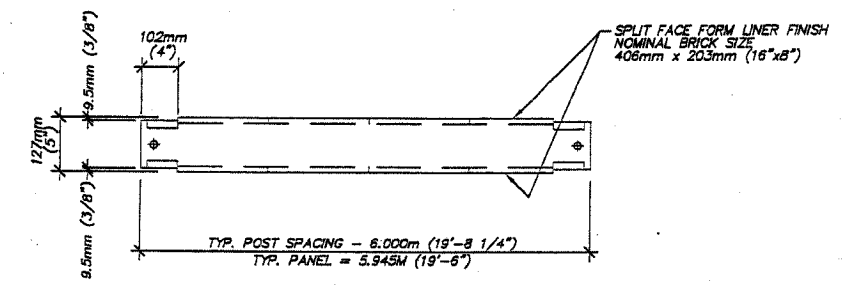


CAPPED WALL PANEL ELEVATION



③ TYPICAL WALL PANEL SECTION

⑤ TYPICAL CAPPED WALL PANEL SECTION



② TYPICAL WALL PANEL SECTION

FOR INFORMATION ONLY

APPROVED
For Main Dimensions and Materials Only
JUL 06 2001
Ralph E. Anderson
Engineer of Bridges and Traffic Structures

NOTE:
1. REINFORCING BAR DESIGNATIONS SHOW THE SMALLEST METRIC AND (SMALLEST ENGLISH) BARS WHICH WILL MEET DESIGN REQUIREMENTS. ENGLISH SIZES NOTED IN (PARENTHESIS).

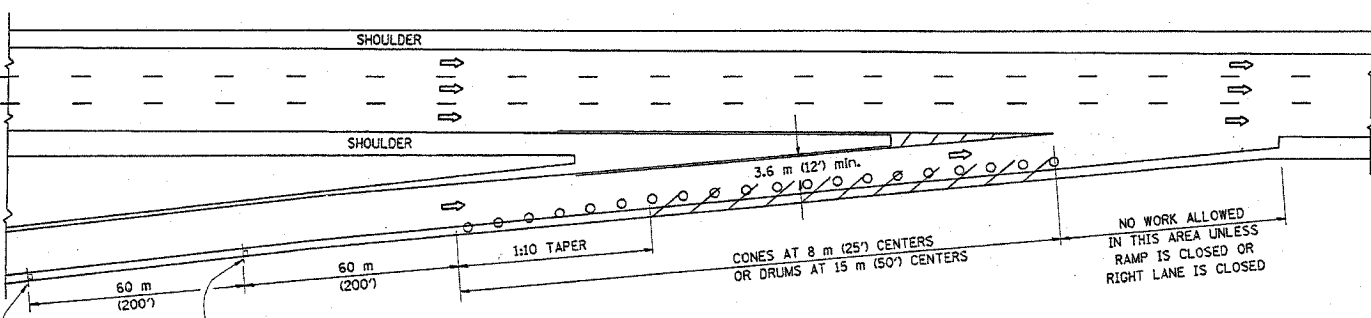
DATE: 3-09-2001	SCALE: 1/2" = 1'-0"	DATE: 3-09-2001	SCALE: 1/2" = 1'-0"
DRAWN BY: MAF	CHECK BY: RGD	DRAWN BY: MAF	CHECK BY: RGD
PROJECT NO. PHS-000753-14	PEC JOB NUMBER SW1055	PROJECT NO. PHS-000753-14	PEC JOB NUMBER SW1055
PREPARED BY: PEC		PREPARED BY: PEC	
PRESTRESS ENGINEERING CORPORATION 2220 ROUTE 176 PRAIRIE GROVE, IL 60012 815-459-4545		SMITH ENGINEERING CONSULTANTS, INC. PLANNERS 2001 STATE PARKWAY, SUITE 101 PRAIRIE GROVE, IL 60012 815-459-8855 www.smithengineering.com	
C-91-279-99		C-91-279-99	
CIP 1-99-5900		CIP 1-99-5900	
GROUND MOUNTED NOISE ABATEMENT WALL HILLSIDE INTERCHANGE COOK CO. I.		TYPICAL PANEL DETAILS GROUND MOUNTED NOISE ABATEMENT WALL HILLSIDE INTERCHANGE COOK CO. I.	
DRAWING HISTORY		DRAWING HISTORY	
MARK	DESCRIPTION	DATE	REVISIONS
1	REVISED NOTES	5-25-01	MAF/RGD
2	REVISED NOTES	5-04-01	MAF/RGD
3	REVISED NOTES	6-15-01	MAF/RGD
4	REVISED NOTES		
5	REVISED NOTES		
6	REVISED NOTES		
7	REVISED NOTES		
8	REVISED NOTES		
3.02			
COMP. NUMBER 0075301-5-4-01			

PARTIAL RAMP CLOSURE DETAILS

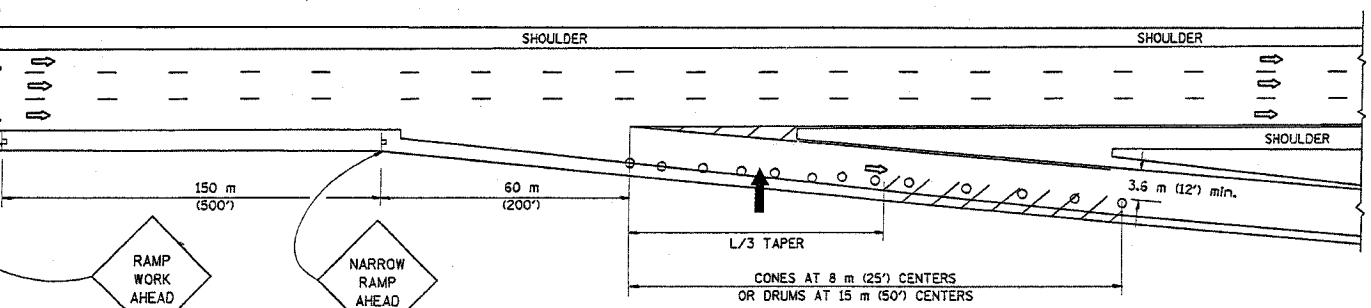
SHOULDER CLOSURE DETAILS

F.A. RTE.	SECTION	COUNTY	TOTAL SHEETS	SHEET NO.
290	2004-003	COOK	14	14
STA.		TO STA.		
FED. ROAD DIST. NO.		ILLINOIS FED. AID PROJECT		

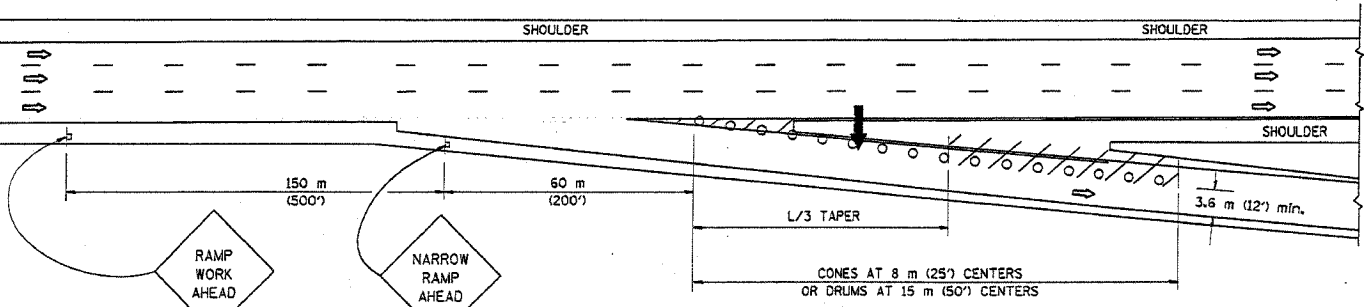
CONTRACT NO. 62720



TYPICAL ENTRANCE RAMP



TYPICAL EXIT RAMP



TYPICAL EXIT RAMP

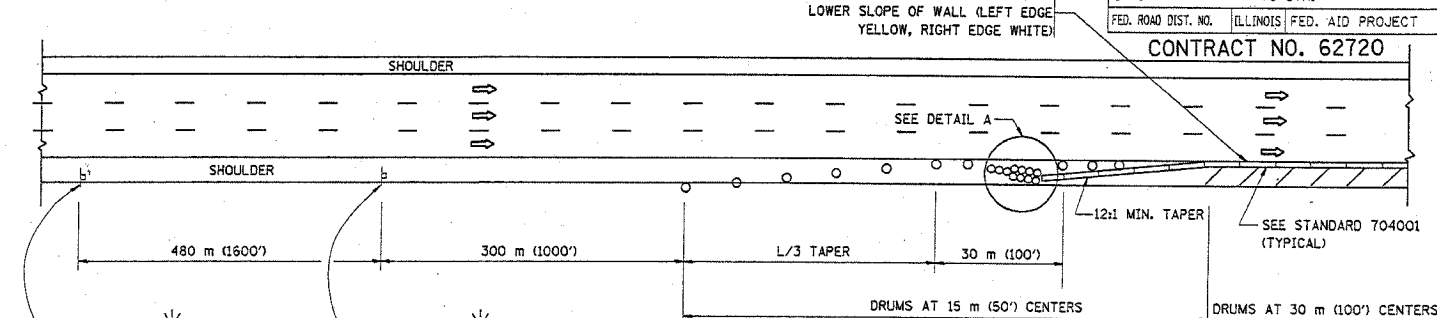
SYMBOLS

- ARROWBOARD
- WORK AREA
- SIGN ON PORTABLE OR PERMANENT SUPPORT
- FLAGGER WITH CONTROL SIGN
- DRUM WITH MONO-DIRECTIONAL STEADY BURNING LIGHT
- CONES - 700 (28) IN HEIGHT

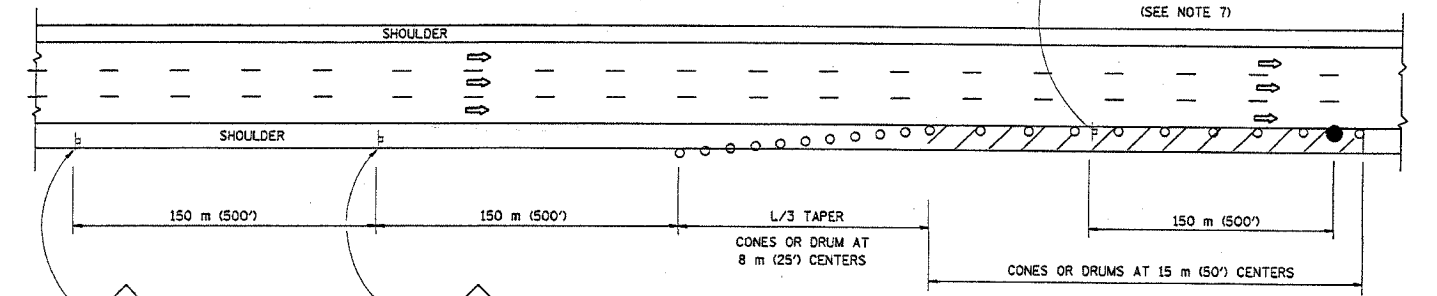
GENERAL NOTES

1. THE "L" DISTANCE EQUALS:

SPEED LIMIT	FORMULAS
80 km/h (45 mph) OR GREATER:	METRIC: $L=0.6S(W)(S)$ ENGLISH: $L=(W)(S)$
	W = WIDTH OF OFFSET IN METERS (FEET)
	S = NORMAL POSTED SPEED KM/H (MPH)
2. PLASTIC DRUMS WITH HIGH PERFORMANCE REFLECTIVE SHEETING AND STEADY BURNING LIGHTS ARE REQUIRED FOR ALL NIGHTTIME CLOSURES.
3. ALL SIGNS SHALL BE POST MOUNTED IF THE CLOSURE TIME EXCEEDS FOUR DAYS.
4. FLASHING LIGHTS SHALL BE USED DURING THE HOURS OF DARKNESS AND SHALL BE INSTALLED ABOVE THE FIRST TWO SETS OF SIGNS.
5. THE IMPACT ATTENUATOR, TEMPORARY IS NOT REQUIRED WHEN THE TEMPORARY CONCRETE BARRIER WALL IS OUTSIDE THE CLEAR ZONE OR IS TIED INTO THE EXISTING GUARDRAIL. IF OFFSET IS LESS THAN 5 FEET USE "TRAFFIC BARRIER TERMINAL, TYPE III, TEMPORARY" DEVICE TO MEET NCHRP350 FOR POSTED SPEED.
6. AUTHORIZATION FROM THE DISTRICT'S BUREAU OF TRAFFIC IS REQUIRED FOR ALL FREEWAY CLOSURES.
7. THE FLAGGER AND FLAGGER SIGN ARE REQUIRED AT THE ABOVE WORK SITES WHEN:
 - a. FOUR OR MORE WORK VEHICLES ENTER THE TRAFFIC LANES IN A ONE HOUR PERIOD.
 - b. THE WORK ACTIVITY REQUIRES FREQUENT ENCROACHMENT INTO THE LANE OPEN TO TRAFFIC.
 THE FLAGGER SHALL BE STATIONED APPROXIMATELY 30 m (100') TO 60 m (200') IN ADVANCE OF THE WORKERS.

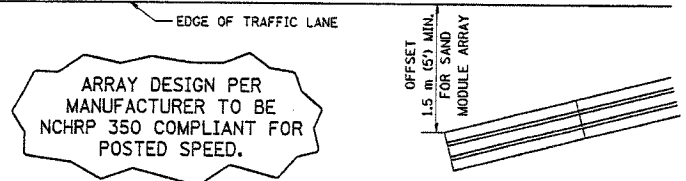


PERMANENT SHOULDER CLOSURE



DAYTIME SHOULDER CLOSURE

THIS DETAIL IS USED WHERE:
 1. VEHICLES, EQUIPMENT, WORKERS OR THEIR ACTIVITIES ENCROACH IN AN AREA CLOSER THAN 4.5 m (15') TO THE EDGE OF PAVEMENT FOR A PERIOD IN EXCESS OF 15 MINUTES.



ARRAY DESIGN PER MANUFACTURER TO BE NCHRP 350 COMPLIANT FOR POSTED SPEED.

DETAIL "A" IMPACT ATTENUATOR, TEMPORARY (SEE NOTE 5)

ALL DIMENSIONS ARE IN MILLIMETERS (INCHES) UNLESS OTHERWISE SHOWN.

ILLINOIS DEPARTMENT OF TRANSPORTATION

TRAFFIC CONTROL DETAILS FOR FREEWAY SHOULDER CLOSURES PARTIAL RAMP CLOSURES

REVISIONS	
NAME	DATE
DWS	11/96
JAF	12/02
NCHRP 350	04/03

SCALE: NONE
 DATE: 2/7/2005

DRAWN BY: DWS
 DESIGNED BY: DWS
 CHECKED BY: TC-17