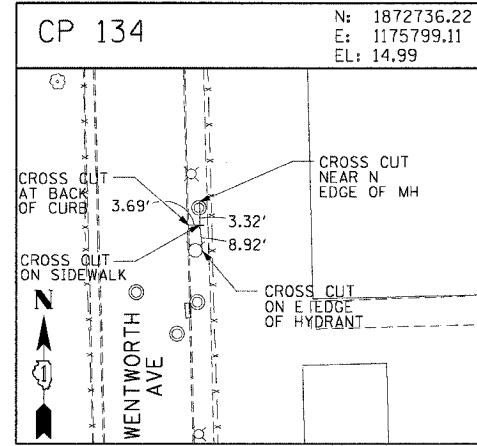
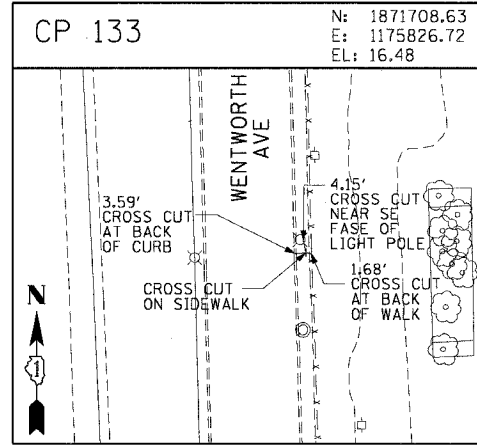
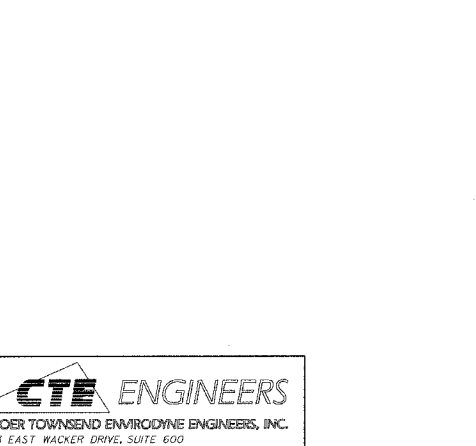
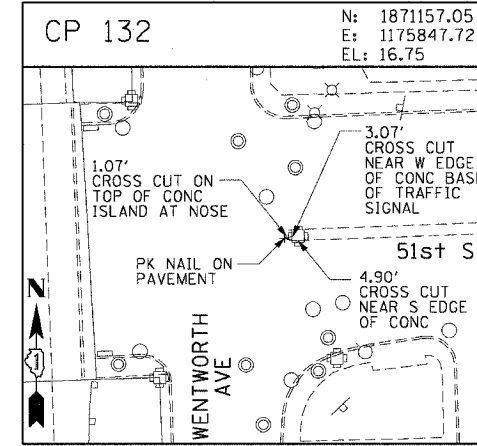
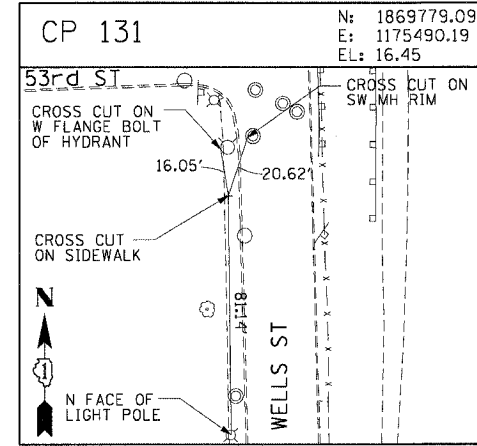
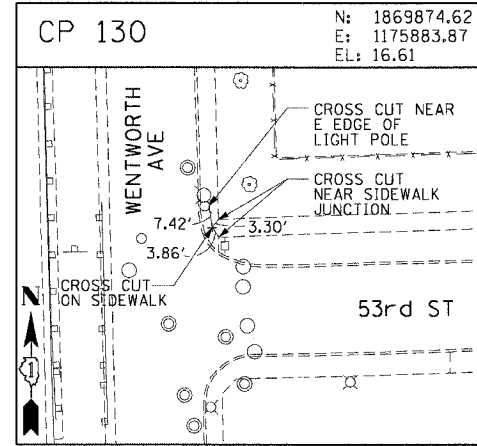
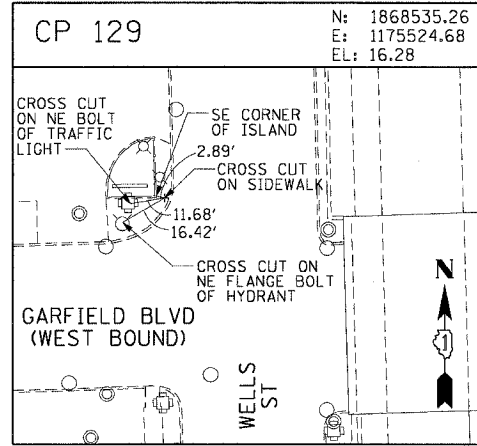
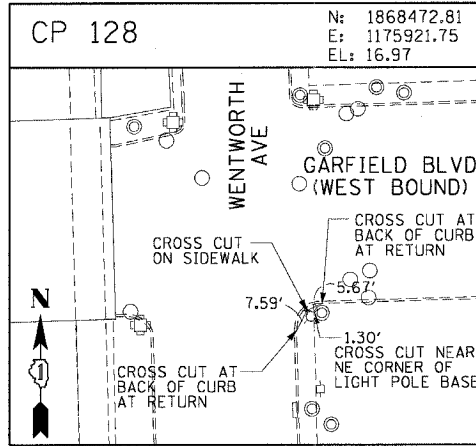
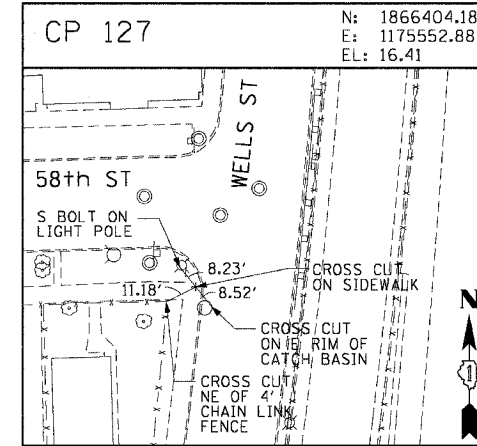
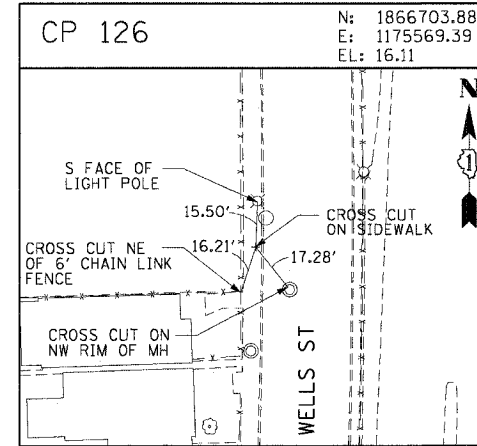
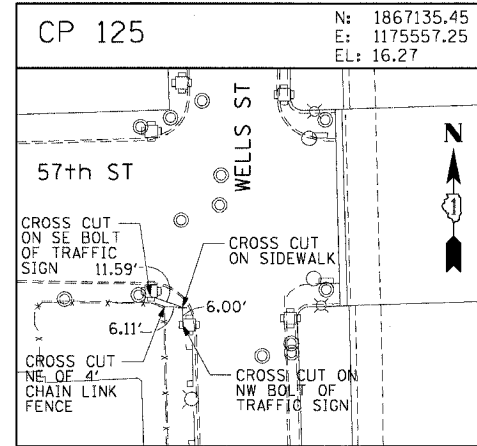
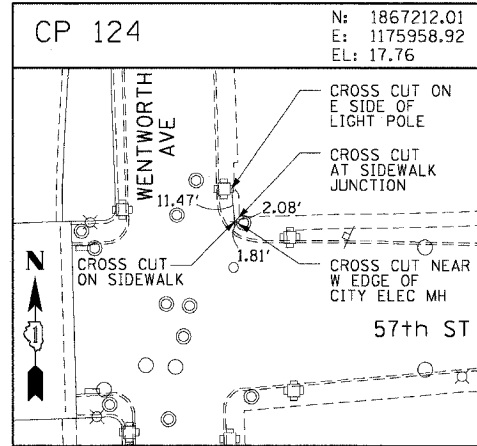
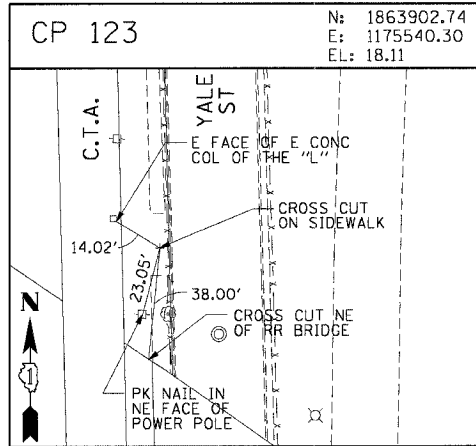
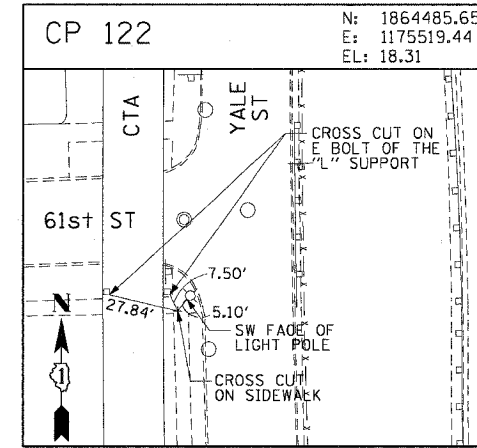
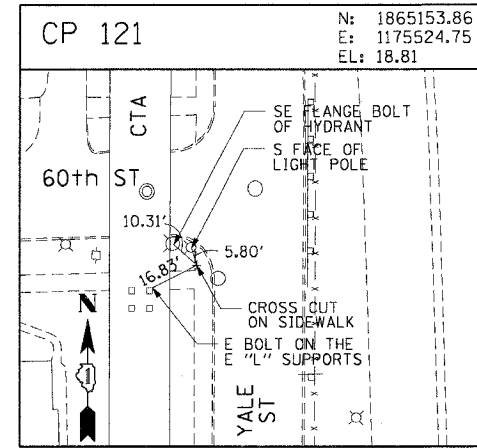
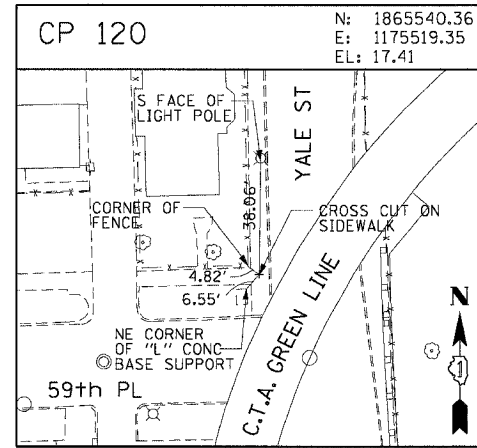
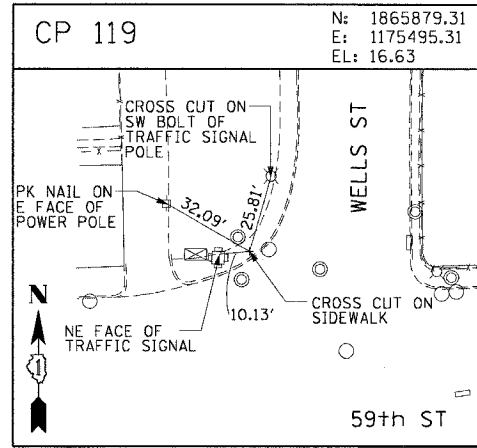
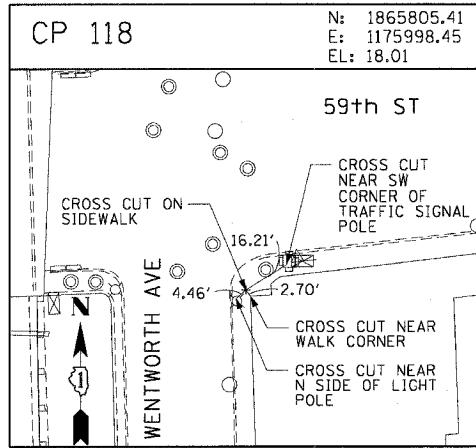


F.A.I. RTE.	SECTION	COUNTY	TOTAL SHEETS	SHEET NO.
90/94	2004-067L	COOK	35	17
STA.	TO STA.			
FED. ROAD DIST. NO. 1 ILLINOIS FED. AID PROJECT				
62806				



CTE ENGINEERS
CONSOER TOWNSEND ENVIRONMENTAL ENGINEERS, INC.
303 EAST WACKER DRIVE, SUITE 600
CHICAGO, ILLINOIS 60601-5212, PHONE: (312) 938-0300

REVISIONS	
NAME	DATE

ILLINOIS DEPARTMENT OF TRANSPORTATION
F.A.I. 90/94 (DAN RYAN EXPRESSWAY)
59th ST TO 47th ST (FRONTAGE ROAD)
CITY OF CHICAGO LIGHTING CONDUIT & FOUNDATIONS
WELLS STREET

SURVEY TIES AND CONTROL POINTS

SCALE: 1"=30'
DATE: February 11, 2005
DRAWN BY: MRK
CHECKED BY: JAL

V:\cadd\17\17040468\17040468\elec\17-cadd\17-survey\17-02-2005\17-02-2005.dwg