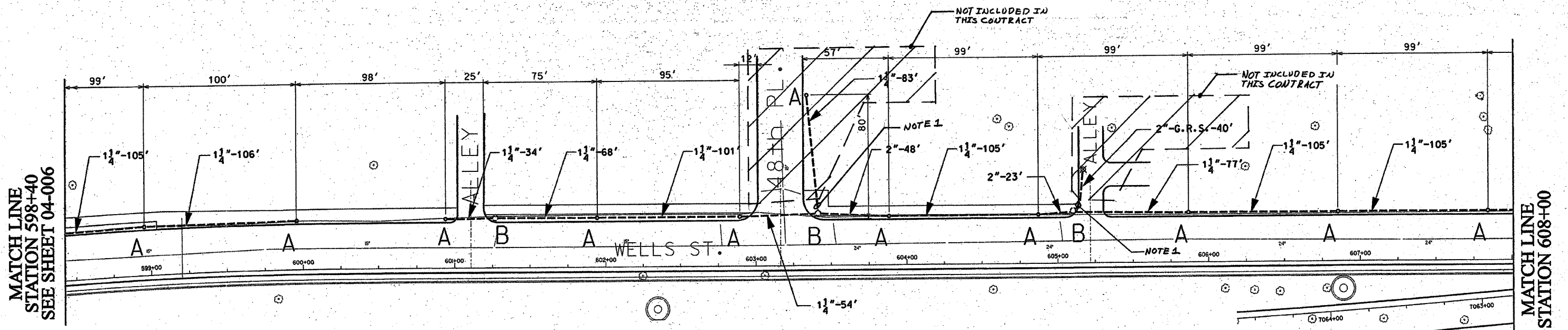


62806



F.A. RTE	SECTION	COUNTY	TOTAL SHEETS	SHEET NO
90/94	*	COOK	35	25
STA. 598+00	TO STA. 615+00			
FED. ROAD DIST NO. 1		ILL. INDS	FED AID PROJECTS	
* 2004-067L				



MATCH LINE  
STATION 598+40  
SEE SHEET 04-006

MATCH LINE  
STATION 608+00

NOTES:

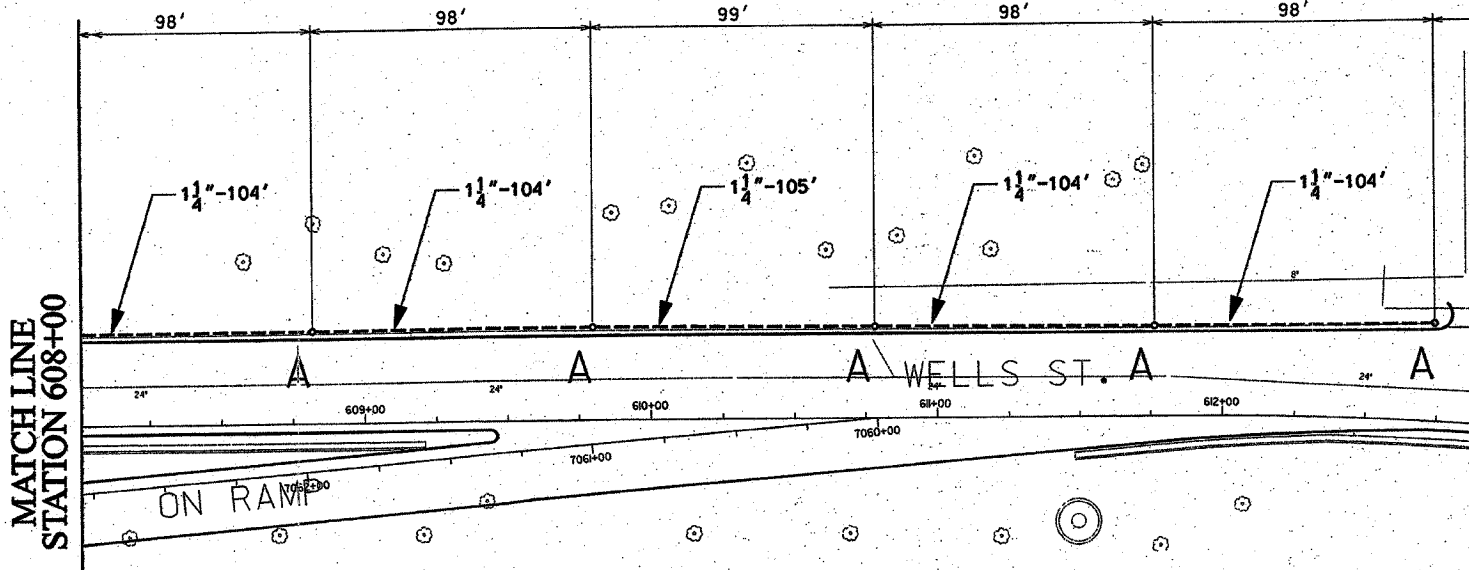
1. PROVIDE A CONDUIT STUB AT HANDHOLE EXTENDING TO ONE FOOT PAST THE LIMITS OF SIDEWALK REPLACEMENT. PROVIDE A CONDUIT CAP FOR THE CONDUIT STUB. THE CONDUIT CAP WILL BE INCLUDED IN THE UNIT PRICE FOR THE CONDUIT OF SPECIFIED TYPE AND DIAMETER. NO SEPARATE PAYMENT WILL BE MADE. SEE IDOT CONTRACT NOS. 62586 AND 62795 FOR LIMITS OF SIDEWALK REPLACEMENT.

1 1/4" DIRECT BORED CONDUIT SCHEDULE #80 AS PER IDOT ARTICLE 810.03  
 2" DIRECT BORED CONDUIT SCHEDULE #80 AS PER IDOT ARTICLE 810.03  
 2" CONDUIT SCHEDULE #40 INSTALLED IN TRENCH AS PER IDOT ARTICLE 810.03  
 2" GALVANIZED RIGID STEEL ELBOW ON STRUCTURE  
 2" GALVANIZED RIGID STEEL CONDUIT INSTALLED IN TRENCH AS PER IDOT ARTICLE 810.03  
 HAND HOLE - 30" x 36" WITH 24" FRAME AND COVER  
 CONCRETE FOUNDATION - 5' x 20", 10" B.C., 1" ANCHOR RODS

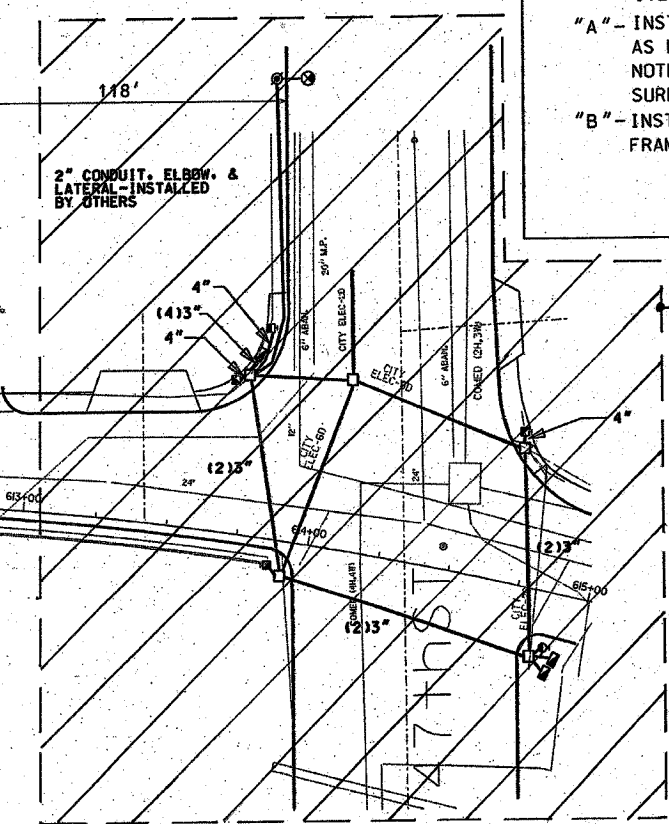
NOTES: CONTRACTOR IS TO INSTALL UNDERGROUND CONDUIT AND PULL ROPE BETWEEN FOUNDATIONS AS WELL AS PERFORM THE FOLLOWING WORK ITEMS ACCORDING TO BUREAU OF ELECTRICITY SPECIFICATIONS:

"A" - INSTALL 20" x 5' FOUNDATION, 10" B.C., 1" ANCHOR RODS AS PER DRAWING NO. 565, 2' OFF FACE OF CURB, UNLESS NOTED OTHERWISE. BUILD FOUNDATIONS FLUSH WITH SIDEWALK SURFACE.

"B" - INSTALL 30" HANDHOLE AS PER DRAWING NO. 867 WITH 24" FRAME AND COVER



MATCH LINE  
STATION 608+00



FOR INSTALLATION PLAN SEE SHEET 04-019  
 FOR REMOVAL PLAN SEE SHEET 04-026

REVISIONS	
NAME	DATE

CITY OF CHICAGO  
 DEPT. OF STREETS AND SANITATION  
 BUREAU OF ELECTRICITY  
 DIVISION OF ELECTRICAL ENGINEERING

DRAFTSMAN B. GARNSEY	CHIEF DRAFTSMAN ROBERT CARTER	ENGINEER B. GARNSEY
SUPERVISING ENGINEER ELEC. DESIGN ENGR.		DWG. NO. <b>04-007</b>
ENGINEER OF ELECTRICITY:		DATE: 1/20/04
GEN'L SUPT. OF ELECTRICITY:		
DEPUTY COMMISSIONER:		
SIZE: 22"   36"	SCALE: 1"=30'	

ILLINOIS DEPARTMENT OF TRANSPORTATION  
 F.A.I. 90/94 (DAN RYAN EXPRESSWAY)  
 57th St. TO 47th St. (FRONTAGE ROADS)

STREET LIGHTING  
 UNDERGROUND CONDUIT FACILITIES

SCALE: 1" = 30'      DRAWN BY: B.T.G.  
 DATE: February 11, 2005      CHECKED BY: O.L.