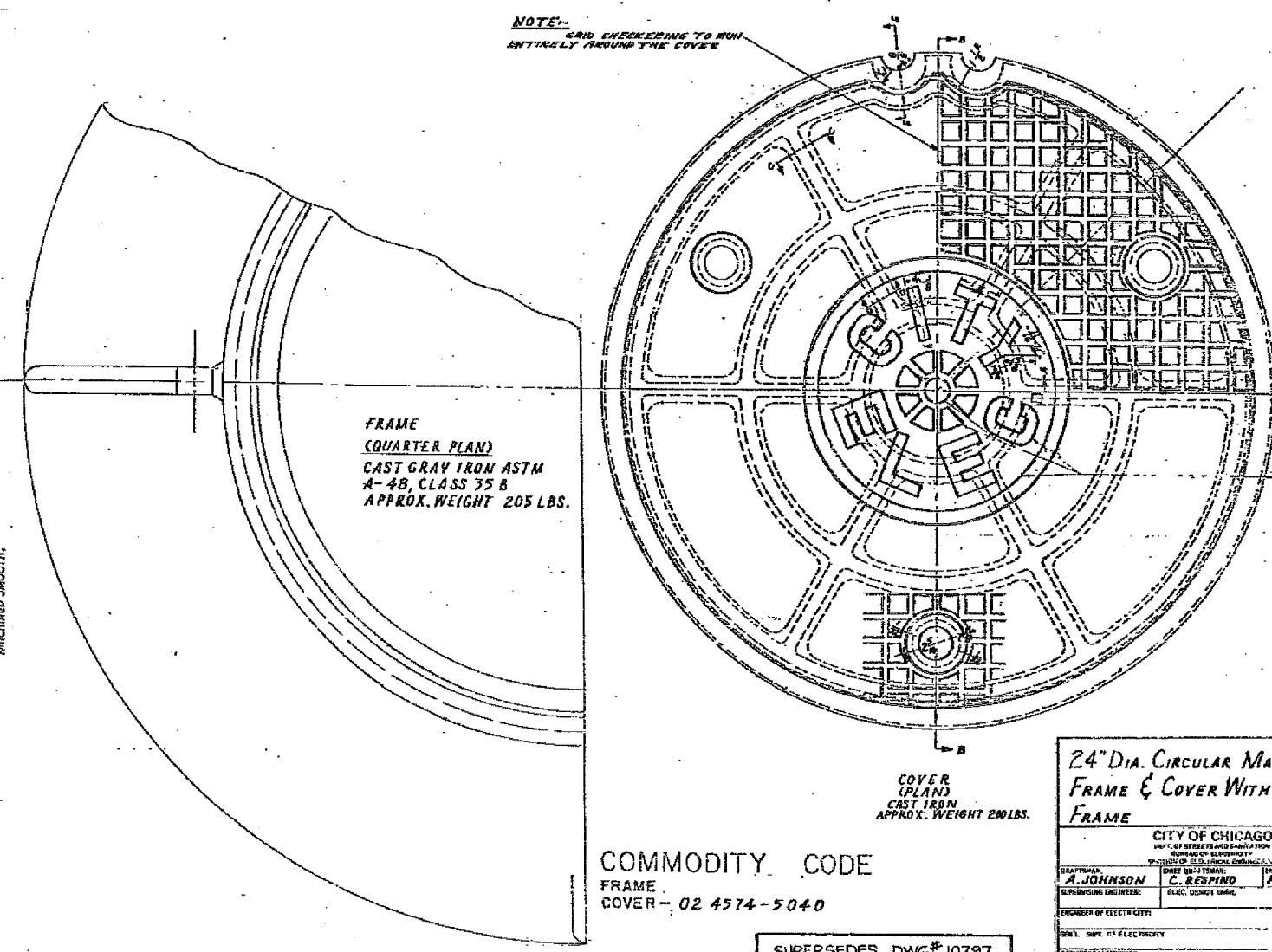
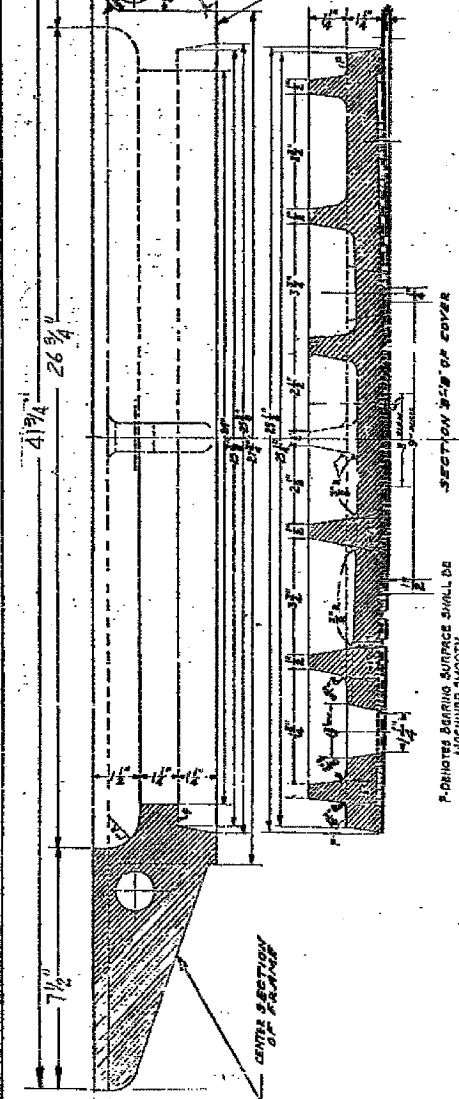
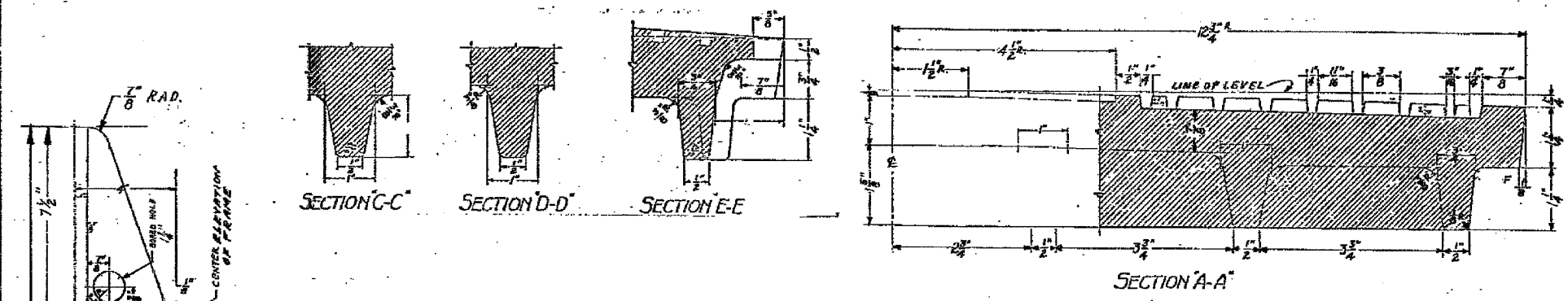


F.A.I. RTE.	SECTION	COUNTY	TOTAL SHEETS	SHEET NO.
90/94	2004-067L	COOK	35	34
STA.	TO STA.			
FED. ROAD DIST. NO. 1	ILLINOIS	FED. AID PROJECT		
62806				



COMMODITY CODE
FRAME
COVER - 02 4574-5040

SUPERSEDES DWG# 10797
DATED 2-10-35

**24" DIA. CIRCULAR MANHOLE
FRAME & COVER WITH 41 7/8" O.D.
FRAME**

CITY OF CHICAGO
DEPT. OF TRANSPORTATION
BUREAU OF ELECTRICITY
DIVISION OF ELECTRICAL ENGINEERING

DESIGNED BY A. JOHNSON	CHECKED BY C. RESPINO	PROJECT ENGINEER M. DE BARTOLO
SUPERVISING ENGINEER	ELECT. DESIGN ENGINEER	DIV. CH. IN CH.
ENGINEER OF ELECTRICITY		
NO. 1 SUP. OF ELECTRICITY		872
SAFETY ENGINEER		
DATE	SCALE	DATE: 4-24-92

CTE ENGINEERS
CONSOR TOWNSEND ENVIRONMENTAL ENGINEERS, INC.
303 EAST WACKER DRIVE, SUITE 600
CHICAGO, ILLINOIS 60601-5212, PHONE: (312) 938-0300

REVISIONS	
NAME	DATE

ILLINOIS DEPARTMENT OF TRANSPORTATION
F.A.I. 90/94 (DAN RYAN EXPRESSWAY)
59th ST TO 47th ST (FRONTAGE ROAD)
CITY OF CHICAGO LIGHTING CONDUIT & FOUNDATIONS
WELLS STREET

BOE STANDARD DETAILS

SCALE: NONE
DATE: February 11, 2005

DRAWN BY: HAR
CHECKED BY: WDS

02/02/2005 09:02:39 AM \\citech\nt\p\40468\p\0468\elec\N4-ctrl\912\912\006051\200605a.dwg