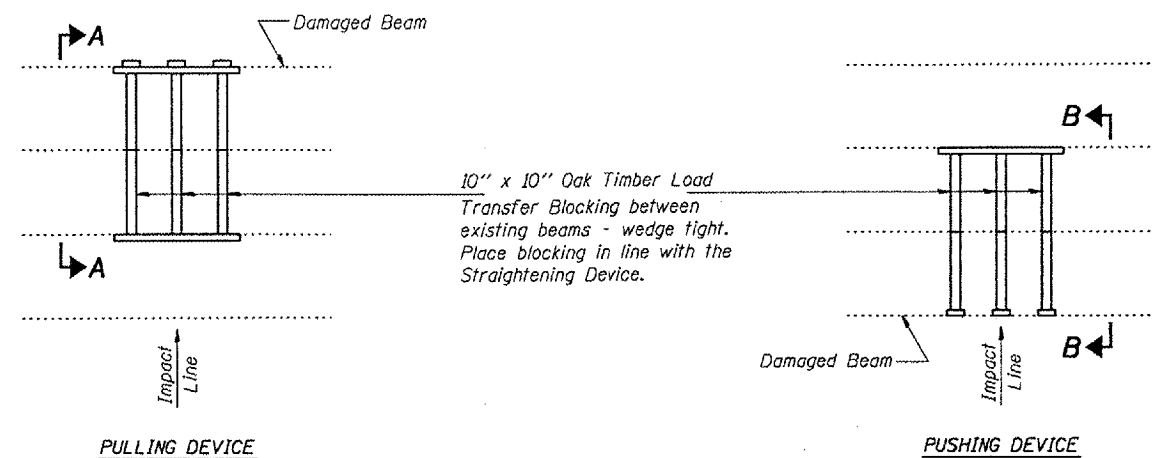


STATE OF ILLINOIS
DEPARTMENT OF TRANSPORTATION

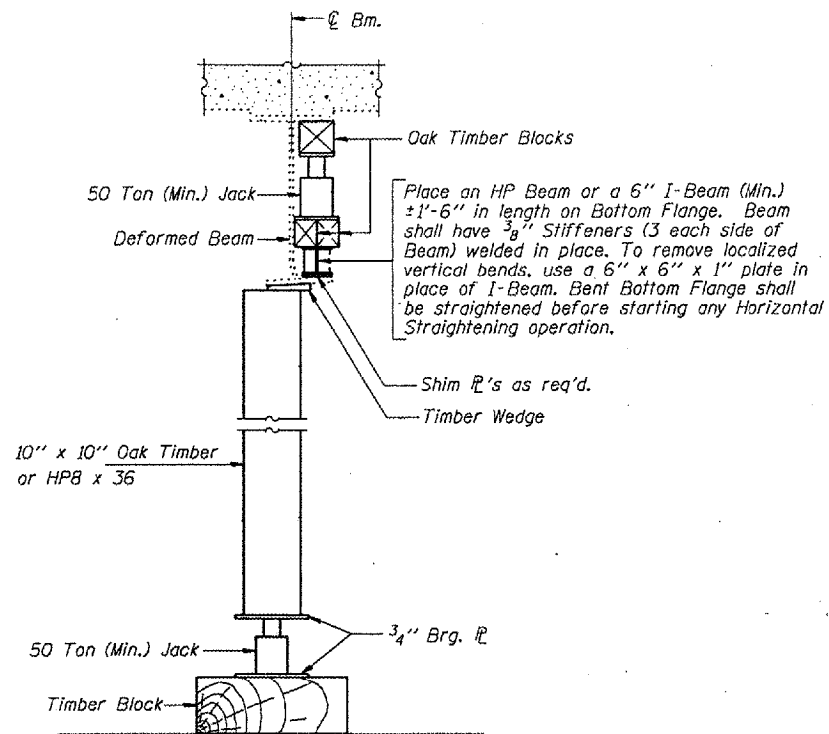
ROUTE NO.	SECTION	COUNTY	TOTAL SHEETS	SHEET NO.	SHEET NO. 2 2 SHEETS
FAI 90		COOK	6	5	
FED. ROAD DIST. NO. 7	ILLINOIS	FED. AID PROJECT			

Contract No. 62765

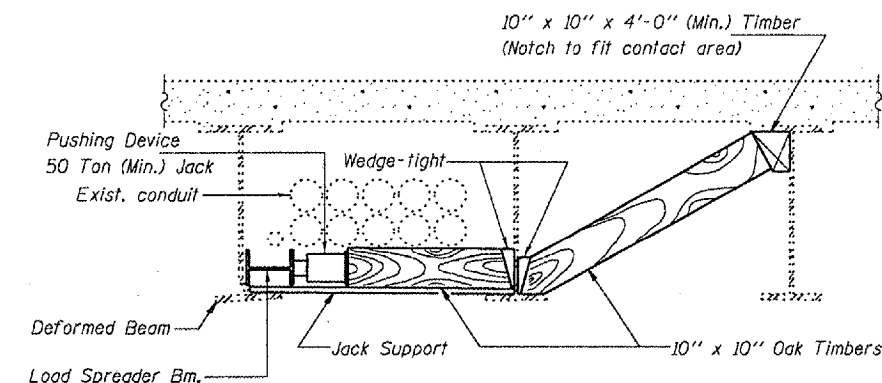


PARTIAL PLANS
SUGGESTED BEAM STRAIGHTENING METHODS

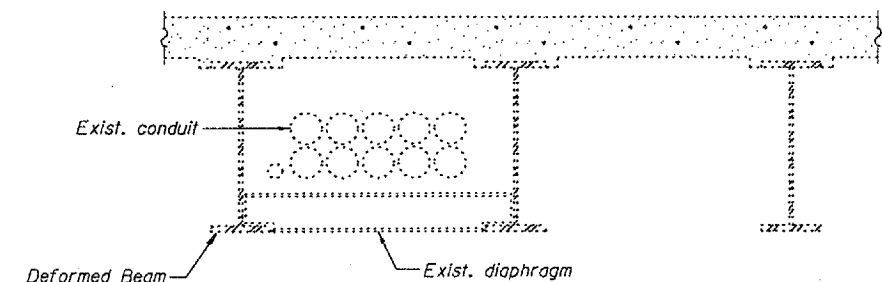
Straightening force shall be maintained on all load transfer blocking during beam straightening.



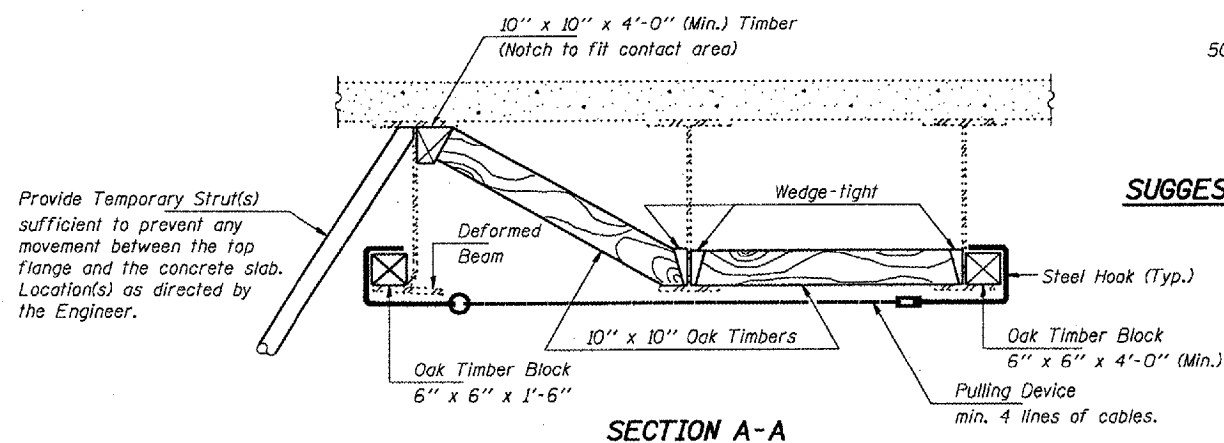
SUGGESTED VERTICAL STRAIGHTENING DETAIL



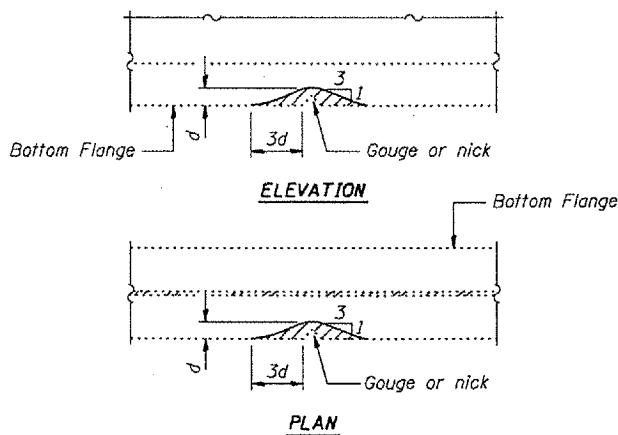
SECTION B-B
(At location of straightening procedure)



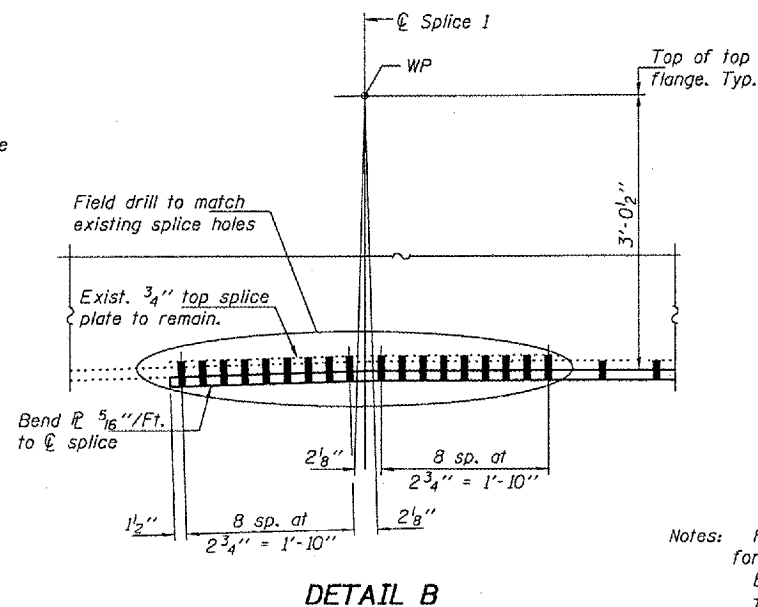
SECTION B-B
(At diaphragm location)



SECTION A-A



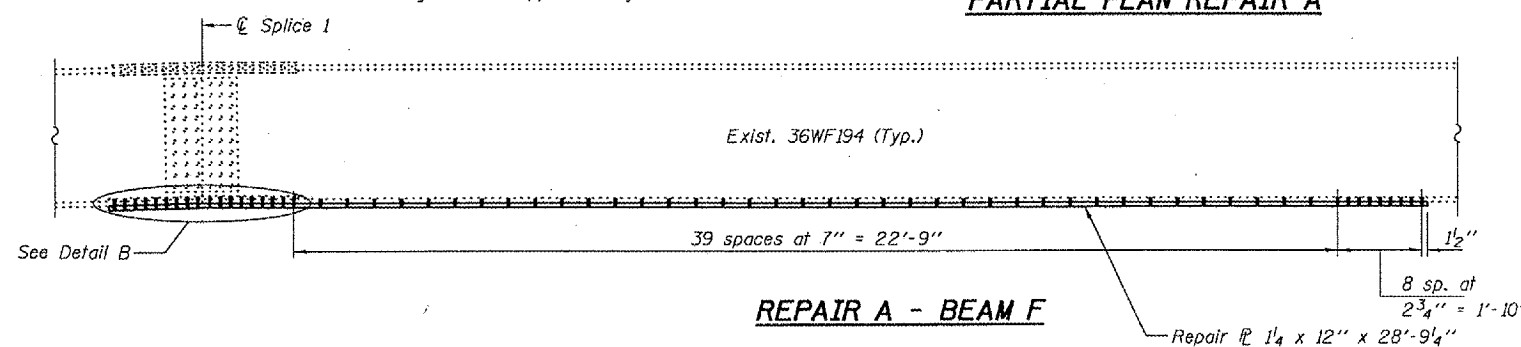
GRINDING DETAIL



DETAIL B

EXISTING DEFORMATION TO BE STRAIGHTENED

(Looking South)
(Approximate max. deflections)
Deflected length of beam to be straightened is approximately 24'-6".



REPAIR A - BEAM F

PARTIAL PLAN REPAIR A

BEAM STRAIGHTENING
CIRCLE AVE. OVER I-290, CSX & CTA
COOK COUNTY
S.N. 016-0995

Notes: Fasteners shall be high strength bolts. Holes for Repair A shall be 5/16" φ for 7/8" φ bolts.
Existing bolts shall not be re-used.
The cost of field drilling required for installation of the steel members is included with Structural Steel Repair.

DESIGNED	JSB
CHECKED	PSJ
DRAWN	baliva
CHECKED	JSB PSJ

APRIL 1, 2005
EXAMINED *John A. Morris*
ENGINEER OF STRUCTURAL SERVICES
PASSED *Ralph E. Anderson*
ENGINEER OF BRIDGES AND STRUCTURES