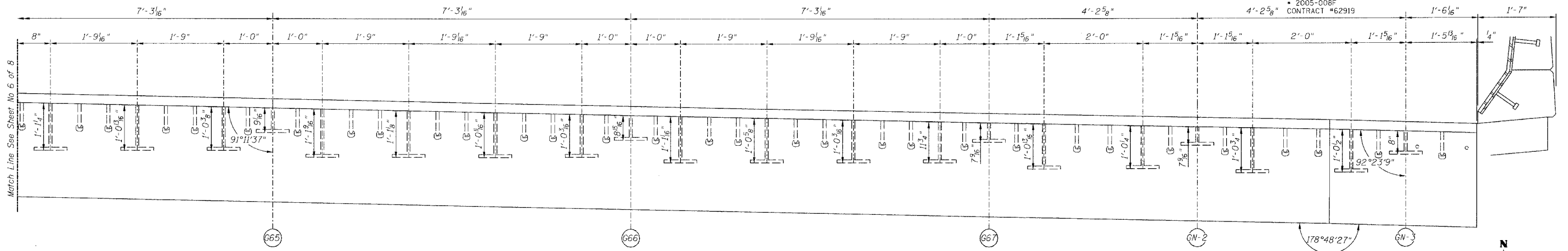


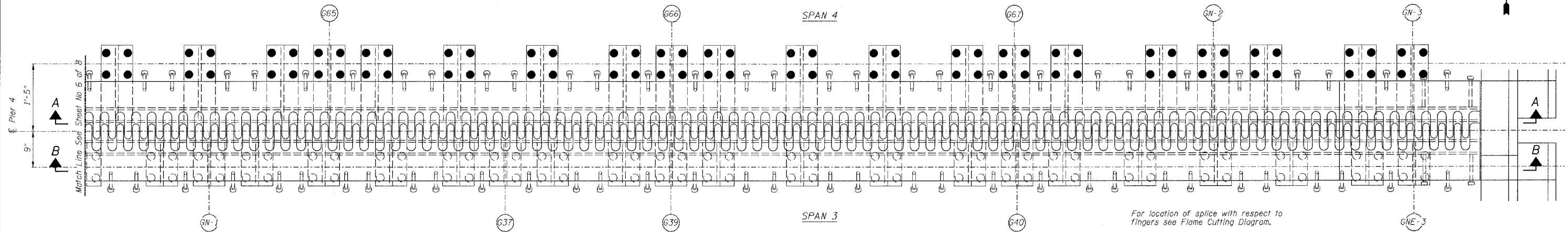
STATE OF ILLINOIS
DEPARTMENT OF TRANSPORTATION

ROUTE NO.	SECTION	COUNTY	TOTAL SHEETS	SHEET NO.
FAI 90/94		COOK	93	22
FED. ROAD DIST. NO.		ILLINOIS PROJECT		
2005-006F		CONTRACT #62919		

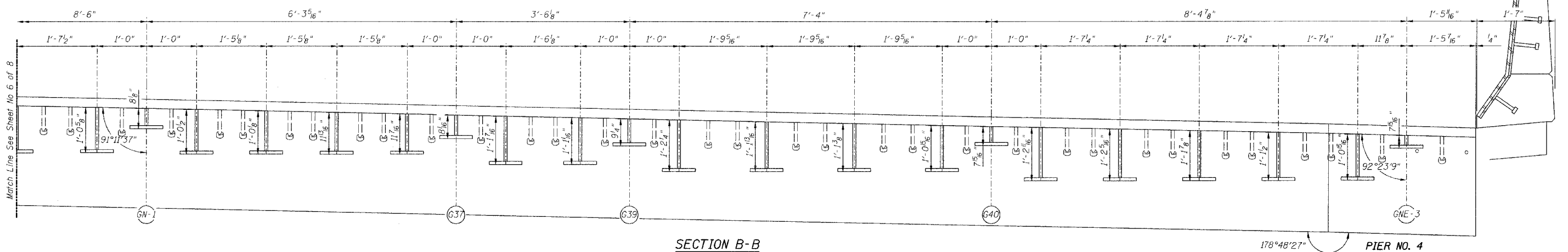
Sheet No 7
of 8 Sheets



SECTION A-A



PLAN OF FINGER PLATE AT PIER 4 (NORTHBOUND)



SECTION B-B

FINGER PLATE PLAN AND ELEVATION DETAILS

REVISIONS			STATE OF ILLINOIS DEPARTMENT OF TRANSPORTATION DIVISION OF HIGHWAYS		DRAWN BY: RLK DATE: 5/03
1	DATE	INITIALS	FAI RTE 90/94 DAN RYAN EXPRESSWAY SN 015-1110 (NORTHBOUND)		CHECKED BY: SDS DATE: 5/03
2			SEC COOK COUNTY		BOOK NUMBER
3			PROJECT NO. 4222-3		SHEET NO.
4			HOMER L. CHASTAIN & ASSOCIATES CONSULTING ENGINEERS		
5			8609 W. BRYAN MAWR AVENUE CHICAGO, ILLINOIS 60611 TEL: 774-0050 FAX: 774-0050		

Note:
For optional splice detail see
flame cutting diagram on Sheet No. 4
All dimensions, except stool heights
are given along centerline of bearing.