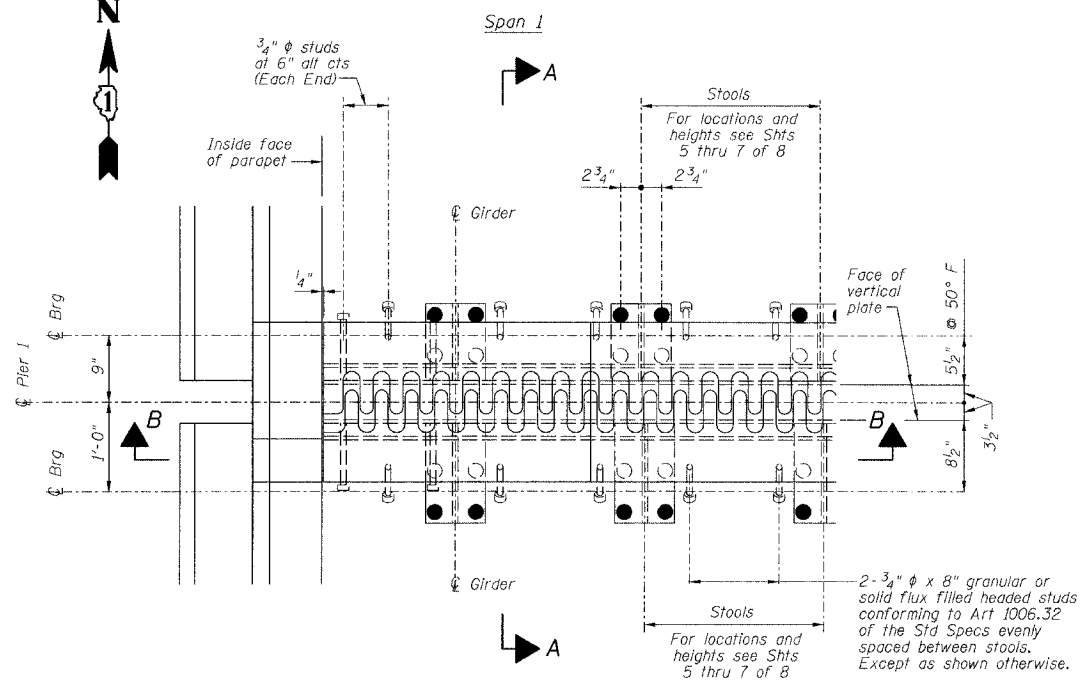


STATE OF ILLINOIS
DEPARTMENT OF TRANSPORTATION

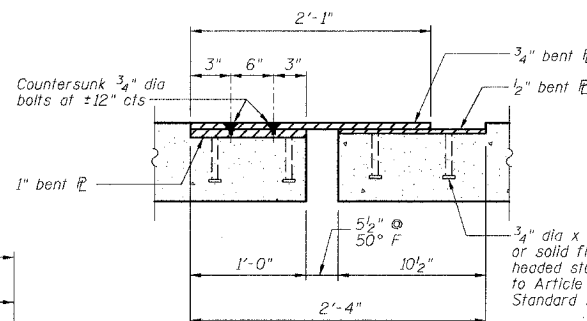
ROUTE NO.	SECTION	COUNTY	TOTAL SHEETS	SHEET NO.
FAI 90/94	*	COOK	93	2F
FED. ROAD DIST. NO.		ILLINOIS PROJECT		

Sheet No 4
of 8 Sheets

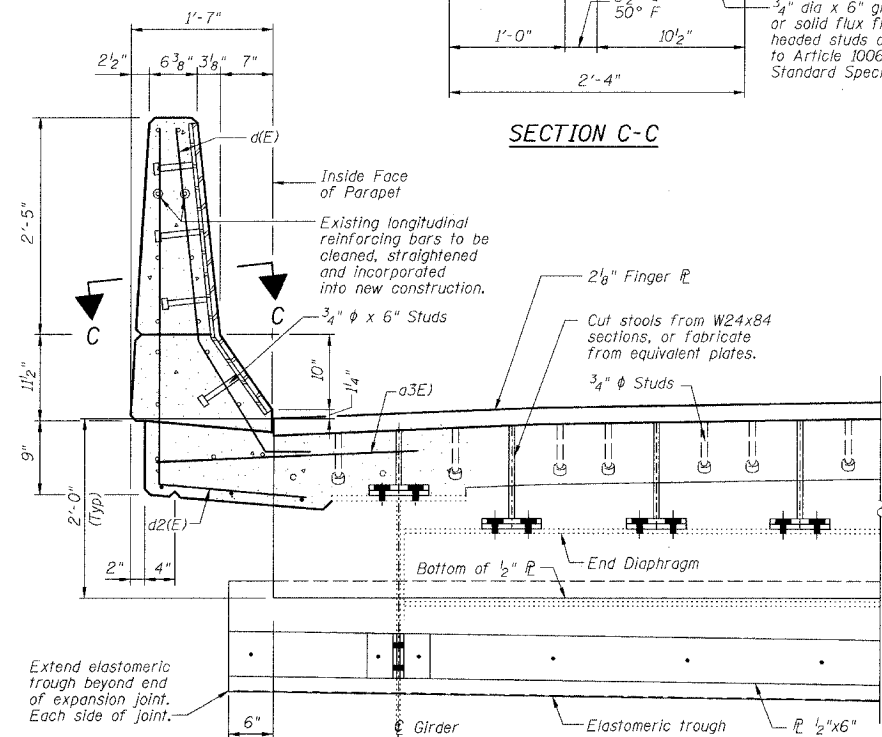
2005-008F
CONTRACT #62919



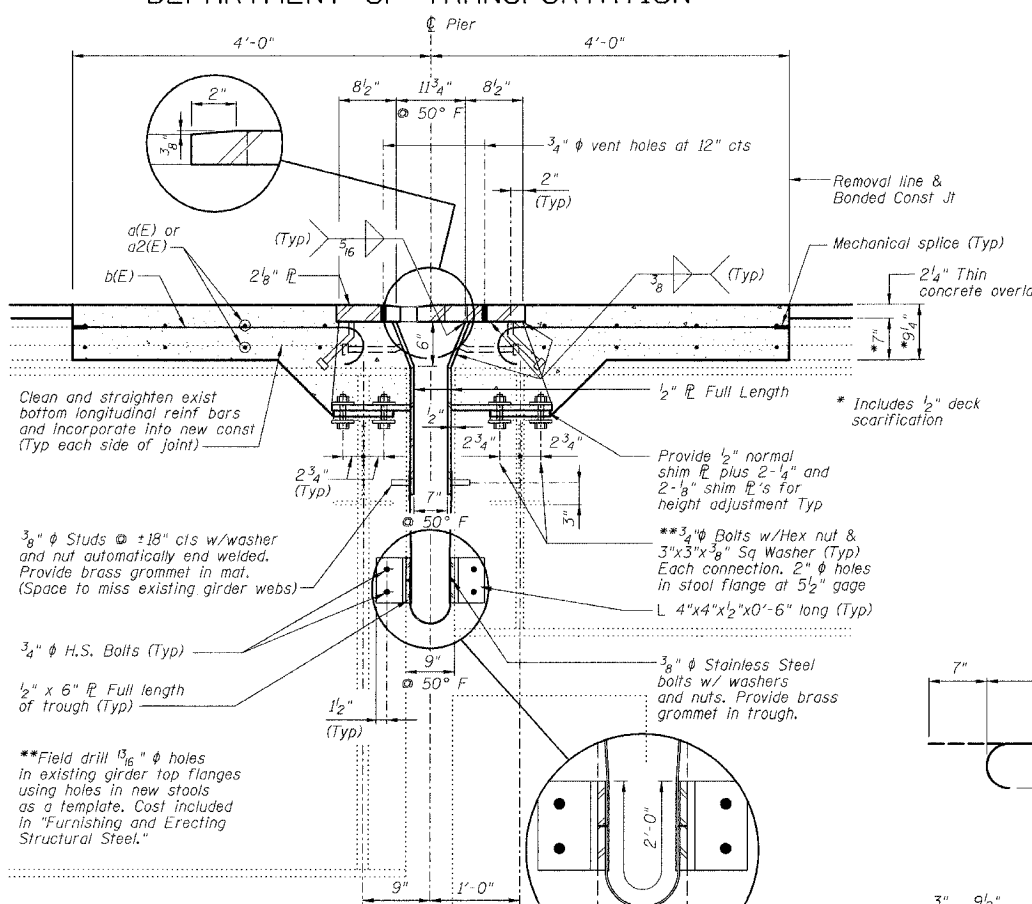
Span II
(016-1111)
PLAN
(Showing Southbound-Northbound similar)



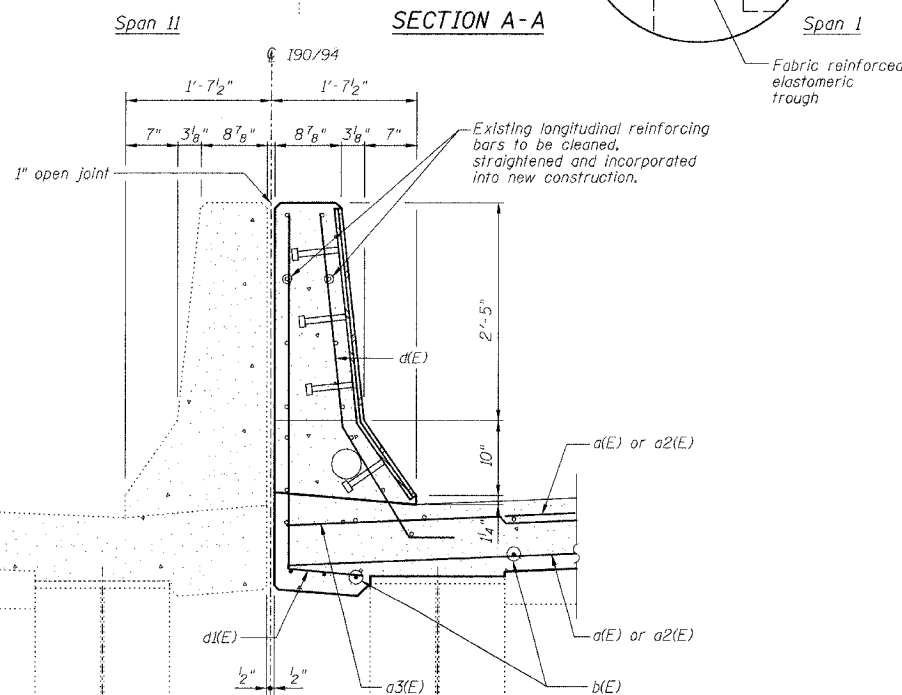
SECTION C-C



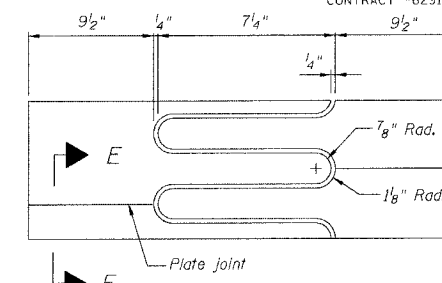
SECTION B-B



SECTION A-A

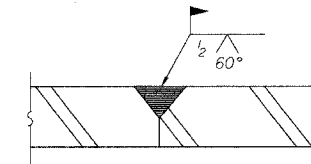


DETAIL AT MEDIAN PARAPET



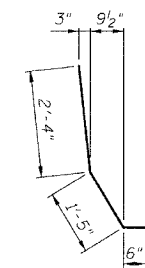
FLAME CUTTING DIAGRAM

(Proposed Finger flange - Cut from 2' x 2' x 1/2" R)



SECTION E-E

BAR b(E)



BAR d(E)

BARS d1(E) & d2(E)

BILL OF MATERIAL

Bar	No.	Size	Length	Shape
a(E)	24	#5	35'-0"	—
a2(E)	24	#5	31'-0"	—
a3(E)	16	#6	4'-6"	—
b(E)	132	#5	3'-10"	—
d(E)	16	#5	4'-3"	—
d1(E)	8	#5	4'-10"	—
d2(E)	8	#5	5'-10"	—
Reinforcement Bars, Epoxy Coated			Pound	2450
Concrete Removal			Cu Yd	17.3
Concrete Superstructure			Cu Yd	20.1
Bar Splicers			Each	24
Mechanical Splice			Each	132

Reinforcing bars designated (E) shall be epoxy coated.

NOTES

- The Contractor shall bolt the Stools of the Fingerplate Joint Assembly to the top of existing End Cross Frames and to the top of the existing girders, as shown in Section A-A of this drawing.
- Stainless steel bolts, washers and nuts shall meet the requirements of ASTM A193.
- The furnishing of all necessary hardware, stainless steel bolts, studs and washers, plates and angles shall be included with "Furnishing Structural Steel".
- Expansion Length = 403.6'

PIER NO. 1

FINGER PLATE EXPANSION JOINT DETAILS

REVISIONS	STATE OF ILLINOIS DEPARTMENT OF TRANSPORTATION DIVISION OF HIGHWAYS	DRAWN BY RLK 5/03
No. DATE INITIALS	FAI RTE 90/94 DAN RYAN EXPRESSWAY SN 016-1110 (NORTHBOUND)	CHECKED BY SDS 5/03
1	SEC	BOOK NUMBER
2		PROJECT NO.
3		4222-3
4		SHEET NO.
5		
6		
7		
8		
9		
10		

HOMER L. CHASTAIN & ASSOCIATES
CONSULTING ENGINEERS
8009 W. BRIN MAWR AVENUE
SUITE 204
CHICAGO, ILLINOIS 60631
312-774-0800
FAX 312-774-0805