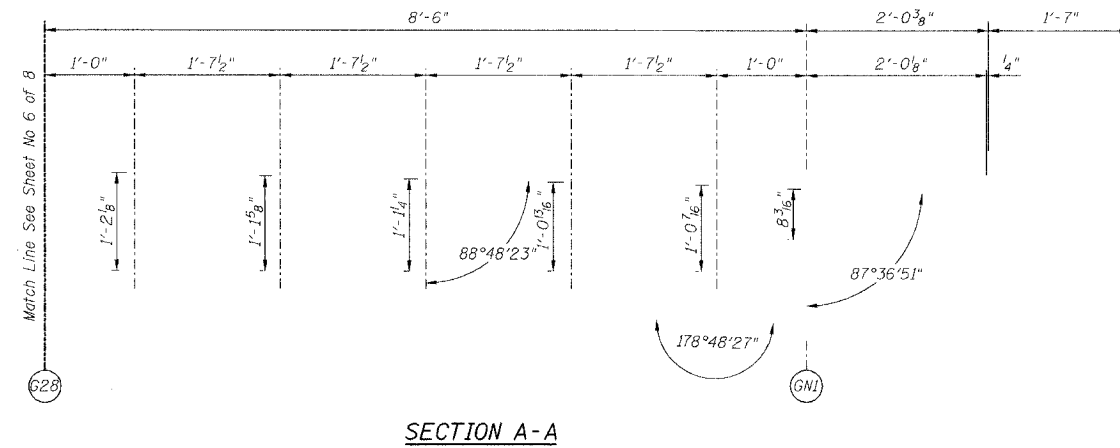


STATE OF ILLINOIS
DEPARTMENT OF TRANSPORTATION

ROUTE NO.	SECTION	COUNTY	TOTAL SHEETS	SHEET NO.
FAI 90/94	*	COOK	93	30
FED. ROAD DIST. NO.		ILLINOIS PROJECT		

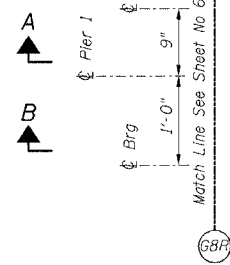
Sheet No 7
of 8 Sheets

2005-00BF
CONTRACT #62919



SECTION A-A

SPAN I

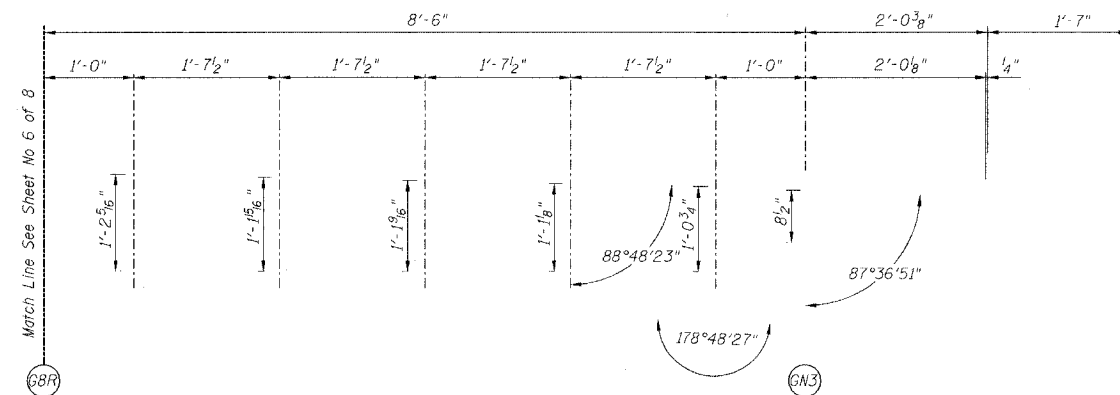


SPAN II
(SN 016-1111)

GN3

For location of splice with respect to fingers see Flame Cutting Diagram.

PLAN OF FINGER PLATE AT PIER 1 (NORTHBOUND)



SECTION B-B

PIER NO. 1

FINGER PLATE PLAN AND ELEVATION DETAILS

REVISIONS			STATE OF ILLINOIS DEPARTMENT OF TRANSPORTATION DIVISION OF HIGHWAYS		DRAWN BY RLK 5/03
1					CHECKED BY SDS 5/03
2					BOOK NUMBER
3					PROJECT NO.
4					4222-3
5					SHEET NO.
6					
7					
8					
9					
10					

Note:
For optional splice detail see
flame cutting diagram on Sheet No. 4

FAI RTE 90/94 DAN RYAN EXPRESSWAY
SN 016-1110 (NORTHBOUND) COOK COUNTY

HOMER L.
CHASTAIN
& ASSOCIATES
CONSULTING ENGINEERS

6009 W. BEYNS MAWEE AVENUE
SUITE 204
CHICAGO, ILLINOIS 60681
312-714-0900
FAX 312-714-9905