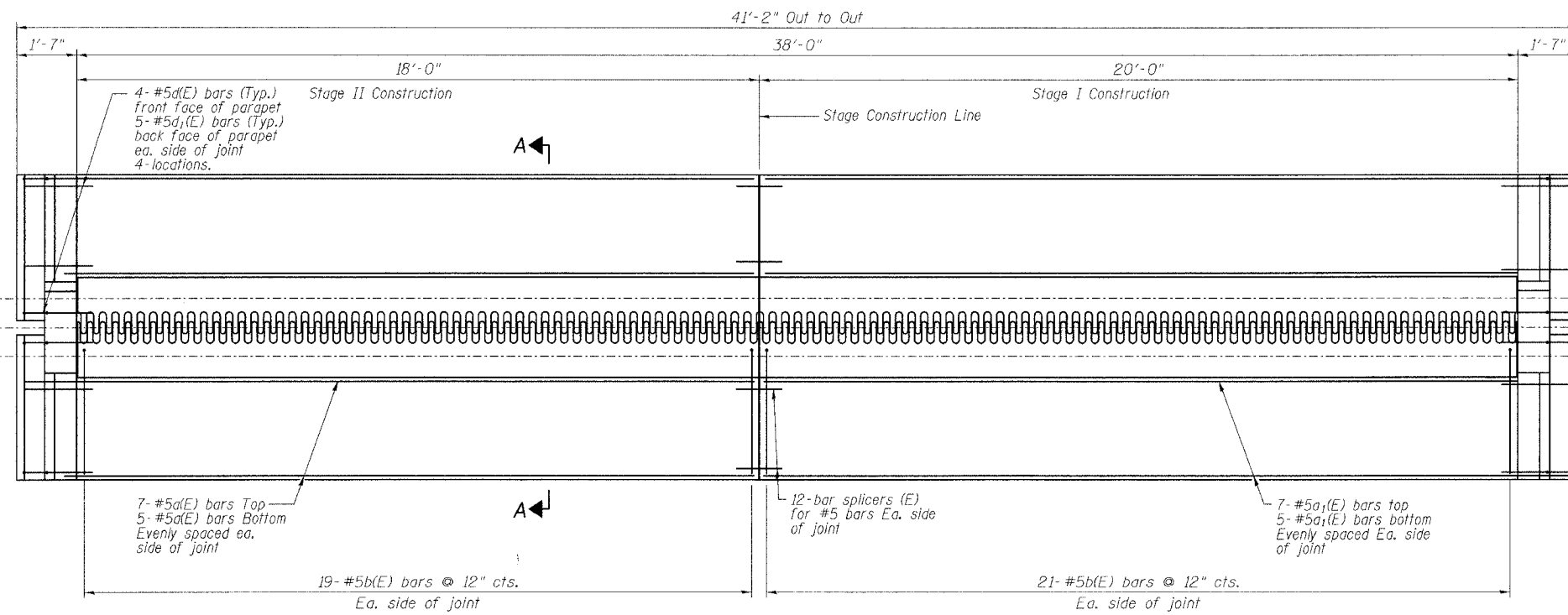


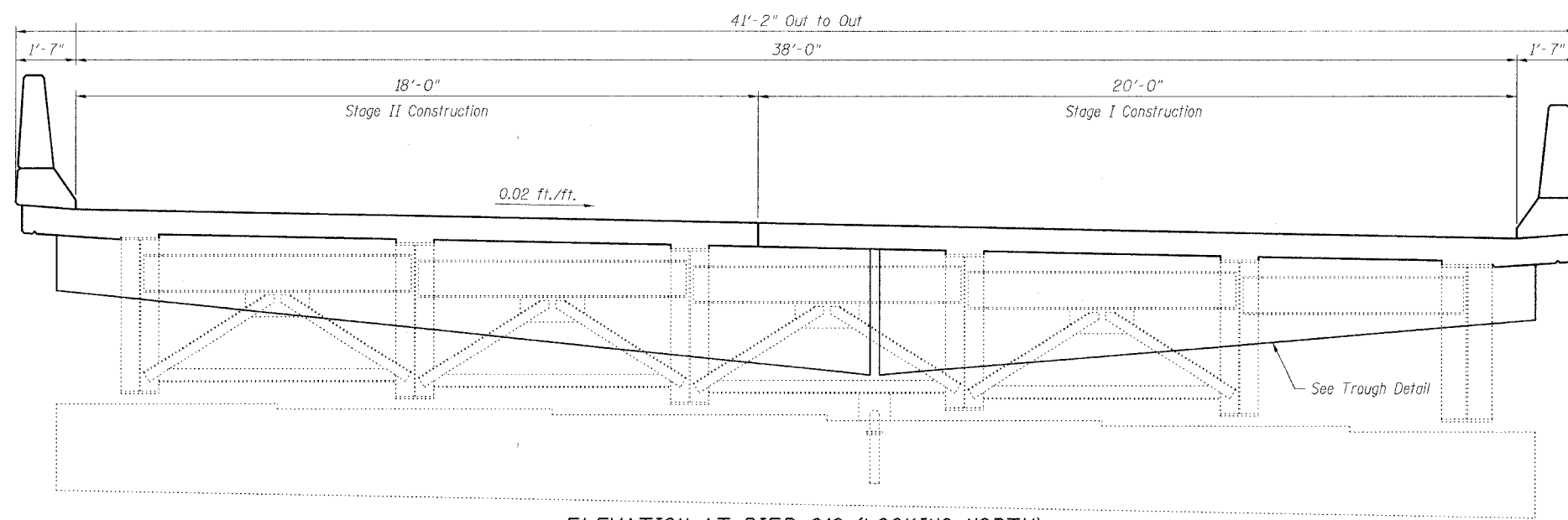
STATE OF ILLINOIS
DEPARTMENT OF TRANSPORTATION

ROUTE NO.	SECTION	COUNTY	TOTAL SHEETS	SHEET NO.	SHEET NO. 3
FAI 90/94	*	COOK	93	50	8 SHEETS
FED. AID DIST. NO.	ILLINOIS	FED. AID PROJECT			

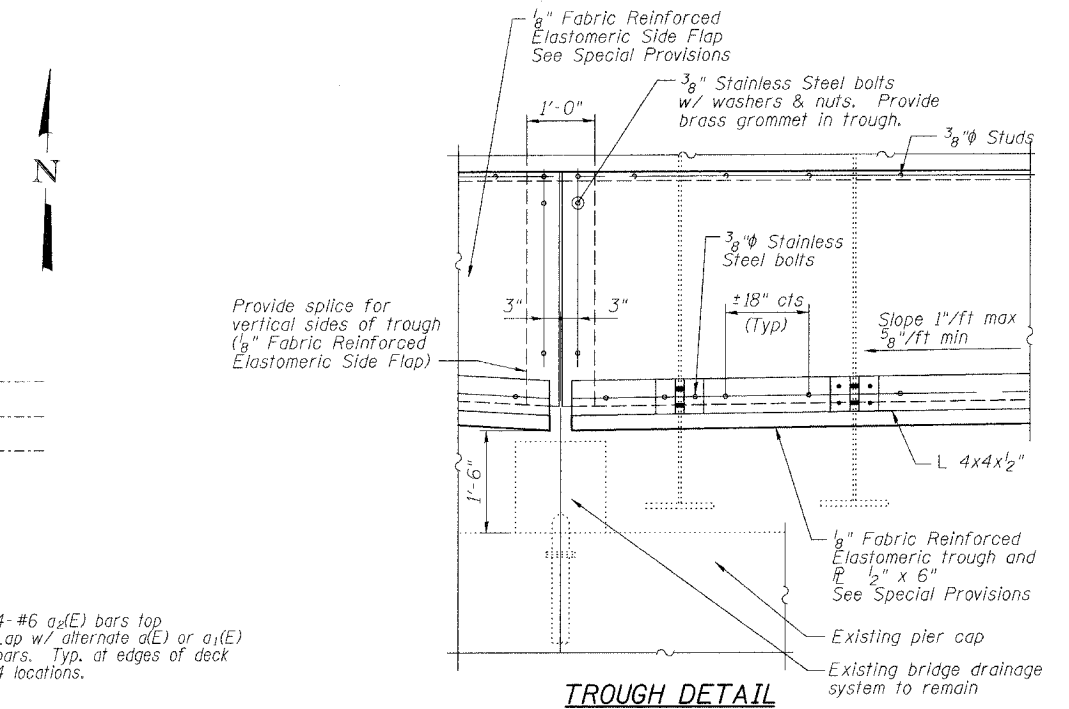
* 2005 - 008F
Contract #62919



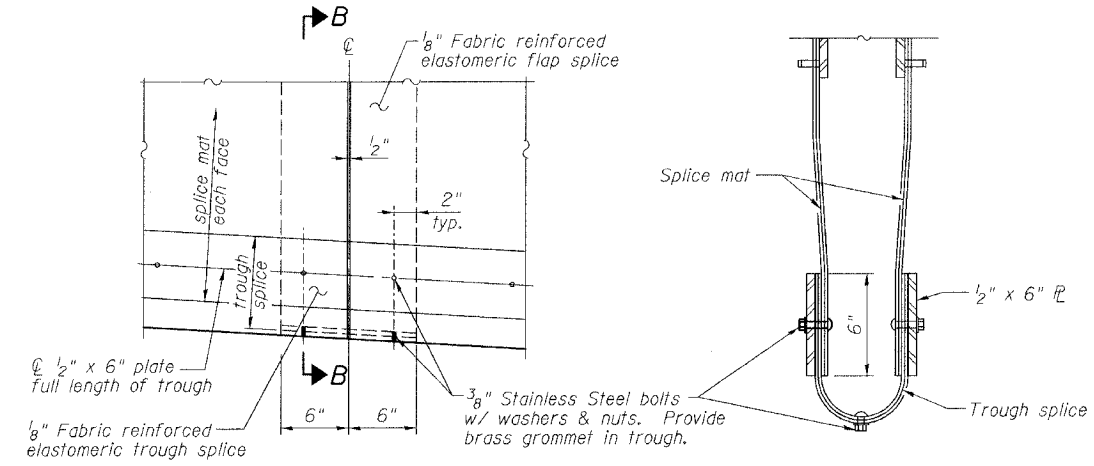
GIRDER LAYOUT AT PIER C10



ELEVATION AT PIER C10 (LOOKING NORTH)



TROUGH DETAIL



TROUGH SPLICE DETAIL

SECTION B-B

- Notes:
1. For Parapet Details and Superstructure Bill of Material, see Sheet 5 of 8.
 2. For Section A-A, see Sheet 4 of 8.

ILLINOIS DEPARTMENT OF TRANSPORTATION
PIER C10 JOINT DETAILS
F.A.I. ROUTE 90/94 NORTHBOUND (DAN RYAN EXPRESSWAY)
OVER SOUTH BRANCH - CHICAGO RIVER
COOK COUNTY
S.N. 016-1113 - PIER C10

REVISIONS	
NAME	DATE

SCALE: VERT. DRAWN BY: HEBERLING
HORIZ. DESIGNED BY: SANFORD
DATE: 2/17/05 CHECKED BY:
GREENE & BRADFORD, INC. COMPUTER FILE NO.
OF SPRINGFIELD 04286-W04-PJ1
PROFESSIONAL ENGINEER PROJECT 04286-W04
6/15/05-MML

FILE NAME = \$FILE\$
PLOT SCALE = \$PLOTSCALE\$
PLOT DATE = 6/21/2005
PLOT TIME = 12:27:44 PM
OPERATOR = michaelli