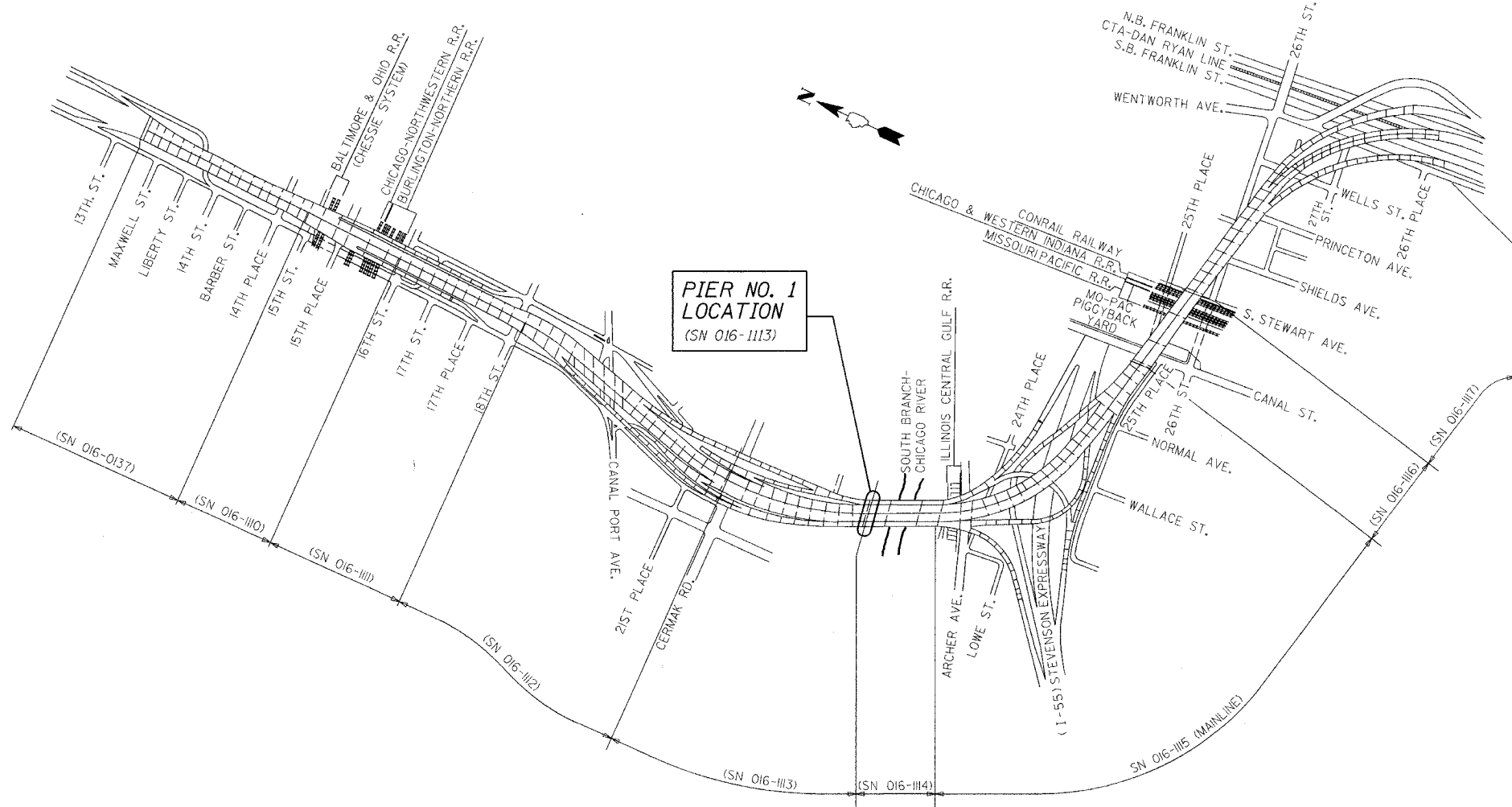


STATE OF ILLINOIS
DEPARTMENT OF TRANSPORTATION

ROUTE NO.	SECTION	COUNTY	SHEET NO.	SHEET
FA1 90/94	#	COOK	93	56
FED. ROAD DIST. NO.		ILLINOIS	FED. AID PROJECT	
* 2005-008F		Contract #62919		

SHEET NO. 1
9 SHEETS



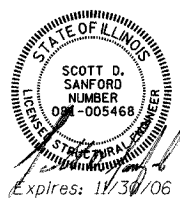
PIER NO. 1
LOCATION
(SN 016-1113)

KEY PLAN

DAN RYAN EXPRESSWAY (I-90/I-94) VIADUCT
COOK COUNTY, ILLINOIS

GENERAL NOTES

Fasteners shall be high strength bolts. Bolts $\frac{3}{4}$ " ϕ , open holes $\frac{13}{16}$ " ϕ , unless otherwise noted.
Finger Plate Expansion Joints shall be assembled in the proper position with the ends in place and shall be left assembled for shop inspection.
The finger plates shall be flame cut as provided in Article 505.04(k) of the Standard Specifications.
Field welding of construction accessories will not be permitted to beams or girders.
Reinforcement bars shall conform to the requirements of AASHTO M 31 or M 322 Grade 60.
Plan dimensions and details relative to existing structure have been taken from existing plans and are subject to nominal construction variations. It shall be the Contractor's responsibility to verify such dimensions and details in the field and make necessary approved adjustments prior to construction or ordering of materials. Such variations shall not be cause for additional compensation for a change in the scope of the work, however, the Contractor will be paid for the quantity actually furnished at the unit price for the work.
Prior to pouring the new concrete deck, all loose rust, loose mill scale, and other loose potentially detrimental foreign material shall be removed from the surfaces of the beams or girders in contact with concrete. The cost of this work will be included in the pay item covering removal of the existing concrete. All heavy rust and other tightly adhered potentially detrimental foreign matter shall also be removed from the surfaces of the beams or girders in contact with concrete. Tightly adhered paint may remain unless otherwise noted. The cost of this work will be paid for according to Article 109.04.
The existing structural steel coating contains lead. The Contractor shall take appropriate precautions to deal with the presence of lead on this project.
All Construction joints shall be bonded.
Existing design and fabrication plans are available upon request.
All structural steel shall be AASHTO M270 Grade 50 unless noted otherwise. Calculated weight = 48,120 lbs.
Field measurements are required to verify the proper dimensions of the finger plates and stools. See special provisions "Field Measurements".
Tapered shims shall be added under the stools as required by the Engineer to make a smooth finger joint. Cost included in "Furnishing Structural Steel".
Joint openings shall be adjusted according to Article 503.10(c) of the standard specifications when the deck is poured at an ambient temperature other than 50°F.
Existing structural steel that will be in contact with new structural steel shall be cleaned and painted prior to erection as required by the Special Provision "Cleaning and Painting Contact Surface Areas of Existing Steel Structures".
All new structural steel shall be shop painted with an inorganic zinc rich primer per AASHTO M 300, Type 1. Cost included with "Furnishing Structural Steel".
Traffic to be maintained during construction, see Roadway Plans for Stage Construction Details.



DESIGN STRESSES

f'_c = 3500 psi
 f_y = 60,000 psi (Reinf)
 f_y = 50,000 psi (M270 Grade 50)

BILL OF MATERIAL

ITEM	UNIT	TOTAL
Furnishing Structural Steel	L.S.	0.18
Furnishing Fabric Reinforced Elastomeric Trough	Foot	94
Field Measurements	L.S.	0.1
Storage Of Finger Plate Joints	Cal. Day	30

Details shown in these plans are to be used for the fabrication of the finger plates and troughs. Only the indicated payitems are part of this contract. Any details, notes and references to other work or payitems are provided for INFORMATION ONLY.

ILLINOIS DEPARTMENT OF TRANSPORTATION

KEY PLAN

F.A.I. ROUTE 90/94 NORTHBOUND (DAN RYAN EXPRESSWAY)
OVER SOUTH BRANCH - CHICAGO RIVER
COOK COUNTY
S.N. 016-1113 - PIER 1

REVISIONS	
NAME	DATE

SCALE: VERT. 1" = 10'
HORIZ. 1" = 40'
DATE: 3/22/05

GREENE & BRADFORD, INC.
OF SPRINGFIELD
REGISTERED PROFESSIONAL ENGINEERS
ILLINOIS LICENSE NO. 04286-W01
PROFESSIONAL SEAL NO. 04286-W01
ISS. FEB. 28, 2005, EXPI. FEB. 28, 2010

DRAWN BY: LANDREY
DESIGNED BY: SANFORD
CHECKED BY: -
COMPUTER FILE NO. 04286-W01-NB-KEY
PROJECT 04286-W01
6/15/05-MML

FILE NAME = sfile#
PLOT SCALE = splot#
PLOT TIME = splottime
OPERATOR = splotop