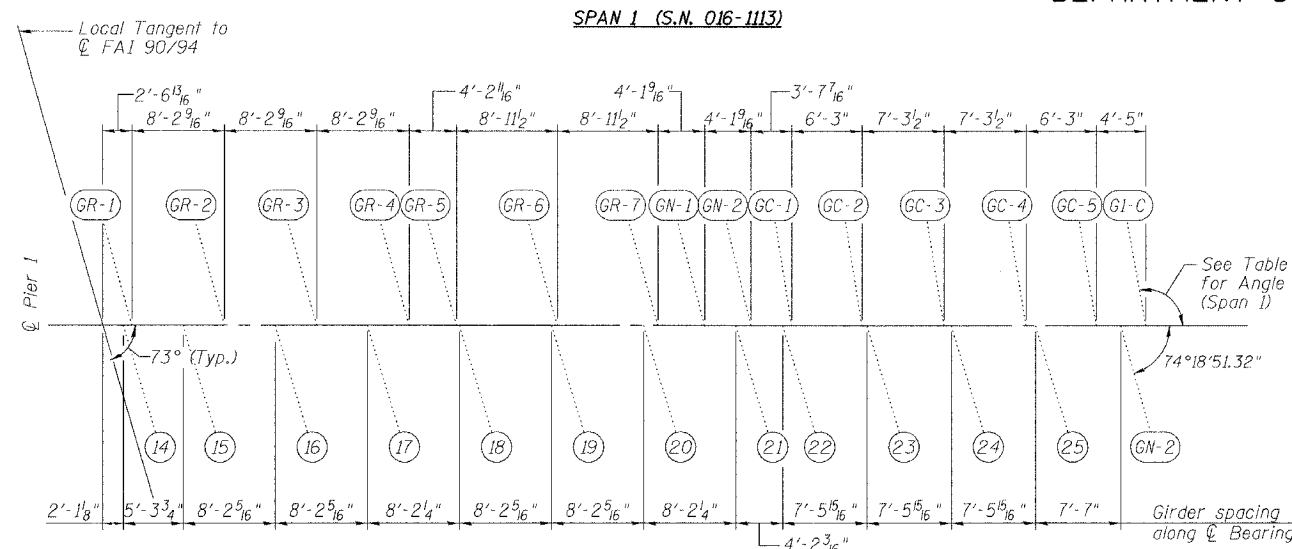


STATE OF ILLINOIS
DEPARTMENT OF TRANSPORTATION

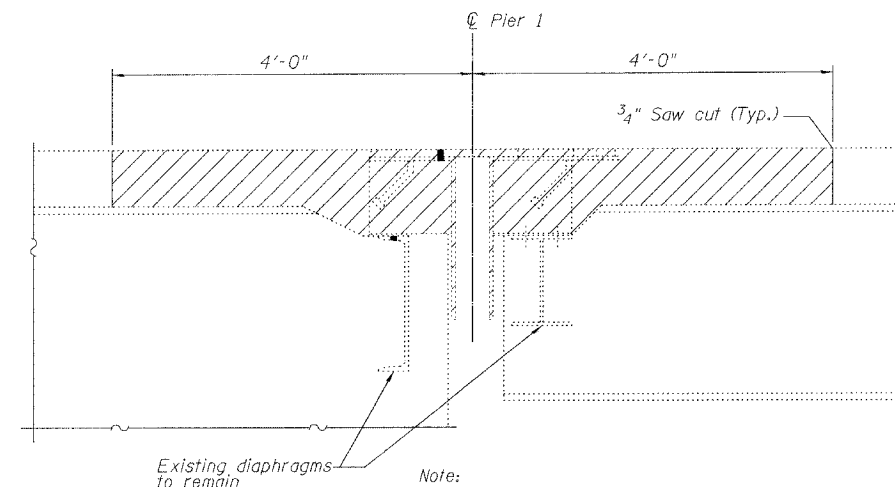
ROUTE NO. FAI 90/94	SECTION *	COUNTY COOK	TOTAL SHEETS 93	SHEET NO. 57
FED. ROAD DIST. NO.				
S.U. LINE				
FED. AID PROJECT				

* 2005-008F
Contract #62919

SHEET NO. 2
9 SHEETS



Girder	Angle
GR-1	105°33'08"
GR-2	105°33'09"
GR-3	105°33'09"
GR-4	105°33'09"
GR-5	105°35'13"
GR-6	105°39'27"
GR-7	105°43'31"
GN-1	104°31'37"
GN-2	103°26'38"
GC-1	98°54'18"
GC-2	98°58'51"
GC-3	99°04'13"
GC-4	99°09'41"
GC-5	99°14'25"
GI-C	100°11'18"

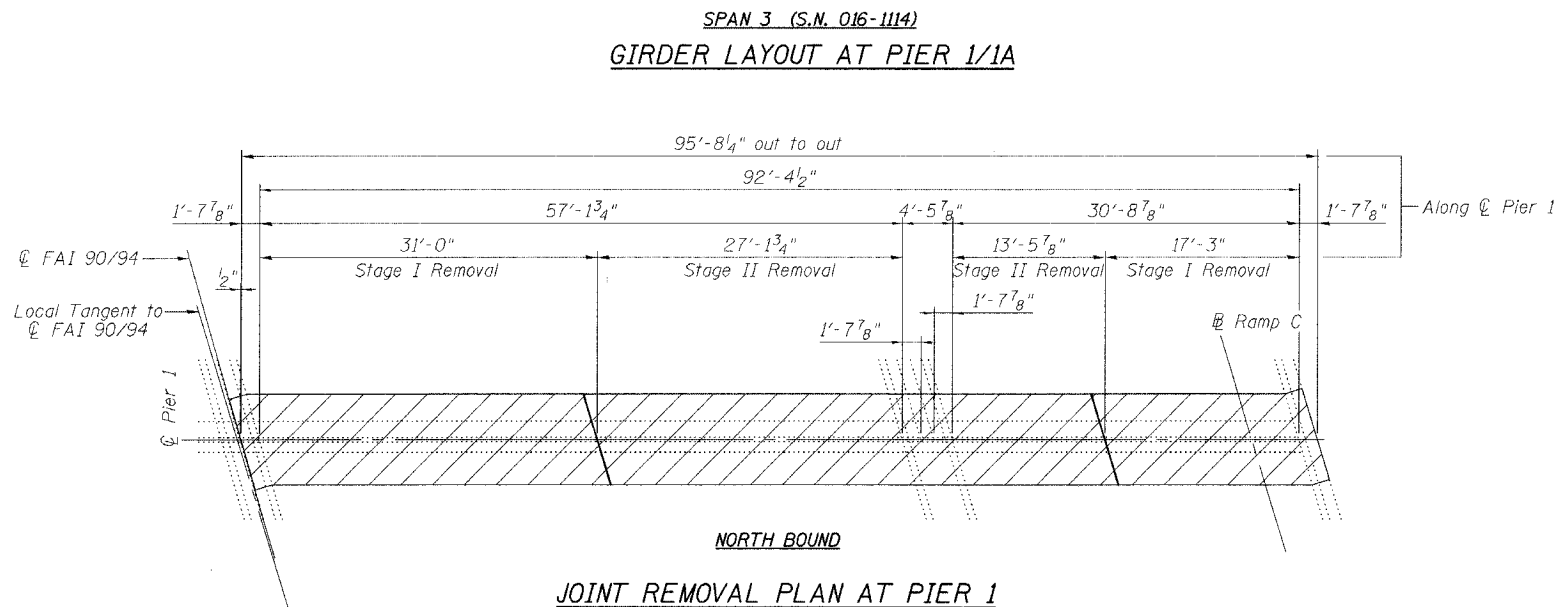


Note:
Any reinforcement bars that are damaged during concrete removal operations shall be repaired or replaced using an approved bar splicer or anchorage system. Cost included with "Concrete Removal".

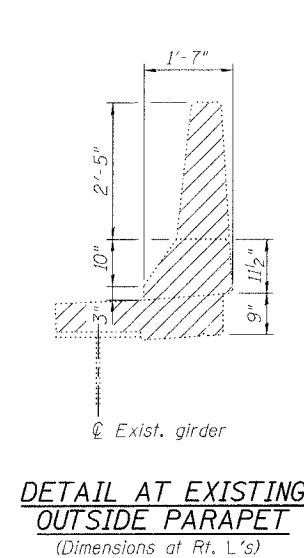
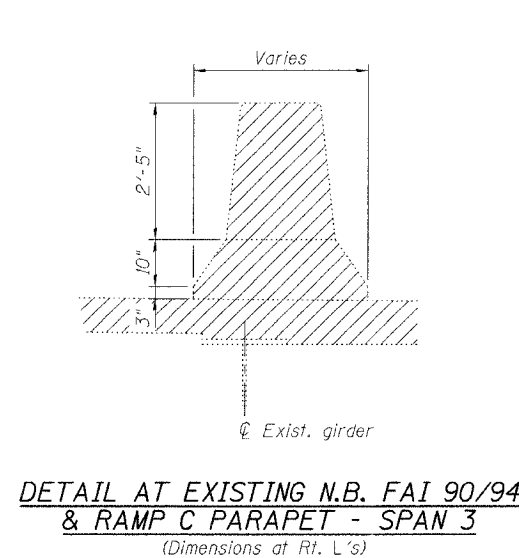
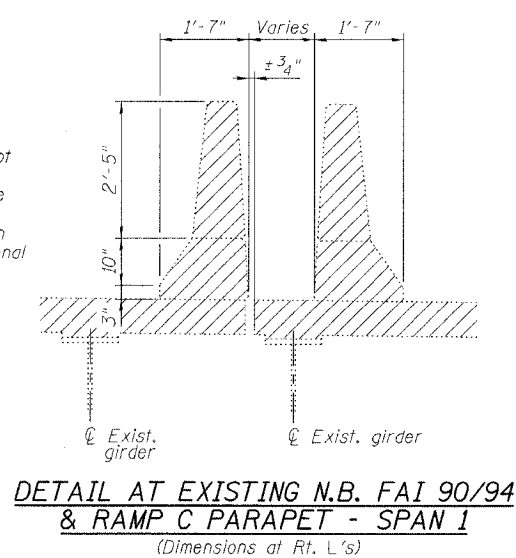
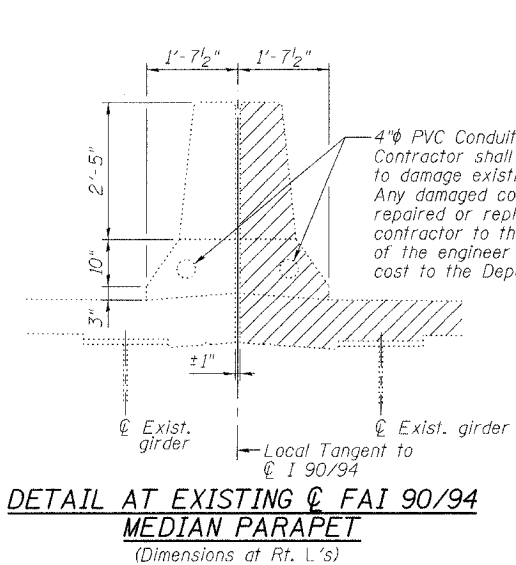
Existing finger plates, stools, drainage trough and hardware shall be removed. Cost included with "Concrete Removal".

SECTION AT
EXISTING FINGER PLATE

(Dimensions at Rt. L's)



Notes:
Hatched Area indicates "Concrete Removal".
Existing transverse bars in the deck are placed at right angles to $\text{C} \text{ Roadway}$. Existing transverse bars extending into removal areas shall be cut to miss the new finger joint, cleaned and incorporated into the new construction.
Longitudinal reinforcement extending into removal areas shall be cleaned, straightened and incorporated into the new construction except as noted on Section A-A on Sheet 4.



REVISIONS	
NAME	DATE

ILLINOIS DEPARTMENT OF TRANSPORTATION
**FINGER PLATE EXPANSION JOINT
REMOVAL DETAILS**
F.A.I. ROUTE 90/94 NORTHBOUND (DAN RYAN EXPRESSWAY)
OVER SOUTH BRANCH - CHICAGO RIVER
COOK COUNTY
S.N. 016-1113 - PIER 1

SCALE: VERT. _____
HORIZ. _____
DATE: 3/22/05

DRAWN BY: LANDREY
DESIGNED BY: SANFORD
CHECKED BY: _____

GREENE & BRADFORD, INC.
OF SPRINGFIELD

COMPUTER FILE NO.
04286-W01-NB-REM
PROJECT 04286-W01
6/21/05-MML

FILE NAME = SP1616.dwg
SCALE = 1/8" = 1'-0"
PLOT DATE = 6/21/05
PLOT TIME = 05:42:29 AM
OPERATOR = micheliei