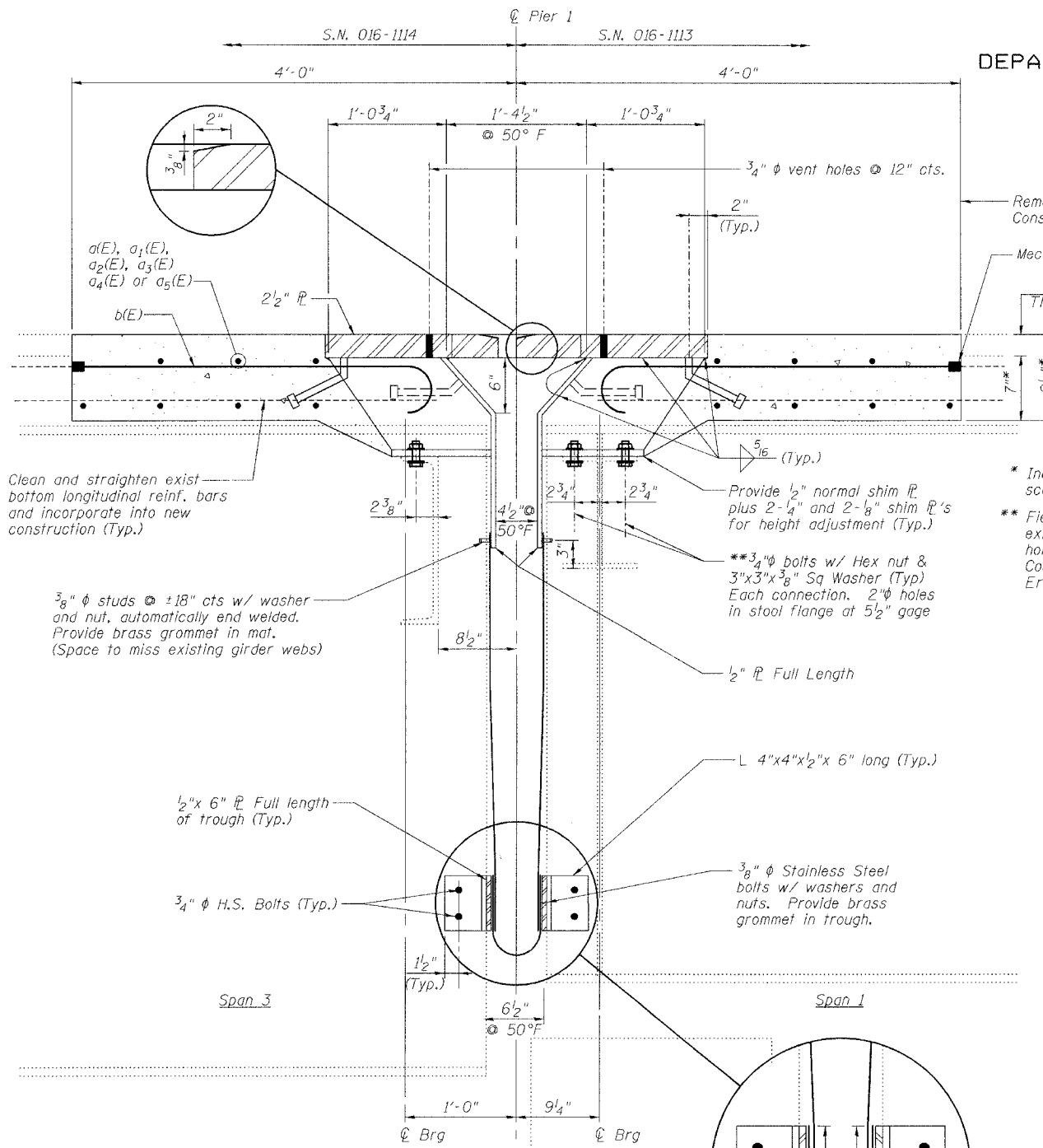


STATE OF ILLINOIS
DEPARTMENT OF TRANSPORTATION

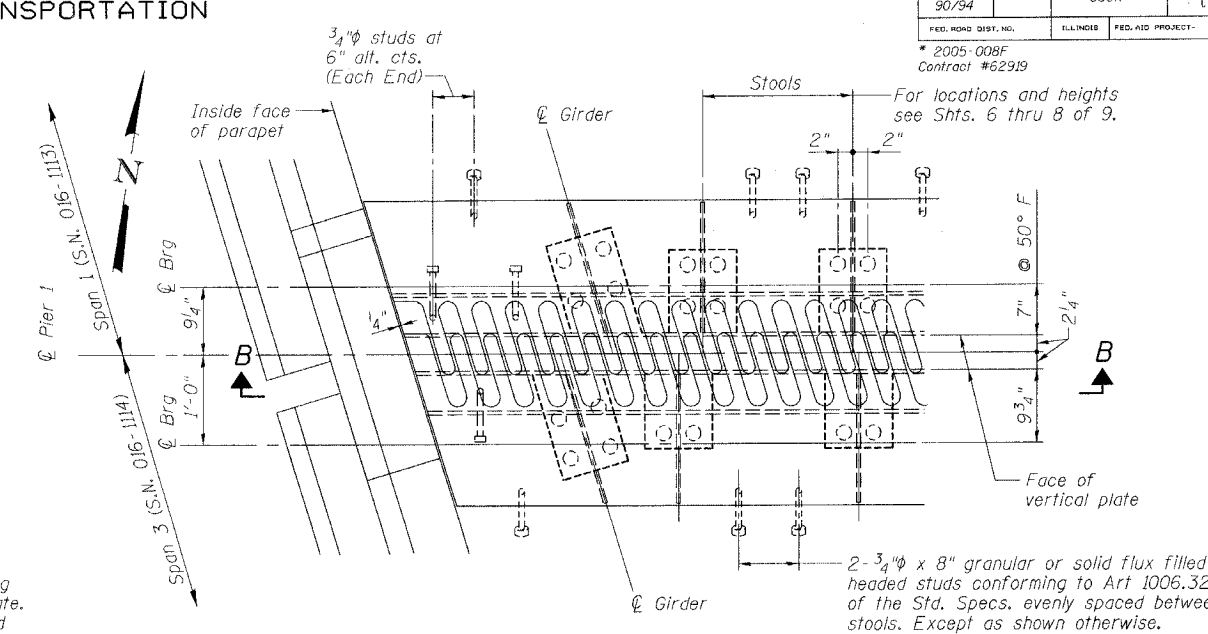
ROUTE NO. FAI 90/94	SECTION *	COUNTY COOK	SHEET NO. 93	SHEET 59	SHEET NO. 4 9 SHEETS
------------------------	--------------	----------------	-----------------	-------------	-------------------------

* 2005-008F
Contract #62919

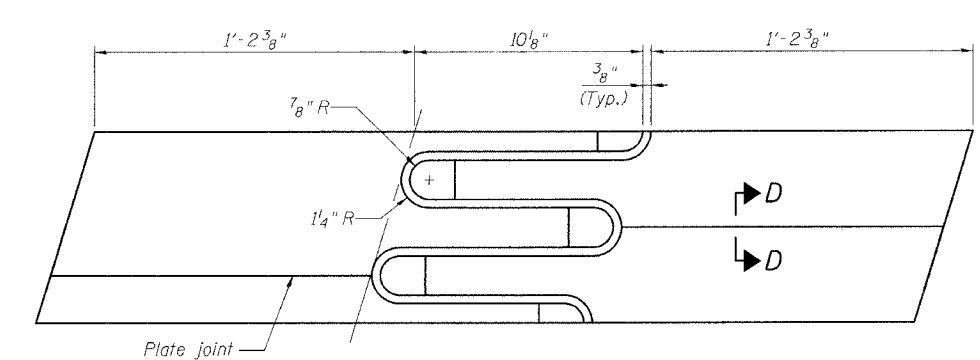


Removal Line & Const. Joint
Mechanical splice (Typ.)
Thin concrete overlay

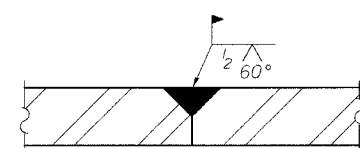
* Includes 1/2" deck scarification
** Field drill 1 3/16" phi holes in existing girder top flanges using existing girder top flanges as a template. Cost included in "Furnishing and Erecting Structural Steel."



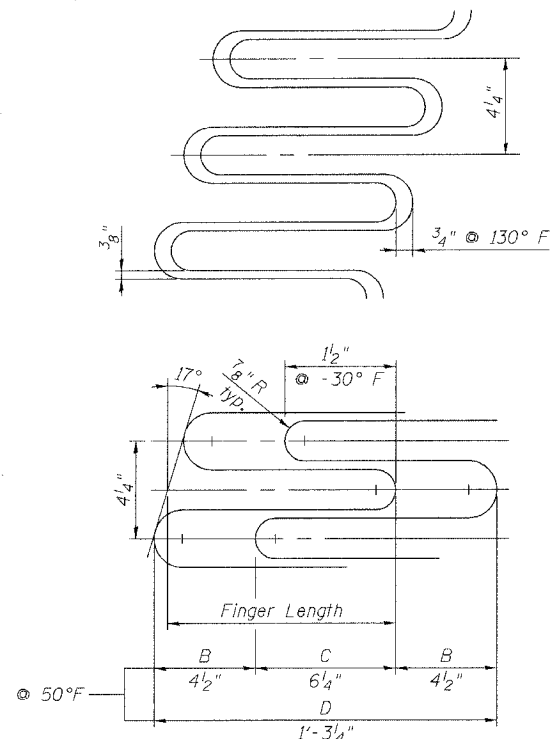
PLAN



FLAME CUTTING DIAGRAM
(Proposed Finger R - Cut from 2 1/2" x 3'-1 3/16" R)



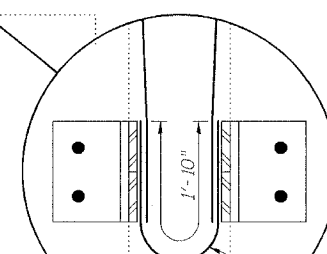
SECTION D-D



FINGER DETAIL

Finger Length = 10 1/8"
Weld Length = 12 1/4"
Weld Size = 5/16"
Expansion length = 477.4"

SECTION A-A



Fabric reinforced elastomeric trough

NOTES

- The Contractor shall bolt the Stools of the Fingerplate Joint Assembly to the top of existing girders, as shown in Section A-A of this drawing.
- Stainless steel bolts, washers and nuts shall meet the requirements of ASTM A193.
- The furnishing of all necessary hardware, stainless steel bolts, studs and washers, plates and angles shall be included with "Furnishing Structural Steel".
- For Section B-B, see Sheet 5 of 9.

REVISIONS	
NAME	DATE

ILLINOIS DEPARTMENT OF TRANSPORTATION
PIER 1 JOINT DETAILS
F.A.I. ROUTE 90/94 NORTHBOUND (DAN RYAN EXPRESSWAY)
OVER SOUTH BRANCH - CHICAGO RIVER
COOK COUNTY
S.N. 016-1113 - PIER 1

SCALE: VERT. HORIZ.
DATE: 3/22/05

DRAWN BY: LANDREY
DESIGNED BY: SANFORD
CHECKED BY: -

GREENE & BRADFORD, INC.
OF SPRINGFIELD

COMPUTER FILE NO.
04286-W01-NB-FPJ
PROJECT 04286-W01
6/21/05-MML

FILE NAME = #FILES
PLOT DATE = 6/21/2005
PLOT TIME = 10:54:17 AM
OPERATOR = michellel