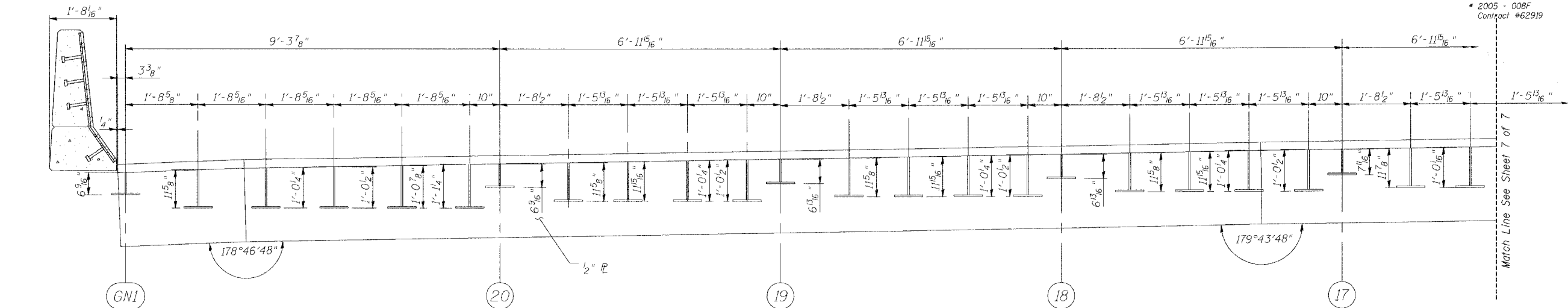


STATE OF ILLINOIS
DEPARTMENT OF TRANSPORTATION

ROUTE NO.	SECTION	COUNTY	TOTAL SHEETS	SHEET NO.
FA1 90/94	#	COOK	93	70
FED. ROAD DIST. NO.	ILLINOIS	FED. AID PROJECT		

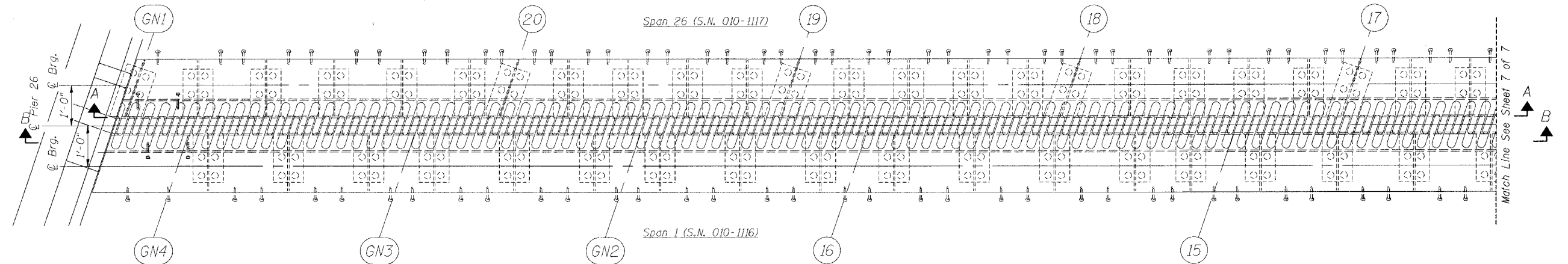
SHEET NO. 6
8 SHEETS

* 2005 - 008F
Contract #62919

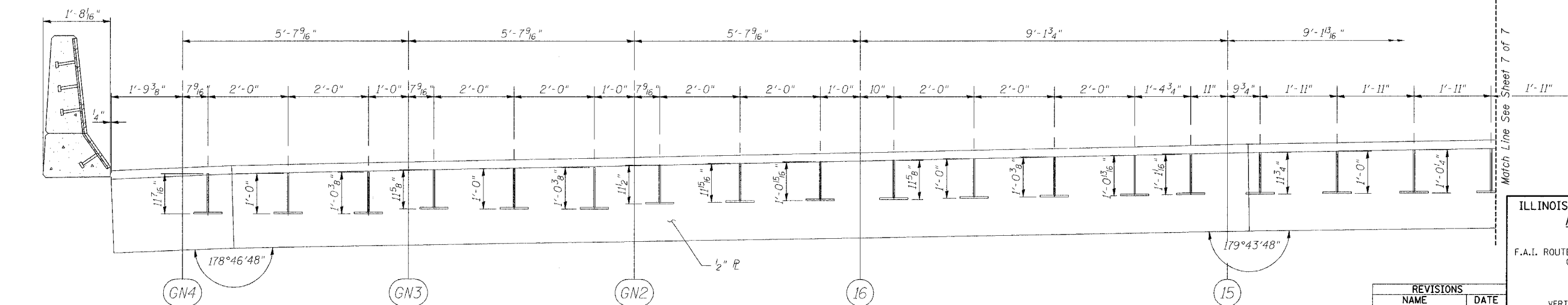


SECTION A-A

(Spacing along Face of 1/2" Vert. R.)



PLAN OF FINGER R AT PIER 26 (NORTHBOUND)



SECTION B-B

(Spacing along Face of 1/2" Vert. R.)

ILLINOIS DEPARTMENT OF TRANSPORTATION
**FINGER PLATE PLAN
AND ELEVATION**
F.A.I. ROUTE 90/94 NORTHBOUND (DAN RYAN EXPRESSWAY)
OVER 28th ST. TO S. STEWART ST.
COOK COUNTY
S.N. 016-1117 - PIER 26

REVISIONS	
NAME	DATE

SCALE: VERT. _____
HORIZ. _____
DATE: 2/17/05

DRAWN BY: HEBERLING
DESIGNED BY: SANFORD
CHECKED BY: _____

GREENE & BRADFORD, INC.
OF SPRINGFIELD
ENGINEERS, ARCHITECTS, PLANNERS
AND SURVEYORS
1001 N. WASHINGTON ST., SUITE 200, SPRINGFIELD, ILL. 62761
TEL: 217-223-8800 FAX: 217-223-8801
WWW.GREENE-AND-BRADFORD.COM

COMPUTER FILE NO.
04286-W03-PE1
PROJECT 04286-W03
6/17/05-MML

FILE NAME = \$FILE\$
PLOT SCALE = \$PLOTSCALE\$
PLOT DATE = \$PLOTDATE\$
PLOT OPERATOR = \$PLOTOPERATOR\$