

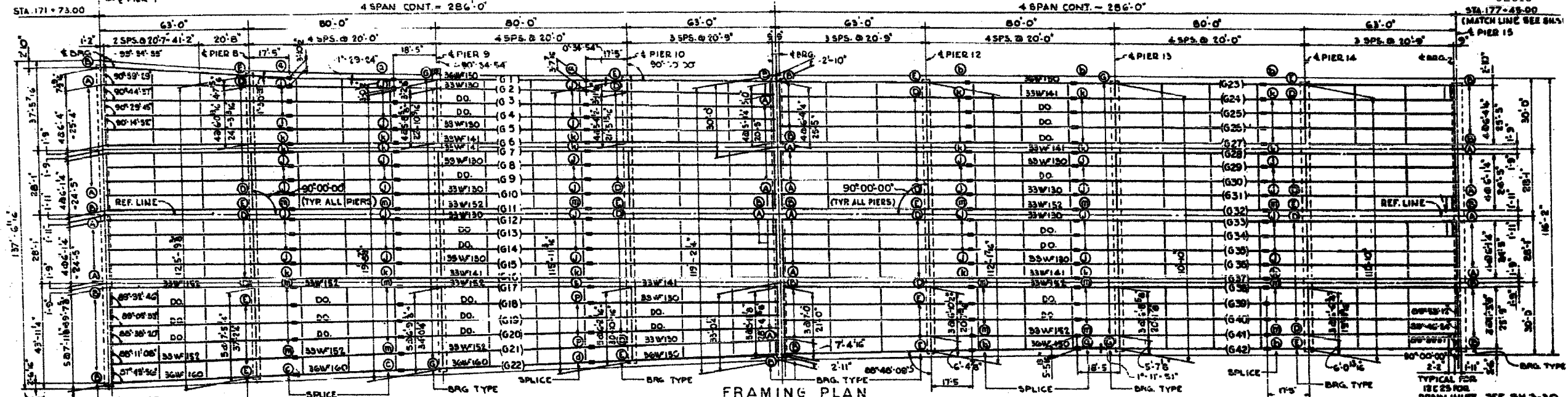
F.A.I.	SECTION	COUNTY	TOTAL SHEETS	SHEET NO.
94/90	2005-008F	COOK	93	74
STA.	TO STA.			
FED. ROAD DIST. NO.	ILLINOIS	FED. AID PROJECT		

CONTRACT 2525.3-2M CONTRACT 2525.3-1M  
BY OTHERS

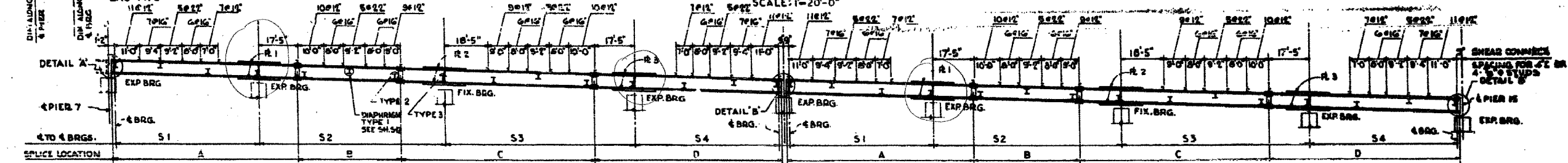
UNIT 1

UNIT 2

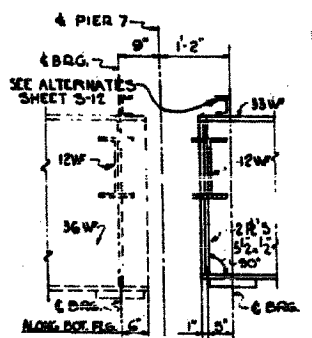
62919



FRAMING PLAN



GIRDER ELEVATION

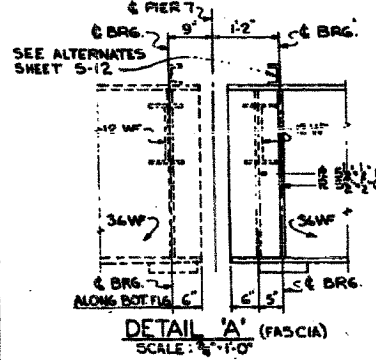


DETAIL A (INTERIOR)  
SCALE: 1/2" = 1'-0"

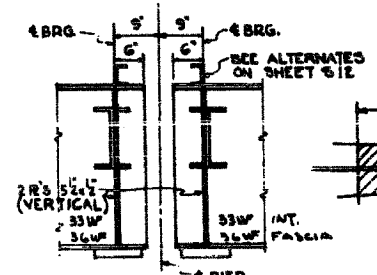
NOTES ALL DIMENSIONS ARE IN THE HORIZONTAL PLANE AND ALONG THE G OF THE GIRDER WEB.

GIRDER	A	B	C	D	S-1	S-2	S-3	S-4	E-1	E-2	E-3
1	80'-3"	44'-2"	81'-0"	80'-2"	61'-11"	80'-0"	80'-0"	62'-3"	11'-18"	11'-17"	11'-16"
2	79'-9"	44'-2"	81'-0"	80'-2"	61'-10"	80'-0"	80'-0"	62'-3"	10'-18"	10'-18"	10'-18"
3	79'-9"	44'-2"	81'-0"	80'-2"	61'-10"	80'-0"	80'-0"	62'-3"	10'-16"	10'-18"	10'-18"
4	79'-9"	44'-2"	81'-0"	80'-2"	61'-10"	80'-0"	80'-0"	62'-3"	10'-16"	10'-18"	10'-18"
5	79'-9"	44'-2"	81'-0"	80'-2"	61'-10"	80'-0"	80'-0"	62'-3"	10'-16"	10'-18"	10'-18"
6											
7, 16									10'-15"	10'-15"	10'-15"
8, 10, 13, 14, 15									10'-15"	10'-15"	10'-15"
11									10'-15"	10'-15"	10'-15"
12									10'-15"	10'-15"	10'-15"
17									10'-15"	10'-15"	10'-15"
18	79'-9"	44'-2"	81'-0"	80'-2"	61'-10"	80'-0"	80'-0"	62'-3"	10'-17"	10'-17"	10'-17"
19	79'-9"	44'-2"	81'-0"	80'-2"	61'-10"	80'-0"	80'-0"	62'-3"	10'-17"	10'-17"	10'-17"
20	79'-9"	44'-2"	81'-0"	80'-2"	61'-10"	80'-0"	80'-0"	62'-3"	10'-17"	10'-17"	10'-17"
21	79'-9"	44'-2"	81'-0"	80'-2"	61'-10"	80'-0"	80'-0"	62'-3"	10'-17"	10'-17"	10'-17"
22	80'-2"	44'-2"	81'-0"	80'-2"	61'-10"	80'-0"	80'-0"	62'-3"	11'-18"	11'-17"	11'-18"
23	80'-2"	44'-2"	81'-0"	80'-2"	61'-10"	80'-0"	80'-0"	62'-3"	11'-18"	11'-17"	11'-18"
24, 25, 26									10'-15"	10'-15"	10'-15"
27									10'-15"	10'-15"	10'-15"
28, 37									10'-15"	10'-15"	10'-15"
29, 30, 34, 36									10'-15"	10'-15"	10'-15"
32									10'-15"	10'-15"	10'-15"
33									10'-15"	10'-15"	10'-15"
35									10'-15"	10'-15"	10'-15"
38									10'-15"	10'-15"	10'-15"
39									10'-15"	10'-15"	10'-15"
40									10'-15"	10'-15"	10'-15"
41	80'-2"	44'-2"	81'-0"	80'-2"	61'-10"	80'-0"	80'-0"	62'-3"	10'-16"	10'-17"	10'-16"
42	80'-2"	44'-2"	81'-0"	80'-2"	61'-10"	80'-0"	80'-0"	62'-3"	11'-18"	11'-17"	11'-18"

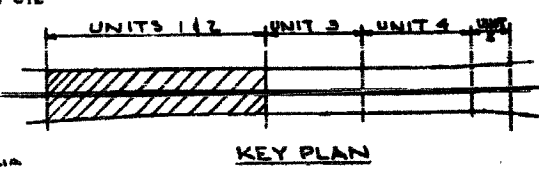
NOTE: ALL DIMENSIONS ARE IN THE HORIZONTAL PLANE AND ALONG THE G OF THE GIRDER WEB. DIMENSIONS MARKED WITH (O) ARE NOT STRAIGHT LINES BETWEEN BEARINGS.



DETAIL A (FASCIA)  
SCALE: 1/2" = 1'-0"



DETAIL B  
SCALE: 1/2" = 1'-0"



KEY PLAN

SPlice PLATES & FILL PLATES BILLED ON SHEET S-15 BEARINGS ON SHEET S-18

ITEM	UNIT	QUANTITY
GIRDERS	POUND	1,245,375
DIAPHRAGMS	POUND	148,825

ASTM A7  
INCLUDED IN WEIGHT ON SHEET S-15

BILL OF MATERIAL

Sheet S13 of 64

REVISIONS	NAME	DATE

CITY OF CHICAGO  
DEPARTMENT OF PUBLIC WORKS  
BUREAU OF ENGINEERING  
SOUTH ROUTE SUPERHIGHWAY  
ELEVATED HIGHWAY  
W. 15TH ST. TO W. MAXWELL ST.  
SECTION 2-2525.3-1H

STEEL FRAMING PLAN  
UNITS 1&2

DE LUIGI, GATHER & COMPANY  
CONSULTING ENGINEERS  
CHICAGO  
DATE: JUNE 1961  
SCALE: AS NOTED SHEET S15 OF 64 SHEETS

ILLINOIS DEPARTMENT OF TRANSPORTATION  
F.A.I. 94/90 (DAN RYAN EXPRESSWAY)  
FABRICATION CONTRACT  
NB DAN RYAN ELEVATED BRIDGE  
REPAIR FROM 15TH TO 28TH STREETS  
EXISTING PLAN INFORMATION SN 016-1110  
SCALE: NTS  
DATE: 5/23/2005  
DRAWN BY: BDC  
CHECKED BY: BLU

FOR INFORMATION ONLY

DESIGNED BY J.B.  
DRAWN BY H.M.  
CHECKED BY A.B.  
IN CHARGE H.S. WOLF  
APPROVED BY L.H. RIAN

BOWMAN, BARRETT & ASSOCIATES INC.  
CONSULTING ENGINEERS  
138 EAST RANDOLPH STREET SUITE 2666 CHICAGO, ILLINOIS 60601  
JOB NO. 640

5/23/2005 9:26:30 AM