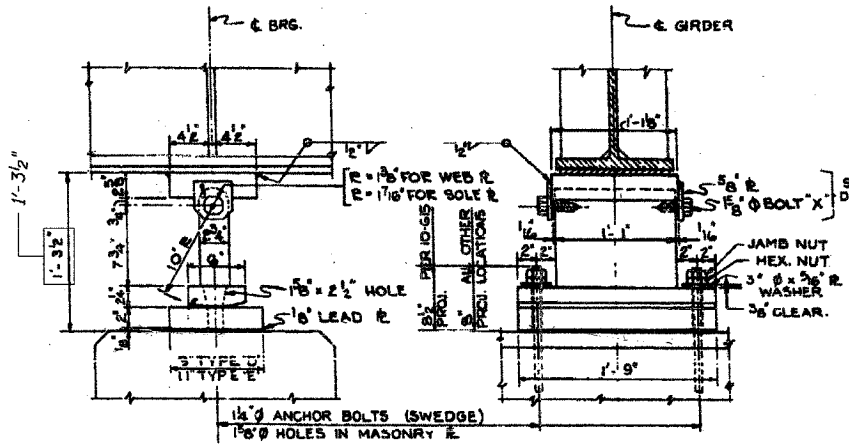


EXPANSION BEARING TYPE 'A'
SCALE: 1/2" = 1'-0"

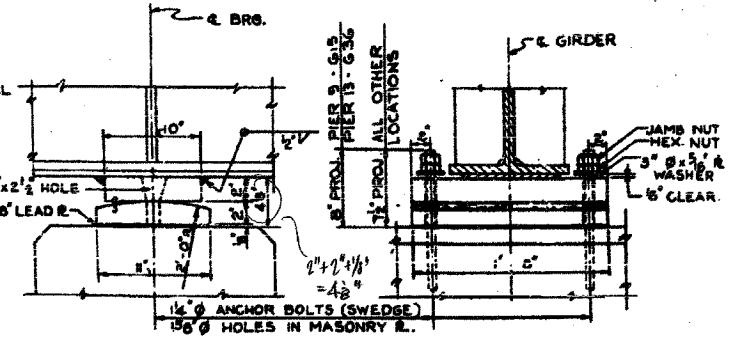
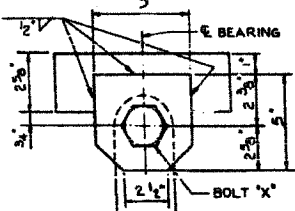
MATERIAL	TYPE 'A' (80 REQ'D)
SOLE PL.	9" x 2" x 1'-1"
MASONRY R.	14" x 2" x 1'-1"
ROLLER	8" x 1'-3 1/2"
2 - BARS	2" x 2" x 2'-5"
1/2" LEAD R.	14" x 10" x 1'-1"
4 - ANCHOR BOLTS	1" x 1'-6"
4 - R. WASHERS	2" x 2" x 3/16"

PROJ. PIER	GIRDER
5 1/2	11 G 4 & 15
5	11 G 5, 18 & 19
4 1/2	11 G 2, 6, 8-10, 12-14, 16, 17 & 36
15	G 29 & 36
4	ALL OTHER LOCATIONS



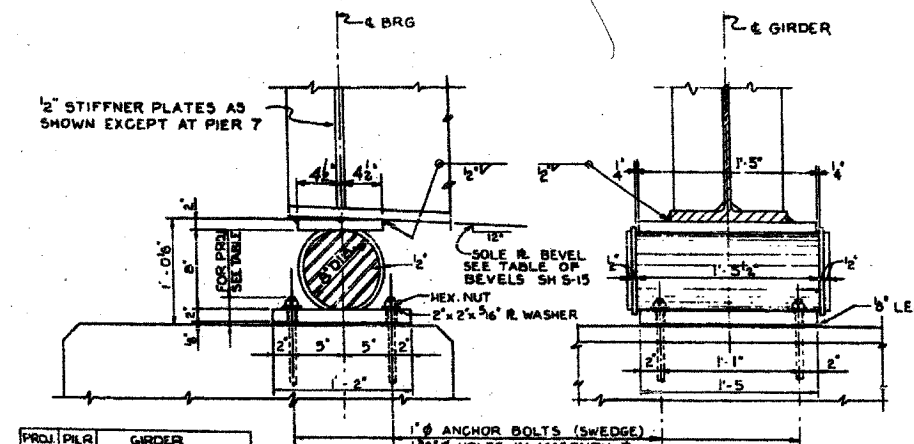
EXPANSION BEARING TYPES 'D' & 'E'
SCALE: 1/2" = 1'-0"

MATERIAL	TYPE 'D' (104 REQ'D)	TYPE 'E' (43 REQ'D)
SOLE PL.	9" x 2 3/8" x 1'-1 1/2"	9" x 2 3/8" x 1'-1 1/2"
MASONRY R.	9" x 2" x 1'-9"	11" x 2" x 1'-9"
WEB R.	9 1/2" x 2 3/4" x 1'-1"	9 1/2" x 2 3/4" x 1'-1"
ROCKER R.	6" x 2 1/4" x 1'-9"	6" x 2 1/4" x 1'-9"
1/2" LEAD R.	9" x 10" x 1'-9"	11" x 10" x 1'-9"
2 - ANCHOR BOLTS	1 1/2" x 1'-9"	1 1/2" x 1'-9"
2 - R. WASHERS	3" x 3" x 3/16"	3" x 3" x 3/16"
2 - BOLTS "X"	1 1/2" x 3 1/2"	1 1/2" x 3 1/2"
2 - 3/8" R.	5" x 3/8" x 0'-5"	5" x 3/8" x 0'-5"



FIXED BEARING TYPE 'G'
SCALE: 1/2" = 1'-0"

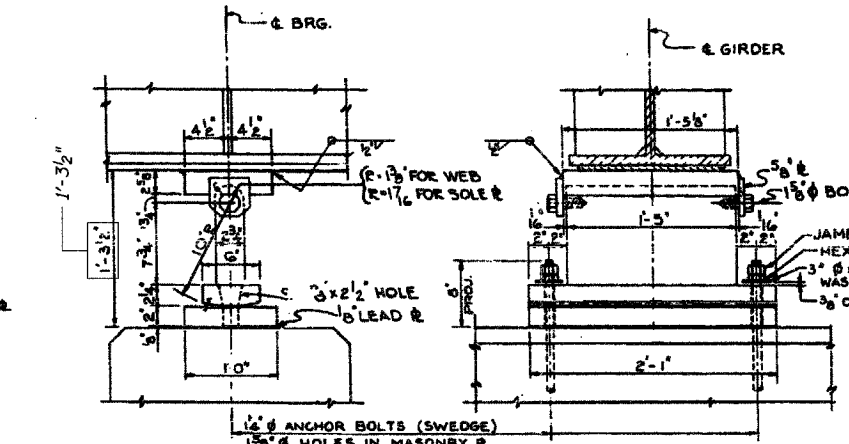
MATERIAL	TYPE 'G' (84 REQ'D)
SOLE PL.	10" x 2" x 1'-8"
MASONRY R.	11" x 2" x 1'-8"
1/2" LEAD R.	11" x 10" x 1'-8"
2 - ANCHOR BOLTS	1 1/2" x 1'-9"
2 - R. WASHERS	3" x 3" x 3/16"



EXPANSION BEARING TYPE 'B'
SCALE: 1/2" = 1'-0"

MATERIAL	TYPE 'B' (79 REQ'D)
SOLE PL.	9" x 2" x 1'-5"
MASONRY R.	14" x 2" x 1'-5"
ROLLER	8" x 1'-7 1/2"
2 - BARS	2" x 2" x 2'-5"
1/2" LEAD R.	14" x 10" x 1'-5"
4 - ANCHOR BOLTS	1" x 1'-6"
4 - R. WASHERS	2" x 2" x 3/16"

PROJ. PIER	GIRDER
11	G 1 & 11
4 1/2	19 G 23, 37 & 58
19	G 67
4	ALL OTHER LOCATIONS



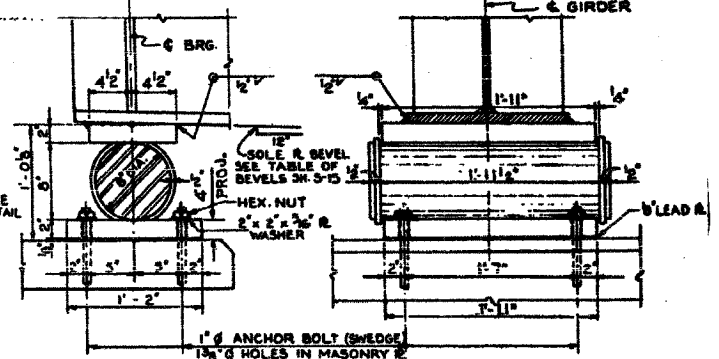
EXPANSION BEARING TYPE 'F'
SCALE: 1/2" = 1'-0"

MATERIAL	TYPE 'F' (1 REQ'D)
SOLE PL.	9" x 2 3/8" x 1'-5 1/2"
MASONRY R.	12" x 2" x 2'-1"
WEB R.	9 1/2" x 2 3/4" x 1'-5"
ROCKER R.	6" x 2 1/4" x 2'-1"
1/2" LEAD R.	12" x 10" x 2'-1"
2 - ANCHOR BOLTS	1 1/2" x 1'-9"
2 - R. WASHERS	3" x 3" x 3/16"
2 - BOLTS "X"	1 1/2" x 3 1/2"
2 - 3/8" R.	5" x 3/8" x 0'-5"

FOR LOCATION OF BEARINGS SEE FRAMING PLANS SHT. 5-13, 5-14 & 5-15.



NOTE: ROCKER R. AND WEB R. FOR EXPANSION BRG. TYPES 'D' & 'F' CAN BE GRADE 65-35 CARBON STEEL CASTING. QUANTITIES INCLUDED IN BILL OF MATERIAL SHEET 5-19 FOR FILL PLATES AT BEARINGS, SEE SHEET 5-15 FOR ADDITIONAL DETAILS SEE SHEET 5-19



EXPANSION BEARING TYPE 'C'
SCALE: 1/2" = 1'-0"

MATERIAL	TYPE 'C' (9 REQ'D)
SOLE PL.	5" x 2" x 1'-11"
MASONRY R.	14" x 2" x 1'-11"
ROLLER	8" x 1'-11"
2 - BARS	2" x 2" x 2'-5"
1/2" LEAD R.	14" x 10" x 1'-11"
4 - ANCHOR BOLTS	1" x 1'-6"
4 - R. WASHERS	2" x 2" x 3/16"

Designed By N.S.W.
 Drawn By M.M.M.
 Checked By W.J.C.
 In Charge N.S.WULF
 Approved By L.N.RIAN

CITY OF CHICAGO
 DEPARTMENT OF PUBLIC WORKS
 BUREAU OF ENGINEERING
**SOUTH ROUTE SUPERHIGHWAY
 ELEVATED HIGHWAY**

W. 15 TH ST. TO W. MAXWELL ST.
 SECTION 2-2525.3-11

BEARINGS
 UNITS 1, 2, 3 & 4
 DE LEUW, CATHEN & COMPANY
 CONSULTING ENGINEERS CHICAGO
 DATE: JUNE 1961
 SCALE: AS NOTED
 SHEET 518 OF 64 SHEETS

Sheet 518 of 64

REVISIONS	NAME	DATE

ILLINOIS DEPARTMENT OF TRANSPORTATION
 F.A.I. 94/90 (DAN RYAN EXPRESSWAY)
 FABRICATION CONTRACT
 NB DAN RYAN ELEVATED BRIDGE
 REPAIR FROM 15TH TO 28TH STREETS
 EXISTING PLAN INFORMATION SN

SCALE: NTS
 DATE: 5/23/2005
 DRAWN BY: BDC
 CHECKED BY: BLU

FOR INFORMATION ONLY

5/23/2005