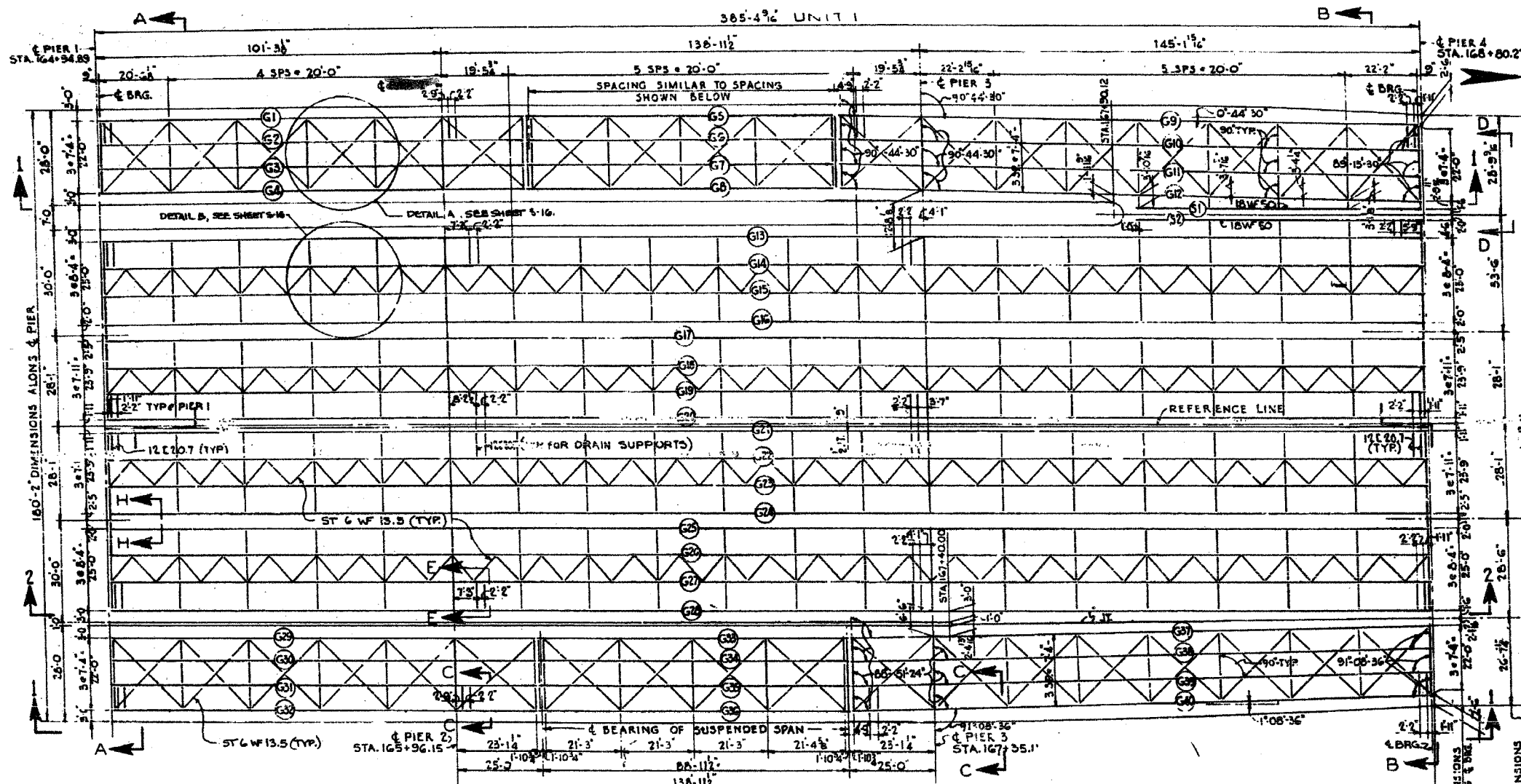


F.A.I.	SECTION	COUNTY	TOTAL SHEETS	SHEET NO.
94/90	2005-008F	COOK	93	78
STA.	TO STA.			
FED. ROAD DIST. NO.	ILLINOIS	FED. AID PROJECT		
62919				



**STRUCTURAL STEEL NOTES**

ALL FURNISHING, FABRICATING, TRANSPORTING, ERECTING AND PAINTING OF STRUCTURAL STEEL SHALL BE IN ACCORDANCE WITH SECTION 54 AND 56 OF THE STANDARD SPECIFICATIONS.

EXCEPT WHERE OTHERWISE NOTED, ALL STRUCTURAL STEEL SHALL CONFORM TO SPECIFICATIONS FOR STEEL FOR BRIDGES AND BUILDINGS ASTM DESIGNATION A-7 AND ASTM DESIGNATION A-372 AND WHERE APPLICABLE, TO THE REQUIREMENTS OF ARTICLE 124.2, AND 124.3 (a) OF THE STANDARD SPECIFICATIONS.

**BEARING AND SPlice NOTES:-**

ALL GIRDER FIELD SPICES SHALL BE SUB-PUNCHED, REAMED AND MATCH-MARKED FOR SHIPMENT WHILE THE MEMBERS ARE SHOP ASSEMBLED IN PROPER ALIGNMENT, WITH OR WITHOUT DIAPHRAGMS. ALL GIRDER FIELD SPICES SHALL BE SUB-PUNCHED 1 1/16" Ø, REAMED TO 1 3/16" Ø FOR 3/4" Ø BOLTS AND REAMED TO 1 5/16" Ø FOR 7/8" Ø BOLTS.

ALL GIRDERS SHALL BE ERECTED FULL LENGTH IN THE SHOP BEFORE BEARING AND INSPECTION.

STRUCTURAL STEEL SHALL RECEIVE ONE SHOP COAT OF RED LEAD PAINT PARTS ACCESSIBLE AFTER ERECTION SHALL HAVE TWO SHOP COATS OF RED LEAD PAINT FOR ADDITIONAL SHOP AND FIELD PAINT LOADS, SEE THE SPECIAL PROVISIONS.

ALL ROLLERS, ROCKERS, BOLSTERS, BEARING PLATES, LEAD PLATES, PINTLES, ANCHOR BOLTS AND SPICES SHALL BE FABRICATED AND SET IN ACCORDANCE WITH ARTICLES 54.5 OF THE STANDARD SPECIFICATIONS AND SHALL BE FINISHED IN ACCORDANCE WITH ARTICLE 54.5 (a). THESE ITEMS ARE INCLUDED IN THE WEIGHT OF STRUCTURAL STEEL.

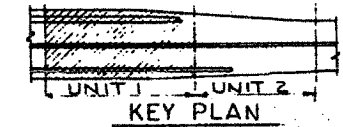
SPICE PLATES TO BE MATCH-MARKED FOR SHIPMENT.

ANCHOR BOLTS SHALL BE SET BEFORE BOLTING DIAPHRAGMS OVER PIERS AND ABUTMENTS.

FINISHED SURFACES OF BEARINGS AND ROLLERS SHALL BE TREATED WITH ANTI-RUST COMPOUND BEFORE SHIPMENT AS STATED IN ARTICLE 54.4 OF THE STANDARD SPECIFICATIONS.

ALL FIELD CONNECTIONS SHALL BE MADE WITH 3/4" Ø OR 7/8" Ø HIGH STRENGTH BOLTS AS INDICATED.

ALL RIVETS, UNLESS OTHERWISE SHOWN OR NOTED, SHALL BE 3/4" Ø, OPEN HOLES 1 3/16" Ø.



**SUMMARY OF STRUCTURAL STEEL UNIT 1**

ITEM	UNIT	QUANTITY	QUANTITY
		ASTM A7	ASTM A91
GIRDERS	POUND	126,864	2,634,361
CROSS FRAMES	POUND	103,325	
LATERAL BRACING	POUND	81,800	
GIRDER BEARINGS	POUND	81,032	
EXPANSION GUARDS	POUND	599,011	2,634,361
<b>TOTAL</b>	<b>POUND</b>	<b>599,011</b>	<b>2,634,361</b>

INCLUDED IN SUMMARY ON SHEET 51

Designed By N. S. W.  
 Drawn By W. C. K.  
 Checked By R. S.  
 In Charge N. S. WULF  
 Approved By L. N. RIAN

**NOTES:**  
 FOR GIRDER DETAILS, SEE SHEETS 5-12 THRU 5-16  
 FOR SECTIONS A-A, B-B, & E-E, SEE SHEET 5-15  
 FOR SECTIONS C-C, D-D, & H-H, SEE SHEET 5-16

CITY OF CHICAGO  
 DEPARTMENT OF PUBLIC WORKS  
 BUREAU OF ENGINEERING  
**SOUTH ROUTE SUPERHIGHWAY  
 ELEVATED HIGHWAY**  
 W. 16 TH. ST. TO W. 15 TH. ST.  
 7' - 0" TO 6' - 2522.3' - 24'

**STEEL FRAMING PLAN  
 UNIT 1**

DE LEUW, CATHNER & COMPANY  
 CONSULTING ENGINEERS CHICAGO  
 SCALE: AS NOTED  
 DATE: AUGUST 1961  
 SHEET 5 11 OF 56 SHEETS

ILLINOIS DEPARTMENT OF TRANSPORTATION  
 F.A.I. 94/90 (DAN RYAN EXPRESSWAY)  
 FABRICATION CONTRACT  
 NB DAN RYAN ELEVATED BRIDGE  
 REPAIR FROM 15TH TO 28TH STREETS  
 EXISTING PLAN INFORMATION SN 016-1110

SCALE: NTS  
 DATE: 5/23/2005

DRAWN BY: BDC  
 CHECKED BY: BLU

REVISIONS	NAME	DATE

FOR INFORMATION ONLY

BOWMAN, BARRETT & ASSOCIATES INC.  
 CONSULTING ENGINEERS  
 114 EAST RANDOLPH STREET SUITE 2454 CHICAGO, ILLINOIS 60601  
 312.467.4400