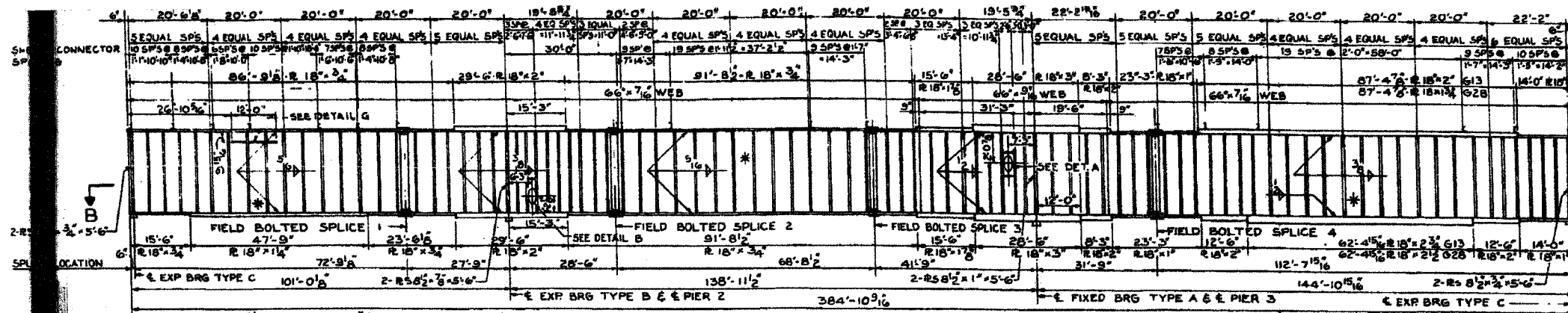
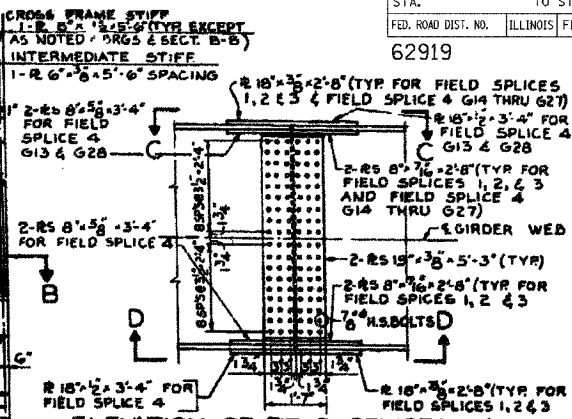


62919



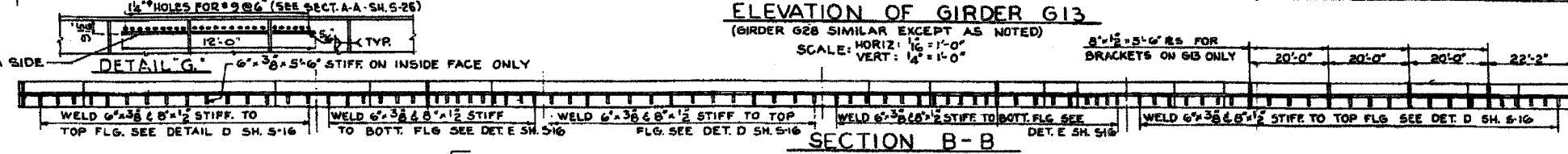
ELEVATION OF GIRDER G13
(GIRDER G28 SIMILAR EXCEPT AS NOTED)

SCALE: HORIZ: 1/8" = 1'-0"
VERT: 1/4" = 1'-0"

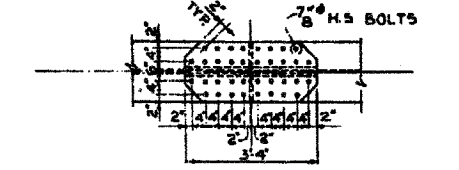


ELEVATION OF FIELD SPLICES 1, 2, 3 & 4
(SPLICE DETAILS APPLY TO ROWNY GIRDERS G13 THRU G28 ONLY)

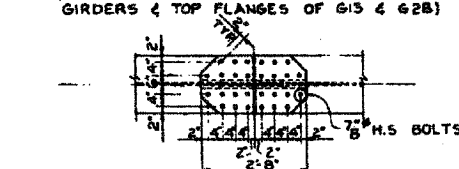
SCALE: 1/2" = 1'-0"



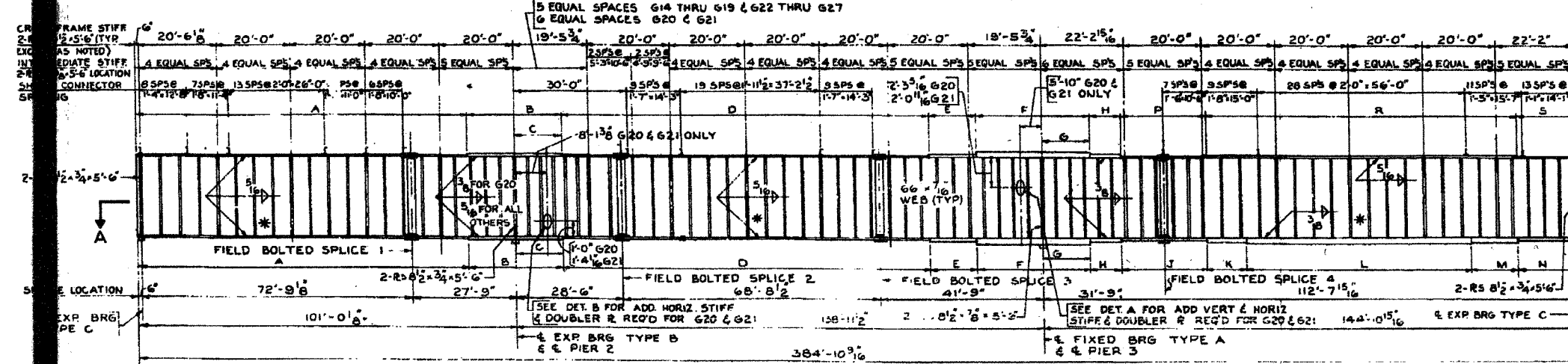
SECTION B-B



VIEW D-D
(FOR FIELD SPLICE 4 BOTT. FLANGES OF ALL GIRDERS & TOP FLANGES OF G13 & G28)

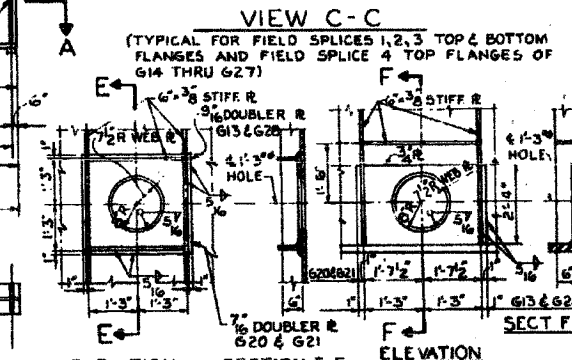


VIEW C-C
(TYPICAL FOR FIELD SPLICES 1, 2, 3 TOP & BOTTOM FLANGES AND FIELD SPLICE 4 TOP FLANGES OF G14 THRU G27)



ELEVATION OF GIRDERS G14 THRU G27

SCALE: HORIZ: 1/8" = 1'-0"
VERT: 1/4" = 1'-0"



ELEVATION SECTION E-E DETAIL B
(G13 & G28 AS SHOWN G20 & G28 SIMILAR)

SCALE: 1/2" = 1'-0"

NOTE:
FOR GIRDERS G16, G17, G20, G21, G24 & G25
USE 1-8" x 1/2" x 5'-6" STIFFENER R AT CROSSFRAME
CONNECTIONS AND 1-6" x 3/8" x 5'-6" STIFFENER R
WHERE NO CROSSFRAME CONNECTIONS ARE MADE.

WELDED PLATE GIRDER SCHEDULE

| GIRDER | A | B | C | D | E | F | G | H | J | K | L | M | N | P | R | S |
|---------------------|---|-----------------------|----------------------------|-----------------------------|-----------------------|-----------------------|-----------------------|-----------------------|-----------------------|------------------------|---------------------------|-----------------------|-----------------------|-----------------------|-----------------------|-----------------------|
| G15, G20 & G27 | 18'-3 1/2" x 89'-3 1/2" x 18'-1 1/2" x 23'-3" R | 11'-6" | 18'-3 1/2" x 101'-5 1/2" R | 18'-3 1/2" x 12'-6" R | 18'-2 1/2" x 24'-6" R | 11'-0" | 18'-1 1/2" x 10'-0" R | 18'-1 1/2" x 21'-0" R | 18'-1 1/2" x 9'-0" R | 18'-2 1/2" x 66'-10" R | 18'-1 1/2" x 9'-6" R | 18'-1 1/2" x 17'-0" R | 18'-3 1/2" x 21'-0" R | 18'-1 1/2" x 85'-4" R | 18'-3 1/2" x 17'-6" R | |
| G17, G18 & G19 | 18'-3 1/2" x 80'-6" R | 18'-1 1/2" x 21'-0" R | 10'-6" | 18'-3 1/2" x 105'-11 1/2" R | 18'-1 1/2" x 11'-6" R | 18'-2 1/2" x 23'-9" R | 10'-9" | 18'-1 1/2" x 49'-3" R | 18'-1 1/2" x 23'-0" R | 18'-1 1/2" x 10'-0" R | 18'-1 1/2" x 42'-4 1/2" R | 18'-1 1/2" x 10'-0" R | 18'-1 1/2" x 19'-6" R | 18'-3 1/2" x 23'-0" R | 18'-1 1/2" x 82'-4" R | 18'-3 1/2" x 15'-6" R |
| G22, G23, G24 & G25 | 18'-3 1/2" x 87'-6" R | 18'-1 1/2" x 27'-0" R | 13'-6" | 18'-3 1/2" x 90'-11 1/2" R | 18'-1 1/2" x 12'-6" R | 18'-2 1/2" x 28'-9" R | 12'-9" | 18'-1 1/2" x 49'-3" R | 18'-1 1/2" x 21'-0" R | 18'-1 1/2" x 8'-9" R | 18'-2 1/2" x 7'-1 1/2" R | 18'-1 1/2" x 8'-9" R | 18'-1 1/2" x 16'-9" R | 18'-3 1/2" x 21'-0" R | 18'-1 1/2" x 85'-4" R | 18'-3 1/2" x 16'-9" R |

CITY OF CHICAGO
DEPARTMENT OF PUBLIC WORKS
BUREAU OF ENGINEERING
SOUTH ROUTE SUPERHIGHWAY
ELEVATED HIGHWAY
W 16TH ST TO W 15TH ST

Sheet S12 of 56

| REVISIONS | |
|-----------|------|
| NAME | DATE |
| | |
| | |
| | |
| | |

ILLINOIS DEPARTMENT OF TRANSPORTATION
F.A.I. 94/90 (DAN RYAN EXPRESSWAY)
FABRICATION CONTRACT
NB DAN RYAN ELEVATED BRIDGE
REPAIR FROM 15TH TO 28TH STREETS
EXISTING PLAN INFORMATION SN 016-1110
SCALE: NTS
DATE: 5/23/2005
DRAWN BY: BDC
CHECKED BY: BLU

FOR INFORMATION ONLY

BOWMAN, BARRETT & ASSOCIATES INC.
CONSULTING ENGINEERS
110 EAST RANDOLPH STREET SUITE 1650 CHICAGO, ILLINOIS 60601
312.581.1100

5/23/2005 9:26:54 AM