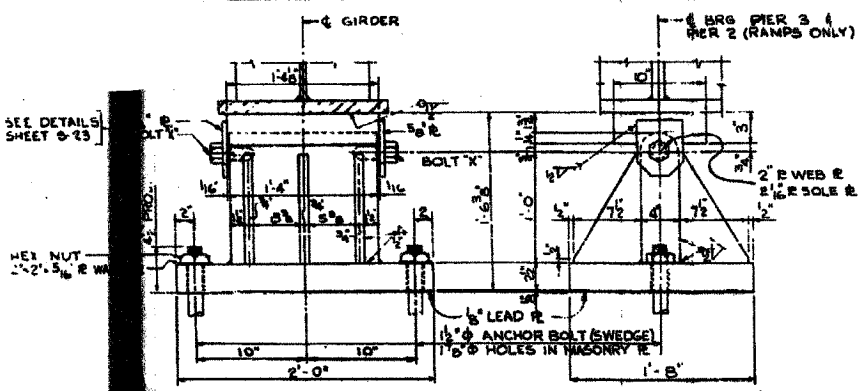


F.A.I.	SECTION	COUNTY	TOTAL SHEETS	SHEET NO.
84/90	2005-008F	COOK	93	80
STA.	TO STA.			
FED. ROAD DIST. NO.	ILLINOIS	FED. AID PROJECT		

62919

MATERIAL - TYPE 'A'

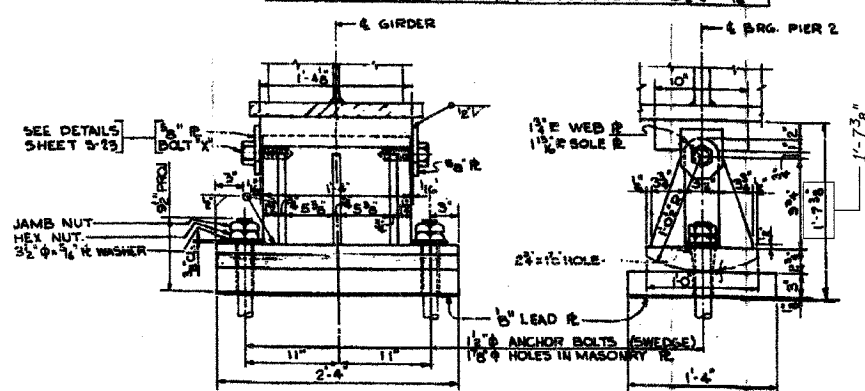
SOLE R	10" x 3" x 1/4"	2 - 5/8" B	5" x 5" x 0.5"
MASONRY R	20" x 2" x 2" O	2 - BOLT 1"	1 1/2" x 1 1/2"
WEB R	1 1/2" x 4" x 1/4"	2 - ANCHOR BOLTS	1 1/2" x 1 1/2"
6" STIFFENER R	7" x 3" x 1/4"	2 - R WASHERS	2" x 2" x 5/16"
6" LEAD R	20" x 2" x 2" O		



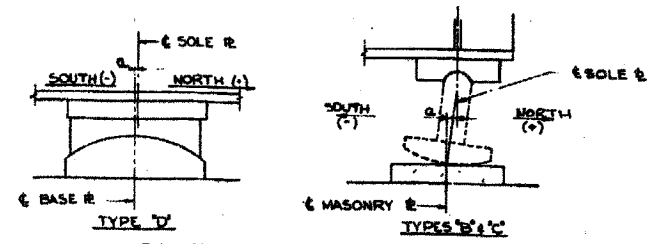
FIXED BRG. TYPE 'A' (32 REQ.)
SCALE: 1/2" = 1'-0"

MATERIAL - TYPE 'B'

SOLE R	10" x 3" x 1/4"	6" LEAD R	1" x 6" x 2" x 4"
MASONRY R	16" x 3" x 2" x 4"	2 - 5/8" B	5" x 5" x 0.5"
WEB R	1 1/2" x 3" x 1/4"	2 - BOLT 1"	1 1/2" x 1 1/2"
ROCKER R	1 1/2" x 2" x 2" O	2 - ANCHOR BOLTS	1 1/2" x 1 1/2"
6" STIFFENER R	2 1/2" x 4" x 1/4"	2 - R WASHERS	2" x 2" x 5/16"



EXPANSION BEARING TYPE 'B' (16 REQ.)
SCALE: 1/2" = 1'-0"



SOLE R SETTING DIAGRAM

TABLE OF SETTINGS (a)

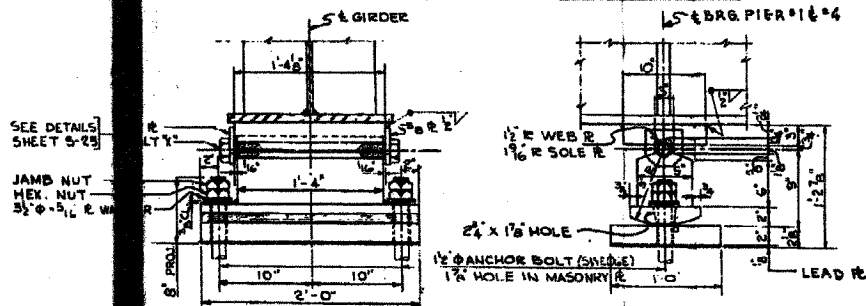
TEMPERATURE	110°	90°	70°	50°	30°	10°
LOCATION OF BEARINGS	ROADWAY					
PIER #1 (NORTH)	C	-1/8"	-3/16"	0	0	-1/8"
PIER #2	B	-3/8"	-7/16"	-3/16"	0	-3/8"
PIER #3 (FIXED)	A	0	0	0	0	0
PIER #4 (SOUTH)	C	+1/8"	+7/16"	+1/4"	0	+1/4"
LOCATION OF BEARINGS	RAMPS					
PIER #1 (NORTH)	C	-1/8"	-3/16"	-3/16"	0	-3/8"
PIER #2 (FIXED)	A	0	0	0	0	0
SUSPENDED SPAN						
SOUTH END (FIXED)	E	0	0	0	0	0
NORTH END	D	+3/8"	+7/16"	+3/16"	0	+3/8"
PIER #3 (FIXED)	A	0	0	0	0	0
PIER #4 (SOUTH)	C	+1/8"	+7/16"	+1/4"	0	+1/4"

SCHEDULE OF BEARINGS

BEARING TYPE	NUMBER REQUIRED	WEIGHT OF STEEL PER BRG. (LBS)	TOTAL STEEL (LBS)
'A'	32	871	27,872
'B'	16	1,070	17,120
'C'	48	646	31,008
'D'	8	703	5,624
'E'	8	772	6,176
	TOTAL		87,800

MATERIAL - TYPE 'C'

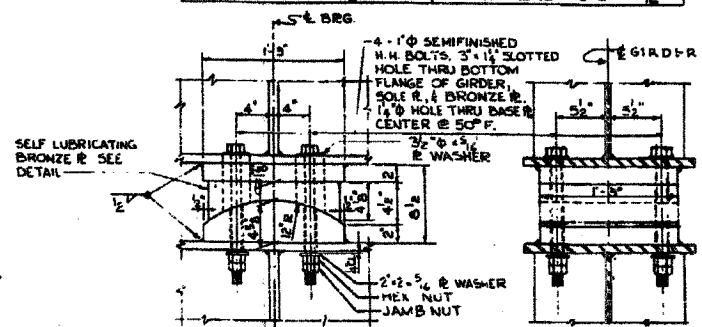
SOLE R	10" x 3" x 1/4"	2 - 5/8" B	5" x 5" x 0.5"
MASONRY R	10" x 2" x 2" O	2 - BOLT 1"	1 1/2" x 1 1/2"
WEB R	6" x 2" x 1/4"	2 - ANCHOR BOLTS	1 1/2" x 1 1/2"
ROCKER R	6" x 2" x 2" O	2 - R WASHERS	2" x 2" x 5/16"
6" LEAD R	12" x 2" x 2" O		



EXPANSION BRG. TYPE 'C' (48 REQ.)
SCALE: 1/2" = 1'-0"

MATERIAL - TYPE 'D'

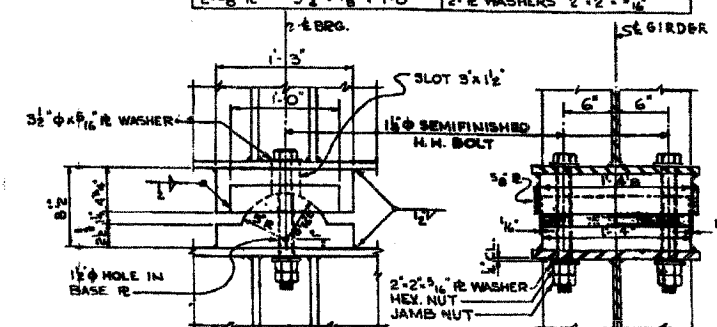
SOLE R	15" x 2" x 1/2"	4 - BOLTS	1" x 1" x 1/2"
BRONZE R	14" x 4" x 1/2"	4 - R WASHERS	3/2" x 3/2" x 5/16"
BASE R	15" x 4" x 1/2"	4 - R WASHERS	2" x 2" x 5/16"



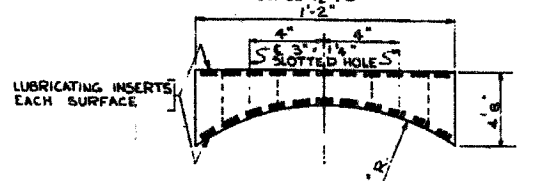
EXPANSION BRG. TYPE 'D' (8 REQ.)
SCALE: 1/2" = 1'-0"

MATERIAL - TYPE 'E'

SOLE R	15" x 4 1/2" x 1/4"	2 - BOLTS	1 1/2" x 1/2"
BASE R	15" x 6" x 1/4"	2 - R WASHERS	3 1/2" x 3 1/2" x 5/16"
2 - 5/8" B	3 1/2" x 3 1/2" x 1/2"	2 - R WASHERS	2" x 2" x 5/16"



FIXED BRG. TYPE 'E' (8 REQ.)
SCALE: 1/2" = 1'-0"



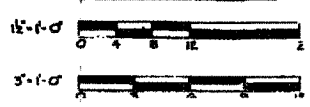
DETAIL OF SELF LUBRICATING BRONZE R
SCALE: 3" = 1'-0"

NOTE: SEE ANCHOR BOLT SETTING DETAIL SHT. 523
 * ALL WELDED PLATES TO BE A-7 STEEL.
 * ROCKER R & WEB R FOR EXPANSION BRG. TYPES 'B' & 'C' CAN BE GRADE 65-35 CARBON STEEL CASTING.

BILL OF MATERIAL

ITEM	UNIT	QUANTITY
STRUCTURAL STEEL	LBS.	87,800

INCLUDED IN "LUB. BRG. SHT. 511"
SCALE OF TRACING



CITY OF CHICAGO
DEPARTMENT OF PUBLIC WORKS
BUREAU OF ENGINEERING
SOUTH ROUTE SUPERHIGHWAY
ELEVATED HIGHWAY

W. 16 TH. ST. TO W. 15 TH. ST.

SECTION 2-2825.3-2H

BEARINGS UNIT I

DE LEUW, CATHAR & COMPANY
 CONSULTING ENGINEERS CHICAGO
 SCALE: AS NOTED DATE: AUGUST, 1961

Sheet S17 of 56

REVISIONS

NAME	DATE

ILLINOIS DEPARTMENT OF TRANSPORTATION
 F.A.I. 94/90 (DAN RYAN EXPRESSWAY)
 FABRICATION CONTRACT
 NB DAN RYAN ELEVATED BRIDGE
 REPAIR FROM 15TH TO 28TH STREETS
 EXISTING PLAN INFORMATION SN 016-1110

SCALE: NTS DRAWN BY: BDC
 DATE: 5/23/2005 CHECKED BY: BLU

FOR INFORMATION ONLY

Designed: H.S.W.
 Drawn: M.M.M.
 Checked: P.J.V.
 In Charge: H.S. WULF
 Approve: L.H. BIAN

BOWMAN, BARRETT & ASSOCIATES INC.
 CONSULTING ENGINEERS
 110 EAST MADISON STREET SUITE 2600 CHICAGO, ILLINOIS 60601
 JOB NO. 440