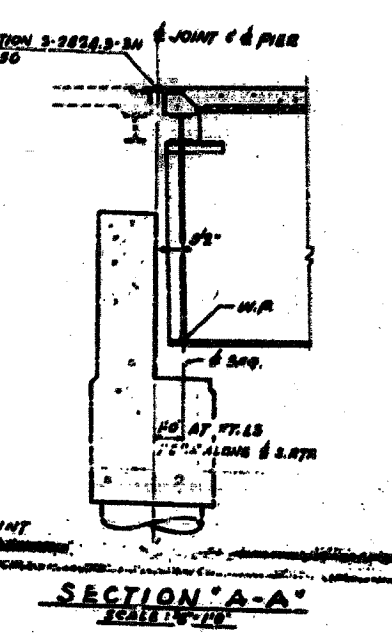
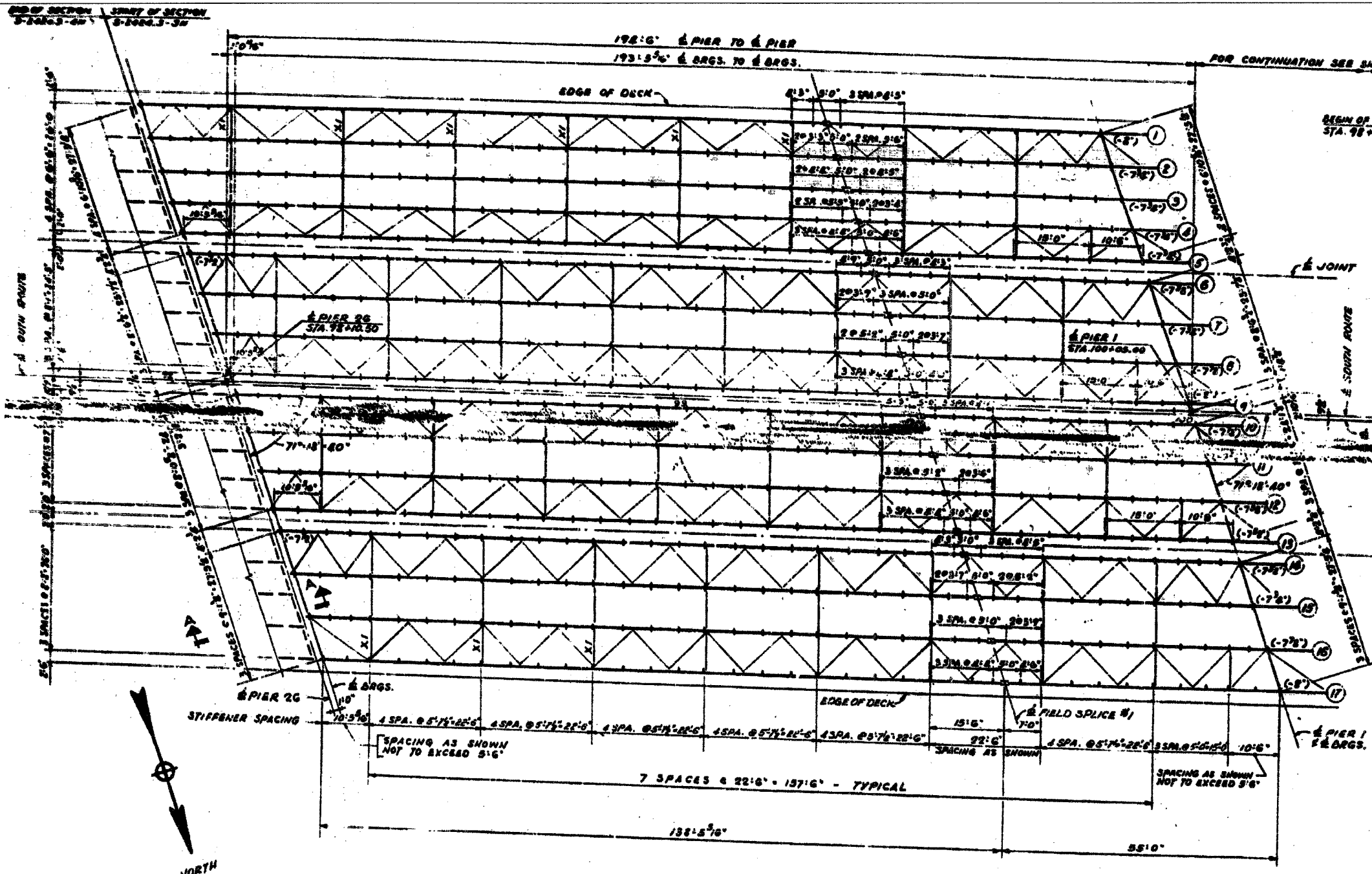


F.A.I.	SECTION	COUNTY	TOTAL SHEETS	SHEET NO.
94/90	2005-008F	COOK	93	87
STA.	TO STA.			
FED. ROAD DIST. NO.	ILLINOIS	FED. AID PROJECT		
62919				



**NOTES FOR FRAMING PLAN**

ALL DIMENSIONS SHOWN ON PLANS ARE HORIZONTAL AND TAKEN ALONG BOTTOM OF WEB FLANGE.

FOR WELDED FLATS NEAR SCHEMAS AND DETAILS, TYPICAL ELEVATION AND HAZEL CONNECTION SPACING SEE SHEET 1A.

FOR BEARING DETAILS AT PIER 26, 1 & 2 AND DETAIL OF FIELD BEAMS SEE SHEET 1B.

FOR BEARING DETAILS AT PIER 1 SEE SHEET 2B.

FOR DEAD LOAD DISTRIBUTION AND CAMBER DIAGRAM SEE SHEET 1A.

ALL INTERMEDIATE CROSS FRAMES ARE TYPICAL AS SHOWN ON SHEETS 17 & 18 EXCEPT CROSS FRAMES MARKED 'X' ON FRAMING PLANS. FOR DETAIL OF CROSS FRAMES MARKED 'X' SEE SHEET 1B.

FOR END CROSS FRAMES AND LATERAL BRACING CONNECTIONS SEE SHEETS 17 & 18.

FOR EXPANSION GUARD AND DETAILS SEE SHEETS 18 THROUGH 21.

CUT WEB FLATES OF BEAMS 9 & 10 FOR SECTION OF BRASS PIPES AS SHOWN ON BEARING DETAILS, SHEETS 2 & 3B. PIPES IN BRACKETS (-7'5") TO BE AT ELEVATION OF TOP OF BRASS WITH REFERENCE TO TOP OF SLAB AT CENTERLINE BRASSING. TOPS OF ALL BEAMS NOT NOTED SHALL BE 7'5" BELOW TOP OF SLAB AT CENTERLINE BRASSING.

**FRAMING PLAN - SPAN 1**  
SCALE 1" = 10 FT.

BEAM	TOP OF FLANGE ELEVATIONS AT G BEAM																
	1	2	3	4	5	6	7	8	9	10	11	12	13	14	15	16	17
DECK PIER 26	59.900	60.000	60.205	60.327	60.410	60.416	60.378	60.280	60.119	60.162	60.206	60.076	60.076	60.099	60.207	60.411	60.760
GIRG. PIER 1	61.172	61.326	61.468	61.570	61.648	61.691	61.571	61.430	61.261	61.306	61.470	61.610	61.679	61.670	61.611	61.447	61.261
GIRG. PIER 2	60.000	61.001	61.162	61.281	61.370	61.370	61.291	61.180	60.781	60.760	61.112	61.232	61.270	61.287	61.178	60.707	60.772
DECK PIER 3	59.601	59.799	59.715	60.000	60.114	60.114	60.000	59.822	59.637	59.637	59.764	59.867	59.877	59.877	59.777	59.577	59.364

**BILL OF MATERIAL**

DESCRIPTION	UNIT	QUANTITY
FURNISHING & ERECTING STRUCTURAL STEEL	LBS	4,242,000

\* INCLUDES WEIGHT OF BEARINGS & EXPANSION GUARDS

FOR INFORMATION ONLY

BOWMAN, BARRETT & ASSOCIATES INC.  
CONSULTING ENGINEERS  
128 EAST MADISON STREET SUITE 2450 CHICAGO, ILLINOIS 60601  
312.467.4400

Sheet 11 of 45

SHEET NO. 11 OF 45 SHEETS DATE: JULY 1994

REVISIONS	
NAME	DATE

ILLINOIS DEPARTMENT OF TRANSPORTATION  
F.A.I. 94/90 (DAN RYAN EXPRESSWAY)  
FABRICATION CONTRACT  
NB DAN RYAN ELEVATED BRIDGE  
REPAIR FROM 15TH TO 28TH STREETS  
EXISTING PLAN INFORMATION SN 016-1116  
SCALE: NTS DRAWN BY: BOC  
DATE: 5/23/2005 CHECKED BY: BLU