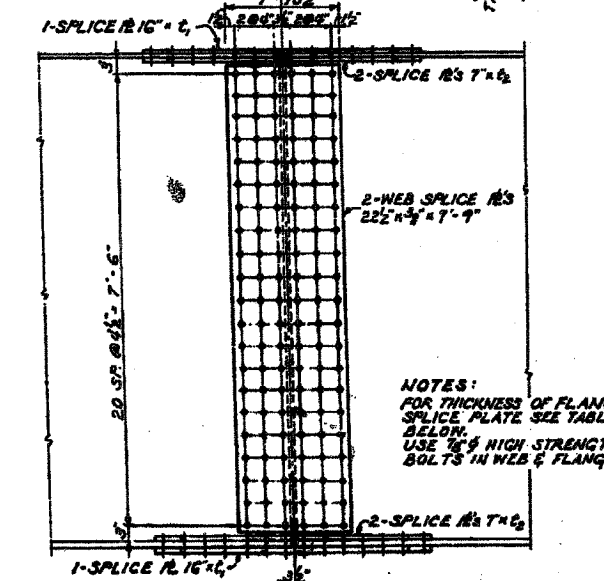
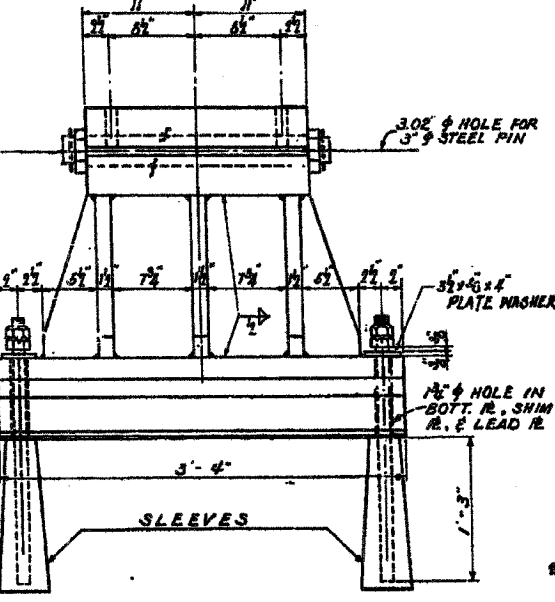
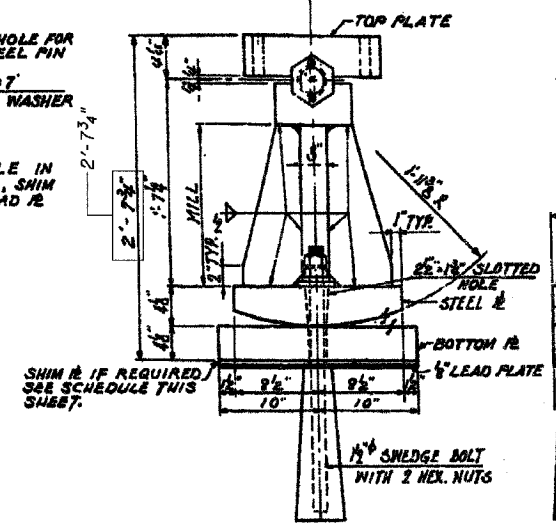
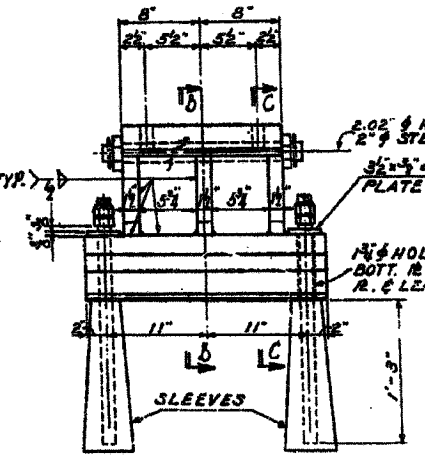
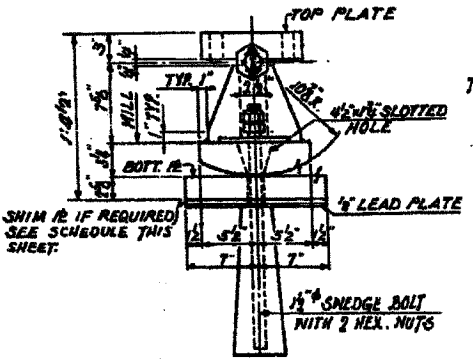
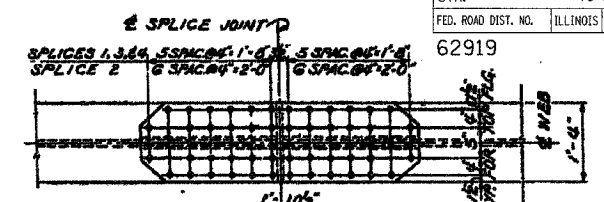
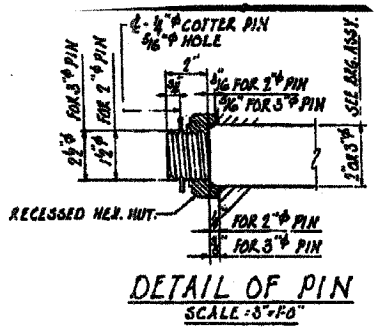
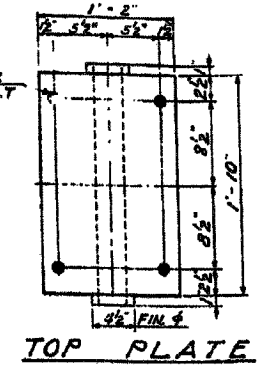
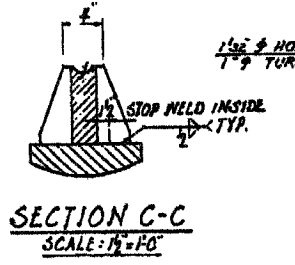
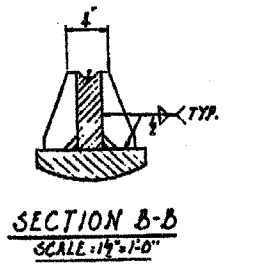
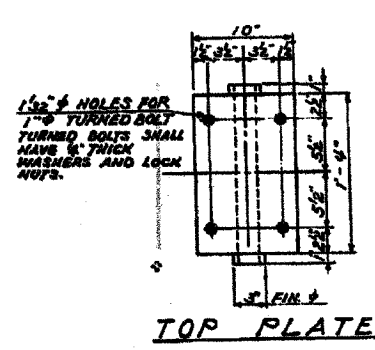


62919

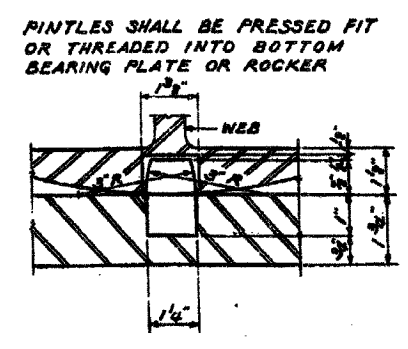
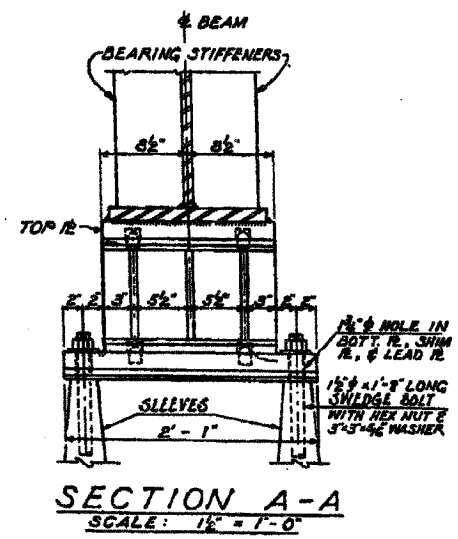
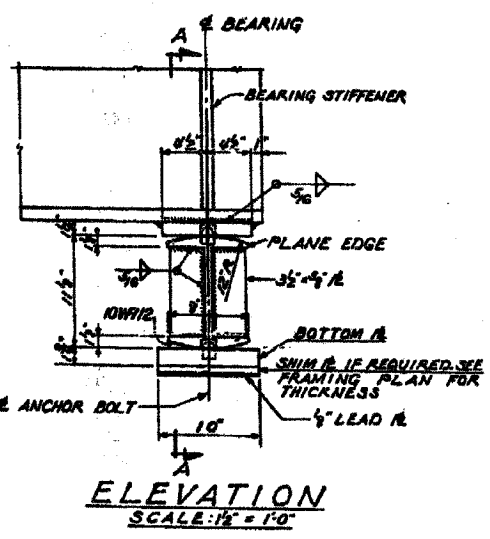


NOTES:
FOR THICKNESS OF FLANGE SPLICE PLATE SEE TABLE BELOW.
USE 1/2 INCH HIGH STRENGTH BOLTS IN WEB & FLANGES.

DETAILS OF EXPANSION BEARING AT PIER 26
SCALE: 1/2 inch = 1 foot

DETAILS OF EXPANSION BEARING AT PIER 1
SCALE: 1/2 inch = 1 foot

DETAIL OF FIELD SPLICE
SCALE: 1/4 inch = 1 foot



BOTTOM PINTLE DETAIL
(TOP PINTLE DETAIL SIMILAR)
SCALE: 1/4 inch = 1 foot

SHIM # SCHEDULE

BEAM PIER	4	6	7	9	12	15
#26	-	-	3/8"	3/8"	-	3/8"
#1	-	3/8"	-	-	-	-
#3	3/8"	-	-	-	3/8"	-

TABLE OF FLANGE SPLICE PLATES

NO. OF GIRDER	LOCATION ON TOP & BOTTOM FLANGES	THICKNESS OF SPLICE PLATE	
		SPLICES 1, 3, & 4	SPLICE 2
1, 9, & 17	t ₁	3/8"	1/2"
	t ₂	3/8"	7/8"
2, 3, 4, & 5	t ₁	3/8"	7/8"
	t ₂	1/2"	1 1/8"
6, 11, 12, 13, & 14	t ₁	3/8"	7/8"
	t ₂	7/8"	1 1/8"
7, 8, 10, 15, & 16	t ₁	3/8"	7/8"
	t ₂	1/2"	3/4"

* FOR LOCATION OF SPLICES SEE FRAMING SHEETS 11, 12 & 13

NOTE!
FOR DETAIL OF FIXED BEARING AT PIER 2 SEE SH. 38.

CITY OF CHICAGO
DEPARTMENT OF PUBLIC WORKS
BUREAU OF ENGINEERING
SOUTH ROUTE SUPERHIGHWAY
ELEVATED HIGHWAY
STEWART AVE. TO CANAL ST.
SECTION 9-2484.3-3H
BRACING & SPLICE DETAILS

REVISIONS

NAME	DATE

ILLINOIS DEPARTMENT OF TRANSPORTATION
F.A.I. 94/90 (DAN RYAN EXPRESSWAY)
FABRICATION CONTRACT
NB DAN RYAN ELEVATED BRIDGE
REPAIR FROM 15TH TO 28TH STREETS
EXISTING PLAN INFORMATION SN 016-1116
SCALE: NTS
DATE: 5/23/2005
DRAWN BY: BDC
CHECKED BY: BLU

Sheet 15 of 45
FOR INFORMATION ONLY

5/23/2005 9:27:31 AM