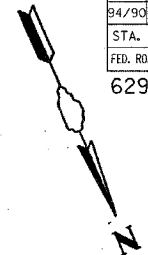
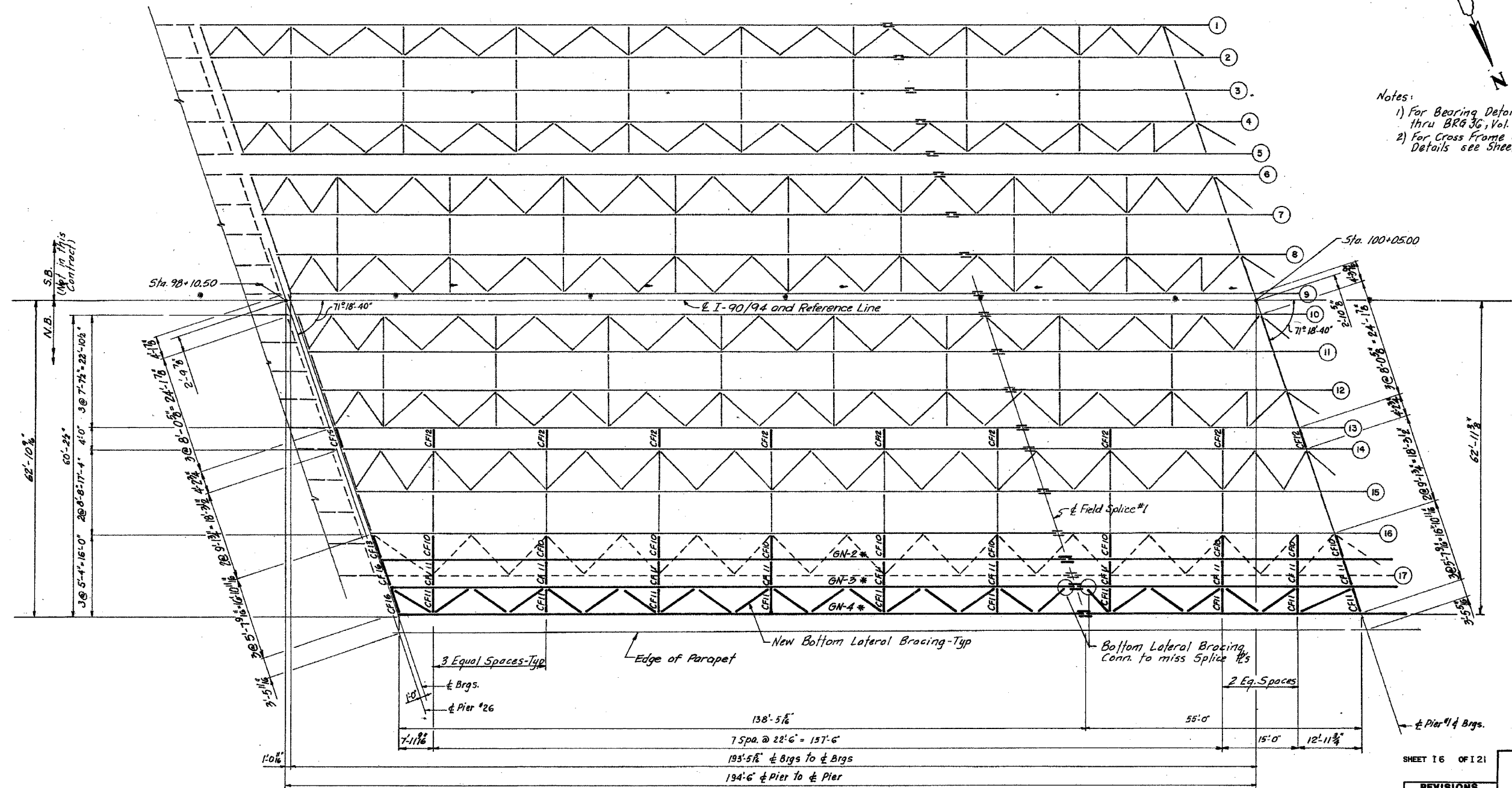


F.A.I.	SECTION	COUNTY	TOTAL SHEETS	SHEET NO.
94/90	2005-008F	COOK	93	90
STA.	TO STA.			
FED. ROAD DIST. NO.	ILLINOIS	FED. AID PROJECT		
62919				



Notes:  
 1) For Bearing Details see Sheets BRG 32 thru BRG 36, Vol. #3  
 2) For Cross Frame and Bottom Lateral Bracing Details see Sheet I 11.



ALL NEW MATERIALS SHOWN ON THIS SHEET ARE FURNISHED UNDER A SEPARATE STEEL FABRICATION CONTRACT (SECTION 1988-003F), UNLESS NOTED OTHERWISE.

**PLAN - SPAN - 1 (N.B.)**

**LEGEND**  
 --- To be removed (N.B. only)  
 \* New Plate girder (for size & length See sheet I 9)

REVISIONS	
Name	Date

STATE OF ILLINOIS  
 DEPARTMENT OF TRANSPORTATION  
 F.A.I. ROUTE 90/94 (DAN RYAN EXPRESSWAY)  
 SECTION 085-077B-COOK COUNTY  
 N.B. MAINLINE RECONSTRUCTION  
 STRUCTURE 016-116  
 FRAMING PLAN SPAN 1  
 Scale: NONE  
 Date: AUG. 1988  
 Drawn By: AVP  
 Checked By: AW  
 ENVIRONMENTAL ENGINEERS INC.  
 Chicago, Illinois

REVISIONS	NAME	DATE

ILLINOIS DEPARTMENT OF TRANSPORTATION  
 F.A.I. 94/90 (DAN RYAN EXPRESSWAY)  
 FABRICATION CONTRACT  
 NB DAN RYAN ELEVATED BRIDGE  
 REPAIR FROM 15TH TO 28TH STREETS  
 EXISTING PLAN INFORMATION SN 016-116  
 SCALE: NTS  
 DATE: 5/23/2005  
 DRAWN BY: BDC  
 CHECKED BY: BLU

FOR INFORMATION ONLY

BOWMAN, BARRETT & ASSOCIATES INC.  
 CONSULTING ENGINEERS  
 130 EAST MADISON STREET SUITE 1400 CHICAGO, ILLINOIS 60601  
 JOB NO. 644