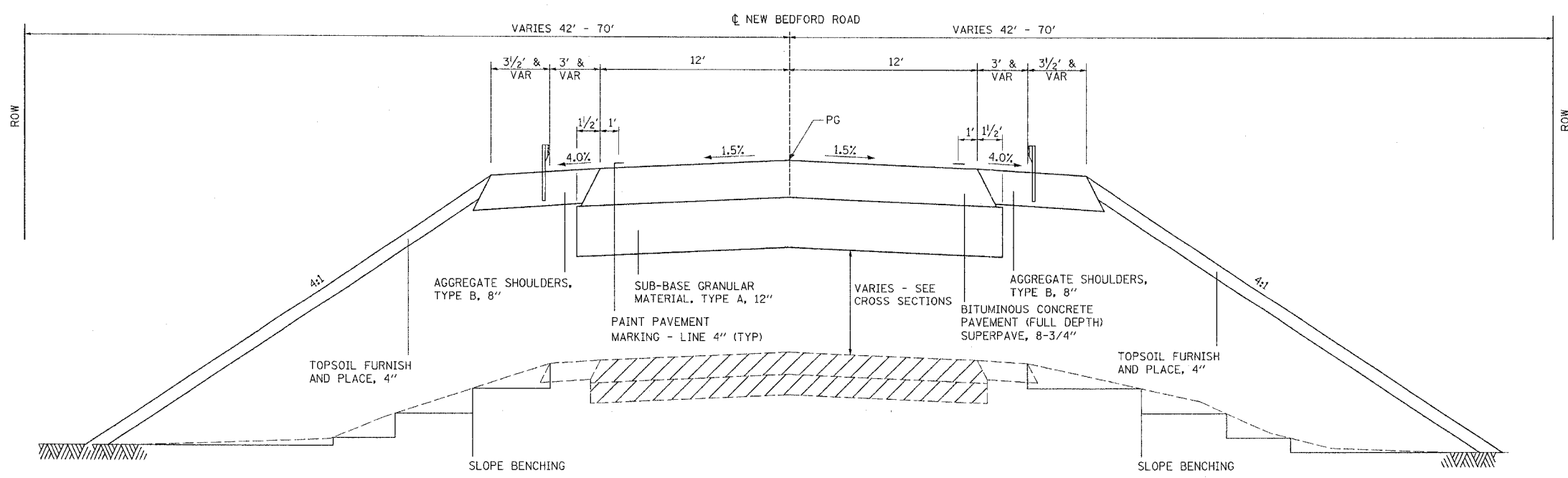


64423

SBI	SECTION	COUNTY	TOTAL SHEETS	SHEET NO.
88	103C-BR	BUREAU	51	4
STA. 19+00		TO STA. 39+00		
EXISTING CONDITIONS:				



PROPOSED TYPICAL ROADWAY SECTION

STA 26+54.09 RT TO STA 28+12.84 RT
 STA 26+79.09 LT TO STA 28+12.84 LT
 STA 28+12.84 TO STA 28+42.84 - BRIDGE APPROACH PAVEMENT. SEE STANDARD FOR DETAILS.
 STA 28+42.84 TO STA 30+07.84 - BRIDGE OMISSION
 STA 30+07.84 TO STA 30+37.84 - BRIDGE APPROACH PAVEMENT. SEE STANDARD FOR DETAILS.
 STA 30+37.84 RT TO STA 31+71.94 RT
 STA 30+37.84 LT TO STA 31+97.09 LT

NOTE:

1. BITUMINOUS CONCRETE PAVEMENT (FULL DEPTH), SUPERPAVE 8-3/4" CONSISTS OF BITUMINOUS CONCRETE SURFACE COURSE, SUPERPAVE, MIX "C", N50 2" AND BITUMINOUS CONCRETE BINDER COURSE, SUPERPAVE, IL-19.0, N50 6-3/4"
2. EXISTING SLOPES SHALL BE BENCHED AS SHOWN. DEEP BENCHING IS REQUIRED TO INSURE THE REMOVAL OF UNSTABLE SLOPE MATERIAL FROM THE SLOPE FAILURE PLANE. EXCAVATED MATERIALS AS A RESULT OF BENCHING SHALL BE USED IN EMBANKMENT. THE COST OF BENCHING SHALL NOT BE PAID FOR SEPARATELY, BUT SHALL BE INCLUDED IN THE COST OF THE VARIOUS EARTHWORK PAY ITEMS.
3. SEE PLAN AND PROFILE SHEETS FOR GUARDRAIL LOCATIONS.

APPLICATION RATES

AGGREGATE SHOULDERS, TYPE B	2.05 TONS/CU YD
AGGREGATE SURFACE COURSE, TYPE B	2.05 TONS/CU YD
SUB-BASE GRANULAR MATERIAL, TYPE A	2.05 TONS/CU YD
BITUMINOUS CONCRETE BINDER COURSE	115 LBS/SQ YD IN
BITUMINOUS CONCRETE SURFACE COURSE	112 LBS/SQ YD IN
INCIDENTAL BITUMINOUS SURFACING	112 LBS/SQ YD IN

	PAVEMENT REMOVAL -	STA 19+00.00 TO 22+50.00
		STA 28+30.00 TO 28+66.55
		STA 29+84.10 TO 30+20.00
		STA 35+50.00 TO 39+00.00
	PAVEMENT BREAKING -	STA 22+50.00 TO 28+30.00
		STA 30+20.00 TO 35+50.00

REVISIONS	
NAME	DATE

ILLINOIS DEPARTMENT OF TRANSPORTATION
 SBI 88 (NEW BEDFORD ROAD)
 SECTION 103C-BR
 BUREAU COUNTY

TYPICAL SECTIONS

DRAWN BY: HLC

PLAN	DATE
BY	
DESIGNED	
CHECKED	
IN CHARGE	
NOTE BOOK NO.	
PAGE FILE NAME	

8/12/2004
 DATE-TIME
 DDON-SPEC
 REF.