

64423

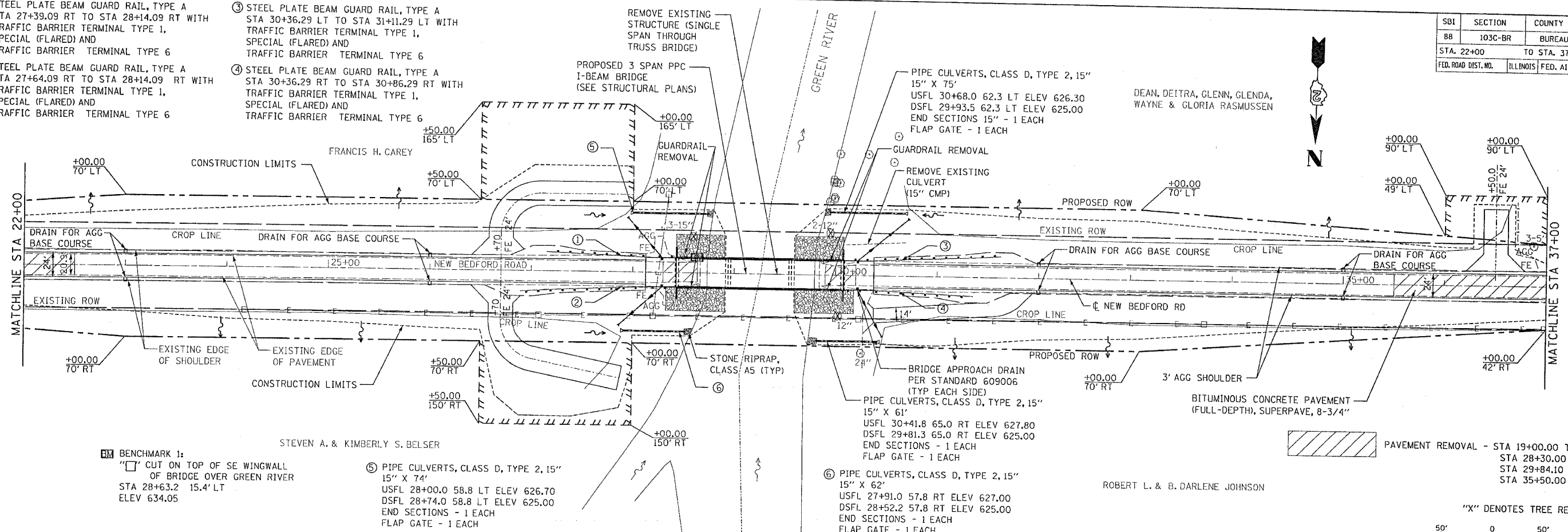
SBI	SECTION	COUNTY	TOTAL SHEET NO.
88	103C-BR	BUREAU	51
STA. 22+00		TO STA. 37+00	
FED. ROAD DIST. NO.		ILLINOIS	FED. AID PROJECT



DEAN, DEITRA, GLENN, GLENDA,
WAYNE & GLORIA RASMUSSEN

ROBERT L. & B. DARLENE JOHNSON

- ① STEEL PLATE BEAM GUARD RAIL, TYPE A
STA 27+39.09 RT TO STA 28+14.09 RT WITH
TRAFFIC BARRIER TERMINAL TYPE 1,
SPECIAL (FLARED) AND
TRAFFIC BARRIER TERMINAL TYPE 6
- ② STEEL PLATE BEAM GUARD RAIL, TYPE A
STA 27+64.09 RT TO STA 28+14.09 RT WITH
TRAFFIC BARRIER TERMINAL TYPE 1,
SPECIAL (FLARED) AND
TRAFFIC BARRIER TERMINAL TYPE 6
- ③ STEEL PLATE BEAM GUARD RAIL, TYPE A
STA 30+36.29 LT TO STA 31+11.29 LT WITH
TRAFFIC BARRIER TERMINAL TYPE 1,
SPECIAL (FLARED) AND
TRAFFIC BARRIER TERMINAL TYPE 6
- ④ STEEL PLATE BEAM GUARD RAIL, TYPE A
STA 30+36.29 RT TO STA 30+86.29 RT WITH
TRAFFIC BARRIER TERMINAL TYPE 1,
SPECIAL (FLARED) AND
TRAFFIC BARRIER TERMINAL TYPE 6



BENCHMARK 1:
"C" CUT ON TOP OF SE WINGWALL
OF BRIDGE OVER GREEN RIVER
STA 28+63.2 15.4' LT
ELEV 634.05

⑤ PIPE CULVERTS, CLASS D, TYPE 2, 15" X 74'
USFL 28+00.0 58.8 LT ELEV 626.70
DSFL 28+74.0 58.8 LT ELEV 625.00
END SECTIONS - 1 EACH
FLAP GATE - 1 EACH

PLAN	DATE
NO.	
BY	
DATE	
BY	
DATE	
BY	
DATE	

PROFILE	DATE
NO.	
BY	
DATE	
BY	
DATE	
BY	
DATE	

