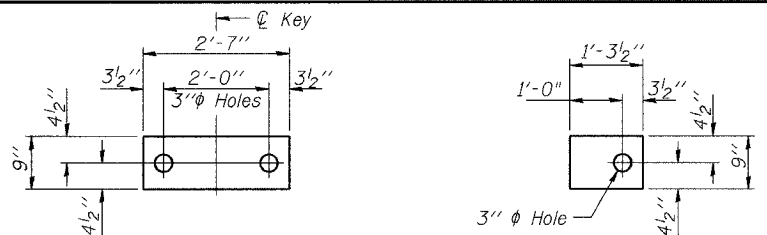


STATE OF ILLINOIS
DEPARTMENT OF TRANSPORTATION

ROUTE NO.	SECTION	COUNTY	SHEETS	SHEET NO.
F.A.P. 301	*	Stephenson	X	5 SHEETS
FED. ROAD DIST. NO. 7	ILLINOIS	FED. AID PROJECT		

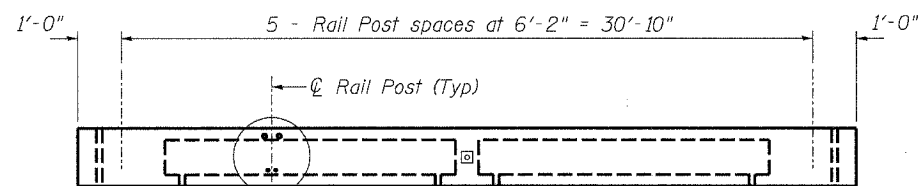
* Section 22 BR-1 Contract #64B04



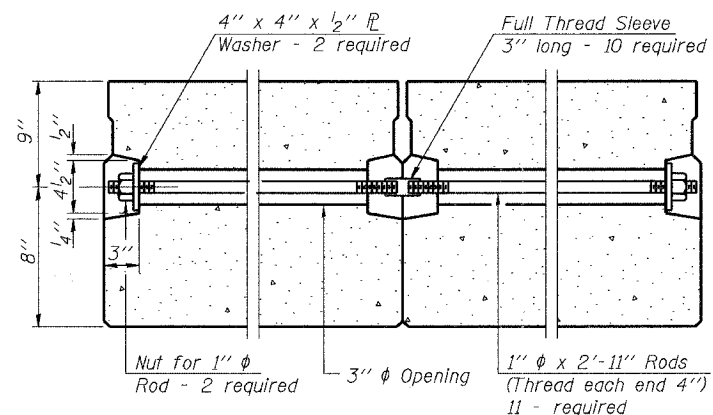
FABRIC BEARING PAD
(Interior)

FABRIC BEARING PAD
(Exterior)

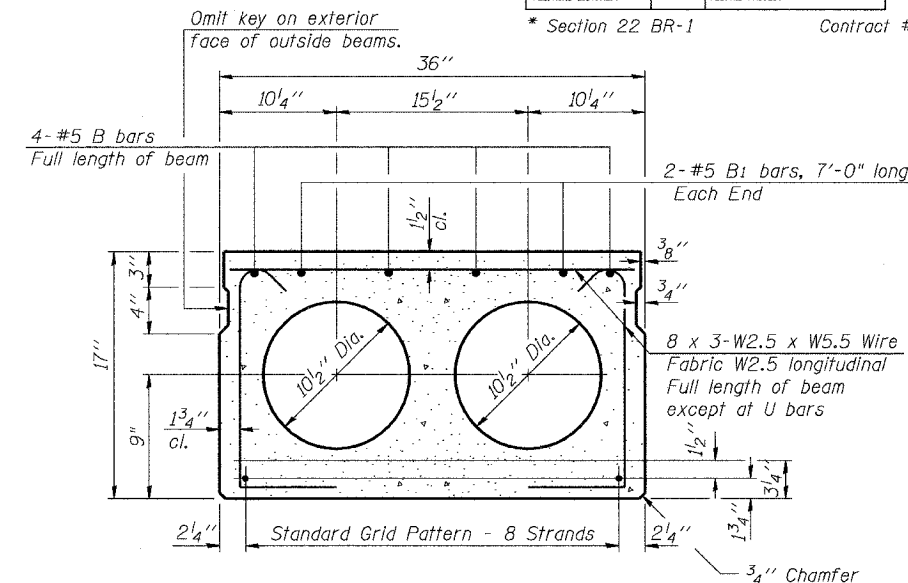
FIXED



OUTSIDE BEAM ELEVATION

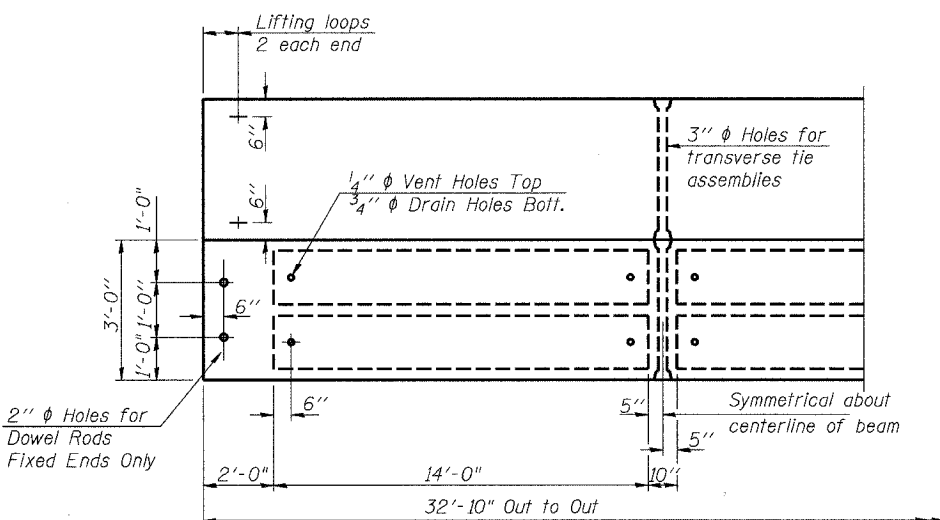


TYPICAL TRANSVERSE TIE ASSEMBLY

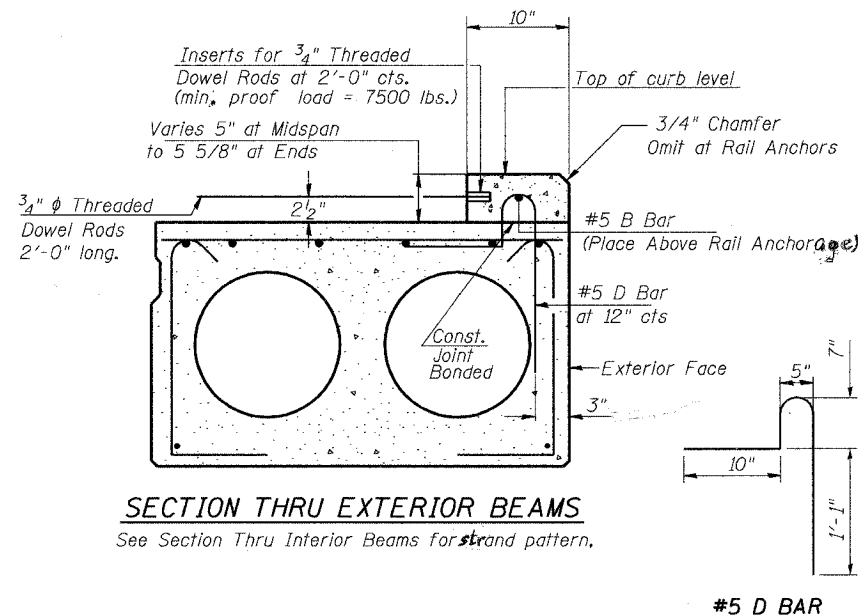


TYPICAL SECTION

9-1/2" ϕ Strands, Each Strand Stressed to 30,900 Lbs. Note:
5-Strands 1 3/4" up, 4-Strands 3/4" up
Place strands symmetrically about ϕ of beam.

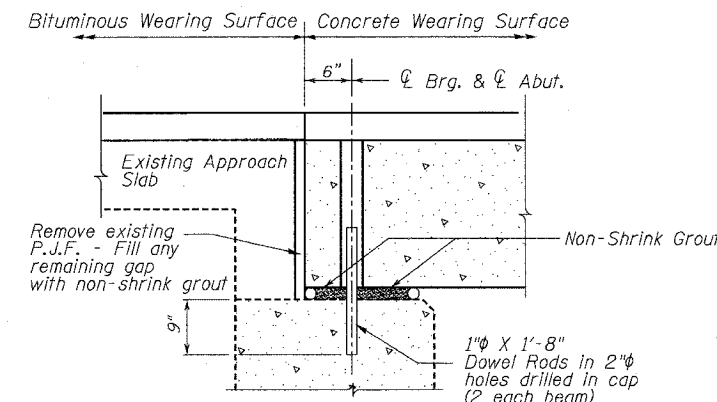


PLAN



SECTION THRU EXTERIOR BEAMS

See Section Thru Interior Beams for strand pattern.



SECTION THRU ABUTMENTS

BILL OF MATERIAL

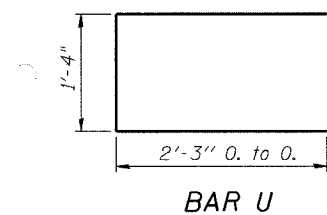
Bar	No./Bm	Size	Length	Shape
B	4	#5	32'-6"	—
B	1	#5	32'-6"	—
B ₁	4	#5	7'-0"	—
D	33	#5	3'-4"	-1
U	12	#4	5'-10"	□
Precast Prestressed Conc. Deck Bms.			Sq. Ft.	1084

* At exterior beams only

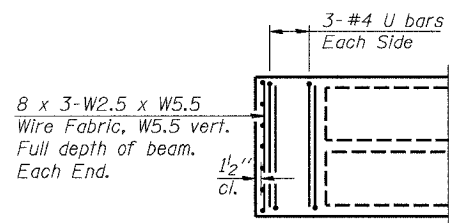
NOTES

Prestressing steel shall be uncoated high strength, low relaxation 7-wire strand, Grade 270. The nominal diameter shall be 1/2" and the nominal cross-sectional area shall be 0.153 sq. in. Lifting loops shall be 2 - 1/2" Dia.-270 ksi strands, as shown. The 1" Dia. rods in the transverse tie assembly shall be tightened to a snug fit and the threads set. Pockets that receive transverse tie bar on outside shall be filled with grout after transverse tie assembly is in place. Non prestressing steel shall conform to AASHTO M-31, or M-322 Grade 60. The bearing seat surfaces shall be adjusted by shimming to assure firm and even bearing. Two 1/8" fabric adjusting shims of the dimensions of the Exterior Bearing Pad shall be provided for each bearing. Keyway surfaces shall be cleaned to remove form oil or other bond breaking material prior to shipment of the beams. Cleaning shall be done by sandblasting the keyway areas between top of the beam and the bottom edge of the key. Corrosion Inhibitor, as covered in the Special Provisions, shall be used in the concrete for precast prestressed concrete deck beams. Required Release Strength, f'ci, shall be 4000 p.s.i. Bridge rail inserts shall be cast into the precast beams and curbs. Curbs shall be cast by the precast prestressed concrete fabricator after the strands have been released and prior to shipping the beams. The concrete used in the curb shall meet the requirements specified for the beams. The curbs including all concrete and reinforcement will not be paid for separately but included with Precast Prestressed Concrete Deck Beams. The curb inserts and threaded dowel rods may be either epoxy coated or galvanized and the cost shall be considered included with Precast Prestressed Concrete Deck Beams. The exposed strands at each deck beam end shall be given two coats of zinc dust spray or paint according to the manufacturer's specifications and meeting the requirements of ASTM A 780. Cost Included with Precast Prestressed Concrete Deck Beams.

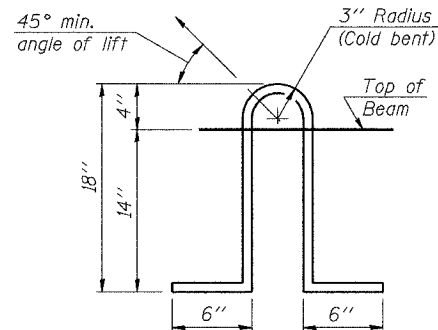
SUPERSTRUCTURE DETAILS
F.A.P. 301 (U.S. 20)
OVER YELLOW CREEK
SECTION 22BR-1
STEPHENSON COUNTY
S.N. 089-0002



BAR U



END PLAN



LIFTING LOOP DETAIL

DESIGNED	SB
CHECKED	RB
DRAWN	DB, BS
CHECKED	SB