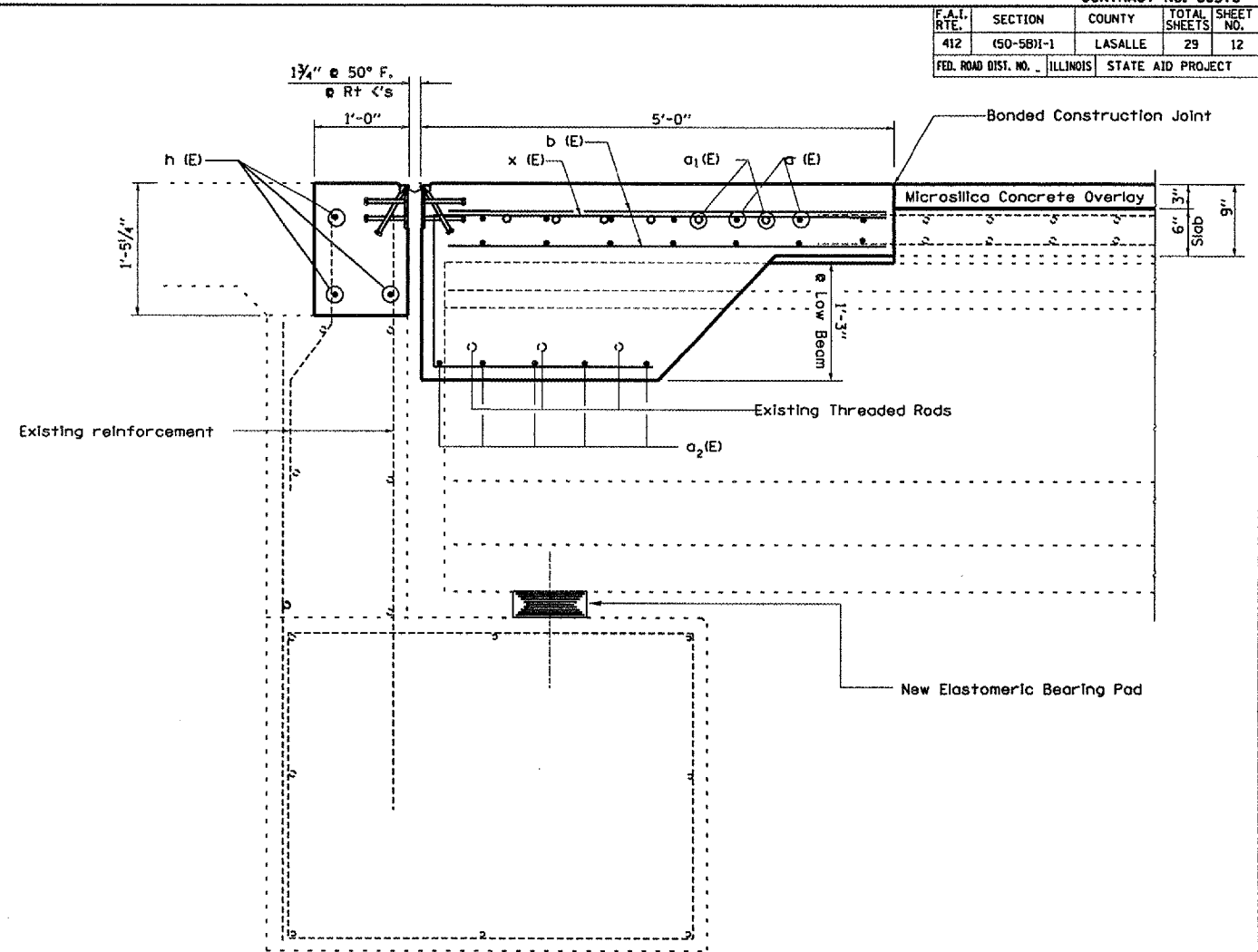
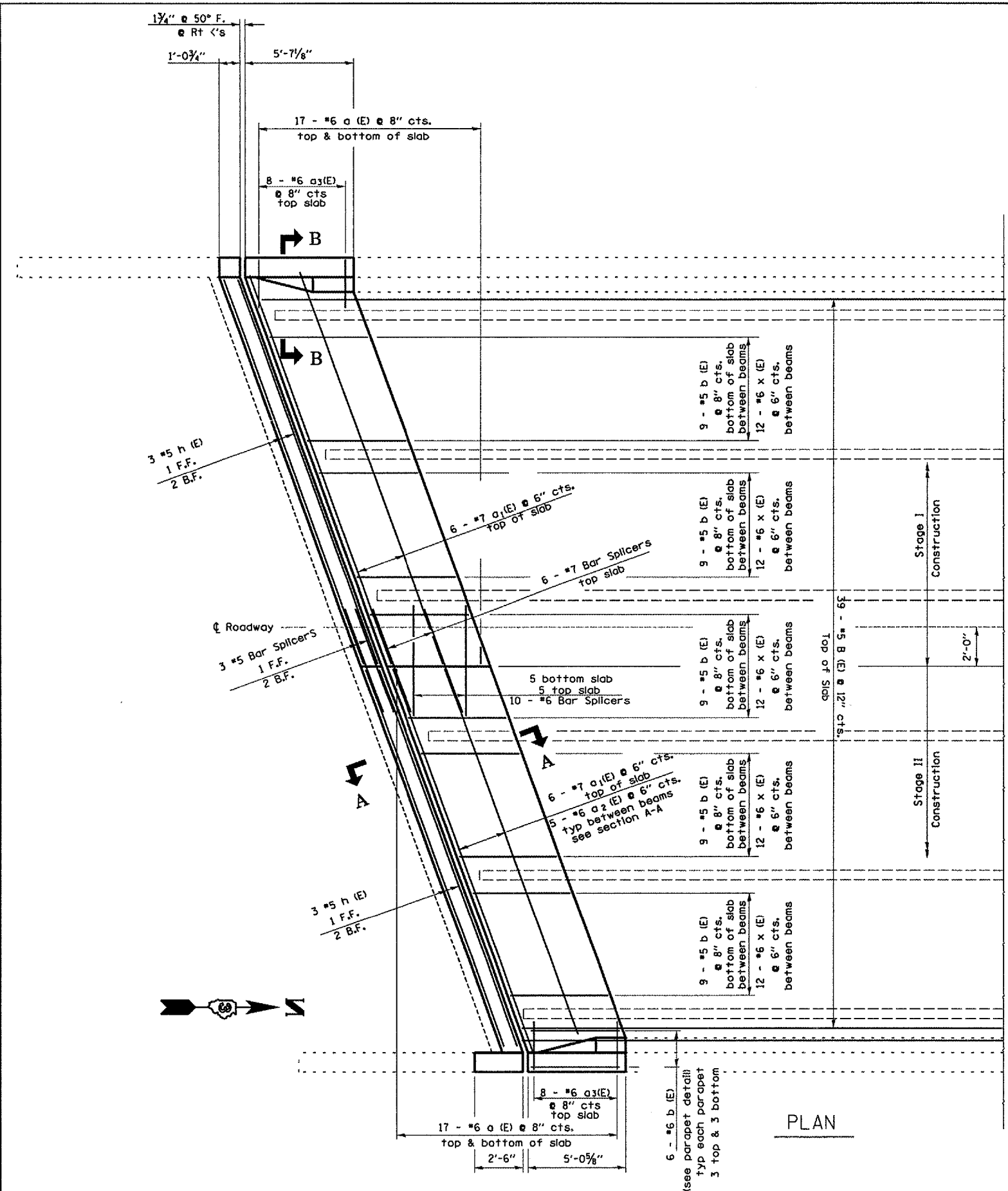


F.A.I. RTE.	SECTION	COUNTY	TOTAL SHEETS	SHEET NO.
412	(50-5B)I-1	LASALLE	29	12
FED. ROAD DIST. NO.		ILLINOIS STATE AID PROJECT		



**SUPERSTRUCTURE
BILL OF MATERIAL**

Bar	No.	Size	Length	Shape
a(E)	34	#6	13'-6"	—
a ₁ (E)	12	#7	22'-0"	—
a ₂ (E)	25	#6	5'-11"	—
a ₃ (E)	16	#6	4'-0"	—
b(E)	96	#5	5'-0"	—
d(E)	12	#5	3'-0"	—
d ₁ (E)	12	#5	3'-1"	—
d ₂ (E)	12	#4	3'-0"	—
d ₃ (E)	12	#4	4'-9"	—
e(E)	6	#4	4'-9"	—
e ₁ (E)	2	#5	4'-9"	—
e ₂ (E)	6	#4	5'-3"	—
e ₃ (E)	2	#5	5'-3"	—
h(E)	6	#5	20'-11"	—
v(E)	4	#6	3'-8"	—
x(E)	60	#6	8'-6"	—
Reinforcement Bars, Epoxy Coated		Pound	3166	
Concrete Superstructure		Cu. Yds.	15.5	

Reinforcement bars designated (E) shall be epoxy coated.

**SECTION A-A
@ Rt <'s**

REVISIONS	DATE
NAME	DATE

ILLINOIS DEPARTMENT OF TRANSPORTATION
RECONSTRUCTION - SOUTH ABUT. DECK DETAILS
S.N. 050-0174
F.A.I. 412 NORTHBOUND
OVER C. & N.W. RAILROAD
SECTION (50-5B)I-1
STA. 1216 + 43.45
DATE 04/24/2005
DRAWN BY RW
CHECKED BY

MARCH 30, 2005
C:\PROJECTS\CMA IN06\CM303\DETAILS.DGN