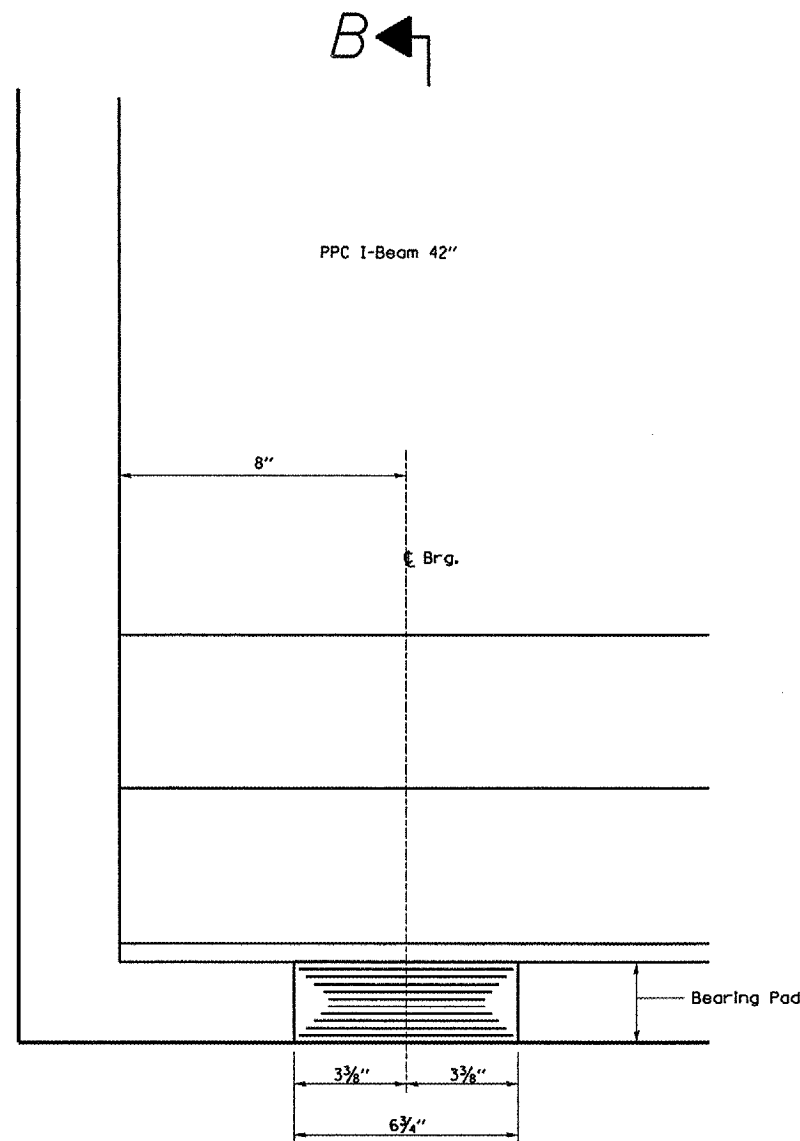
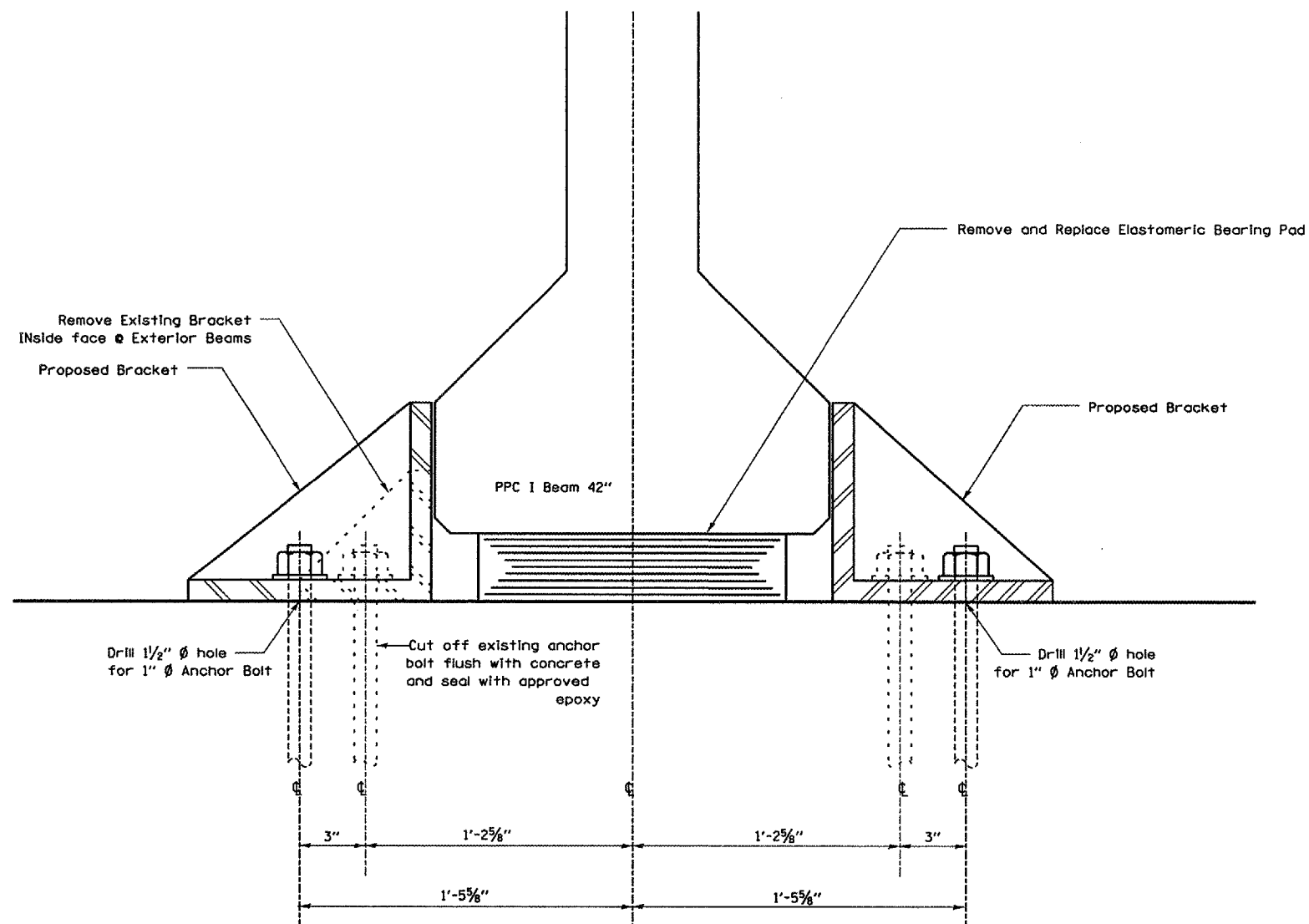


F.A.I. RTE.	SECTION	COUNTY	TOTAL SHEETS	SHEET NO.
412	(50-5B)I-1	LASALLE	29	19
FED. ROAD DIST. NO. _		ILLINOIS	STATE AID PROJECT	



ELEVATION AT ABUT.



SECTION B-B

Reaction for Bearing Replacement

- R DL = 37.5 kips
- R SDL = 7.3 kips
- R LL = 38.8 kips
- R Imp = 10.1 kips

Min Jack size: $1.5 \cdot (R DL + R SDL + 1/2(R LL + R Imp)) / 2$ in Tons

NOTE: The minimum Jack size assumes no traffic over bearings being replaced plus a 50% safety factor for the Jack.

REVISIONS	
NAME	DATE

ILLINOIS DEPARTMENT OF TRANSPORTATION
BEARING REPLACEMENT DETAILS
 S.N. 050-0174
 F.A.I. 412 NORTHBOUND
 OVER C. & N.W. RAILROAD
 SECTION (50-5B)I-1
 STA. 1216+43.45
 DATE 04/24/2005
 DRAWN BY RW
 CHECKED BY

MARCH 30, 2005
 C:\PROJECTS\CMA\IN06\CM303\DETAILS.DGN