

F.A.S. RTE.	SECTION	COUNTY	TOTAL SHEETS	SHEET NO.
1678	6 MFT. Q	EDGAR	29	1

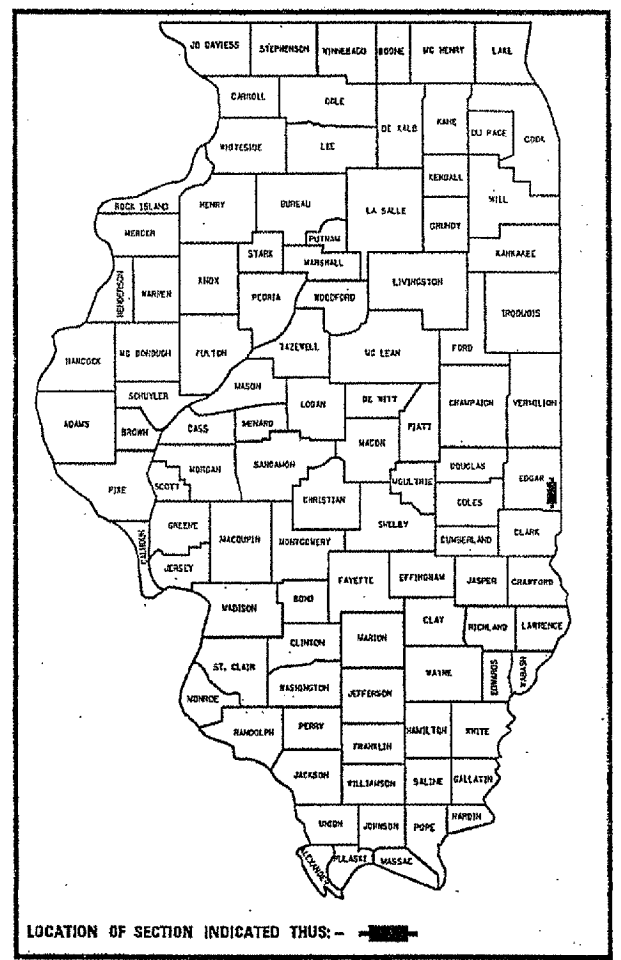
D-95-015-05

STATE OF ILLINOIS  
DEPARTMENT OF TRANSPORTATION  
DIVISION OF HIGHWAYS

**PROPOSED  
HIGHWAY PLANS**

F.A.S. ROUTE 1678 (SCOTTLAND ROAD)  
SECTION 6 MFT, Q  
EDGAR COUNTY  
SEAL COAT 2 MILES NORTH OF SCOTTLAND TO U.S. 36  
C-95-016-05

FOR INDEX OF SHEETS, SEE SHEET NO. 2  
FOR SUMMARY OF QUANTITIES, SEE SHEET NO. 4



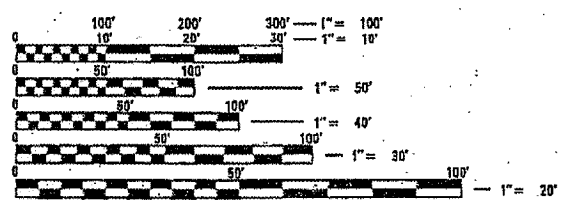
(217) 465-4181

PROJECT ENGINEER: TIM BRANDENBURG

DESIGNER: CAREN ELLEDGE

**CURRENT ADT:**  
F.A.S. 1678 = 350 (2003)

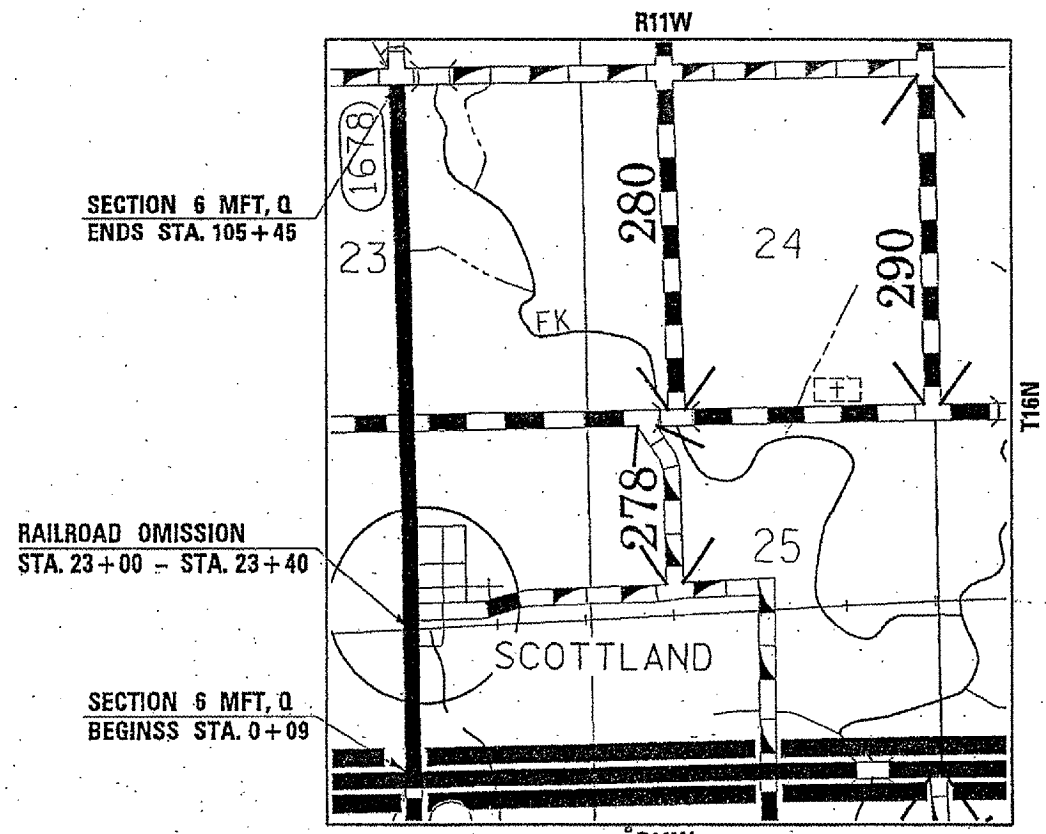
**DESIGN DESIGNATION**  
MAJOR COLLECTOR



FULL SIZE PLANS HAVE BEEN PREPARED USING STANDARD ENGINEERING SCALES. REDUCED SIZED PLANS WILL NOT CONFORM TO STANDARD SCALES. IN MAKING MEASUREMENTS ON REDUCED PLANS, THE ABOVE SCALES MAY BE USED.

J.U.L.I.E.  
JOINT UTILITY LOCATION INFORMATION FOR EXCAVATION  
1-800-892-0123

CONTRACT NO. 70467



STATE OF ILLINOIS  
DEPARTMENT OF TRANSPORTATION  
DIVISION OF HIGHWAYS

SUBMITTED 3/24 2005

*Joseph S. Lowe*  
DEPUTY DIRECTOR OF HIGHWAYS, REGION ENGINEER

May 13 2005  
*Mike Hine*  
ENGINEER OF DESIGN AND ENVIRONMENT

May 13 2005  
*Victor Modere*  
DIRECTOR OF HIGHWAYS, CHIEF ENGINEER

**PRINTED BY THE AUTHORITY  
OF THE STATE OF ILLINOIS**

TOTAL LENGTH OF SECTION & PROJECT = 10,536 FEET = 1.995 MILES  
NET LENGTH OF SECTION & PROJECT = 10,476 FEET = 1.984 MILES