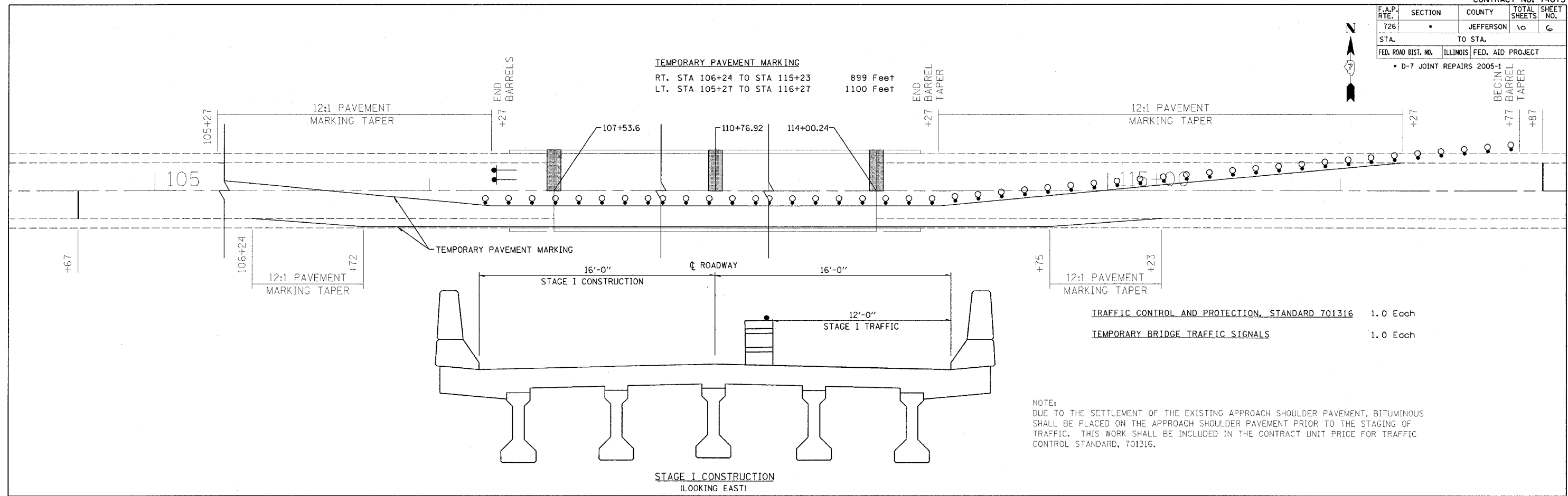


F.A.P. RTE.	SECTION	COUNTY	TOTAL SHEETS	SHEET NO.
726		JEFFERSON	10	6
STA.	TO STA.			
FED. ROAD DIST. NO.	ILLINOIS	FED. AID PROJECT		

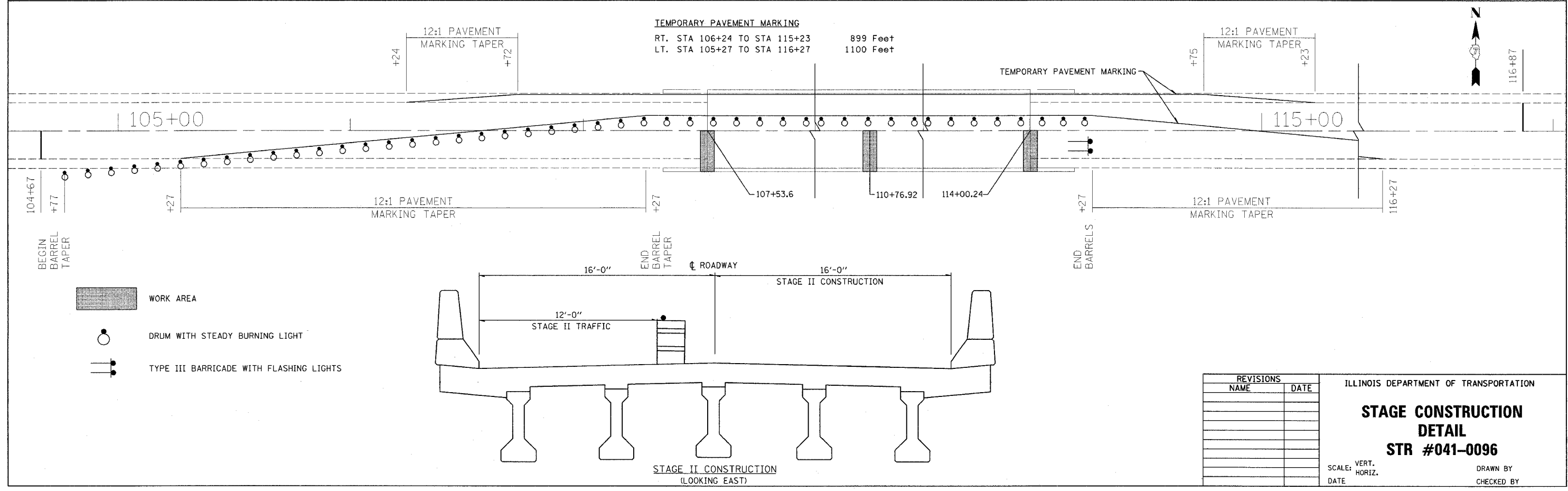
D-7 JOINT REPAIRS 2005-1

steffernmk  
 3/29/2005  
 c:\projects\74073d\05404pa.dgn  
**STAGE**



- TRAFFIC CONTROL AND PROTECTION, STANDARD 701316 1.0 Each
- TEMPORARY BRIDGE TRAFFIC SIGNALS 1.0 Each

NOTE:  
 DUE TO THE SETTLEMENT OF THE EXISTING APPROACH SHOULDER PAVEMENT, BITUMINOUS SHALL BE PLACED ON THE APPROACH SHOULDER PAVEMENT PRIOR TO THE STAGING OF TRAFFIC. THIS WORK SHALL BE INCLUDED IN THE CONTRACT UNIT PRICE FOR TRAFFIC CONTROL STANDARD, 701316.



- WORK AREA
- DRUM WITH STEADY BURNING LIGHT
- TYPE III BARRICADE WITH FLASHING LIGHTS

REVISIONS	
NAME	DATE

ILLINOIS DEPARTMENT OF TRANSPORTATION

**STAGE CONSTRUCTION  
 DETAIL  
 STR #041-0096**

SCALE: VERT. DATE  
 HORIZ. DRAWN BY  
 CHECKED BY