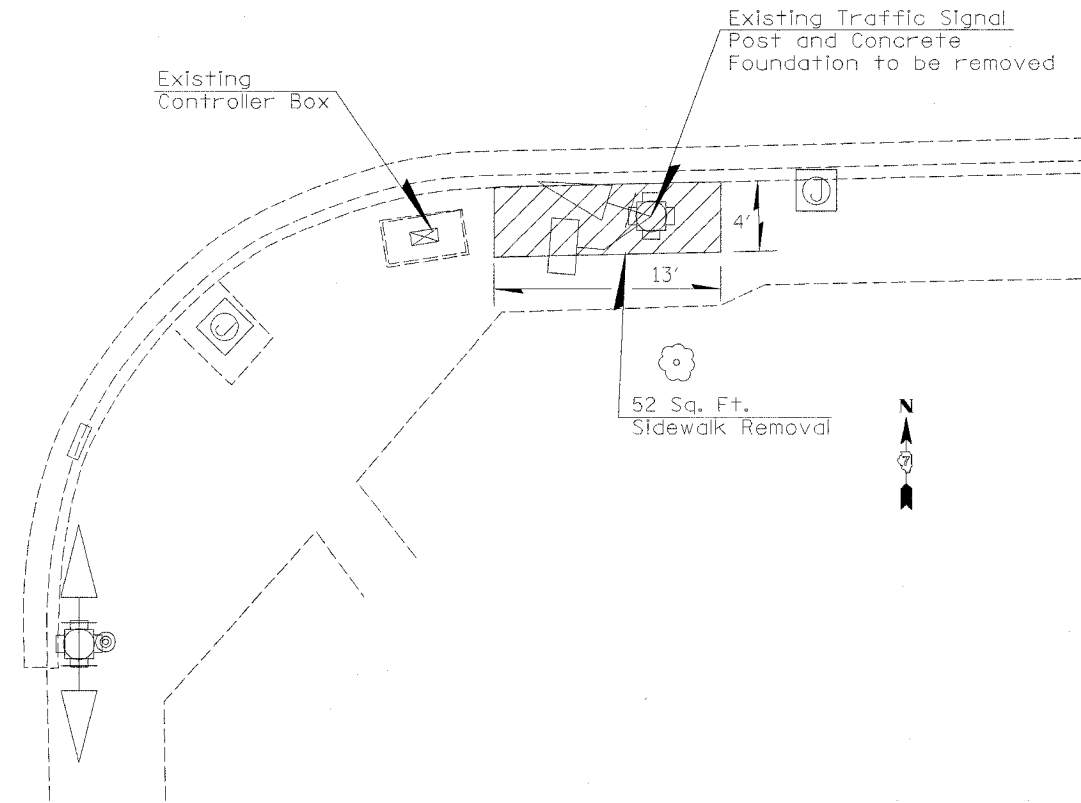
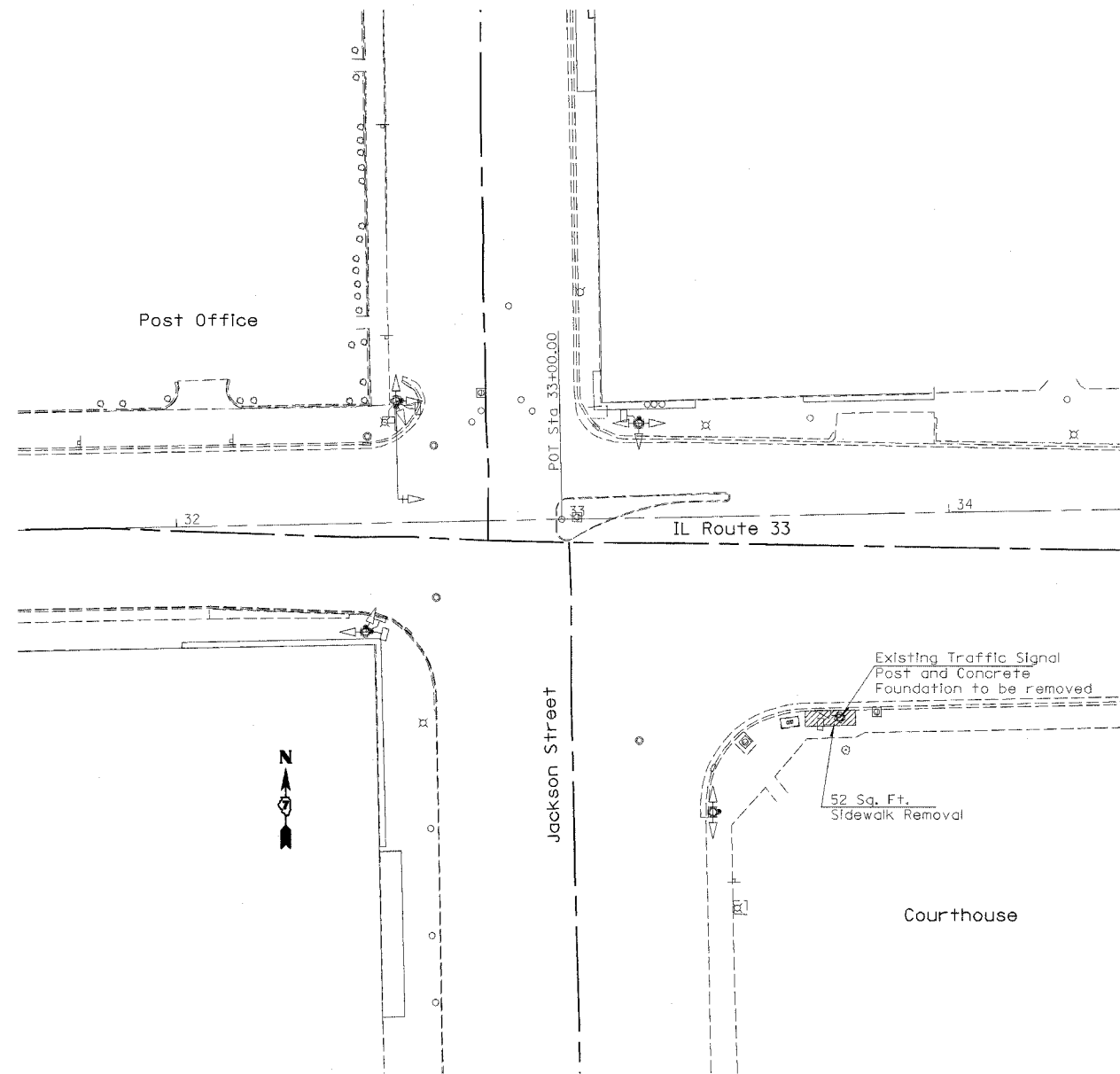


F.A.P. RTE.	SECTION	COUNTY	TOTAL SHEETS	SHEET NO.
95	**	JASPER	6	4
STA.		TO STA.		
FED. ROAD DIST. NO.		ILLINOIS FED. AID PROJECT		
** DT SIGNAL MODERNIZATION 2006-3				



**LEGEND**

EXISTING	PROPOSED	
		CONTROLLER
		HANDHOLE
		DOUBLE HANDHOLE
		SIGNAL POST
		TRAFFIC SIGNAL WITH BACKPLATE
		PEDESTRIAN SIGNAL HEAD
		SERVICE INSTALLATION
		STEEL MAST ARM ASSEMBLY AND POLE
		DETECTOR LOOP
		JUNCTION BOX
		PEDESTRIAN PUSH BUTTON

PLOT DATE = 6/18/2006  
 FILE NAME = c:\v\projects\74090\dt\806\pa.dgn  
 PLOT SCALE = 1/8"=1'-0"  
 USER NAME = star7fernk

REVISIONS	
NAME	DATE

ILLINOIS DEPARTMENT OF TRANSPORTATION  
**EXISTING INSTALLATION  
 &  
 REMOVAL ITEMS**  
 SCALE: VERT.      DRAWN BY  
 DATE                      CHECKED BY