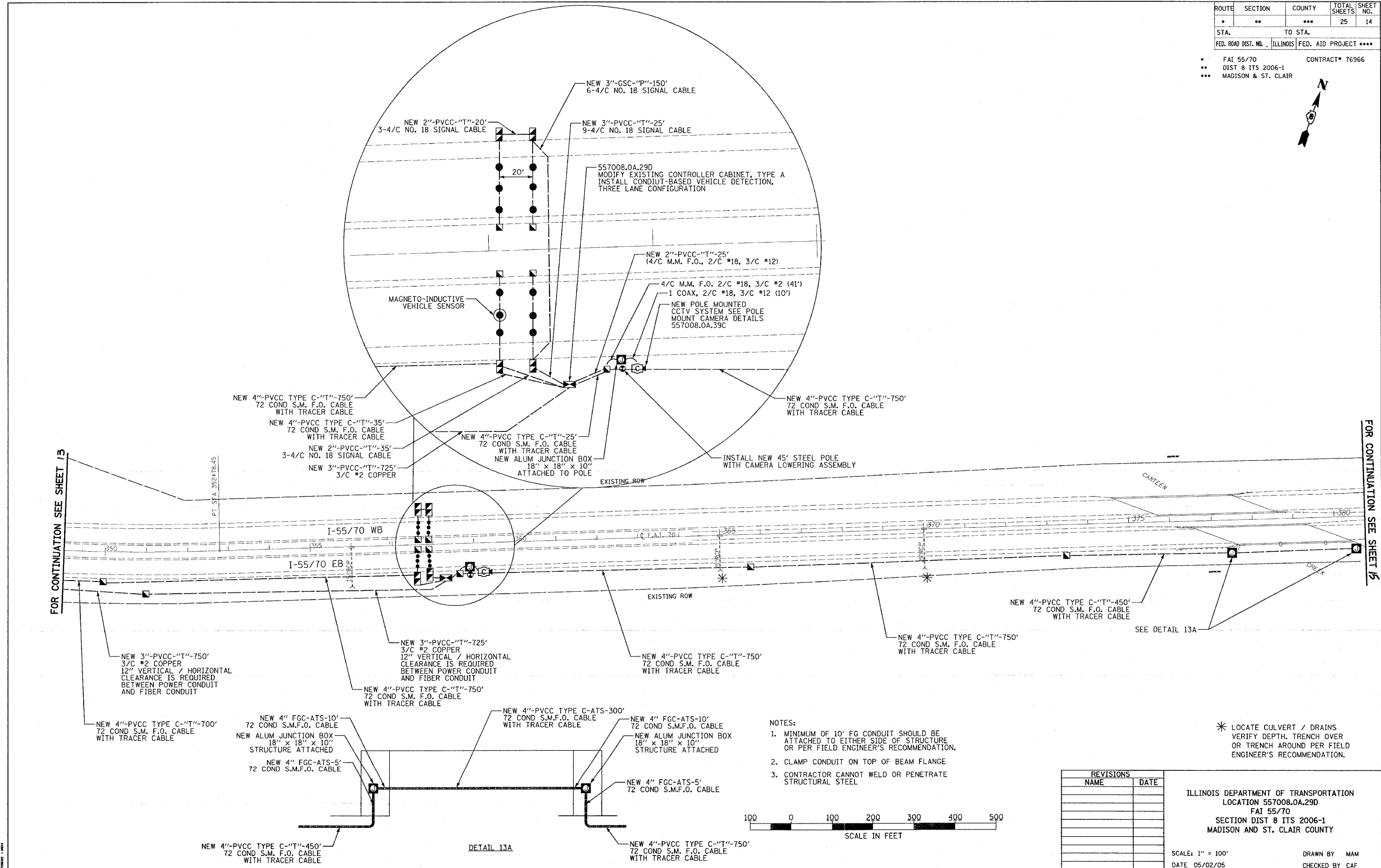


ROUTE	SECTION	COUNTY	TOTAL SHEETS	SHEET NO.
•	••	•••	25	14
STA.	TO STA.			
FED. ROAD DIST. NO.	ILLINOIS	FED. AID PROJECT	••••	

• FAI 55/70 CONTRACT# 76966  
 •• DIST 8 ITS 2006-1  
 ••• MADISON & ST. CLAIR

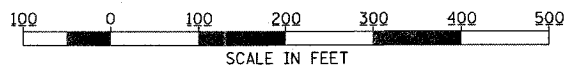


FOR CONTINUATION SEE SHEET 13

FOR CONTINUATION SEE SHEET 15

- NOTES:
- MINIMUM OF 10' FG CONDUIT SHOULD BE ATTACHED TO EITHER SIDE OF STRUCTURE OR PER FIELD ENGINEER'S RECOMMENDATION.
  - CLAMP CONDUIT ON TOP OF BEAM FLANGE
  - CONTRACTOR CANNOT WELD OR PENETRATE STRUCTURAL STEEL

\* LOCATE CULVERT / DRAINS VERIFY DEPTH. TRENCH OVER OR TRENCH AROUND PER FIELD ENGINEER'S RECOMMENDATION.



REVISIONS	
NAME	DATE

ILLINOIS DEPARTMENT OF TRANSPORTATION  
 LOCATION 557008.OA.29D  
 FAI 55/70  
 SECTION DIST 8 ITS 2006-1  
 MADISON AND ST. CLAIR COUNTY

SCALE: 1" = 100'  
 DATE 05/02/05  
 DRAWN BY MAM  
 CHECKED BY CAF

DETAIL 13A