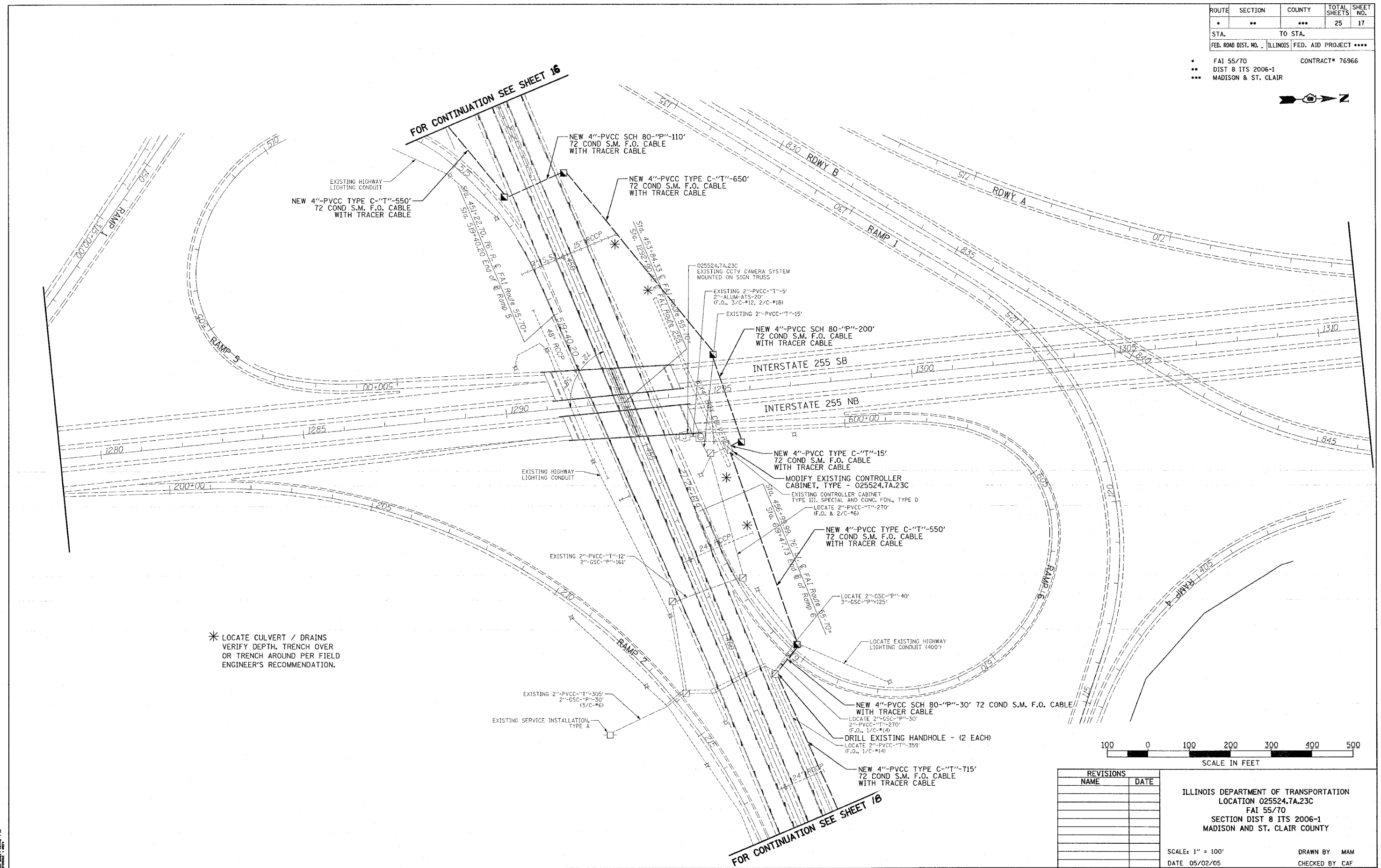
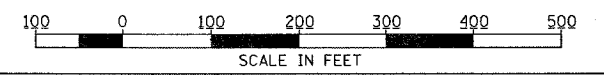


ROUTE	SECTION	COUNTY	TOTAL SHEETS	SHEET NO.
•	••	•••	25	17
STA. TO STA.				
FED. ROAD DIST. NO.			ILLINOIS FED. AID PROJECT	

• FAI 55/70 CONTRACT# 76966
 •• DIST 8 ITS 2006-1
 ••• MADISON & ST. CLAIR



* LOCATE CULVERT / DRAINS
 VERIFY DEPTH, TRENCH OVER
 OR TRENCH AROUND PER FIELD
 ENGINEER'S RECOMMENDATION.



REVISIONS	
NAME	DATE

ILLINOIS DEPARTMENT OF TRANSPORTATION
 LOCATION 025524.7A.23C
 FAI 55/70
 SECTION DIST 8 ITS 2006-1
 MADISON AND ST. CLAIR COUNTY

SCALE: 1" = 100'
 DATE 05/02/05
 DRAWN BY MAM
 CHECKED BY CAF

DATE PLOTTED: 05/02/05
 PLOT SCALE: 1" = 100'
 PLOT SHEET: 17 OF 25