

F.A.-RTE.	SECTION	COUNTY	TOTAL SHEETS	SHEET NO.
1569	02-00025-00-LT	COOK	14	1
STA.		TO STA.		
FED. ROAD DIST. NO.		ILLINOIS	FED. AID PROJECT	

CONTRACT NO. - 83711



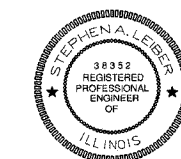
LOCATION OF SECTION INDICATED AS [Black Box]

STATE OF ILLINOIS  
DEPARTMENT OF TRANSPORTATION  
DIVISION OF HIGHWAYS

APPROVED 6-02 20 95  
*David R. Brady*  
LOCAL AGENCY OFFICIAL

APPROVED 6-3 20 05  
*Chao*  
ENGINEER OF LOCAL ROADS AND STREETS

APPROVED June 6, 20 05  
*Dina O'Keefe*  
REGION ENGINEER



EXPIRES 11-30-05  
*Stephen A. Leiber*  
SIGNATURE  
6/01/05  
DATE

PH# (708)599-8980

(PRINTED BY AUTHORITY OF THE STATE OF ILLINOIS)

STATE OF ILLINOIS  
DEPARTMENT OF TRANSPORTATION  
DIVISION OF HIGHWAYS

# PLANS FOR PROPOSED FEDERAL AID HIGHWAY

F.A.U. ROUTE 1569 (73RD STREET)

LIGHTING IMPROVEMENTS, 100 FT. EAST OF SAYRE  
AVENUE TO 1505 FT. WEST OF CENTRAL AVENUE

SECTION NO. 02-00025-00-LT

PROJECT NO: M-8003(447)

JOB NO: C91-367-04

VILLAGE OF BEDFORD PARK, COOK COUNTY

INDEX TO SHEETS:

SHEET NO.	DESCRIPTION
1	COVER SHEET
#E-2	BILL OF MATERIALS, SYMBOLS & GENERAL NOTES
#E-3	EXISTING LIGHTING SYSTEM WITH CIRCUITRY
#E-4	EXISTING LIGHTING REMOVAL PLANS STA. 5+00 TO 49+00
#E-5	EXISTING LIGHTING REMOVAL PLANS STA. 49+00 TO 81+00
#E-6	PROPOSED LIGHTING IMPROVEMENT PLAN STA. 5+00 TO 32+00
#E-7	PROPOSED LIGHTING IMPROVEMENT PLAN STA. 32+00 TO 62+00
#E-8	PROPOSED LIGHTING IMPROVEMENT PLAN STA. 62+00 TO 81+95
#E-9	ONE LIGHT CIRCUIT DIAGRAM, MODIFY EXISTING CIRCUITS
#E-10	DAVIT LIGHT POLE 40 FT. MH, 10/12 FT MA
#E-11	LIGHT POLE FOUNDATION, METAL
#E-12	LIGHTING CONTROLLER SPECIAL, 100 AMPERE-120 VOLT/240 VOLT
#E-13	ELECTRICAL SERVICE INSTALLATION ABOVE GROUND
#E-14	ELECTRICAL DETAILS

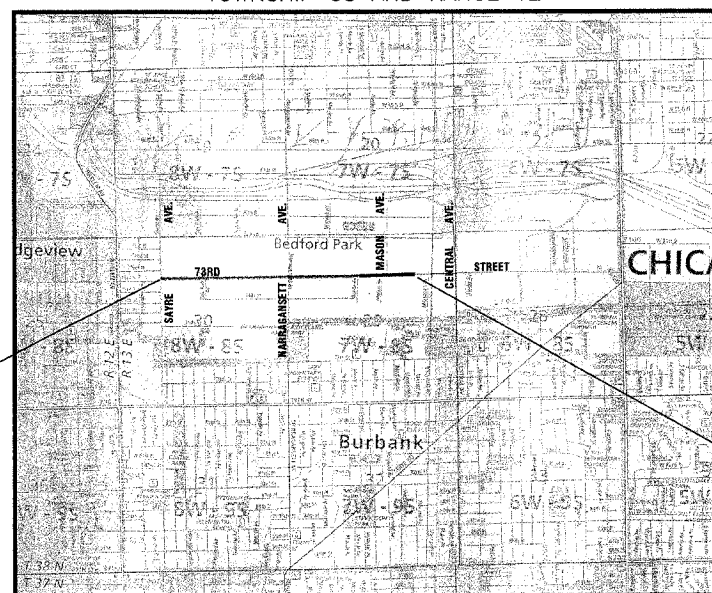
LIST OF STATE STANDARDS:

STANDARD NO.	DESCRIPTION
701606-04:	URBAN LANE CLOSURE, MULTILANE 2W WITH MOUNTABLE MEDIAN
701301-02:	2L, 2W, SHORT TIME OPERATIONS
702001-05:	TRAFFIC CONTROL DEVICES

FEDERAL-AID DESIGN ENGINEER: PHIL MARCYN 1-847-705-4189



TOWNSHIP 38 AND RANGE 12

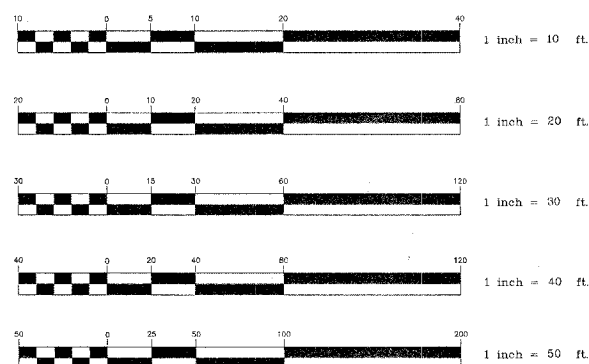


LOCATION MAP

TRAFFIC DATA  
ADT = 11,500  
SPEED LIMIT = 30 MPH

PROJECT BEGINS  
AT STA. 6+00

PROJECT ENDS  
AT STA. 81+95



FULL SIZE PLANS HAVE BEEN PREPARED USING STANDARD  
ENGINEERING SCALES, REDUCED SIZED PLANS WILL NOT  
CONFORM TO STANDARD SCALES, IN MAKING MEASUREMENTS  
ON REDUCED PLANS, THE ABOVE SCALES MAY BE USED

J.U.L.I.E.  
JOINT UTILITY LOCATION FOR EXCAVATION  
1-800-892-0123

CONTRACT NO. - 83711

**Hoeffler-Butler Engineering, Inc.**  
Consulting Civil Engineers / Land Surveyors  
LICENSE NO. 184-000819

8714 S. ROBERTS ROAD • HICKORY HILLS, ILLINOIS • 60457 • (708) 599-8980

GROSS LENGTH OF PROJECT 7595 FEET (1.43 MILES)  
NET LENGTH OF PROJECT 7595 FEET (1.43 MILES)