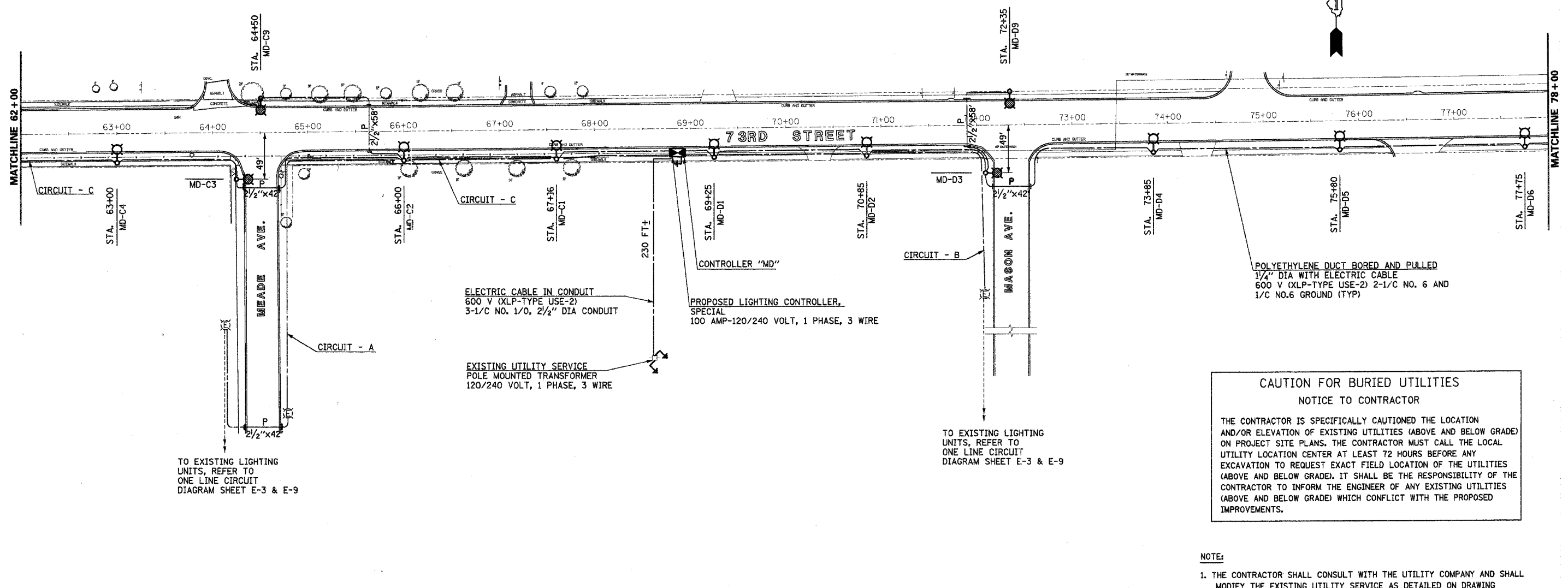
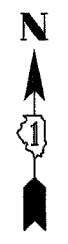


F.A. RTE.	SECTION	COUNTY	TOTAL SHEETS	SHEET NO.
1569	02-00025-00-1T	COOK	14	8
STA.	TO STA.			
FED. ROAD DIST. NO.	ILLINOIS	FED. AID PROJECT		
CONTRACT NO. - 93711				



ELECTRIC CABLE IN CONDUIT
600 V (XLP-TYPE USE-2)
3-1/C NO. 1/0, 2 1/2" DIA CONDUIT

PROPOSED LIGHTING CONTROLLER,
SPECIAL
100 AMP-120/240 VOLT, 1 PHASE, 3 WIRE

EXISTING UTILITY SERVICE
POLE MOUNTED TRANSFORMER
120/240 VOLT, 1 PHASE, 3 WIRE

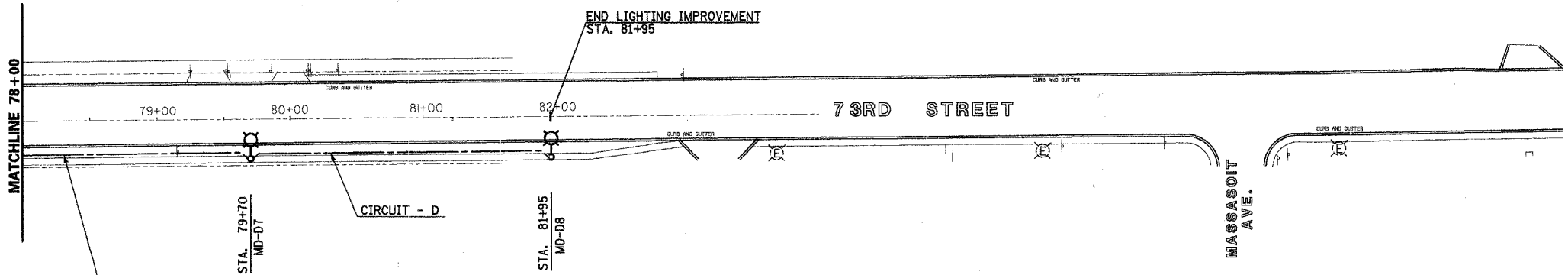
POLYETHYLENE DUCT BORED AND PULLED
1 1/4" DIA WITH ELECTRIC CABLE
600 V (XLP-TYPE USE-2) 2-1/C NO. 6 AND
1/C NO.6 GROUND (TYP)

CAUTION FOR BURIED UTILITIES
NOTICE TO CONTRACTOR

THE CONTRACTOR IS SPECIFICALLY CAUTIONED THE LOCATION AND/OR ELEVATION OF EXISTING UTILITIES (ABOVE AND BELOW GRADE) ON PROJECT SITE PLANS. THE CONTRACTOR MUST CALL THE LOCAL UTILITY LOCATION CENTER AT LEAST 72 HOURS BEFORE ANY EXCAVATION TO REQUEST EXACT FIELD LOCATION OF THE UTILITIES (ABOVE AND BELOW GRADE). IT SHALL BE THE RESPONSIBILITY OF THE CONTRACTOR TO INFORM THE ENGINEER OF ANY EXISTING UTILITIES (ABOVE AND BELOW GRADE) WHICH CONFLICT WITH THE PROPOSED IMPROVEMENTS.

NOTE:

1. THE CONTRACTOR SHALL CONSULT WITH THE UTILITY COMPANY AND SHALL MODIFY THE EXISTING UTILITY SERVICE AS DETAILED ON DRAWING SHEET NO. E-13
2. THE CONTRACTOR SHALL MODIFY THE EXISTING LIGHTING SYSTEM AS SHOWN AND/OR AS DIRECTED BY THE ENGINEER.



POLYETHYLENE DUCT BORED AND PULLED
1 1/4" DIA WITH ELECTRIC CABLE
600 V (XLP-TYPE USE-2) 2-1/C NO. 6 AND
1/C NO.6 GROUND (TYP)



212 TIMBERCREST DRIVE
SCHAUMBURG, ILLINOIS
60193-1572

ILLINOIS DEPARTMENT OF TRANSPORTATION
73rd STREET (FAU 1569)
VILLAGE OF BEDFORD PARK

PROPOSED LIGHTING IMPROVEMENT PLAN
STA. 62+00 TO STA. 81+95

SCALE: 1"=50'
DATE: 04-15-05

DRAWN BY: HMJ
CHECKED BY: JS

REVISION 05-28-05
REVISION 05-21-05